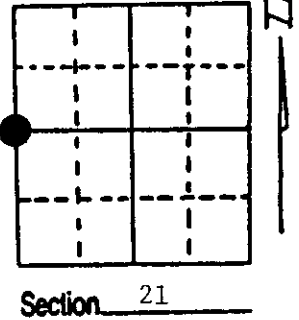


# U.S. PUBLIC LAND SURVEY MONUMENT RECORD

Note: This form is intended and designed to fulfill all requirements of Wisconsin Administrative Code, Chapter A-E 7.08 U.S. Public Land Survey Monument Record (3) (a) (b) (c) (d) (e) (f) (g) (h) (i). An additional sheet may be added if necessary to conform with said requirements.

(a) Corner location: Township 35 North  
 Range 10 East/West  
 Town/City/Village Enterprise  
 County Oneida



(b) (f) (g) (h) Description of monument found at this corner and if it was accepted, state all evidence (material, testimonial, occupational, plats, records, other monuments) used as a basis for accepting. If not accepted or if nothing was found, state evidence used as basis for establishing location. If reestablished through lost corner proportionate methods, indicate all monuments, distances and directions used to establish. Indicate type of monument found or set and sign post.

1865 - James Nowlin established this corner at 40.00 chains and set a wood post with two BTs:

5" Fir, S70°W, 25 Links (16.50') 9" Fir, N73°E, 125 Links (82.50')

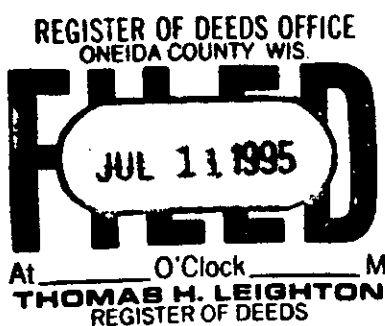
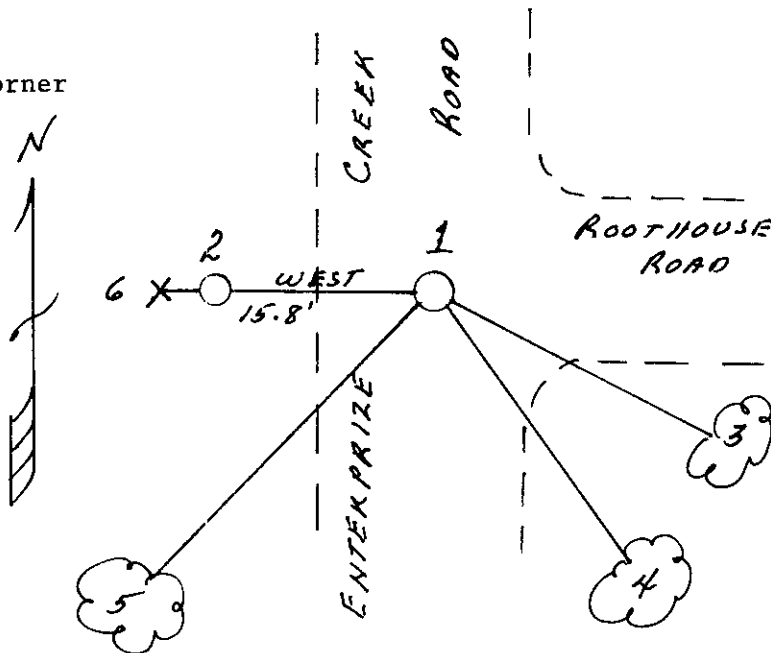
5/24/1995 - Milo E. Stefan found an 1 1/4" x 30" iron pipe in "T" of road. Pipe badly bent. Also, a Witness Monument (2" x 30" aluminum) West 15.8'.

We replaced the damaged iron pipe with a 1" x 24" iron pipe 6" below road surface, made new BTs and set plastic sign post.

(c) (d) (e) Plan view of corner with ties to at least 4 witness monuments. If in disagreement with previously established corner, show the distances between the two corners and also indicate the ties to the disputed corner.

- 1) 1" x 24" iron pipe
- 2) 2" x 30" aluminum monument as Witness Corner
- 3) 10" Red Pine, S65°E, 95.05'
- 4) 8" White Spruce, S44°E, 94.63'
- 5) 10" Black Ash, S30°W, 67.13'
- 6) Plastic Sign Post, West, 16.2'

Distances to nail in side of BTs.  
 Stump blaze scribed BT.  
 BT tags to face of each BT.



(i) I, Milo E. Stefan  
 (type or print name) certify that the corner location on this record was determined by me or under my direction and control and that this U.S. Public Land Survey Monument Record is correct and complete to the best of my knowledge and belief.

Milo E Stefan  
 Signature

July 10, 1995  
 Date



3510202000

FEB 08 2023

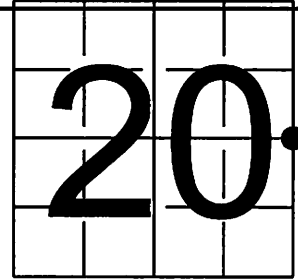
KYLE J. FRANKSON  
REGISTER OF DEEDS

**U S PUBLIC LAND SURVEY MONUMENT RECORD - ADDENDUM**

NOTE: This form is intended and designed to fulfill all requirements of Wisconsin Administrative Code, Chapter A-E 7.08 U.S. Public Land Survey Monument Record (3) (a-i)

A-E 7.08(3)(a) Identity of corner  
EAST 1/4 CORNER OF SECTION 20  
TOWNSHIP 35 NORTH  
RANGE 10 EAST OF THE 4TH PM  
TOWN OF ENTERPRISE,  
COUNTY OF ONEIDA

WISCORS - ONEIDA COUNTY  
N: 116,085.047 USft (116,084.986)  
E: 303,463.719 USft (303,464.130)  
Datum: NAD83 (2011)  
GNSS Method RTN - Direct  
GNSS Control WISCORS VRS



The coordinate value shown has been verified by the average of two or more GPS observations at a markedly different time. Values shown in parenthesis, are previously published measurements.

A-E 7.08(3)(b) Description of any record evidence, monument evidence, occupational evidence, testimonial evidence, or any other material evidence.

Original Surveyor: James L. Nowlin

Date of Original Survey	Commenced: September 22, 1865	Original Accessories:
	Completed: October 2, 1865	Fir 5 S 70° W 25 Links
		Fir 9 N 73° E 125 Links

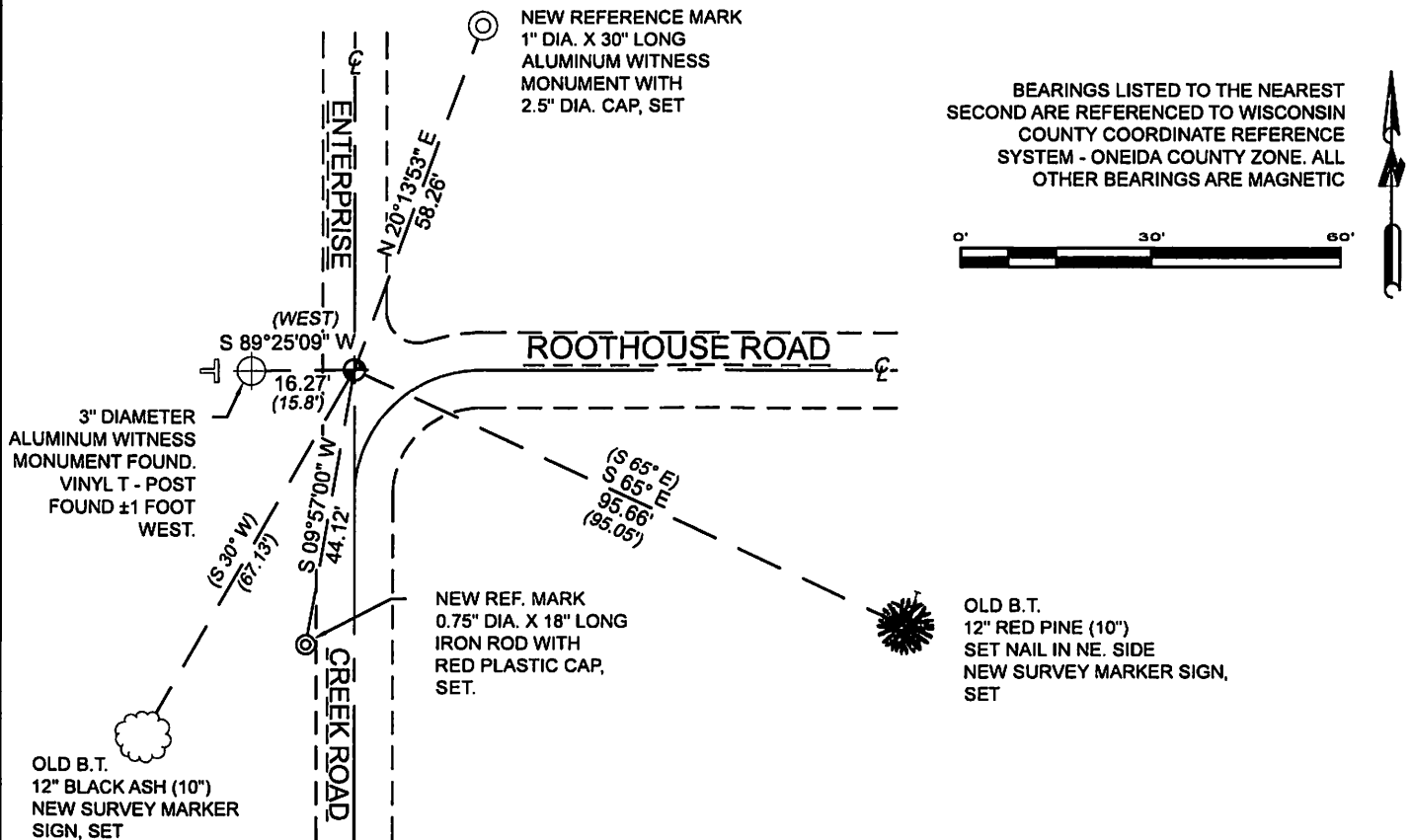
See Previous Monument Record: Index No. P-9 - May 24, 1995 - Surveyor 1558 - Milo E. Stefan - Thence:

January 2, 1998 - Surveyor 1523 - Todd J. Loftus - indicates this position as "Subdivisional monument found" on O.C.S. Map B3847.  
November 6, 2002 - Surveyor 1523 - Todd J. Loftus - indicates this position as "1" iron pipe / subdivisional monument found" on O.C.S. Map B5168.  
March 22, 2010 - Surveyor 2468 - Dean Williams - indicates this position as "Found 1.3" I.P." on CSM. Vol. 17, Pg. 3789.  
November 8, 2013 - Surveyor 2964 - Theodore G. Sommer - indicates this position as "1" diameter iron pipe found in place on O.C.S. Map B7702.

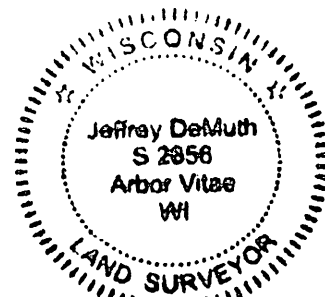
July 21, 2022 - At the request of Oneida County Land Information, I found a 1.4" diameter iron pipe in the west shoulder of Enterprise Creek Road, and ±8" below grade. I also found 2 of Stefan's bearing trees, and his aluminum witness monument as shown on previous U.S. Public Land Survey Monument Record P-9.

A-E 7.08(3)(f) I accept this monument as a FOUND PERPETUATED LOCATION OF THE CORNER and established 2 new witnesses as shown below.

A-E 7.08(3)(c)(d)(e)(h) Plan view of corner with references to at least 4 witness monuments. If in disagreement with previously established corner, show the distances between the two corners and also indicate the ties to the disputed. The directions and distances to other public land survey corners used as evidence or used for determining the corner location.



A-E 7.08(3)(i) I, Jeffrey L. DeMuth, Professional Land Surveyor No. S-2656, hereby certify that the corner location on this record was determined by me or under my direction and control and that this U.S. Public Land Survey Monument Record is correct and complete to the best of my knowledge, and belief



SIGNATURE

*Handwritten signature of Jeffrey L. DeMuth*

January 17, 2023

DATE

P-9  
43510202000