

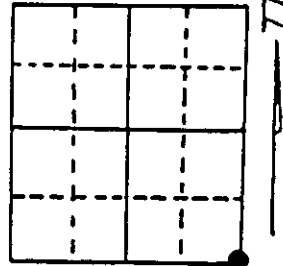
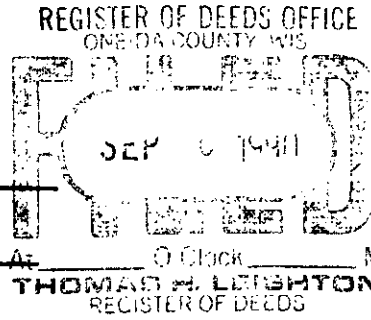
U.S. PUBLIC LAND SURVEY MONUMENT RECORD

Note: This form is intended and designed to fulfill all requirements of Wisconsin Administrative Code, Chapter A-E 7.08 U.S. Public Land Survey Monument Record (3) (a) (b) (c) (d) (e) (f) (g) (h) (i). An additional sheet may be added if necessary to conform with said requirements.

(a) Corner location: Township 35 North
 Range 10 East/West

Town/City/Village E. ENTERPRISE W. SCHOEPEKE

County ONEIDA



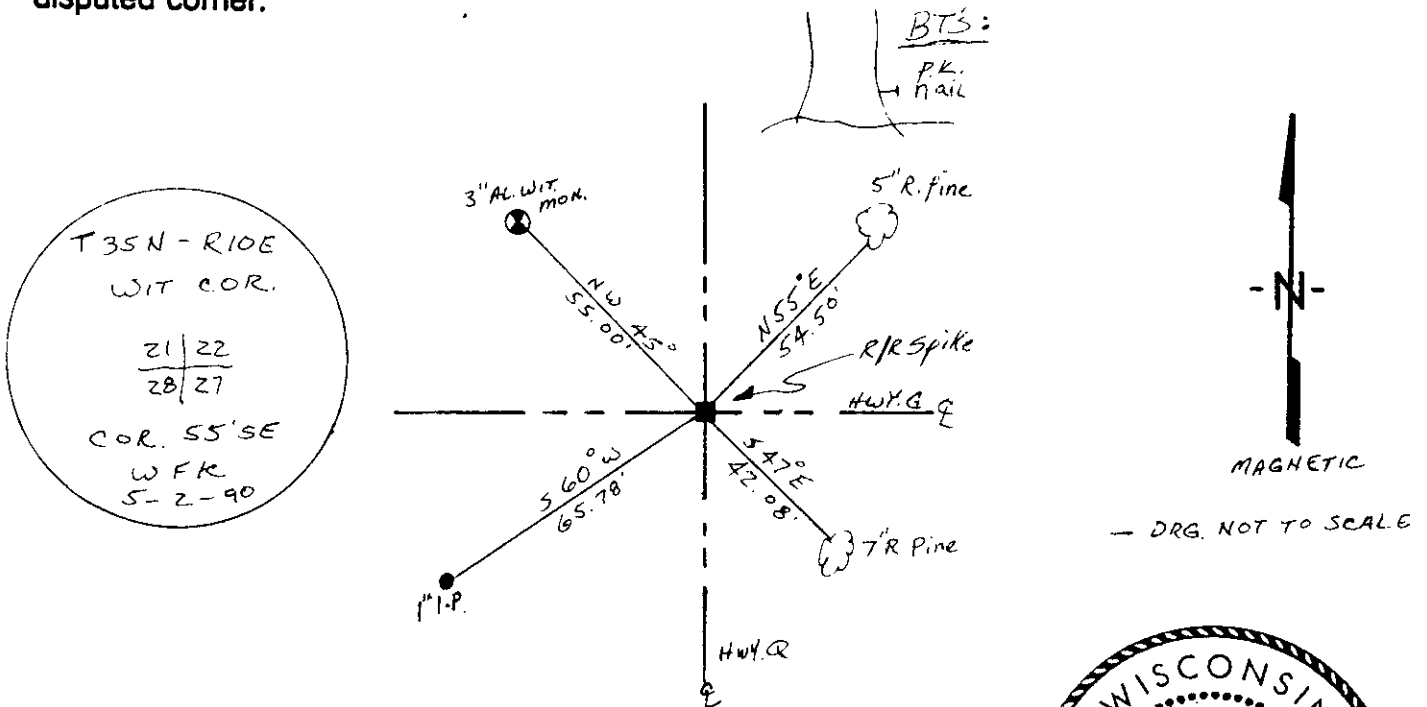
Section 21

(b) (f) (g) (h) Description of monument found at this corner and if it was accepted, state all evidence (material, testimonial, occupational, plats, records, other monuments) used as a basis for accepting. If not accepted or if nothing was found, state evidence used to reestablished through lost corner proportionate methods, directions used to establish. Indicate type of monument.

1865 - JAMES NOWLIN ESTABLISHED ORIGINAL CORNER L
 1908 - VAUGHN SET 1/4" IRON OFF ORIGINAL BT
 1990 - I FOUND R/R SPIKE OVER IRON IN ROAD. SET NW OF CORNER. SET POST NEXT TO TREES SET 1" I.P. WIT COR

12/19/2001
 See Mike in hand info.
 Loftus thinks there may be another corner B'ELY of this location.
 mqr

(c) (d) (e) Plan view of corner with ties to at least 4 witness monuments. If in disagreement with previously established corner, show the distances between the two corners and also indicate the ties to the disputed corner.



(i) I, WILLIAM F. KELLY
 (type or print name) certify that the corner location on this record was determined by me or under my direction and control and that this U.S. Public Land Survey Monument Record is correct and complete to the best of my knowledge and belief.

William F. Kelly 8/28/90
 Signature Date



Index No. R-13

Stamp

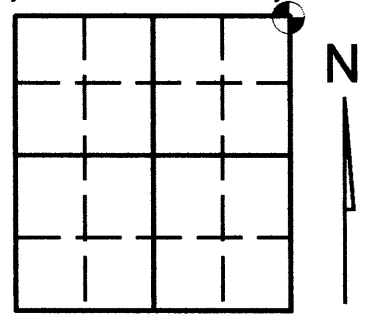
3510210000

U.S. PUBLIC LAND SURVEY MONUMENT RECORD

Note: This form is intended and designed to fulfill all requirements of Wisconsin Administrative Code, Chapter A-E 7.08 U.S. Public Land Survey Monument Record (3)(a)(b)(c)(d)(e)(f)(g)(h)(i). An additional sheet may be added if necessary to conform with said requirements.

(a) Corner location: Township 35 North
 Range 10 (Eas/West)

Town/City/Village ENTERPRISE
 County ONEIDA



Section 28

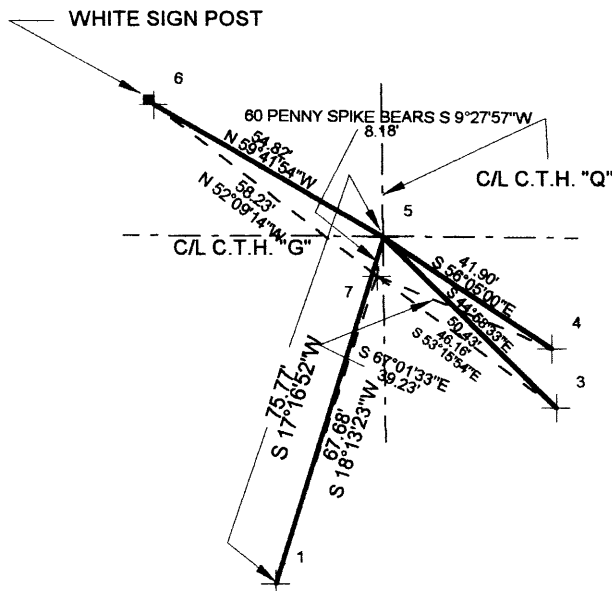
(b) (f) (g) (h) Description of monument found at this corner and if it was accepted, state all evidence (material, testimonial, occupational, plats, records, other monuments) used as a basis for accepting. If not accepted or if nothing was found, state evidence used as basis for establishing location. If reestablished through lost corner proportionate methods, indicate all monuments, distances and directions used to establish. Indicate type of monument found or set and sign post.

See U.S. Land Survey Monument Record form R-13 for history of corner.

- PRECONSTRUCTION - Found P.K. nail, 60 penny spike and some accessories as noted on above said form R-13
- APRIL 2005 POST CONSTRUCTION, KEVIN BIXBY - Reset two 4" P.K. nails and witnessed as shown below.

(c) (d) (e) Plan view of corner with ties to at least 4 witness monuments. If in disagreement with previously established corner, show the distances between the two corners and also indicate the ties to the disputed corner.

Angles and distances measured with total station. Bearings and distances measured to head of spikes set in B.T.'S



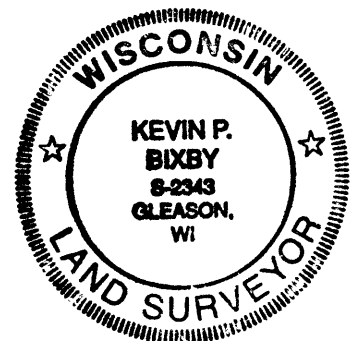
SCALE: 1"=40'

LEGEND

- 1- 1" X 24" I.P SET
- 3- EXISTING SPIKE 8" J.P.
- 4- SET SPIKE IN 18" J.P. (EX. B.T.)
- 5- SET 4" P.K. NAIL
- 6- O.C.M. - W.C.
- 7- SET 4" P.K. NAIL

(i) I, KEVIN P. BIXBY

(type or print name) certify that the corner location on this record was determined by me or under my direction and control and that this U.S. Public Land Survey Monument Record is correct and complete to the best of my knowledge and belief.



Index No. R-13

Kevin P. Bixby
 Signature Date 04/10/05

Stamp
 3510210000