

U.S. PUBLIC LAND SURVEY MONUMENT RECORD

NOTE: This form is intended and designed to fulfill all requirements of Wisconsin Administrative Code, Chapter A-E 7.08 U.S. Public Land Survey Monument Record. An additional sheet may be added if necessary to conform with said requirements.

CORNER LOCATION

Center of Section 21
Township 35 North, Range 10 East of the 4th P.M.
Town of Enterprise, Oneida County, Wisconsin

REGISTER OF DEEDS OFFICE
ONEIDA COUNTY
FILED

SEP 10 2018

KYLE J. FRANSON
REGISTER OF DEEDS

6	5	4	3	2	1
7	8	9	10	11	12
18	17	16	15	14	13
19	20	■	22	23	24
30	29	28	27	26	25
31	32	33	34	35	36

T35N - R10E

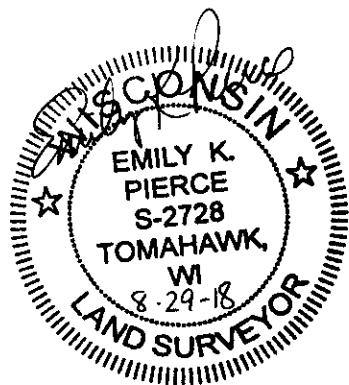
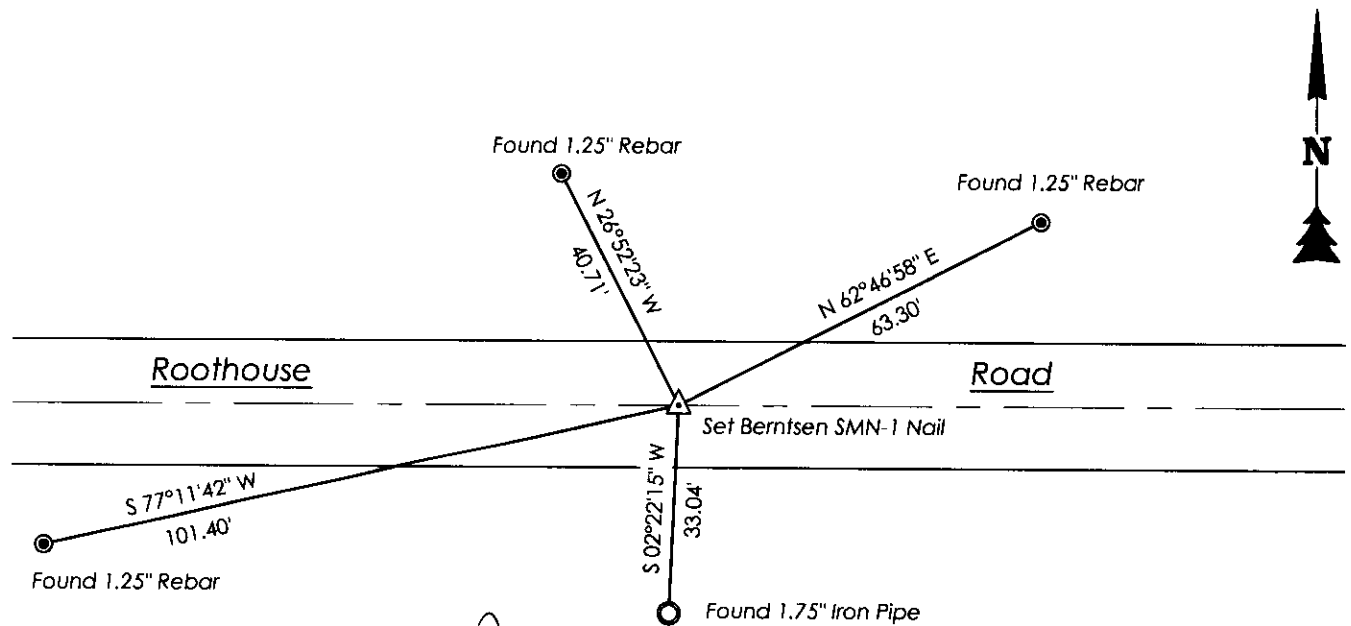
DESCRIPTION OF MONUMENT FOUND AT THIS CORNER AND IF IT WAS ACCEPTED, STATE ALL EVIDENCE (MATERIAL, TESTIMONIAL, OCCUPATIONAL, PLATS, RECORDS, OTHER MONUMENTS) USED AS A BASIS FOR ACCEPTING. IF NOT ACCEPTED OR IF NOTHING WAS FOUND, STATE EVIDENCE USED AS BASIS FOR ESTABLISHING LOCATION. IF RE-ESTABLISHED THROUGH LOST CORNER PROPORTIONATE METHODS, INDICATE ALL MONUMENTS, DISTANCES AND DIRECTIONS USED TO ESTABLISH. INDICATE TYPE OF MONUMENT AND SIGN POST FOUND OR SET.

6/14/2016 I visited corner location and found a spike with a large cross on the head that was set by Loftus on April 7, 2003 as shown on Survey Map B7177, as well as referenced on Survey Map B7702. Found existing iron pipe to the south as shown on Survey Map B7177 and set three other monuments for reference to reset corner after construction. GPS'ed corner location in Oneida County Coordinate System in NAD 83 (2011) N: 116,135.17 E: 306,105.05

8/22/2018 I visited corner and found all ties. Road recently blacktopped. Set Berntsen SMN-1 Nail at corner location.

PLAN VIEW OF CORNER WITH TIES TO AT LEAST 4 WITNESS MONUMENTS. IF IN DISAGREEMENT WITH PREVIOUSLY ESTABLISHED CORNER, SHOW THE DISTANCES BETWEEN THE TWO CORNERS AND ALSO INDICATE THE TIES TO THE DISPUTED.

SCALE: 1" = 30'
Bearings Oneida
County Grid



I, Emily K. Pierce, Professional Land Surveyor No. S-2728, hereby certify that the corner location on this record was determined by me or under my direction and control and that this U.S. Public Land Survey Monument Record is correct and complete to the best of my knowledge and belief.

Emily K. Pierce
Emily K. Pierce, PLS No. S-2728
STEIGERWALDT LAND SURVEYING, LLC

3510212020

P-11