

CERTIFIED LAND CORNER RESTORATION

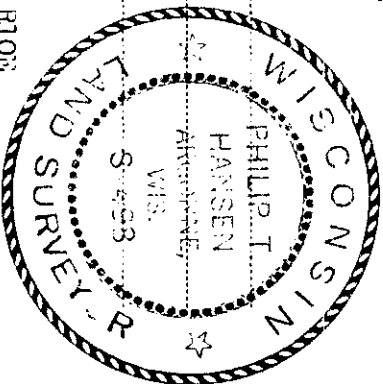
Index No. **V-22**

State of Wisconsin } ss.
 County of Oneida

I, Phillip T. Hansen, do hereby certify that on the 28th day of April, 1976, I found evidence of the W 1/16 corner of Section 25 - 36, Township 35, North, Range 10 East, Fourth Principal Meridian, as described hereon; and that from this evidence I established a new monument and accessories as described hereon to perpetuate the original location of this corner.

Resident witnesses:

Glen Barker
Jim Clafflin
Herb Wagner



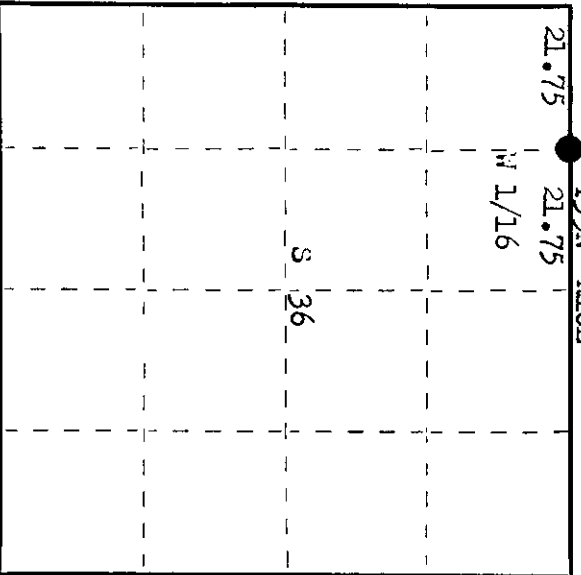
History of original corner establishment: Corner established by H.C. Lawrence, registered land surveyor, in 1951. He ran a random line west from recovered 1/4 Corner, a distance of 43.50 chains to point 24 lks north of section corner, bearing of corrected line S 87° 44' N, corrected distance 43.22 chains. Set the N 1/16 corner at 21.75 chains S 87° 44' N of 1/4 corner, equidistant. Found old post, probably set by D.H. Vaughan and OBT, Y. Birch N 61 1/2° E 34 lks. set new 3" cedar post.

Description of corner evidence found: recovered 3" cedar post, squared and scribed S25 N 1/16 S36 in poor condition.

Recovered OBT - Y. Birch 12" N 61° 30' E 34 lks (34.5 lks) now a decayed stub.
 Scribed 1/8" BT.

Description of monument and accessories I established to perpetuate the original location of this corner. replaced 3" cedar post with 1 1/2" iron pipe with 2" brass cap stamped.

Pipe projects 18" above ground.
 NETS - Cedar 6" N 59° W 37.2 lks, scribed 1/16 BT.
 Cedar 12" S 12° W 06.7 lks, scribed 1/16 BT.
 Drove support stakes beside new monument and set old post next to it. W 1/16 S 36
 Monument and BTs painted blue. T35N R10E
 S498
 S 25
 S 36
 CPI-1976



○ = Corner monument restored.

Dated at Rhineland, Wis., this 19th day of July, 1976

Signature Phillip T. Hansen Title Registered Land Surveyor Registration No. S-498
 (County Surveyor, Registered Land Surveyor, or other duly authorized official)

Office of Register of Deeds, County of Oneida, 33rd day of July, 1976. I hereby certify that the within instrument was filed in this office for record on the 23rd day of July, 1976, at 1:00 o'clock P. M.

Dorinda Berger Krehan
 (Register of Deeds)

By: _____ Deputy

3510 25030