

U.S. PUBLIC LAND SURVEY MONUMENT RECORD

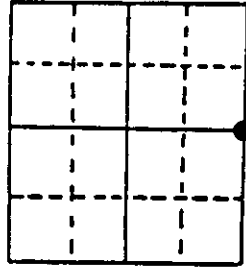
Note: This form is intended and designed to fulfill all requirements of Wisconsin Administrative Code, Chapter A-E 7.08 U.S. Public Land Survey Monument Record (3) (a) (b) (c) (d) (e) (f) (g) (h) (i). An additional sheet may be added if necessary to conform with said requirements.

(a) Corner location: Township 35 North

Range 10 East/West

Town/City/Village E. ENTERPRISE W. SCHOEPEKE

County ONEIDA



Section 25

(b) (f) (g) (h) Description of monument found at this corner and if it was accepted, state all evidence (material, testimonial, occupational, plats, records, other monuments) used as a basis for accepting. If not accepted or if nothing was found, state evidence used as basis for establishing location. If reestablished through lost corner proportionate methods, indicate all monuments, distances and directions used to establish. Indicate type of monument found or set and sign post.

1859 - H.C. FELLOWS ESTABLISHED ORIGINAL CORNER.

1901 - B.F. DORR RECOVERED CORNER

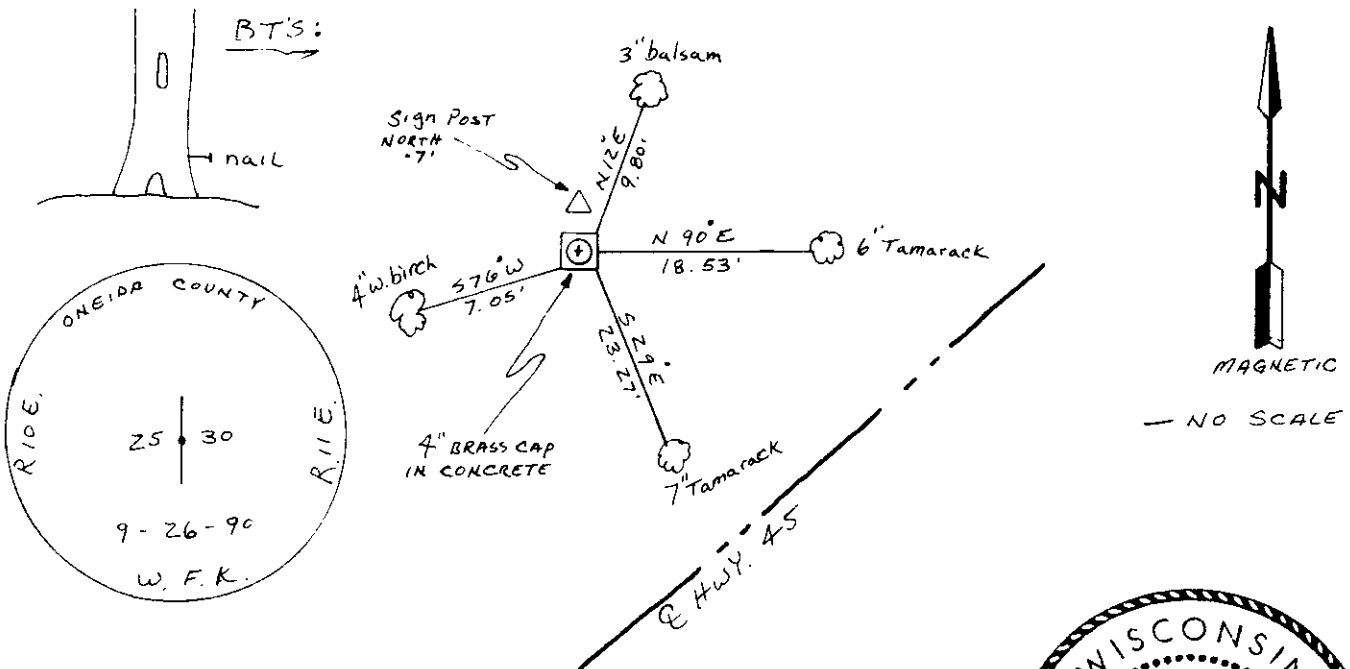
1946 - LYTLE RECOVERED DORR'S POST DOWN & B.T. STUMP NE MADE NEW B.T.: 5" SPRUCE S 86° 30' E, 18 1/2 LKS.

1950 - F.R. WINCENTSEN INDICATES CORNER ON MAP # B 1383, ONEIDA CO. RECORDS.

1978 - Wm. BANDOW INDICATES CORNER AS FOUND BRASS CAPPED CONCRETE MONUMENT ON MAP # C 422, ONEIDA CO. RECORDS.

1990 - I FOUND 4x4 WOOD POST NEXT TO A BRASS CAPPED CONCRETE MONUMENT NORTH OF HWY. 45. B.T.'S WERE TAKEN OUT DURING CONSTRUCTION OF NEW HWY. 45. I STAMPED BRASS CAP AS CORNER & MADE 4 B.T.'S TO IT.

(c) (d) (e) Plan view of corner with ties to at least 4 witness monuments. If in disagreement with previously established corner, show the distances between the two corners and also indicate the ties to the disputed corner.



(i) I, WILLIAM F. KELLY
(type or print name) certify that the corner location on this record was determined by me or under my direction and control and that this U.S. Public Land Survey Monument Record is correct and complete to the best of my knowledge and belief.



Index No. I-25

William F. Kelly 10-30-90
Signature Date

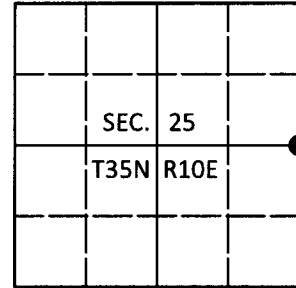
Stamp 3510252000

U.S. PUBLIC LAND SURVEY MONUMENT RECORD

Note: This form is intended and designed to fulfill all requirements of Wisconsin Administrative Code, Chapter A-E 7.08 U.S. Public Land Survey Monument Record (3)(a-i).

(a) CORNER LOCATION
 1/4 Cor. of Secs. 25 & 30
 Township 35 North
 Range 10 & 11 East of the 4th P.M.
 Town of Schoepke and Enterprise
 County of Oneida

WISCORS - Oneida County
 N: 110,964.68 USft
 E: 324,977.52 USft
 Datum: NAD 83(2011)
 GNSS Method: RTN - Offset
 GNSS Control: WISCORS VRS



(b) HISTORY OF ORIGINAL CORNER ESTABLISHMENT

Original Surveyor: _____ Original Accessories: _____
 Date of Survey Commenced: _____ See previous USPLS Monument Record
 Completed: _____

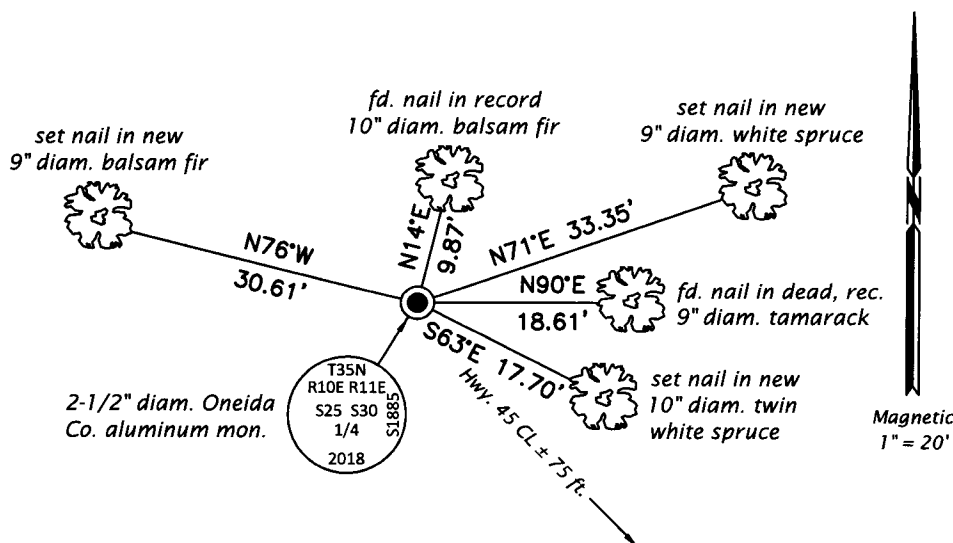
(b)(f)(g)(h) Description of monument found at this corner and if it was accepted, state all evidence (material, testimonial, occupational, plats, records, other monuments) used as a basis for accepting. If not accepted or if nothing was found, state evidence used as basis for establishing location. If re-established through lost corner proportionate methods, indicate all monuments, distances and directions used to establish. Indicate type of monument and sign post found or set.

This is a perpetuation of a previous USPLS Monument Record by William F. Kelly, RLS dated October 30, 1990 and filed in the office of the Oneida County Register of Deeds. A complete history of the corner can be found on the previous monument record. I accept the previous location as a true and faithful perpetuation or reestablishment of the original corner location and further perpetuate it as follows.

July 18, 2018: I found the record monument, a 5" sq., 36" long concrete monument with an Oneida Co. brass tablet lying flat on the ground surface. Near the intersection of record distances from the two remaining bearing trees, I found a ribboned nail that has evidently been used as the corner point recently. The record bearing trees at S76°W and S29°E are gone and down respectively. In place of the nail, I set a 2-1/2" diam., 30" long aluminum pipe with a 3-1/4" diam. Oneida Co. aluminum cap flush with the ground surface. I buried a clear/black DEEP-1 magnet adjacent to the monument. I found or established accessories as shown below. I set a white vinyl sign post bearing Northwest, 0.8 ft.

The coordinate value shown has been verified by at least one of the following methods: 1) comparison to a previously GPS determined published value; 2) the value is the average of two or more GPS observations at a markedly different time; 3) one or more distances were measured back to the GPS observed corner from temporary GPS observed offset locations.

(c)(d)(e) Plan view of corner with ties to at least 4 witness monuments. If in disagreement with previously established corner, show the distances between the two corners and also indicate the ties to the disputed.



REGISTER OF DEEDS OFFICE
 ONEIDA COUNTY
 FILED

AUG 16 2018

**KYLE J. FRANSON
 REGISTER OF DEEDS**

(i) I, Jeffrey W. Austin, Professional Land Surveyor No. S-1885, hereby certify that the corner location on this record was determined by me or under my direction and control and that this U.S. Public Land Survey Monument Record is correct and complete to the best of my knowledge and belief.

[Handwritten Signature]

 Signature

AUG - 8, 2018

 Date