

U.S. PUBLIC LAND SURVEY MONUMENT RECORD

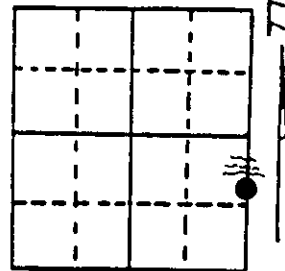
Note: This form is intended and designed to fulfill all requirements of Wisconsin Administrative Code, Chapter A-E 7.08 U.S. Public Land Survey Monument Record (3) (a) (b) (c) (d) (e) (f) (g) (h) (i). An additional sheet may be added if necessary to conform with said requirements.

(a) Corner location: Township 35 North

Range 10 East/West

Town/City/Village ENTERPRISE

County ONEIDA



Section 26

(b) (f) (g) (h) Description of monument found at this corner and if it was accepted, state all evidence (material, testimonial, occupational, plats, records, other monuments) used as a basis for accepting. If not accepted or if nothing was found, state evidence used as basis for establishing location. If reestablished through lost corner proportionate methods, indicate all monuments, distances and directions used to establish. Indicate type of monument found or set and sign post.

1865 - James Nowlin North between Sec. 25 & 26 22.00 ch. set post for M.C.
B.T.'s Cedar 25" S 31° E 151ks
Hemlock 12" S 22° W 161ks.

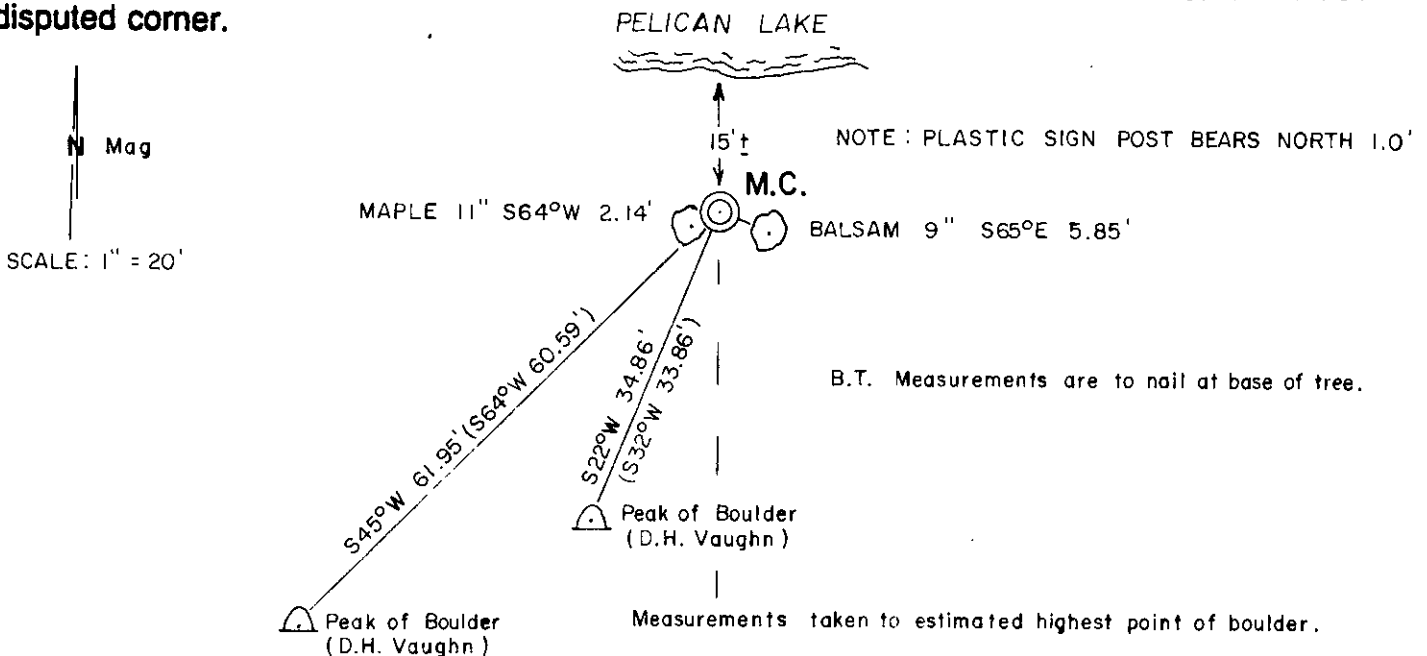
1885 - Shepard uses position established by Nowlin during G.L.O. resurvey of Antigo Island in Pelican Lake. Map # B1755.

1908 - D.H. Vaughn uses iron pipe at this position while creating the Pelican South Shore Plat. Vaughn finds Door's B.T.'s (Hem. stump N 53 W .162 - Birch N 19 E .096) and 2 boulders used as witnesses (see diagram).

1931 - Harry Hall North between Sec. 25 & 26 22.068 ch to iron pipe M.C. used by Door and Vaughn. Map # L534.

1999 - Found rotted iron pipe remains 4" below surface, boulders used by Vaughn as witnesses, and stumps believed to be the Hemlock and (over)

(c) (d) (e) Plan view of corner with ties to at least 4 witness monuments. If in disagreement with previously established corner, show the distances between the two corners and also indicate the ties to the disputed corner.



(i) I, Kip W. Soder, R.L.S. #1731
(type or print name) certify that the corner location on this record was determined by me or under my direction and control and that this U.S. Public Land Survey Monument Record is correct and complete to the best of my knowledge and belief.

Kip W. Soder 7/9/99
Signature Date



Stamp

Index No. T U, 21
3610261100

Birch B.T.'s used by Vaughn. Replaced iron pipe with an Oneida County 2-1/2" X 30" Aluminum Capped Monument stamped to identify corner. Made new B.T.'s, and remeasured to boulders used as witnesses. Plastic sign post set 1.0' North of monument.

REGISTER OF DEEDS OFFICE
ONEIDA COUNTY, WIS.
FILED
AUG 4 1999
At _____ O'Clock _____ M
THOMAS H. LEIGHTON
REGISTER OF DEEDS