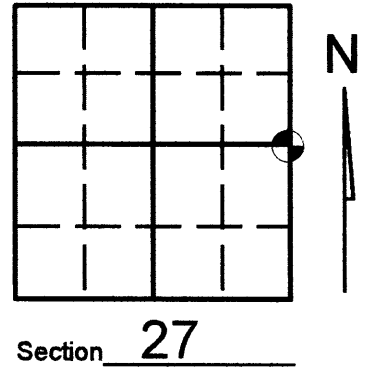


U.S. PUBLIC LAND SURVEY MONUMENT RECORD

Note: This form is intended and designed to fulfill all requirements of Wisconsin Administrative Code, Chapter A-E 7.08 U.S. Public Land Survey Monument Record (3)(a)(b)(c)(d)(e)(f)(g)(h)(i). An additional sheet may be added if necessary to conform with said requirements.

(a) Corner location: Township 35 North
 Range 10 (Eas/West)
 Town/City/Village ENTERPRISE
 County ONEIDA



(b) (f) (g) (h) Description of monument found at this corner and if it was accepted, state all evidence (material, testimonial, occupational, plats, records, other monuments) used as a basis for accepting. If not accepted or if nothing was found, state evidence used as basis for establishing location. If reestablished through lost corner proportionate methods, indicate all monuments, distances and directions used to establish. Indicate type of monument found or set and sign post.

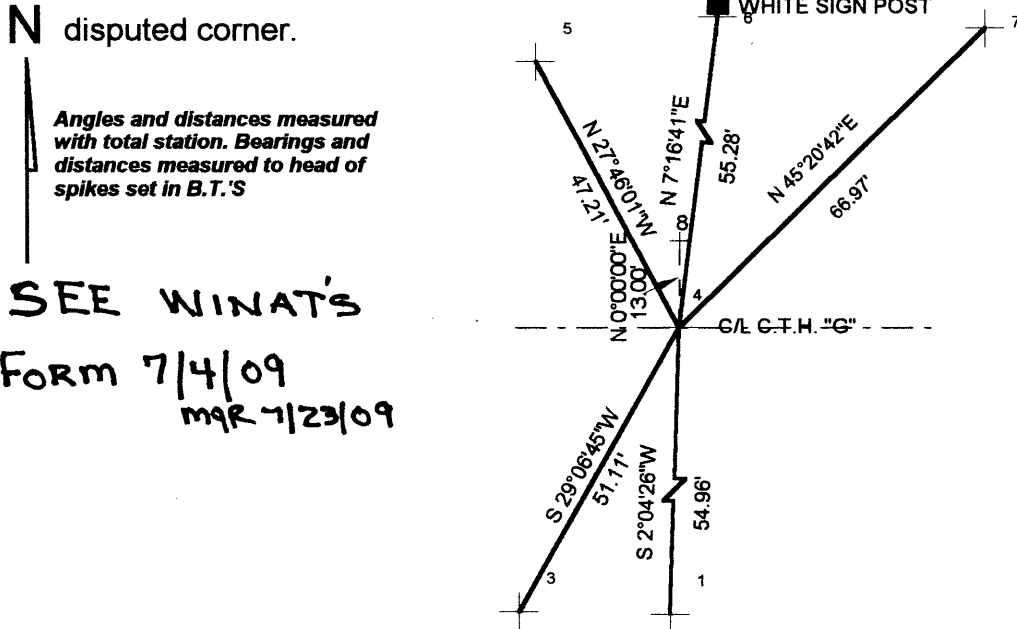
See U.S. Land Survey Monument Record form T-17 for history of corner.

-1977- WILLIAM IMMICH- Notes iron pin in c/l not the 1/4 corner. Notes iron pipe 13.00' north of c/l.

- PRECONSTRUCTION - Found P.K. nail and some accessories as noted on above said form T-17

- APRIL 2005 POST CONSTRUCTION, KEVIN BIXBY - Reset 4" P.K. nail and witnessed as shown below.

(c) (d) (e) Plan view of corner with ties to at least 4 witness monuments. If in disagreement with previously established corner, show the distances between the two corners and also indicate the ties to the disputed corner.



SCALE: 1"=30'

LEGEND

- 1- EXISTING 2" I.P.
- 3- SET SPIKE IN 18" W.BIRCH (EXISTING B.T.)
- 4- SET 4" P.K. NAIL
- 5- SET SPIKE IN 18" CEDAR (EXISTING B.T.)
- 6- EXISTING O.C.W.M. (NOTES COR. 55.00' SOUTH)
- 7- SET SPIKE IN 20" CEDAR (EXISTING B.T.)
- 8- POSITION AS NOTED ON O.C.S.M. # C820

Angles and distances measured with total station. Bearings and distances measured to head of spikes set in B.T.'S

SEE WINAT'S FORM 7/4/09
 MQR 7/23/09

(i) I, KEVIN P. BIXBY

(type or print name) certify that the corner location on this record was determined by me or under my direction and control and that this U.S. Public Land Survey Monument Record is correct and complete to the best of my knowledge and belief.

Kevin P. Bixby 04/10/05
 Signature Date



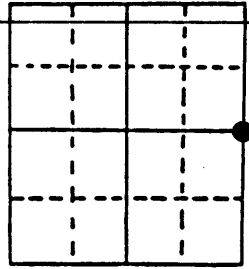
Stamp
 3510272000

Index No. T-17

U.S. PUBLIC LAND SURVEY MONUMENT RECORD

Note: This form is intended and designed to fulfill all requirements of Wisconsin Administrative Code, Chapter A-E 7.08 U.S. Public Land Survey Monument Record (3) (a) (b) (c) (d) (e) (f) (g) (h) (i). An additional sheet may be added if necessary to conform with said requirements.

(a) Corner location: Township 35 North
 Range 10 East/West
 Town/City/Village ENTERPRISE
 County ONEIDA



Section 27

(b) (f) (g) (h) Description of monument found at this corner and if it was accepted, state all evidence (material, testimonial, occupational, plats, records, other monuments) used as a basis for accepting. If not accepted or if nothing was found, state evidence used as basis for establishing location. If reestablished through lost corner proportionate methods, indicate all monuments, distances and directions used to establish. Indicate type of monument found or set and sign post.

History * Original to 1950 on back with dimensions of record.

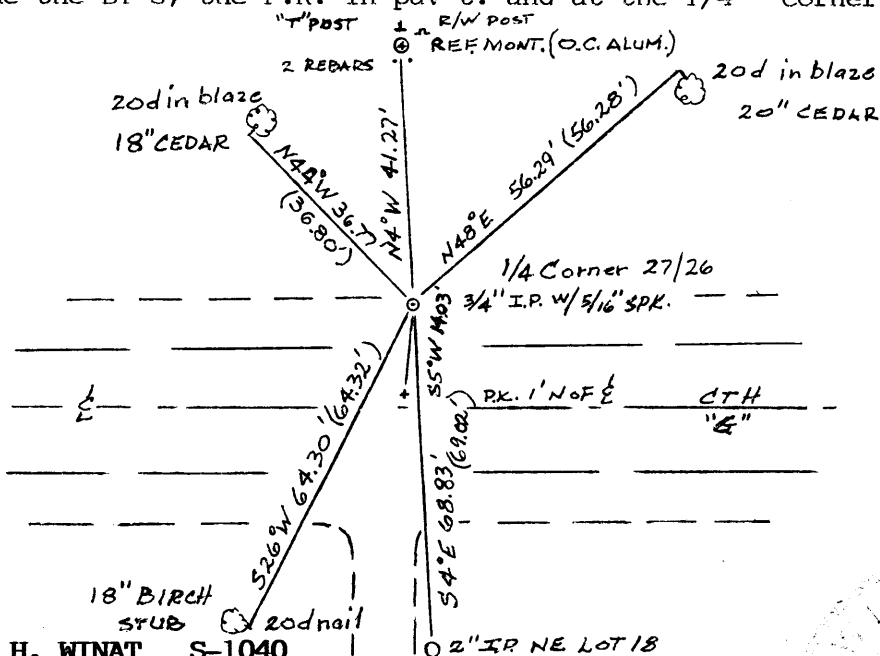
August '72 Found hole and set nail near centerline of pav't. Wood R/W post North, 54.25' to center, with David McMullen.

October '75 Found P.K.nail over our old nail, with Daniel G. DeWeert. Confer with William G. Immich on corner position - he wants to hold H.C.Hall's survey of Section 26, as CTH "G" survey has 5' blunder in Section 27 and we've found no direct evidence of Hall's corner (post 2 rods north - set iron pipe) as noted in the highway survey in 1950 (road rebuilt in 1951).

July '77 Set 3/4"x24" iron pipe to fit record from H.C.Hall's survey/ William G. Immich and to fit R/W post to the north. Lays in the north shoulder 14' north of P.K. nail. BT's (nail in side, blazed & painted) 14" Cedar N44°W, 36.80', 12" W. Birch S26°W, 64.32' and 9" Cedar N48°E, 56.28'. 2" iron pipe S04°E, 69.02' - NE corner Lot 18, Pelican Hills. 10/30/90 W.F.Kelly files corner record, tying out P.K.nail near centerline "G" to BT's and lot corner.

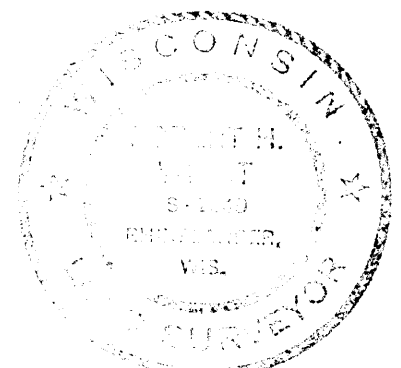
April 2000 I found 1/4th Corner 27/26 down 4" in shoulder, survey of revised Lot 9. 04/10/05 K.P.Bixby files corner record resetting P.K. nail at Kelly's position.

(c) (d) (e) Plan view of corner with ties to at least 4 witness monuments. If in disagreement with previously established corner, show the distances between the two corners and also indicate the ties to the disputed corner. 4 July 2009 I & J.R.Winat find 3/4"x24" iron pipe down 6" in north shldr. recheck ties - find pipe has shifted northerly 1/4 ft. (from highway reconstruction?). Reset iron pipe to match old BT's & used 5/16"x12" spike to bring to surface. Repainted blue the BT's, the P.K. in pav't. and at the 1/4th Corner in shoulder.



(i) I, ROBERT H. WINAT S-1040
 (type or print name) certify that the corner location on this record was determined by me or under my direction and control and that this U.S. Public Land Survey Monument Record is correct and complete to the best of my knowledge and belief.

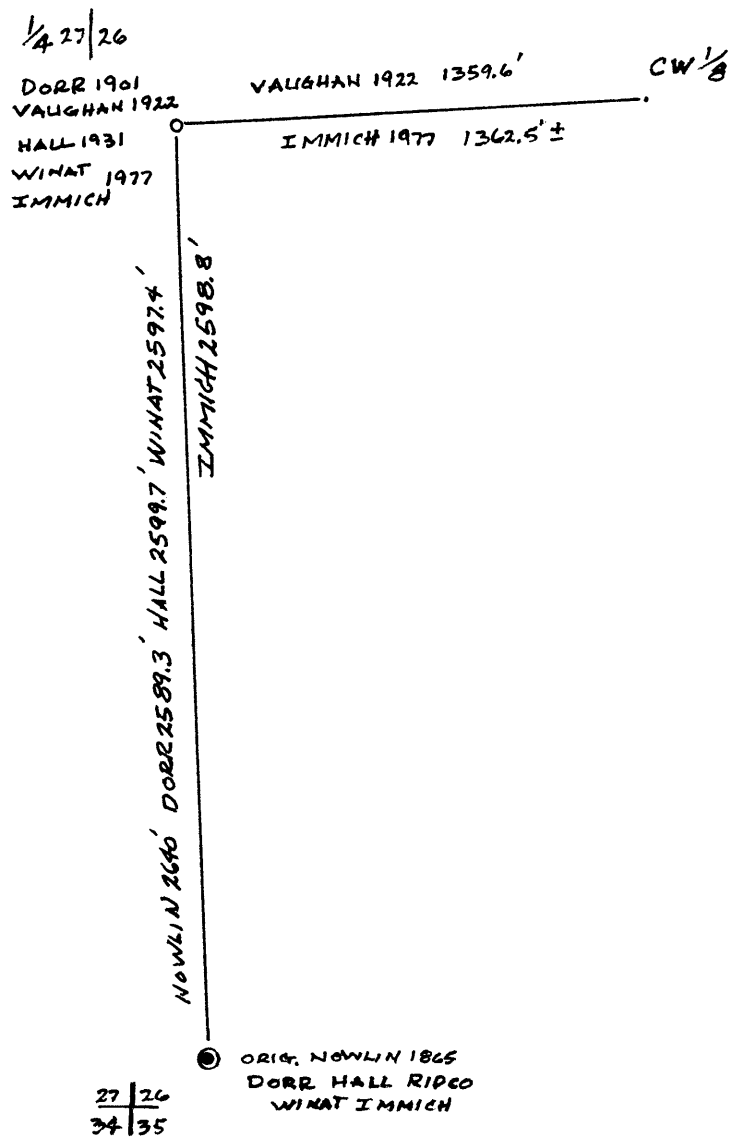
Robert H. Winat Signature 4 JULY 2009 Date



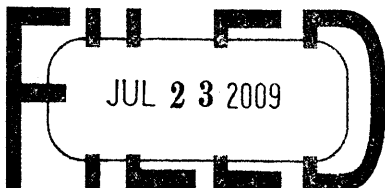
351027 2000
 PAGE 1 of 2
 Stamp

Index No. T-17

James L. Nowlin, Deputy Surveyor, 23 Sept. 1865. North bet. Sec. 26 & 27, Var 7°E, 32.50 Swamp brs. S.W.N.E. 40.00 Set 1/4th Sec. post Birch 8 S20E 151ks. Hemlock 8 N15W 20 lks.
 B.F. Dorr Sept. 1901 orig. north betwn. 26 & 27 2589.26' to 1/4th no BT's
 D.H. Vaughan Aug. 1922 find Dorr's 1/4th in road w/posts N&S B#83-P105.
 H.C. Hall May 1931 orig. north betwn. 26 & 27 2599.7' to 1/4th position. set spk. 2 rods south & make BT's - drive I.P. down 6" in road. B#83-P.107-9, O.C.S. Bk.P. 217- 220. Found post 2 rods north.
 L.M. Peters 1950 highway survey CTH "G" find post marked "1/4th south 2 rods; 14' north of centerline highway to 1/4th Corner.



REGISTER OF DEEDS OFFICE
 ONEIDA COUNTY, WIS.



At _____ O'Clock _____ M
 THOMAS H. LEIGHTON
 REGISTER OF DEEDS