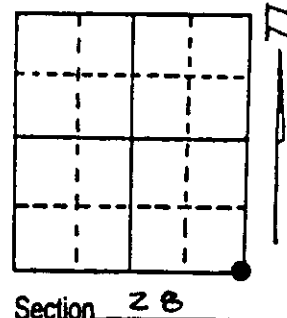
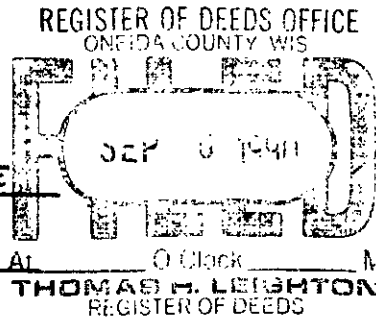


U.S. PUBLIC LAND SURVEY MONUMENT RECORD

Note: This form is intended and designed to fulfill all requirements of Wisconsin Administrative Code, Chapter A-E 7.08 U.S. Public Land Survey Monument Record (3) (a) (b) (c) (d) (e) (f) (g) (h) (i). An additional sheet may be added if necessary to conform with said requirements.

(a) Corner location: Township 35 North
 Range 10 East/West



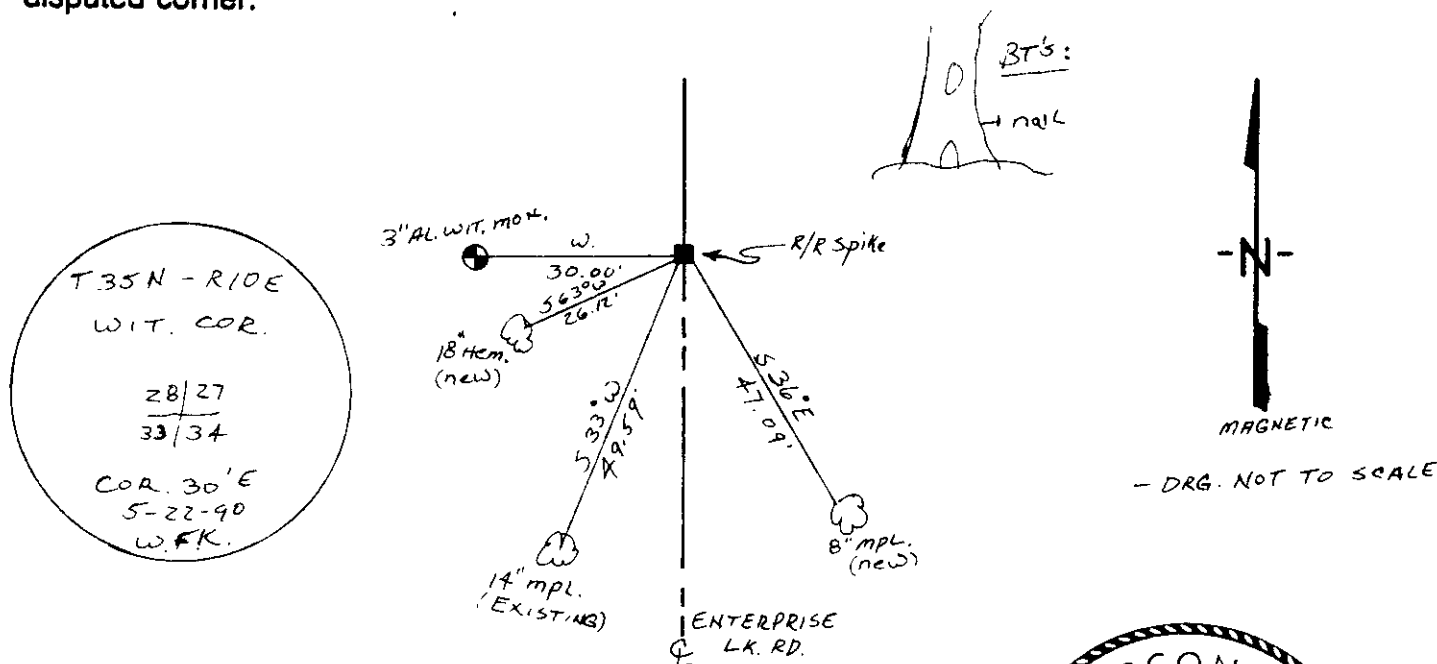
Town/City/Village E. ENTERPRISE W. SCHOEPEKE

County ONEIDA

(b) (f) (g) (h) Description of monument found at this corner and if it was accepted, state all evidence (material, testimonial, occupational, plats, records, other monuments) used as a basis for accepting. If not accepted or if nothing was found, state evidence used as basis for establishing location. If reestablished through lost corner proportionate methods, indicate all monuments, distances and directions used to establish. Indicate type of monument found or set and sign post.

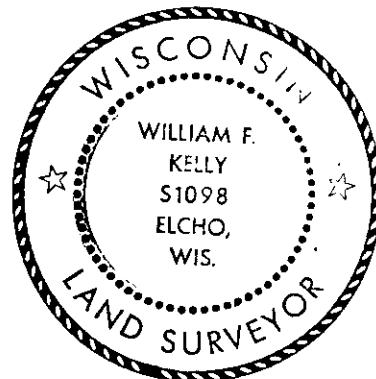
- 1865 - JAMES NOWLIN ESTABLISHED ORIGINAL CORNER
- 1896 - DORR MARKED NEW BEARING TREE
- 1902 - D.H. VAUGHAN USED CORNER.
- 1978 - CORNER USED IN CONTROL FOR EAGLE LAKE WOODS SUB-DIVISION
- 1990 - I FOUND IRON UNDER SURFACE OF ROAD. SET R/R SPIKE OVER IRON & SET 3" AL. WITNESS MONUMENT WEST OF CORNER. SET POST NEXT TO AL. WIT MONUMENT - MARKED BEARING TREES

(c) (d) (e) Plan view of corner with ties to at least 4 witness monuments. If in disagreement with previously established corner, show the distances between the two corners and also indicate the ties to the disputed corner.



(i) I, WILLIAM F. KELLY
 (type or print name) certify that the corner location on this record was determined by me or under my direction and control and that this U.S. Public Land Survey Monument Record is correct and complete to the best of my knowledge and belief.

William F. Kelly
 Signature _____ Date _____



Index No. 5-13

Stamp
 3510280000