

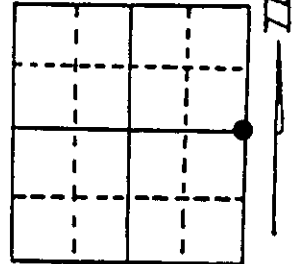
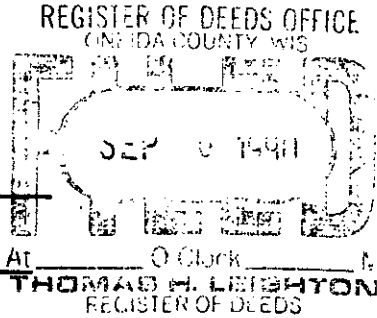
U.S. PUBLIC LAND SURVEY MONUMENT RECORD

Note: This form is intended and designed to fulfill all requirements of Wisconsin Administrative Code, Chapter A-E 7.08 U.S. Public Land Survey Monument Record (3) (a) (b) (c) (d) (e) (f) (g) (h) (i). An additional sheet may be added if necessary to conform with said requirements.

(a) Corner location: Township 35 North
 Range 10 East/West

Town/City/Village E. PELICAN W. SCHOEPEKE

County ONEIDA



Section 28

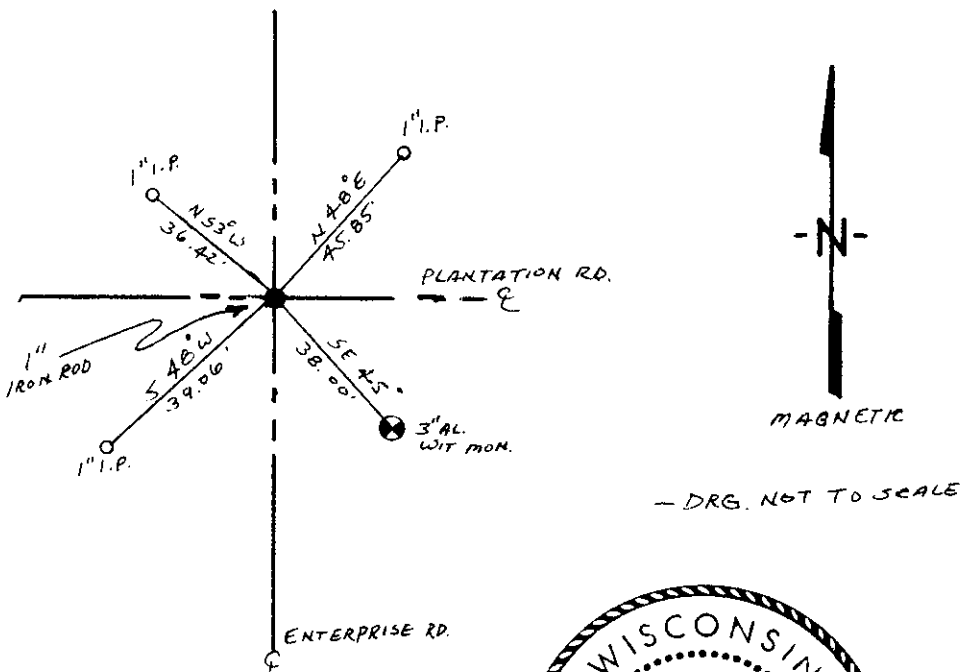
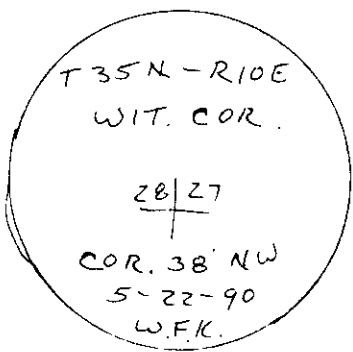
(b) (f) (g) (h) Description of monument found at this corner and if it was accepted, state all evidence (material, testimonial, occupational, plats, records, other monuments) used as a basis for accepting. If not accepted or if nothing was found, state evidence used as basis for establishing location. If reestablished through lost corner proportionate methods, indicate all monuments, distances and directions used to establish. Indicate type of monument found or set and sign post.

1865 - JAMES NOWLIN ESTABLISHED ORIGINAL CORNER.

1990 - I FOUND 1" IRON ROD IN ROAD SET 3" AL. WIT. MONUMENT SE OF CORNER. SET 1" IRON PIPE WITNESS MON. AND ONEIDA COUNTY POST AT WIT. MON.

RESIDENT WITNESS (P. RIEGERT) IDENTIFIED LOCATION OF CORNER

(c) (d) (e) Plan view of corner with ties to at least 4 witness monuments. If in disagreement with previously established corner, show the distances between the two corners and also indicate the ties to the disputed corner.



(i) I, WILLIAM F. KELLY
 (type or print name) certify that the corner location on this record was determined by me or under my direction and control and that this U.S. Public Land Survey Monument Record is correct and complete to the best of my knowledge and belief.



William F. Kelly 9-28-90
 Signature Date

Stamp
 3510282000

Index No. F-13

U.S. PUBLIC LAND SURVEY MONUMENT RECORD

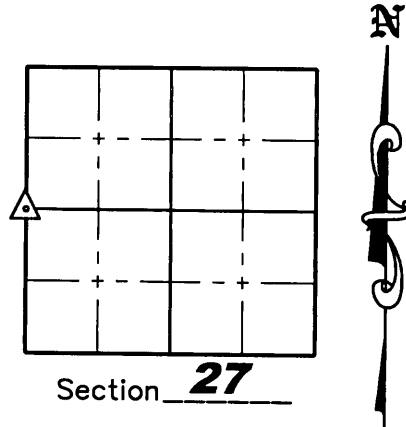
NOTE: This form is intended and designed to fulfill all requirements of Wisconsin Administrative Code, Chapter A-E 7 .08 U.S. Public Land Survey Monument Record (3)(a)(b)(c)(d)(e)(f)(g)(h)(i). An additional sheet may be added if necessary to conform with said requirements.

(a) Corner location: Township 35 North

Range 10 East

Town of Enterprise

County of Oneida



(b)(f)(g)(h) Description of monument found at this corner and if it was accepted, state all evidence (material, testimonial, occupation, plats, records, other monuments) used as a basis for accepting. If not accepted or if nothing was found, state evidence used as a basis for establishing location. If reestablished through lost corner proportionate methods, indicate all monuments, distances and directions used to establish. Indicate type of monument found or set and sign post.

September/October 1865 – James L. Nowlin set original 1/4 Section post; BT's: Sugar 20", S26°W, 4 links; Sugar 10", S16°E, 15 links

1990 – William F. Kelly Found 1" iron rod in road and set 3" Aluminum Witness Monument Southeast of corner. He also set 3 other 1" iron pipes as witness corners. Resident Witness (P. Riegert) identified location of corner.

September 14, 2000 – Kevin Bixby found a 1" iron rod per Plat of Survey (O.C.L.I.O. Map Number B4599).

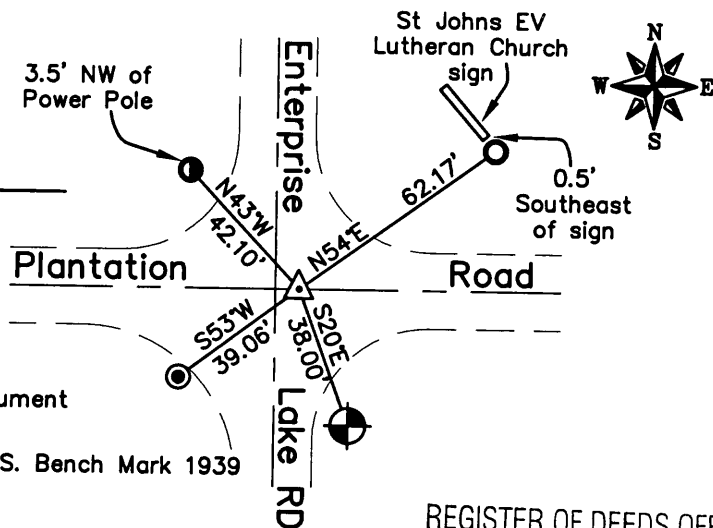
May 20, 2008 – Matthew E. Hogle went to corner and found the 1" Iron Rod and the Southwesterly and Southeasterly witness corners set by William Kelly in 1990. We set a P.K. Nail on the surface and witnessed the corner as shown hereon.

(c)(d)(e) Plan view of corner with ties to at least 4 witness monuments. If in disagreement with previously established corner, show the distances between the two corners and also indicate the ties to the disputed corner.

Scale 1" = 50'

Legend

- △ P.K. Nail Set over 1" Iron Rod
- 3/4" x 24" Iron Rebar Set Weighing 1.50 lbs/lin ft.
- 1" Iron Pipe Found
- ⊕ Found 3" Aluminum Witness Monument
- ⦿ Found 3" Cap in Concrete/U.S.G.S. Bench Mark 1939



(i) I, Matthew E. Hogle, certify that the corner location on this record was determined by me under my direction and control and that this U.S. Public Land Survey Monument is correct and complete to the best of my knowledge and belief.

Signature Matthew E. Hogle Date 5/27/08
 3510282000

REGISTER OF DEEDS OFFICE
ONEIDA COUNTY, WIS.

JUN 11 2008

At _____ O'Clock _____ M
THOMAS H. LEIGHTON
 REGISTER OF DEEDS

INDEX T-13