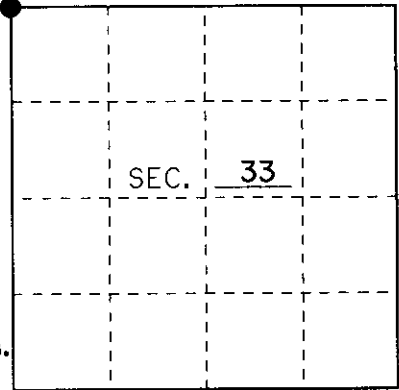


# U.S. PUBLIC LAND SURVEY MONUMENT RECORD

Note: This form is intended and designed to fulfill all requirements of Wisconsin Administrative Code, Chapter A-E 7.08 U.S. Public Land Monument Record (3)(a)(b)(c)(d)(e)(f)(g)(h)(i). An additional sheet may be added if necessary to conform with said requirements.

(a) CORNER LOCATION: NORTH LINE County or State Plane Coordinates  
NW SECTION Corner of Section 33 Northing \_\_\_\_\_  
 Township 35 North Easting \_\_\_\_\_  
 Range 10 East Datum Base \_\_\_\_\_  
 Township/City ENTERPRISE County of ONEIDA



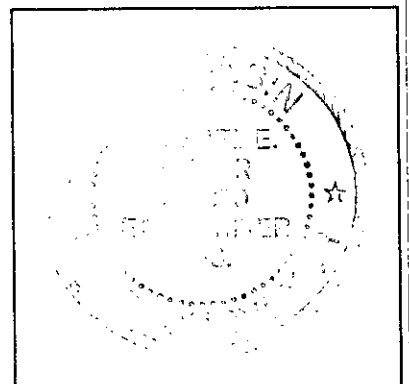
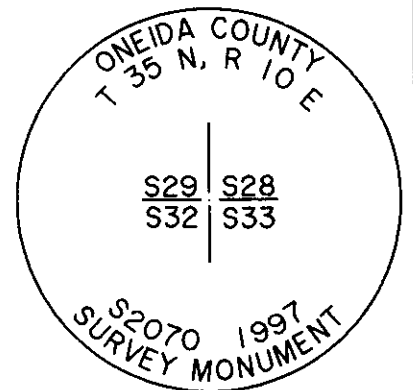
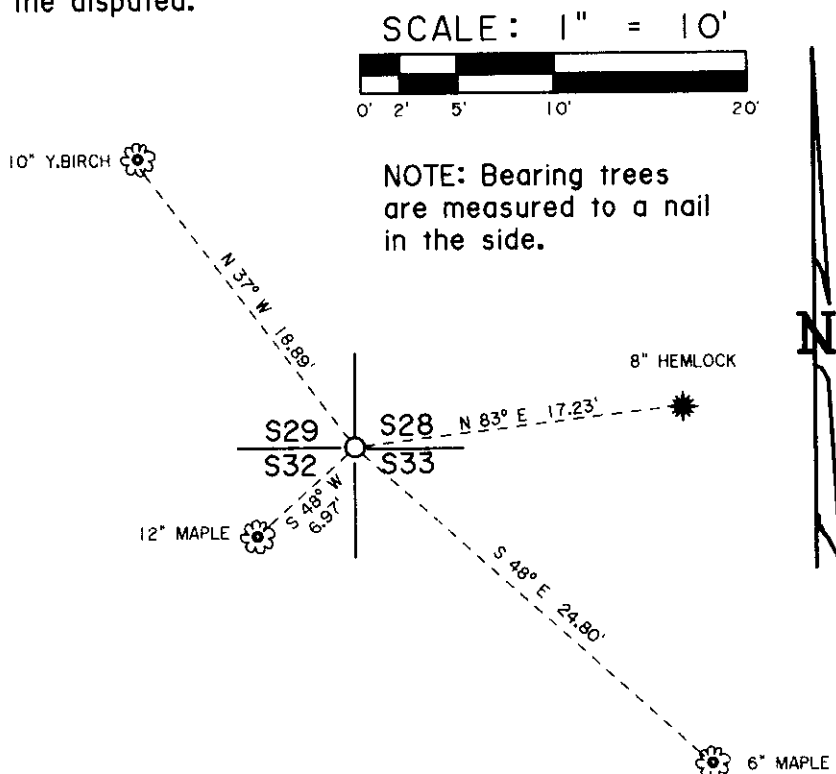
(b) HISTORY OF ORIGINAL CORNER ESTABLISHMENT Original B.T.'s  
 Original Surveyor: JAMES L. NOWLIN 16" BIRCH N 15° W 2 Lks.  
 Date of Survey: SEPTEMBER 1865 15" SUGAR MAPLE S 60° E 6 Lks.

(b)(f)(g)(h) Description of monument found at this corner and if it was accepted, state all evidence (material, testimonial, occupational, plats, records, other monuments) used as a basis for accepting. If not accepted or if nothing was found, state evidence used as basis for establishing location. If reestablished through lost corner proportionate methods, indicate all monuments, distances and directions used to establish. Indicate type of monument and sign post found or set.

9/26/1865: JAMES L. NOWLIN SET SECTION CORNER POST BETWEEN SECTIONS 29, 28, 32, AND 33.

12/19/97: I, MICHAEL E. WEBER FOUND NO EVIDENCE OF THE ORIGINAL CORNER OR ORIGINAL BEARING TREES. I ESTABLISHED CORNER POSITION AT THE INTERSECTION OF BLAZED LINES RUNNING SOUTH AND WEST. POSITION FIT CALL OF 1 CHAIN NORTH TO THE SWAMP FROM THE ORIGINAL NOTES. I SET AN 2" X 30" ONEIDA COUNTY ALUMINUM MONUMENT AT THE POSITION ESTABLISHED. I MADE FOUR NEW BEARING TREES AS SHOWN BELOW. I SET A PLASTIC SIGN POST AT 1' NORTH EAST OF CORNER.

(c)(d)(e) Plan view of the corner with ties to at least 4 witness monuments. If in disagreement with previously established corner, show the distances between the two corners and also indicate the ties to the disputed.



(i) I, Michael E. Weber R.L.S. No. 2070  
 hereby certify that the corner location on this record was determined by me or under my direction and control and that this U.S. Public Land Survey Monument Record is correct and complete to the best of my knowledge and belief.

Signature Michael E. Weber Date 10-6-99

3510290000

Index No. V - 9