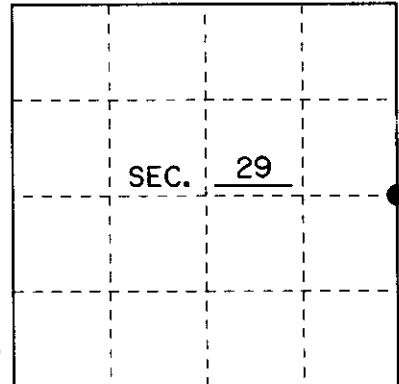


# U.S. PUBLIC LAND SURVEY MONUMENT RECORD

Note: This form is intended and designed to fulfill all requirements of Wisconsin Administrative Code, Chapter A-E 7.08 U.S. Public Land Monument Record (3)(a)(b)(c)(d)(e)(f)(g)(h)(i). An additional sheet may be added if necessary to conform with said requirements.

(a) CORNER LOCATION: EAST LINE County or State Plane Coordinates  
E 1/4 Corner of Section 29 Northing \_\_\_\_\_  
 Township 35 North Easting \_\_\_\_\_  
 Range 10 East Datum Base \_\_\_\_\_  
 Township/City ENTERPRISE County of ONEIDA



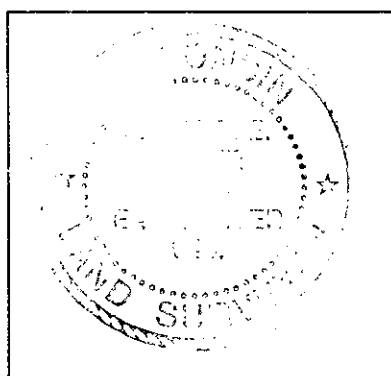
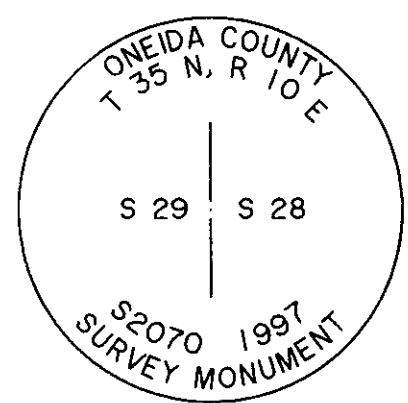
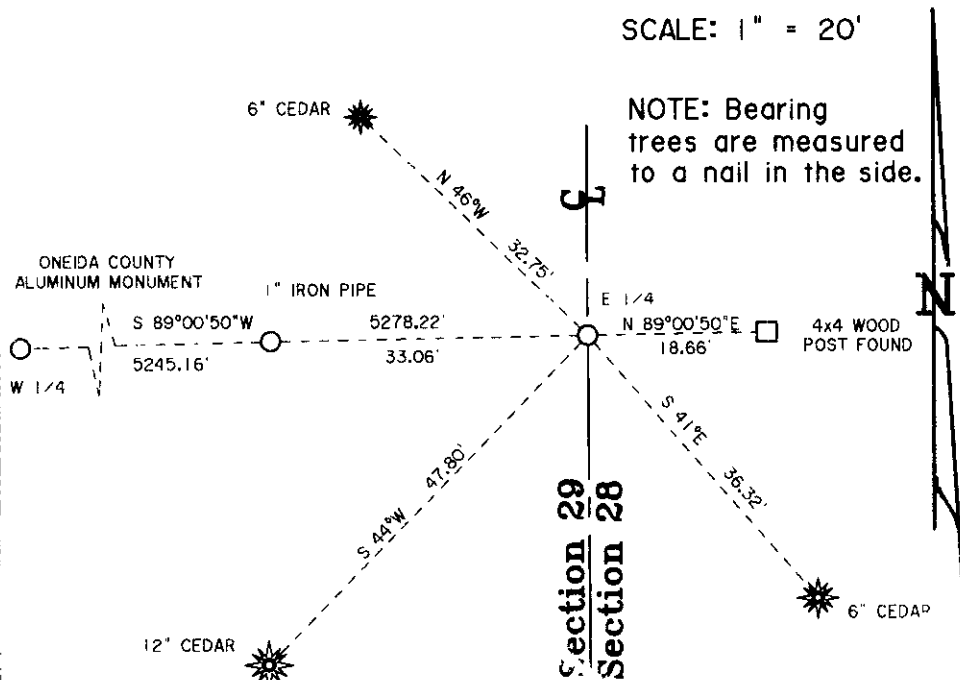
(b) HISTORY OF ORIGINAL CORNER ESTABLISHMENT Original B.T.'s  
 Original Surveyor: JAMES L. NOWLIN 12" TAMARACK N 55° E 6 Lks.  
 Date of Survey: SEPTEMBER 1865 10" TAMARACK S 55° W 4 Lks.

(b)(f)(g)(h) Description of monument found at this corner and if it was accepted, state all evidence (material, testimonial, occupational, plats, records, other monuments) used as a basis for accepting. If not accepted or if nothing was found, state evidence used as basis for establishing location. If reestablished through lost corner proportionate methods, indicate all monuments, distances and directions used to establish. Indicate type of monument and sign post found or set.

9/26/1865: JAMES L. NOWLIN SET EAST 1/4 CORNER WITH WOOD POST

12-19-97 I, MICHAEL E. WEBER FOUND NO EVIDENCE OF THE ORIGINAL CORNER. I SET A 2" x 30" ONEIDA COUNTY ALUMINUM MONUMENT AT THE CENTERLINE OF A NORTH-SOUTH ROAD, AND ON LINE BETWEEN THE W 1/4 CORNER AND A FOUND 4x4 WOOD POST EAST OF SAID NORTH-SOUTH ROAD. I SET A PLASTIC SIGN POST 11' WEST OF ONEIDA COUNTY ALUMINUM MONUMENT. I SET A 1" I.P. AND MADE THREE NEW BEARING TREES AS SHOWN BELOW.

(c)(d)(e) Plan view of the corner with ties to at least 4 witness monuments. If in disagreement with previously established corner, show the distances between the two corners and also indicate the ties to the disputed.



(i) I, MICHAEL E. WEBER R.L.S. No. 2070

hereby certify that the corner location on this record was determined by me or under my direction and control and that this U.S. Public Land Survey Monument Record is correct and complete to the best of my knowledge and belief.

Signature Michael E. Weber Date 10-8-99

3510292000

Index No. T - 9