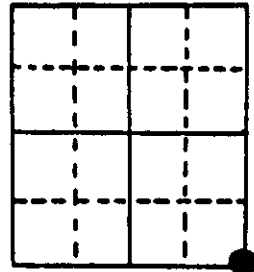
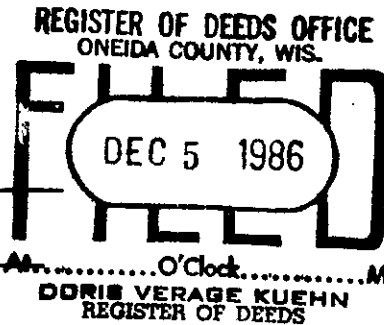


U.S. PUBLIC LAND SURVEY MONUMENT RECORD

Note: This form is intended and designed to fulfill all requirements of Wisconsin Administrative Code, Chapter A-E 5.02, U.S. Public Land Survey Monument Record (3) (a) (b) (c) (d) (e) (f) (g) (h) (i). An additional sheet may be added if necessary to conform with said requirements.

(a) Corner location: Township 35 North
 Range 10 East/West
 Town/City/Village ENTERPRISE
 County ONEIDA

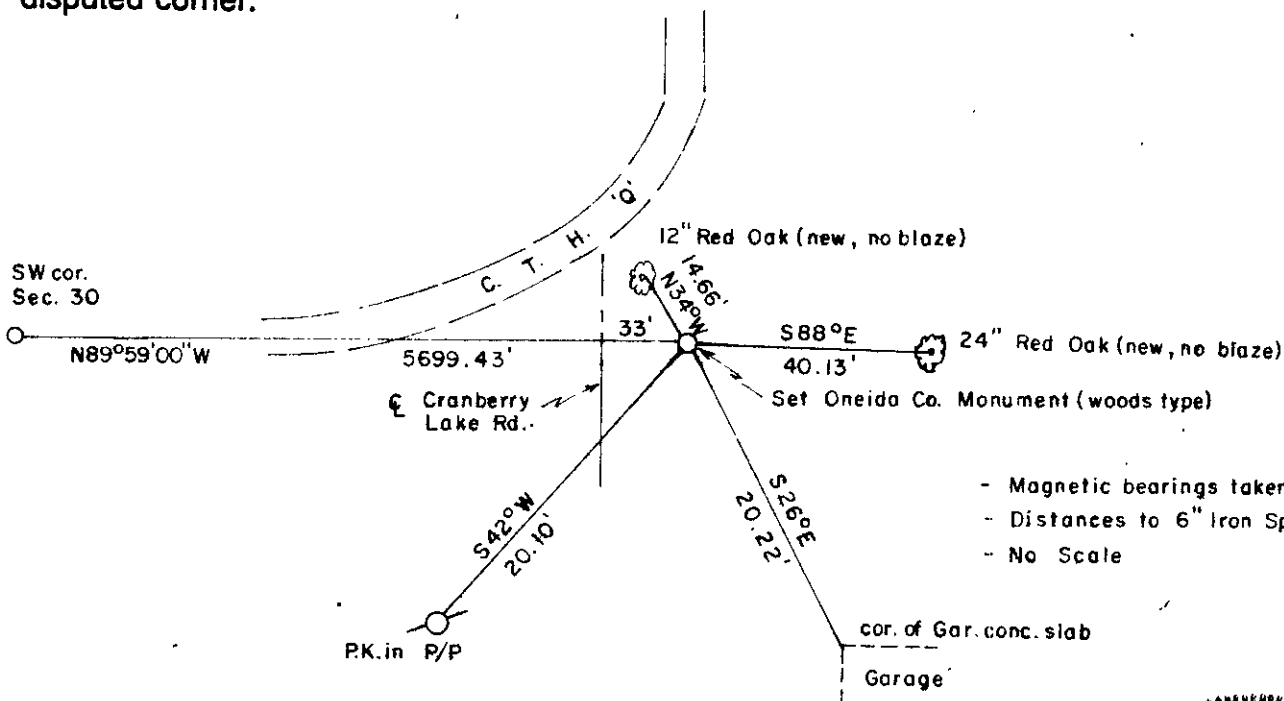


SE
SEC.
COR.

(b) (f) (g) (h) Description of monument found at this corner and if it was accepted, state all evidence (material, testimonial, occupational, plats, records, other monuments) used as a basis for accepting. If not accepted or if nothing was found, state evidence used as basis for establishing location. If reestablished through lost corner proportionate methods, indicate all monuments, distances and directions used to establish.

- 1865 James L. Nowlen established corner of 29,30,31,32 at 80.00 ch. north of town line. BTs; Sugar, 8, N 32 E, 10, Sugar, 18, S 43 W, 20.
- 1908 D.H. Vaughn went to corner of 29-30-31-32, set post from a sugar stump which Cushman swears was the orig. BT., and that he cut it down and showed him the log with marks on it, run west var. 5°W, 86.46 fell 4.26 south of corner, corrected line east to corner for road.
- 1986 At this corner I was unable to find any monument or bearing trees, or resident witness to show me exactly where the corner was, so I established the corner by using a calculated straight line distance of Vaughns random from the sw corner and used the existing centerline for alignment. This position fell just on the east side of a town road going south and in alignment of C.T.H. Q from the north. I checked this position each way for occupation and could not find anything that would dispute this position. OVER.....

(c) (d) (e) Plan view of corner with ties to at least 4 witness monuments. If in disagreement with previously established corner, show the distances between the two corners and also indicate the ties to the disputed corner.



- Magnetic bearings taken with handheld compass
- Distances to 6" Iron Spike in side of tree
- No Scale

(i) I, MICHAEL J. ROMPORTL R.L.S. 1624
 (type or print name) certify that the corner location on this record was determined by me or under my direction and control and that this U.S. Public Land Survey Monument Record is correct and complete to the best of my knowledge and belief.

Michael J. Romportl Oct. 26, 1986
 Signature Date



Index No. V-5

Stock No. 26273

1986 con't

This is the general location of the corner as recognized by the local landowners, I monumented the position and witnessed it as shown , on the reverse side of this sheet.

1908 Town of Enterprise highway notice makes reference to a road along the section line to this corner.

V 5

U.S. PUBLIC LAND SURVEY MONUMENT RECORD

NOTE: This form is intended and designed to fulfill all requirements of Wisconsin Administrative Code, Chapter A-E 7 .08 U.S. Public Land Survey Monument Record (3)(a)(b)(c)(d)(e)(f)(g)(h)(i). An additional sheet may be added if necessary to conform with said requirements.

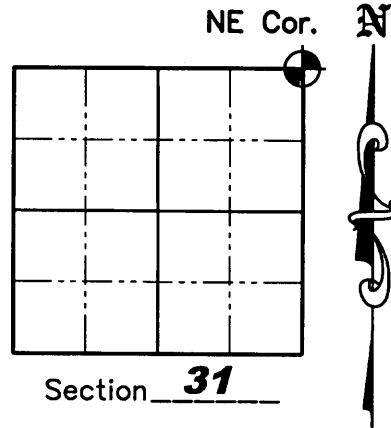
(a) Corner location: Township 35 North
 Range 10 East

Town of Enterprise

County of Oneida

Oneida County Coordinates

N 108520.587
 E 298217.203



(b)(f)(g)(h) Description of monument found at this corner and if it was accepted, state all evidence (material, testimonial, occupation, plats, records, other monuments) used as a basis for accepting. If not accepted or if nothing was found, state evidence used as a basis for establishing location. If reestablished through lost corner proportionate methods, indicate all monuments, distances and directions used to establish. Indicate type of monument found or set and sign post.

1865 – James L. Nowlen established original corner of 29, 30, 31 and 32 at 80.00 ch. North of town line. BT's: 8" Sugar, N32E, 10 lks.; 18" Sugar, S43W, 20 lks.

1908 – D.H. Vaughn went to corner of 29, 30, 31 and 32, Set post from a sugar stump which Cushman swears was the original BT and that he cut it down and showed him the log with marks on it. He ran West var. 5W, 86.46 ch. and fell 4.26 ch. South of corner and corrected line East for road.

1908 – Town of Enterprise highway notice makes reference to a road along the section line to this corner.

1986 – Michael J. Romportl was unable to find any monument, bearing trees or resident witness to show him exactly where the corner was, so he established the corner by using a calculated straight line distance of Vaughns random from the Southwest corner of Section 30 and used the existing centerline for alignment. This position fell just on the East side of a town road going South and in alignment of County Highway "Q" from the North. He checked this position each way for occupation and could not find anything that would dispute this position. This is the general location of the corner as recognized by the local landowners. He set an Oneida County Aluminum Monument and witnessed the corner as follows: 12" Red Oak N34W, 14.66'; 24" Red Oak, S88E, 40.13'; P.K. in power pole, S42W, 20.10'; Corner of garage concrete slab, S26E, 20.22'

April 11, 2008 – Jonathan W. Dulin found and accepted an Oneida County Aluminum monument at the corner location. I witnessed the corner as shown on sheet 2 hereof.

(c)(d)(e) Plan view of corner with ties to at least 4 witness monuments. If in disagreement with previously established corner, show the distances between the two corners and also indicate the ties to the disputed corner.

See Sheet 2 hereof

(i) I, Jonathan W. Dulin, certify that the corner location on this record was determined by me under my direction and control and that this U.S. Public Land Survey Monument is correct and complete to the best of my knowledge and belief.

Signature Jonathan W. Dulin Date 7/11/08

REGISTER OF DEEDS OFFICE
 ONEIDA COUNTY, WIS.

FILED

MAY 14 2008

At _____ O'Clock _____ M
THOMAS H. LEIGHTON
 REGISTER OF DEEDS

Sheet 1 of 2
 3510300000

Index No. V-5

