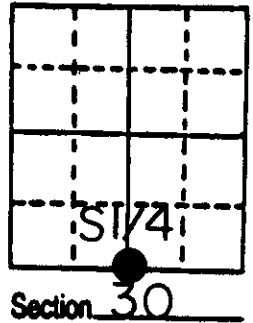


U.S. PUBLIC LAND SURVEY MONUMENT RECORD

Note: This form is intended and designed to fulfill all requirements of Wisconsin Administrative Code, Chapter A-E 5.02, U.S. Public Land Survey Monument Record (3) (a) (b) (c) (d) (e) (f) (g) (h) (i). An additional sheet may be added if necessary to conform with said requirements.

(a) Corner location: Township 35 North
 Range 10 East/West
 Town/City/Village ENTERPRISE
 County ONEIDA

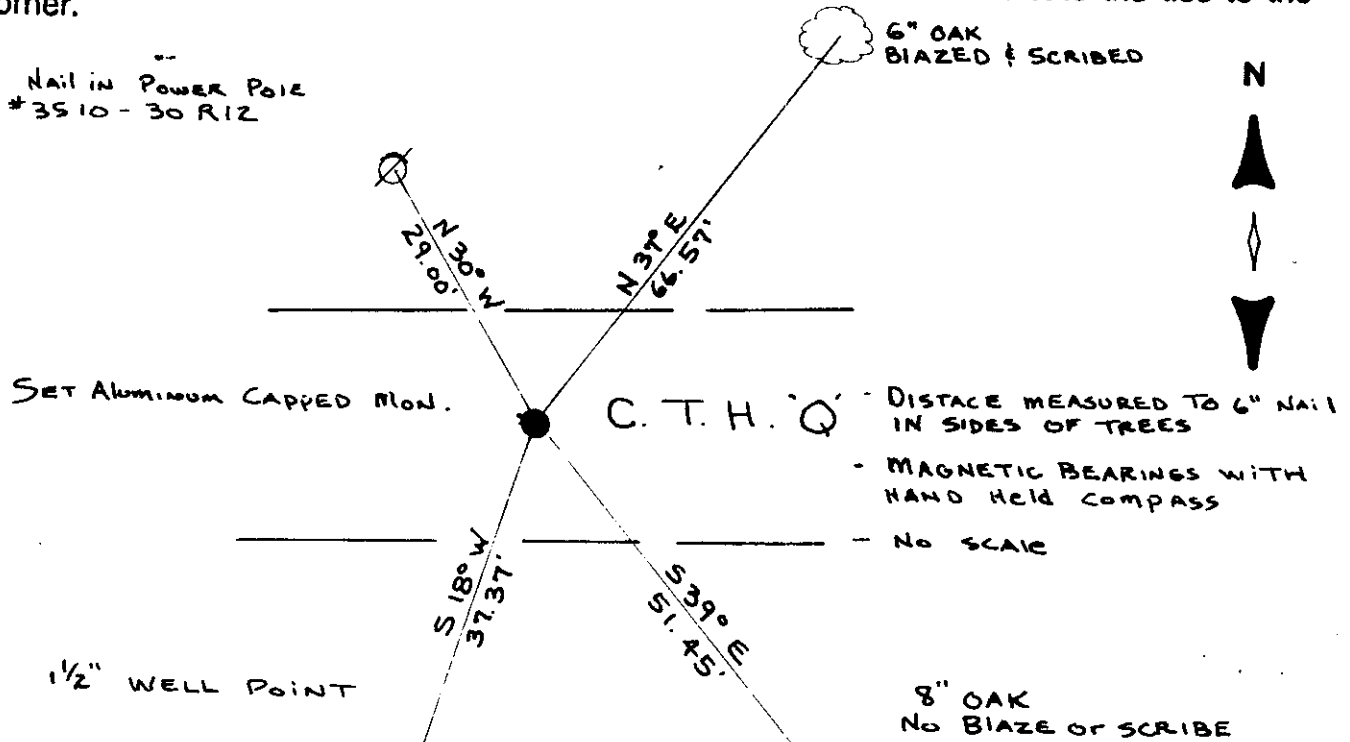
REGISTER OF DEEDS OFFICE
 ONEIDA COUNTY, WIS.
FILED
 DEC 5 1986
 DORIS VERAGE KUEHN
 REGISTER OF DEEDS



(b) (f) (g) (h) Description of monument found at this corner and if it was accepted, state all evidence (material, testimonial, occupational, plats, records, other monuments) used as a basis for accepting. If not accepted or if nothing was found, state evidence used as basis for establishing location. If reestablished through lost corner proportionate methods, indicate all monuments, distances and directions used to establish.

- 1865-James L. Nowlen established original corner between 30 & 31 @ 42.10 ch. east of range line: B.T.s Tam. 12 S42°E 22lks., Sugar 8 N82°W 60lks.
- 1908-D.H. Vaughan run west from corner of 29,30,31,32 86.46ch fell 4.26 south of corner on range line, corrected line east for road, he made no mention of the 1/4 corner.
- 1908-Town of Enterprise highway notice makes reference to a road along the section line.
- 1986-I established this corner by proportionate measure since there was no record of this corner ever being found, and I set an aluminum capped monument and witnessed it as shown below. I found a well point on the S.W. side of the road as reported to me by Donald Kunze and Cecil Jenkins but it is believed to have been set by a local landowner according to Cecil Jenkins who did some logging for the landowner some years ago.

(c) (d) (e) Plan view of corner with ties to at least 4 witness monuments. If in disagreement with previously established corner, show the distances between the two corners and also indicate the ties to the disputed corner.



(i) I, MICHAEL J. ROMPORTL R.L.S. 1624
 (type or print name) certify that the corner location on this record was determined by me or under my direction and control and that this U.S. Public Land Survey Monument Record is correct and complete to the best of my knowledge and belief.

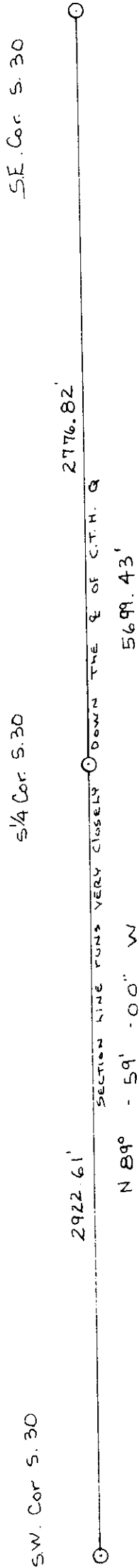
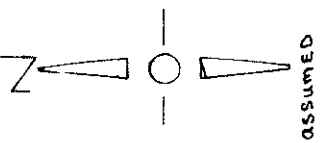
Michael J. Romportl Oct 27, 1986
 Signature Date

GENISOT & ASSOCIATES INC.
 1512 EAGLE ST., RHINE, WI.

Index No 1-3

 Page 1 of 2

Stock No. 26273



V 3

U.S. PUBLIC LAND SURVEY MONUMENT RECORD

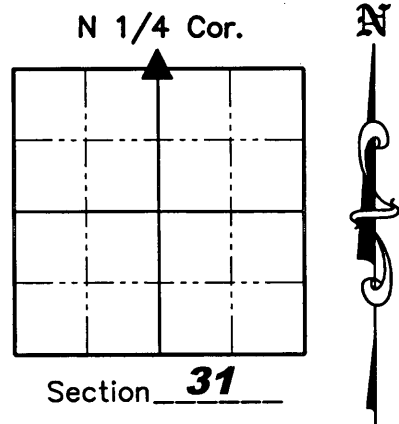
NOTE: This form is intended and designed to fulfill all requirements of Wisconsin Administrative Code, Chapter A-E 7.08 U.S. Public Land Survey Monument Record (3)(a)(b)(c)(d)(e)(f)(g)(h)(i). An additional sheet may be added if necessary to conform with said requirements.

(a) Corner location: Township 35 North

Range 10 East

Town of Enterprise

County of Oneida



(b)(f)(g)(h) Description of monument found at this corner and if it was accepted, state all evidence (material, testimonial, occupation, plats, records, other monuments) used as a basis for accepting. If not accepted or if nothing was found, state evidence used as a basis for establishing location. If reestablished through lost corner proportionate methods, indicate all monuments, distances and directions used to establish. Indicate type of monument found or set and sign post.

1865 – James L. Nowlen established original corner between 30 and 31 @ 42.10 chs East of range line: BT's: 12" Tamarack, S42°E, 22 lks.; 8" Sugar, N82°W, 60 lks.

1908 – D.H. Vaughan ran West from corner of 29, 30, 31 and 32, 86.46 ch. and fell 4.26 ch. South of corner on range line. He corrected line East for Road and made no mention of the 1/4 corner.

1908 – Town of Enterprise highway notice makes reference to a road along the section line.

1986 – Michael J. Romportl established this corner by proportionate measure since there was no record of this corner ever being found. He set an aluminum capped monument and witnessed the corner. He found a well point on the Southwest side of the road as reported by Donald Kunze and Cecil Jenkins, but it is believed to have been set by a local landowner according to Cecil Jenkins who did some logging for the landowner some year ago. BT's: Nail in power pole #3510-30R12, N30°W, 29.00'; 6" Oak blazed and scribed, N37°E, 66.57'; 8" Oak, S39°E, 51.45'; 1-1/2" well point S18°W, 37.37'

1999 – Devon Vanden Heuvel tied out corner prior to road construction on County Highway "Q". He notes the 1-1/2" well point and the 6" Oak tree to the Northeast from Michael Romportl and four concrete monuments. He also says that he reset a P.K. Nail at the corner location. This was a preliminary U.S.P.L.S. Monument Record which we found in our records which is NOT on file with Oneida County.

April 11, 2008 – Jonathan W. Dulin found and accepted a P.K. nail at the corner location on the centerline of County Highway "Q". I witnessed the corner as shown on sheet 2 hereof.

(c)(d)(e) Plan view of corner with ties to at least 4 witness monuments. If in disagreement with previously established corner, show the distances between the two corners and also indicate the ties to the disputed corner.

See Sheet 2 hereof

(i) I, Jonathan W. Dulin, certify that the corner location on this record was determined by me under my direction and control and that this U.S. Public Land Survey Monument is correct and complete to the best of my knowledge and belief.


 Signature _____ Date 4/11/08

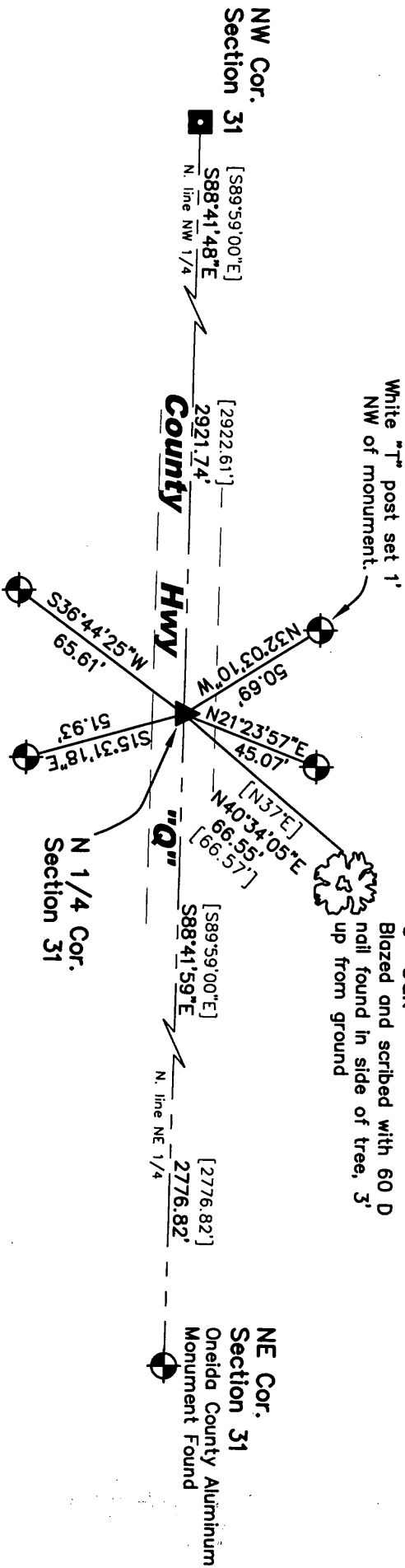

REGISTER OF DEEDS OFFICE
ONEIDA COUNTY, WIS.

MAY 14 2008

At _____ O'Clock _____ M
THOMAS H. LEIGHTON
 REGISTER OF DEEDS

Index No. V-3

U.S. PUBLIC LAND SURVEY MONUMENT RECORD



Legend

- ▲ Found P.K. Nail
- Found Railroad Spike
- ⊕ Found Oneida County Aluminum Monument set in concrete (unless otherwise noted)

[46.57'] Record Dimensions

GRAPHIC SCALE

