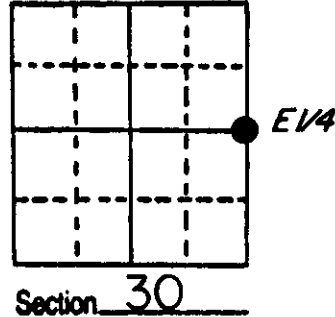
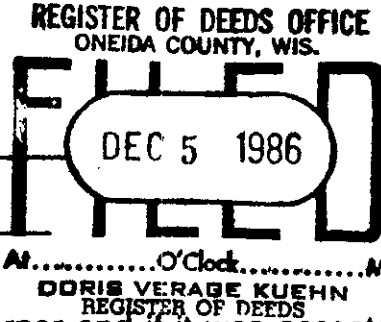


U.S. PUBLIC LAND SURVEY MONUMENT RECORD

Note: This form is intended and designed to fulfill all requirements of Wisconsin Administrative Code, Chapter A-E 5.02, U.S. Public Land Survey Monument Record (3) (a) (b) (c) (d) (e) (f) (g) (h) (i). An additional sheet may be added if necessary to conform with said requirements.

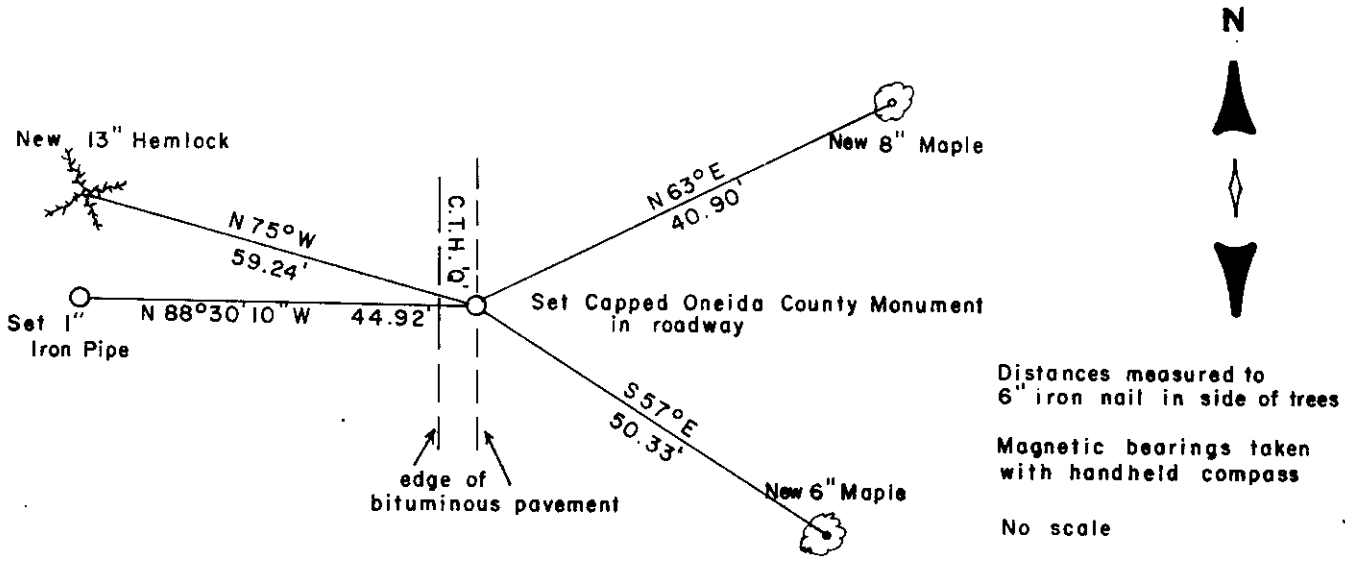
(a) Corner location: Township 35 North
 Range 10 East/West
 Town/City/Village ENTERPRISE
 County ONEIDA



(b) (f) (g) (h) Description of monument found at this corner and if it was accepted, state all evidence (material, testimonial, occupational, plats, records, other monuments) used as a basis for accepting. If not accepted or if nothing was found, state evidence used as basis for establishing location. If reestablished through lost corner proportionate methods, indicate all monuments, distances and directions used to establish.

- 1865-James L. Nowlen established $\frac{1}{4}$ corner @ 40.00ch. north of corner 29,30,31,32: B.T.s Sugar 18 N58°E 6lks., Sugar 12 N81°W 25lks.
- !908-Town of Enterprise highway notice makes reference to a road running south from corner 19,20,29,30
- 1921-Wisconsin Highway Commission makes reference to road plans which I am unable to find as stated in the corner restoration sheet for the N.E. cor, S 30.
- !986-I was unable to get a definite position on the location of this corner so I established the corner by proportionate measure and set an aluminum capped monument and witnessed it as shown below. This corner falls on the east side of the traveledway of C.T.H. Q, it has been reported to me by A local landowner Cecil Jenkins that the roads center line was shifted west when it was rebuilt in the 1920's. The position of the corner is in the general location as recognized by the landowners and it checks for the distance splits with that of a old downed fence that runs east from the E1/16SE corner.

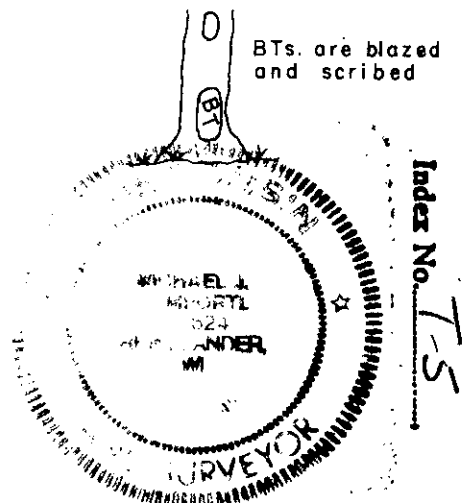
(c) (d) (e) Plan view of corner with ties to at least 4 witness monuments. If in disagreement with previously established corner, show the distances between the two corners and also indicate the ties to the disputed corner.



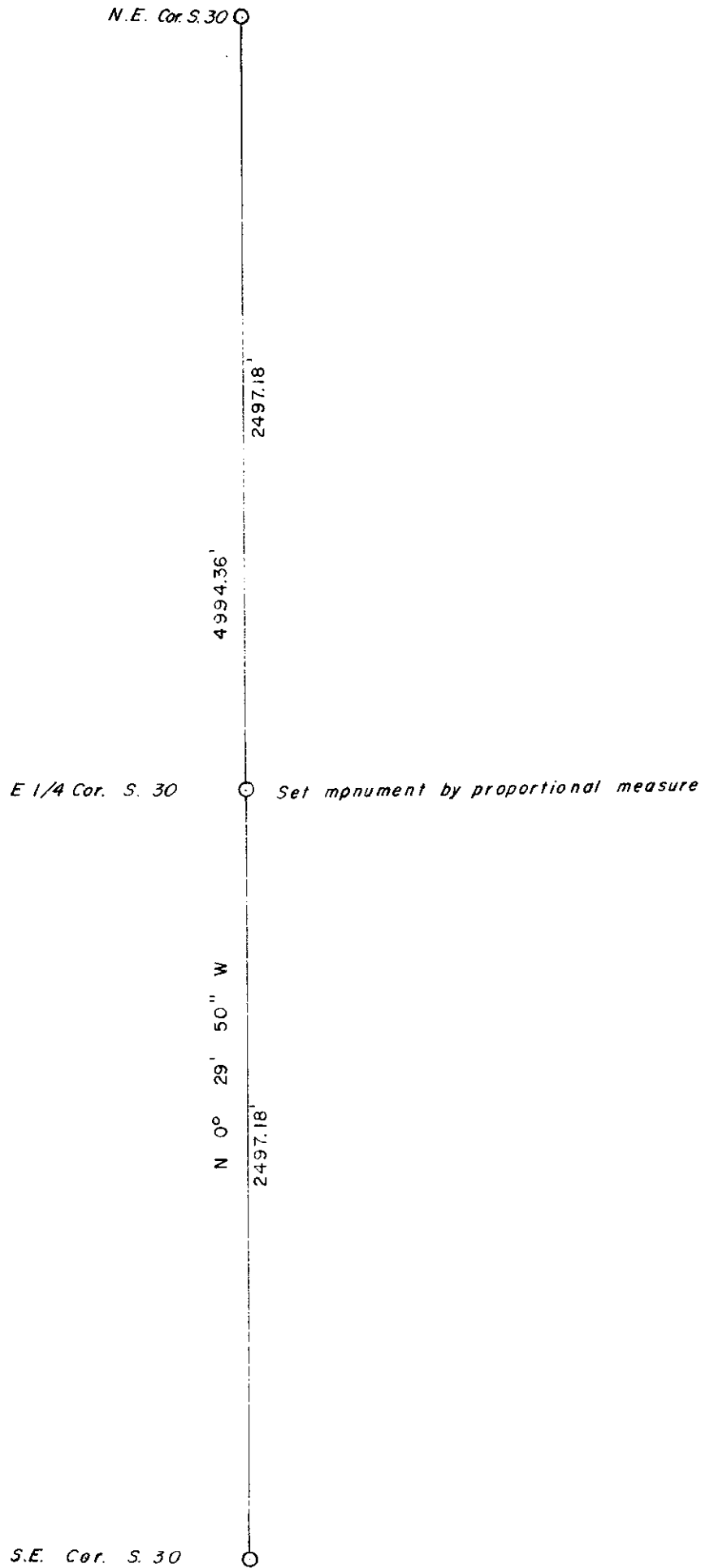
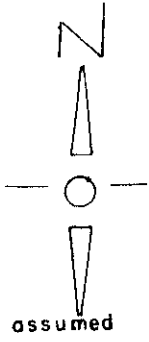
(i) I, MICHAEL J. ROMPORTL R.L.S. 1624
 (type or print name) certify that the corner location on this record was determined by me or under my direction and control and that this U.S. Public Land Survey Monument Record is correct and complete to the best of my knowledge and belief.

Michael J Romportl Oct. 27, 1986
 Signature Date

GENISOT & ASSOCIATES INC.
 12 EAGLE ST., RHINE, WI.



Stock No. 26273



T 5