

COUNTY U.S. PUBLIC LAND CORNER RESTORATION

The Quarter corner common to Sec.6-34-10 and Sec. 31-35-10. Langlade and Oneida County, WI.

Corner was: (check all that apply)

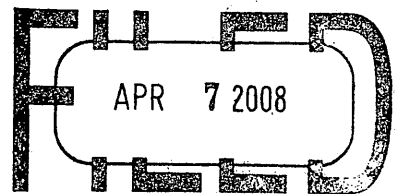
4351031 0020

- Restored through acceptance of an obliterated evidence location.
- Restored through acceptance of a found perpetuated location.
- Determined to be lost and re-established through proportionate methods.
 (Show bearings and distances to PLSS corners used for proportioning, and show original distances).
- Restored/recovered/re-established in a location that differs from a previously established position.
 (Show difference in plan view below).
- Check here if addition information is shown on the reverse side of this form.

Describe record evidence, recovered physical evidence, occupational evidence, testimonial evidence and all other evidence considered in the recovery/restoration of the corner.

The original corner was established in 1859 by Hiram C. Fellows, Deputy Surveyor. Original bearing trees: tamarac, 6", S15°W, 75 links and a tamarac, 7", N30°W, 80 links. In 1929, Malcolm Hutchinson surveyed in Section 6 and apparently found nothing at the corner and reset it by single proportion. In the 1939 resurvey of 34-10, Darwin Hintz said: "Set 1/4 cor. on Prop. Wooden stake set by Hutchinson some years ago and checks O.K. No. B.T." Hintz set a "4" boiler tubing filled with concrete, surmounted by a brass cap, on which is stamped the corner location". 03/26/08 Dave Tlusty, found a 4" iron pipe with brass cap stamped to identify corner. Accepted it as the monument set by Hintz in agreement with previous work by Hutchinson. I marked the bearing trees described below.

REGISTER OF DEEDS OFFICE
ONEIDA COUNTY, WIS.



At _____ O'Clock _____ M
THOMAS H. LEIGHTON
REGISTER OF DEEDS

Physical description of the monument set:

For the corner, I left the existing 4" iron pipe with brass cap in place. I set a white vinyl sign post, 0.4' north of the corner monument.

The area is all sparse black spruce swamp, trees ranging in size from 1" - 4". Area NW of the corner has been clear cut.

Describe the accessories used to perpetuate the corner. Include a plan view drawing and accessories found/set. Describe measuring point on bearing trees. Show any topographic

Quarter corner coordinates from static GPS survey

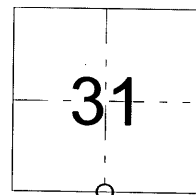
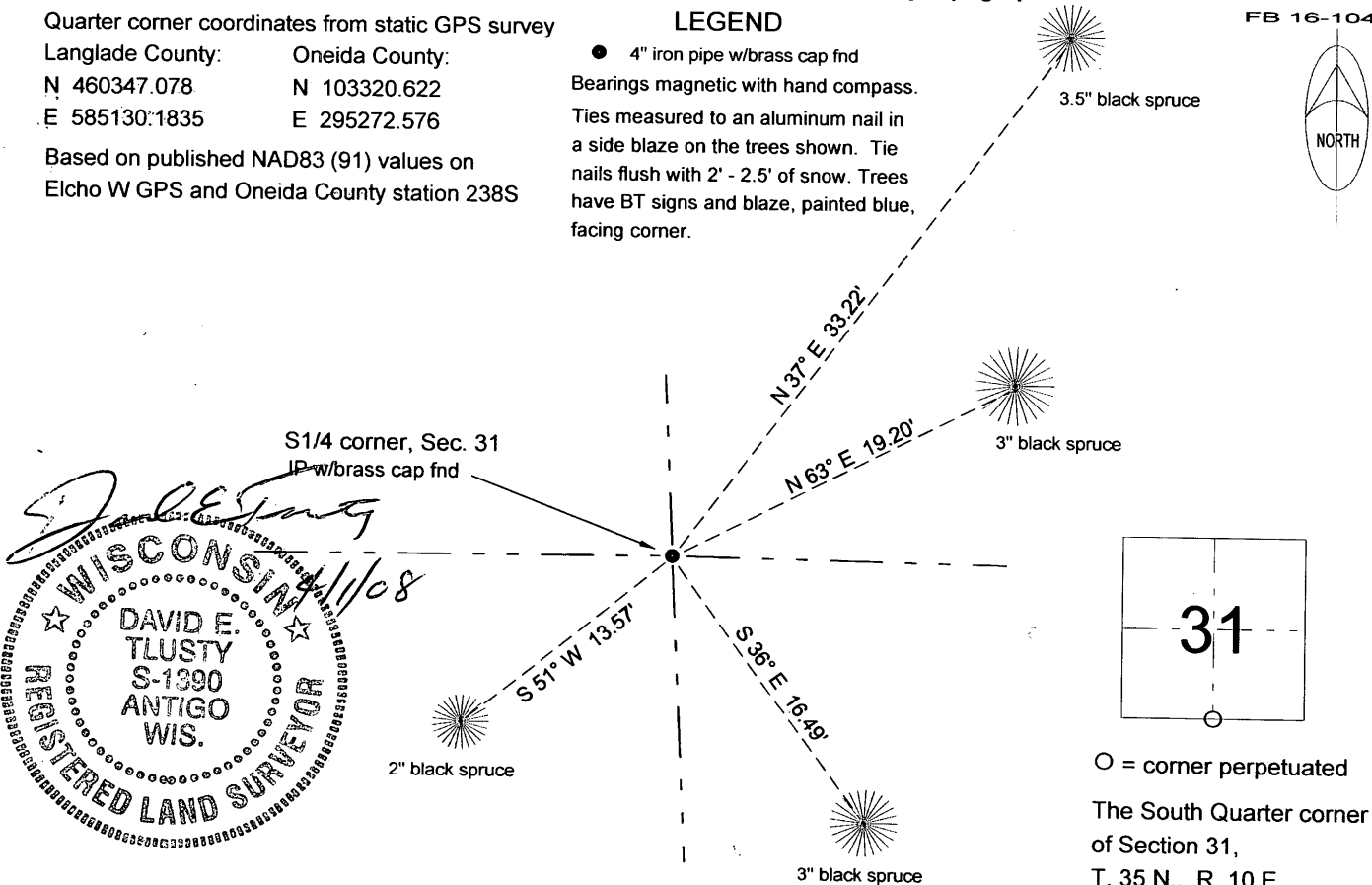
Langlade County:	Oneida County:
N 460347.078	N 103320.622
E 585130.1835	E 295272.576

Based on published NAD83 (91) values on Elcho W GPS and Oneida County station 238S

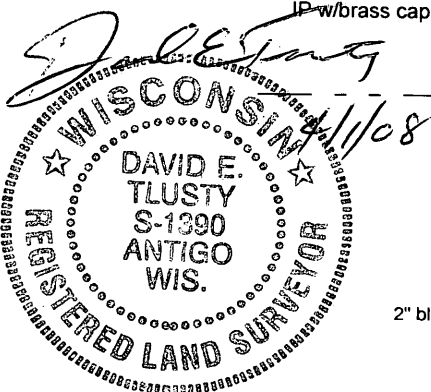
LEGEND

- 4" iron pipe w/brass cap fnd
- Bearings magnetic with hand compass.
- Ties measured to an aluminum nail in a side blaze on the trees shown. Tie nails flush with 2' - 2.5' of snow. Trees have BT signs and blaze, painted blue, facing corner.

FB 16-104



○ = corner perpetuated
The South Quarter corner of Section 31, T. 35 N., R. 10 E., Oneida County, WI



I, David E. Tlusty, Registered Land Surveyor, as Langlade County Surveyor, certify that the corner location on this record was determined by me and that this U.S. Public Land Survey Monument Record is correct to the best of my knowledge and belief.

Index No. 2-3 35-10 A-3 34-10

3510310020