

This form is intended to fulfill the requirements of Chapter A-E 7.08 (3)(a) thru (l) U.S. Public Land Survey Monument Location Record, Wisconsin Administrative Code. Use the reverse side of form for continuation.

U.S. PUBLIC LAND SURVEY MONUMENT LOCATION RECORD

USPLS CORNER: WEST 1/4 CORNER SECTION: 32 TOWNSHIP: 35 NORTH RANGE: 10 EAST

NAME OF WATERWAY FOR M.C. CORNER : N/A SECTION LINE: N/A

~~(CITY)(VILLAGE)~~(TOWN) OF: ENTERPRISE COUNTY OF: ONEIDA

Description of monument found or placed and all other evidence used as the basis for monument location; including monuments and related measurements required if the corner location was reestablished by lost corner proportionate methods. Also indicate name of original surveyor, original survey date and the corner monument, bearing trees, witness or other reference monuments established; including measured bearing and distance ties, from available records.

In September 1865, James L. Nowlin/GLO set a wood post as the original corner and marked OBTs: a 10" Hemlock S21°E 30 links and a 11" Hemlock N48°W 20 links; all are now obliterated.

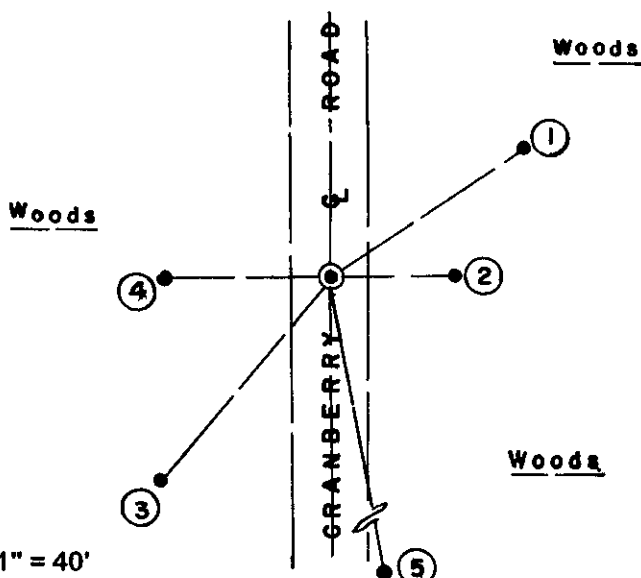
No other Oneida County survey records available nor any field evidence found to recover this corner location, other than the centerline of an existing North/South gravelled town road way, which was accepted as the best evidence of probable section line since the original GLO survey, as a right line between the NW and SW corners of Section 32 would fall 81 feet further into the woods West of Cranberry Road and also would cause unreasonable encroachment onto an improved private land parcel SW of this corner location.

Therefore, in cooperation with Oneida County surveyor Michael J. Romportl and local surveyors Devon Vanden Heuvel, Russell Brown and William Badow, I established this corner in the center of existing gravelled roadway named Cranberry Road at its intersection with the East/West center quarter line of Section 32 as established by Vanden Heuvel's previous subdivisional traverse of Section 32, per further data detailed upon the reverse of this record form.

I set a 5/8" dia. by 24" long rebar with uncapped top 6" below the gravelled roadway surface at the corner position above described and also set a standard white poly 'T' marker post near East witness monument rebar. The witness monument rebars East & West of corner were set at 90° from roadway centerline.

This recovery completed October 17, 2002; there were no direct witnesses.

Plan view map of monument location with bearing and distance ties to a minimum of four(4) described witness or reference monuments of concrete, natural stone, iron, live bearing trees or equivalent material. If applicable, also show a minimum of two(2) bearing and distance ties to any other monument found and not accepted; including the bearing and distance from the accepted monument.



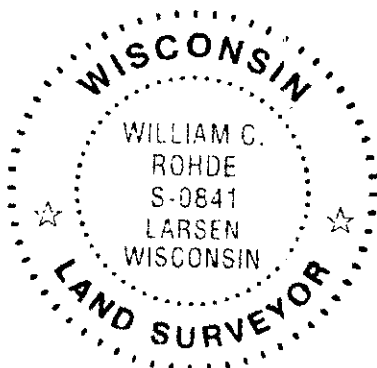
SCALE: 1" = 40'

Unless otherwise indicated, all bearing tree ties are to a .25" dia. by 2.5" long PK nail with a 1.25" dia. steel washer driven into unblazed right face and a .25" dia. by 2.5" long PK nail with a 2" dia. steel washer stamped BT is also driven into unblazed face of bearing tree at DBH; the basis for measured bearings is by compass to nearest degree and all tie distances are measured horizontal by steel tape corrected to nearest 1/100th feet at standard temperature of 68° F.

WITNESS MONUMENT TIES:

- ① New SW 13" Mr of double N55°E 48.53'.
 - ② 5/8" dia. x 24" long rebar set with yellow poly RM cap 1" up East 26.00'.
 - ③ New 13" Oak BT S40°W 55.35' to PK/W set 4.5' up in right face for level measure to corner.
 - ④ 5/8" x 24" long rebar set with yellow poly RM cap 1" up West 34.60'.
 - ⑤ Old 1" dia. iron shaft found 6" up S10°E 137.95' to hole in top center.
- A temporary 60d spike traverse point set in road center North 7.53'.

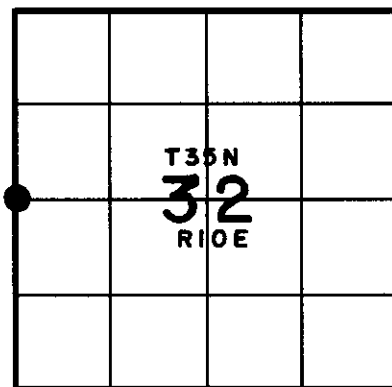
RLS SEAL:



LAND SURVEYOR CERTIFICATE:

I, William C. Rohde, hereby certify that I am duly licensed as a Professional Land Surveyor in the State of Wisconsin; that this USPLS monument location was determined by me and/or under my direct supervision and control; and that this U.S. Public Land Survey Monument Location Record is true and correct to the best of my knowledge and belief.

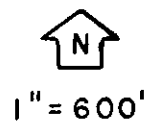
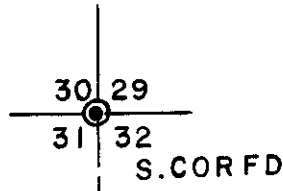
Signed: *William C. Rohde*
William C. Rohde RLS 841



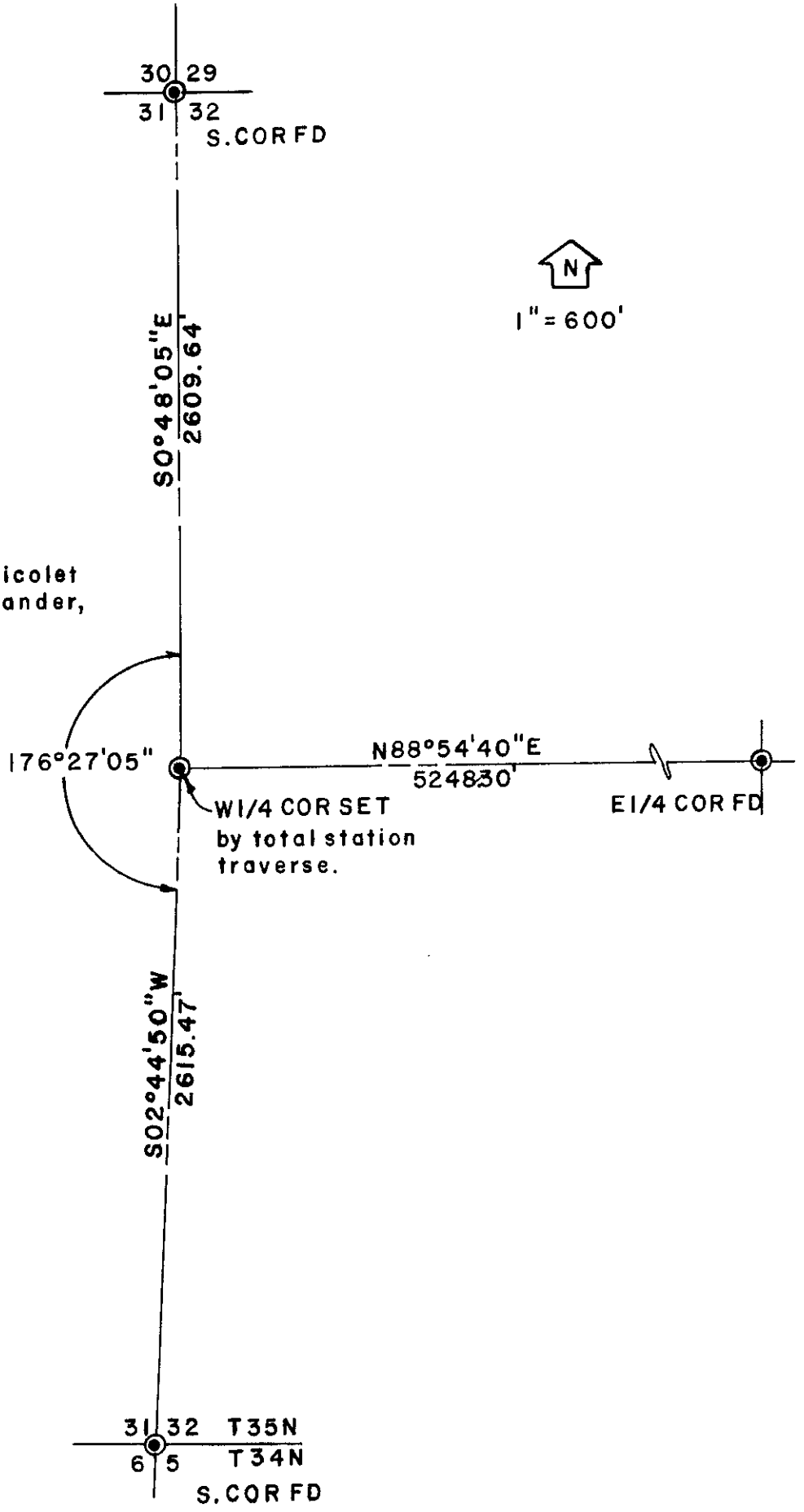
SECTION LOCATION MAP INDEX NO. X 5

3510312000

Stock No. 26273



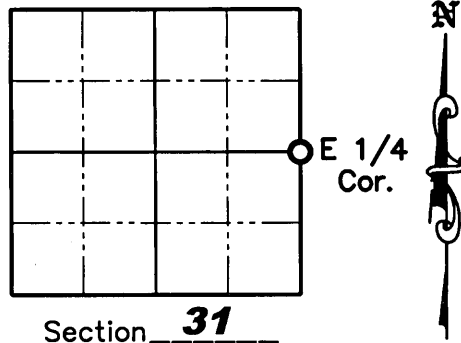
NOTE:
 Data shown from Nicolet
 Surveying, Rhinelander,
 Wis.



U.S. PUBLIC LAND SURVEY MONUMENT RECORD

NOTE: This form is intended and designed to fulfill all requirements of Wisconsin Administrative Code, Chapter A-E 7 .08 U.S. Public Land Survey Monument Record (3)(a)(b)(c)(d)(e)(f)(g)(h)(i). An additional sheet may be added if necessary to conform with said requirements.

(a) Corner location: Township 35 North
 Range 10 East
 Town of Enterprise
 County of Oneida



(b)(f)(g)(h) Description of monument found at this corner and if it was accepted, state all evidence (material, testimonial, occupation, plats, records, other monuments) used as a basis for accepting. If not accepted or if nothing was found, state evidence used as a basis for establishing location. If reestablished through lost corner proportionate methods, indicate all monuments, distances and directions used to establish. Indicate type of monument found or set and sign post.

September 1865 – James L. Nowlen established original corner. BT's: 10" Hemlock, S21°E, 30 lks.; 11" Hemlock, N48°W, 20 lks.

March 29, 2000 – Devon Vanden Heuvel shows he set a 3/4" iron rebar at the corner location per Oneida County Land Information Map number C1692.

October 17, 2002 – William C. Rohde visited corner and states no other Oneida County survey records available other than the original survey nor any field evidence found to recover this corner, other than the centerline of an existing North/South graveled town road way, which was accepted as the best evidence of probable section line since the original GLO survey, as straight line between the NW and SW corners of Section 32 would fall 81 feet further into the woods West of Cranberry Road and also would cause unreasonable encroachment onto an improved private land parcel SW of this corner. Therefore, in cooperation with Oneida County surveyor Michael J. Romportal and local surveyors Devon Vanden Heuvel, Russell Brown, and William Bandow, he established this corner in the center of an existing graveled roadway named Cranberry Road at its intersection with the East/West center quarter line of Section 32 as established by Vanden Heuvel's previous subdivisional traverse of Section 32. He set a 5/8" by 24" long rebar with uncapped top 6" below the graveled roadway surface at the corner position above described and also set a standard white poly "T" marker post near East witness monument rebar. The witness monument rebars East and West of corner were set at 90° from roadway centerline. Witness monuments set: 13" Double Maple, P.K. with washer in side of tree, N55°E, 48.53'; 5/8" rebar with yellow RM cap, East, 26.00'; 13" Oak, P.K. with washer set 4.5' up in right side of tree, S40°W, 55.35'; 5/8" rebar with yellow RM cap, West, 34.60', Old 1" iron shaft, S10°E, 137.95'

January 13, 2003 – Kevin Bixby found a 5/8" iron rod at the corner location per Oneida County Land Information Map number C1947.

April 11, 2008 – Jonathan W. Dulin visited corner and found four witness corner set by William Rohde. We dug for corner in the centerline of Cranberry Road and found nothing. We set a 3/4" by 24" iron rebar with a plastic 2-1/2" yellow cap, 12" below the gravel surface of Cranberry Road using the found witness corners and witnessed the corner as shown on sheet 2 hereof.

(c)(d)(e) Plan view of corner with ties to at least 4 witness monuments. If in disagreement with previously established corner, show the distances between the two corners and also indicate the ties to the disputed corner.

See Sheet 2 hereof

(i) I, Jonathan W. Dulin, certify that the corner location on this record was determined by me under my direction and control and that this U.S. Public Land Survey Monument is correct and complete to the best of my knowledge and belief.

Signature Jonathan W. Dulin Date 4/11/08

REGISTER OF DEEDS OFFICE
 ONEIDA COUNTY, WIS.

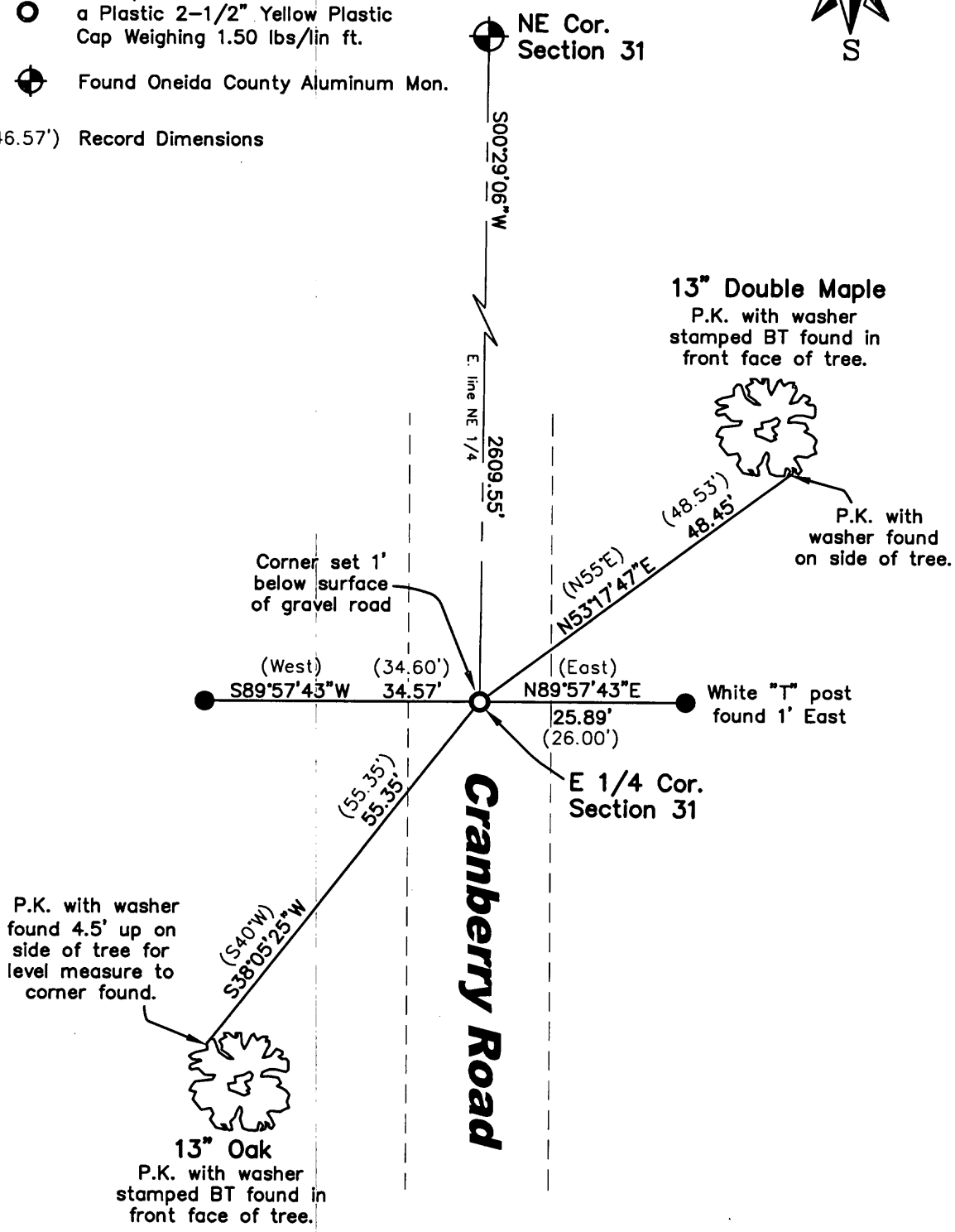
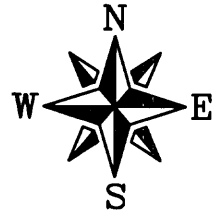
 At _____ O'Clock _____ M
THOMAS H. LEIGHTON
 REGISTER OF DEEDS
 Sheet 1 of 2
 3510312000

Index No. X-5

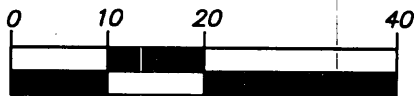
U.S. PUBLIC LAND SURVEY MONUMENT RECORD

Legend

- Found 5/8" iron rebar with a Yellow RM cap.
 - Set 3/4" x 24" Iron Rebar with a Plastic 2-1/2" Yellow Plastic Cap Weighing 1.50 lbs/lin ft.
 - ⊕ Found Oneida County Aluminum Mon.
- (46.57') Record Dimensions



GRAPHIC SCALE



(IN FEET)