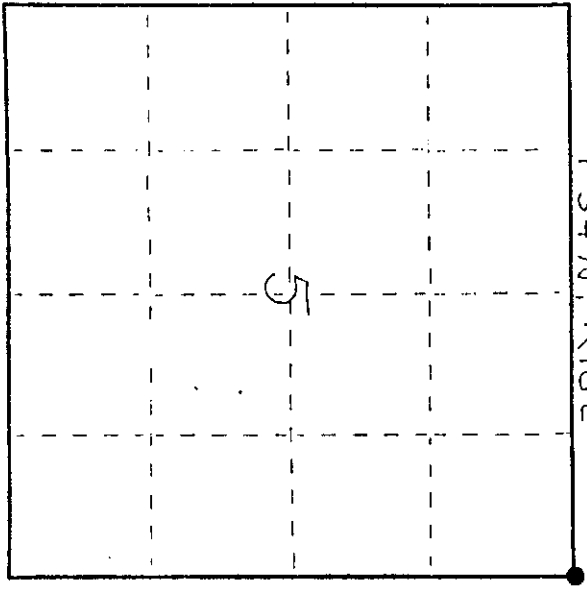


State of Wisconsin }  
 County of LANGLADE } ss.

I, WILLIAM F. KELLY, do hereby certify that on the 26th day of DECEMBER, 1980, I found evidence of the NE corner of Sec. 5, Township 34, North, Range 10 E, Fourth Principal Meridian, as described hereon; and that from this evidence I established a new monument and accessories as described hereon to perpetuate the original location of this corner.

Resident witnesses:



CERTIFIED LAND CORNER RESTORATION

History of original corner establishment:  
 ORIGINAL CORNER ESTABLISHED BY  
JAMES M. JOHNSON IN 1865.

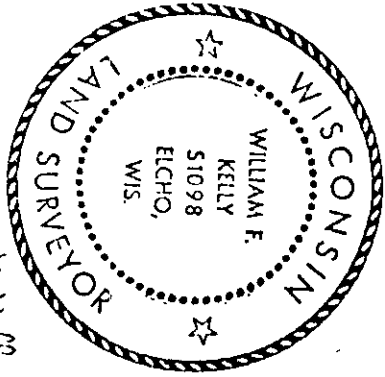
Copy from  
 Langlade City.

Index No. 2-9

35-10

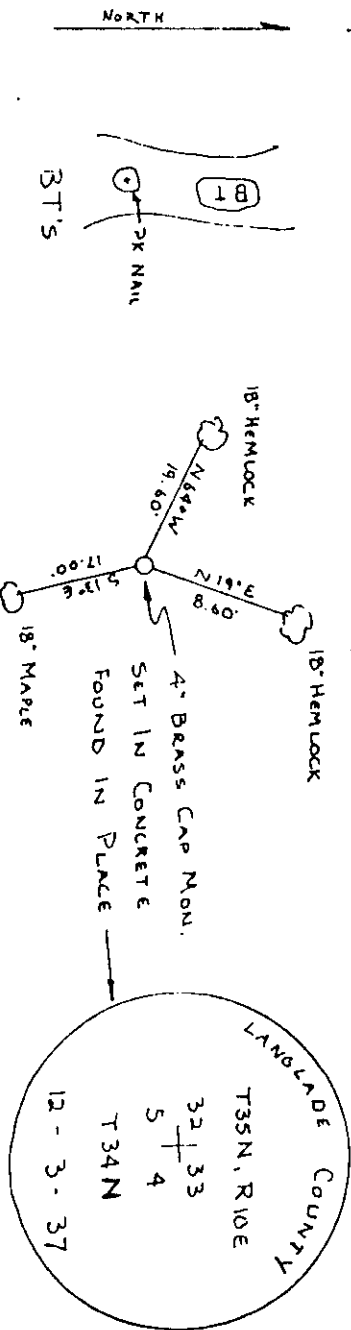
Description of corner evidence found:

FOUND A 4" BRASS CAP MONUMENT  
 SET IN CONCRETE



*W. William F. Kelly*

Description of monument and accessories I established to perpetuate the original location of this corner.



Dated at ECHO, Wis., this 26th day of DEC, 1980.

Signature William F. Kelly Title COUNTY SURVEYOR Registration No. 1098  
 (County Surveyor, Registered Land Surveyor, or other duly authorized official)

Office of Register of Deeds, County of LANGLADE, I hereby certify that the within instrument was filed in this office for record on the 26th day of DEC, 1980 at 11 o'clock AM.

(Register of Deeds)

By: \_\_\_\_\_ Deputy

# U.S. PUBLIC LAND SURVEY MONUMENT RECORD

(Prepared and as required by S. A-E 7.08 WI Administrative Code)

The NORTHWEST corner of Section 4, T. 34 N., R. 10 E., Langlade County, WI

Corner was: (check all that apply)

- Restored through acceptance of an obliterated evidence location.
- Restored through acceptance of a found perpetuated location, *from ties*.
- Determined to be lost and re-established through proportionate methods.  
(Show bearings and distances to PLSS corners used for proportioning.)
- Restored/recovered/reestablished in a location that differs from a previously established position. (Show difference in plan view below.)
- Check here if additional information is shown on the reverse side of this form.

351032 0000

Describe record evidence, recovered physical evidence, occupational evidence, testimonial evidence and all other evidence considered in the recovery/restoration of the corner.

The original corner was established in 1859 by Hiram C. Fellows. Original bearing trees: sugar, 7", N47°W, 6 links; aspen, 9", N10°E, 28 links; aspen, 14", S32°E, 23 links, and an aspen, 12", S51°W, 17links. In 1937, D. A. Hintz retraced the original government survey and found: "section lines blazed N-S and E-W. Found part of old scribed stake and BT by unknown surveyor: hemlock stump, 12", N82°W, 35.1 lks. Made new BT's: maple, 18", N80-1/2°E, 44 links (29.04'); maple, 12", S27°W, 19.9 links (13.13'); hemlock, 10", N67°W, 49.2 links (32.47') and a new BO: cross on top of grey rock, N01°E, 25.6 links (16.9'). In 1980, former surveyor Kelly "found a 4" brass cap monument set in concrete" and marked 3 BT's. 10/13/98 D. Tlusty, D. Williams. Found 4" iron pipe with brass cap and all four 1937 bearing objects. The found monument location doesn't work with 1937 record ties. I re-set the monument using the 1937 ties.

Physical description of the monument set:

For the corner, I re-set the 1937 monument, a 4" pipe with brass cap, then measured new ties as shown below.

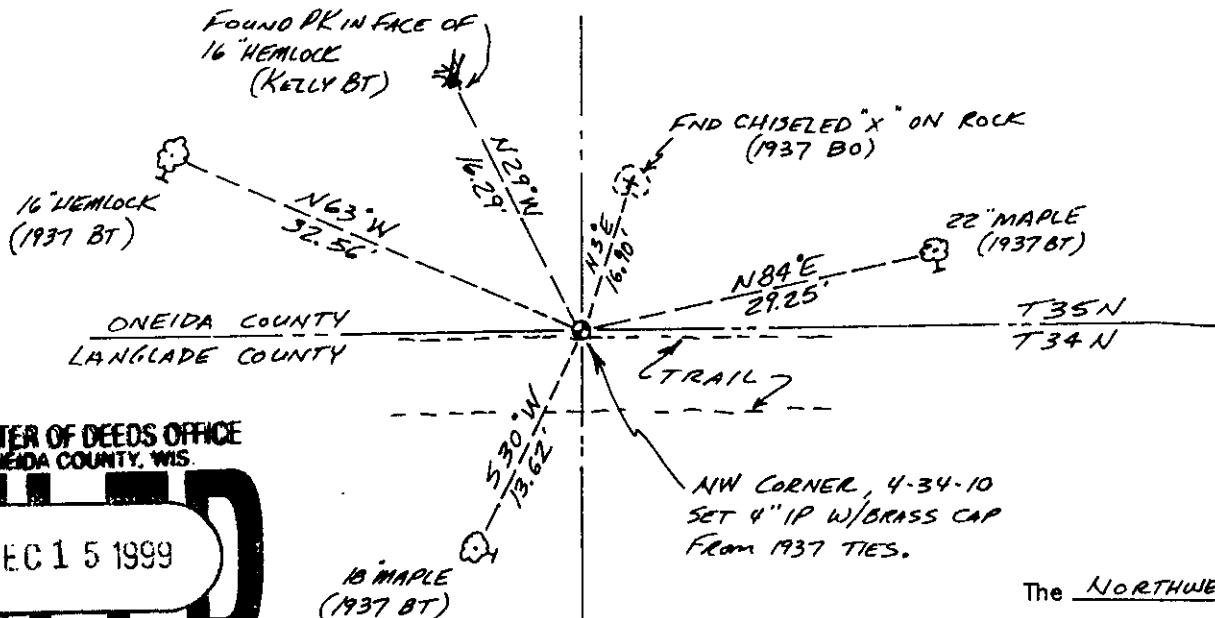
Describe the accessories used to perpetuate the location of the corner. Include a plan view drawing and indicate accessories found/set. Describe measuring point on bearing trees. Show any topographic features that would aid in future recovery of the corner.

☉ = set aluminum nail (v) in low blaze on side of tree shown

FB 16-48

Bearings magnetic with hand compass

Monument as re-set is S61°E, 11.9' from "found" location. It appears that the monument may have been bulldozed out at one time (it is on the north edge of east-west trail) and someone re-set it without using the 1937 ties, and then Kelly didn't check the 1937 ties either, but used the monument as found.

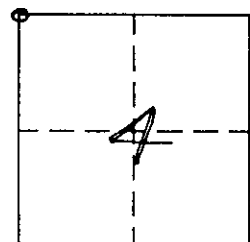


REGISTER OF DEEDS OFFICE  
ONEIDA COUNTY, WIS.  
**FILED**  
DEC 15 1999  
At \_\_\_\_\_ O'clock \_\_\_\_\_ M  
**THOMAS H. LEIGHTON**  
REGISTER OF DEEDS

SURVEYORS SEAL



The NORTHWEST corner of Section 4, T. 34 N., R. 10 E., Langlade County, WI



○ = Location of corner

DAVID E. TLUSTY  
LANGLAD COUNTY SURVEYOR, certify that the corner location shown on this record was determined by me or under my direction and control and that this U.S. Public Land Survey Monument Record is correct and complete to the best of my knowledge and belief.

*David E. Tlusty*  
Signature Date 6/15/99

351032 0000

INDEX No.

34-10  
2-9  
A-9