

State of Wisconsin }  
 County of } ss.

I, Raymond A. Bellamy, do hereby certify that on the 12 day of August, 1927, I found evidence of the original corner of the Section 33 Township 34 N., Range 4 E., Fourth Principal Meridian, as described hereon; and that from this evidence I established a new monument and accessories as described hereon to perpetuate the original location of this corner.

Resident witnesses:

CERTIFIED LAND CORNER RESTORATION

History of original corner establishment:

34-70  
 COPY FROM  
 Langlade City

Index No. A-13  
2-13

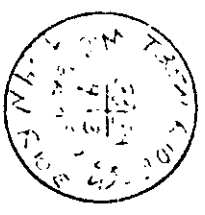
35-10

Description of corner evidence found:

2 1/2" IRON PIPE WITH IRONS UP NW COR. 45.7 LKS EAST  
6" IRON BOLT IN TOWN

Description of monument and accessories I established to perpetuate the original location of this corner.

2" IRON PIPE WITH IRONS UP NW COR. 45.7 LKS EAST  
6" IRON BOLT IN TOWN  
NEW B.T.S. TO N.E. COR.  
HARD MAPLE 6" DIAMETER 32 LKS  
" " 4" 3-5 SE 24.6 LKS



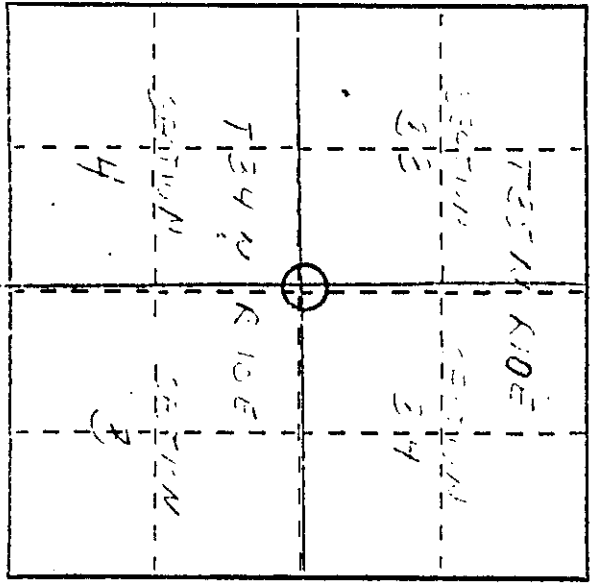
Dated at Antigo, Wis., this 12 day of August, 1927

Signature Raymond A. Bellamy Title Reg. Land Surveyor Registration No. 5655  
 (County Surveyor, Registered Land Surveyor, or other duly authorized official)

Office of Register of Deeds, County of Langlade, I hereby certify that the within instrument was filed in this office for record on the 12 day of August, 1927 at 10 o'clock A. M.

(Register of Deeds)

By Raymond A. Bellamy Deputy



○ = Corner monument restored.

# U.S. PUBLIC LAND SURVEY MONUMENT RECORD

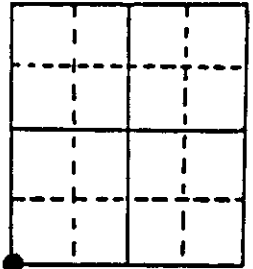
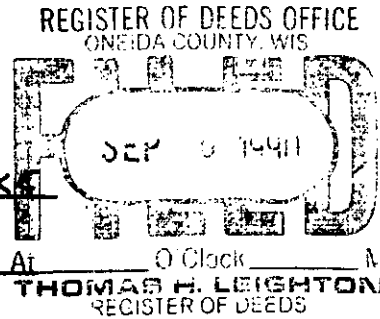
Note: This form is intended and designed to fulfill all requirements of Wisconsin Administrative Code, Chapter A-E 7.08 U.S. Public Land Survey Monument Record (3) (a) (b) (c) (d) (e) (f) (g) (h) (i). An additional sheet may be added if necessary to conform with said requirements.

(a) Corner location: Township 35 North

Range 10 East/West

Town/City/Village E. ENTERPRISE W. SCHOEPK

County ONEIDA



Section 34

(b) (f) (g) (h) Description of monument found at this corner and if it was accepted, state all evidence (material, testimonial, occupational, plats, records, other monuments) used as a basis for accepting. If not accepted or if nothing was found, state evidence used as basis for establishing location. If reestablished through lost corner proportionate methods, indicate all monuments, distances and directions used to establish. Indicate type of monument found or set and sign post.

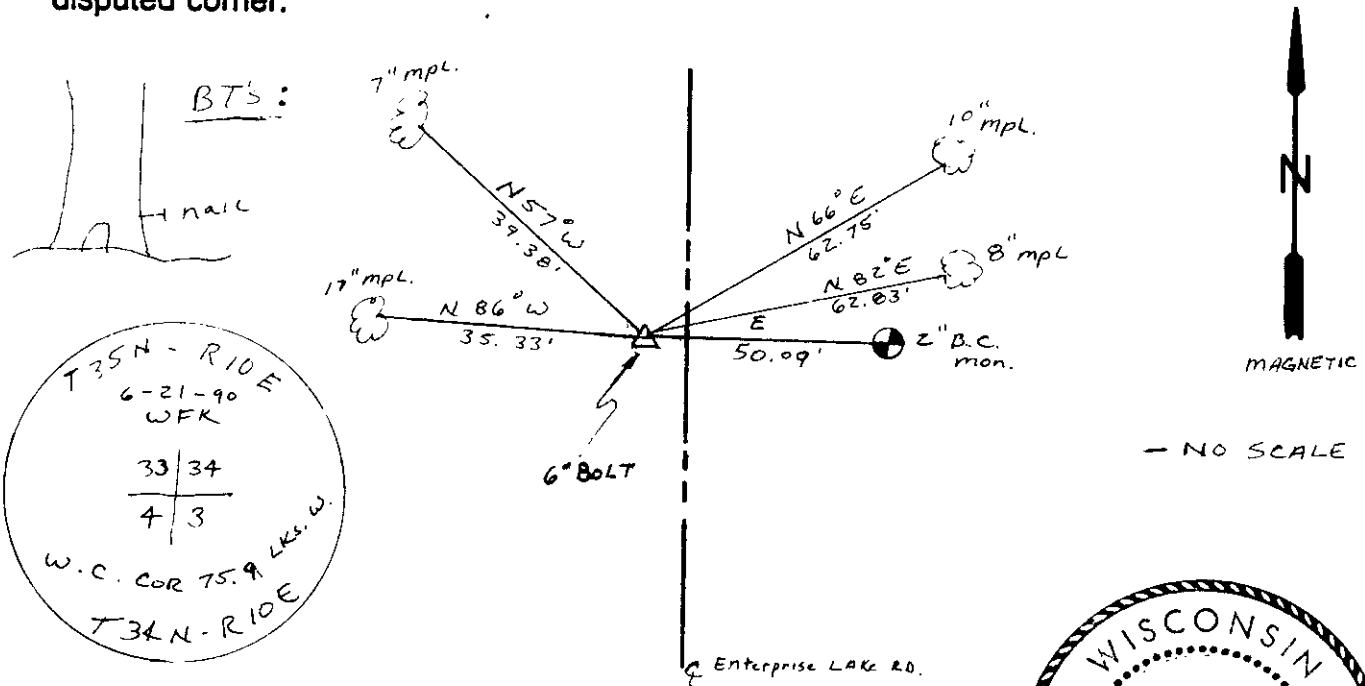
1859 - H.C. FELLOWS ESTABLISHED ORIGINAL CORNER

1930 - CORNER RESET ON CCC PROJECT

1973 - R. HALLISY FOUND OLD BT STUMP - MAPLE S 82° W, 40.3 LKS. LOT STAKE 300 FT. WEST. SET 6" BOLT IN ROAD & 2" BRASS CAP EAST

1990 - FOUND 6" BOLT IN ROAD & WITNESS PIPE WITH 2" BRASS CAP MADE 4 N BT'S. SET WHITE POST NEXT TO W.C.

(c) (d) (e) Plan view of corner with ties to at least 4 witness monuments. If in disagreement with previously established corner, show the distances between the two corners and also indicate the ties to the disputed corner.



(i) I, WILLIAM F. KELLY  
(type or print name) certify that the corner location on this record was determined by me or under my direction and control and that this U.S. Public Land Survey Monument Record is correct and complete to the best of my knowledge and belief.



William F. Kelly                      8/28/90  
Signature    Date

Stamp 3510330000

Index No. 2-13