

U.S. PUBLIC LAND SURVEY MONUMENT RECORD

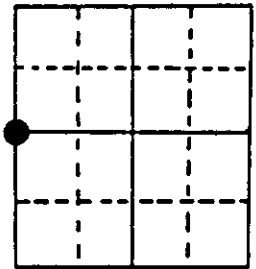
Note: This form is intended and designed to fulfill all requirements of Wisconsin Administrative Code, Chapter A-E 7.08 U.S. Public Land Survey Monument Record (3) (a) (b) (c) (d) (e) (f) (g) (h) (i). An additional sheet may be added if necessary to conform with said requirements.

(a) Corner location: Township 35 North

Range 10 East/West

Town/City/Village E. ENTERPRISE W. SCHOEPEKE

County ONEIDA



Section 34

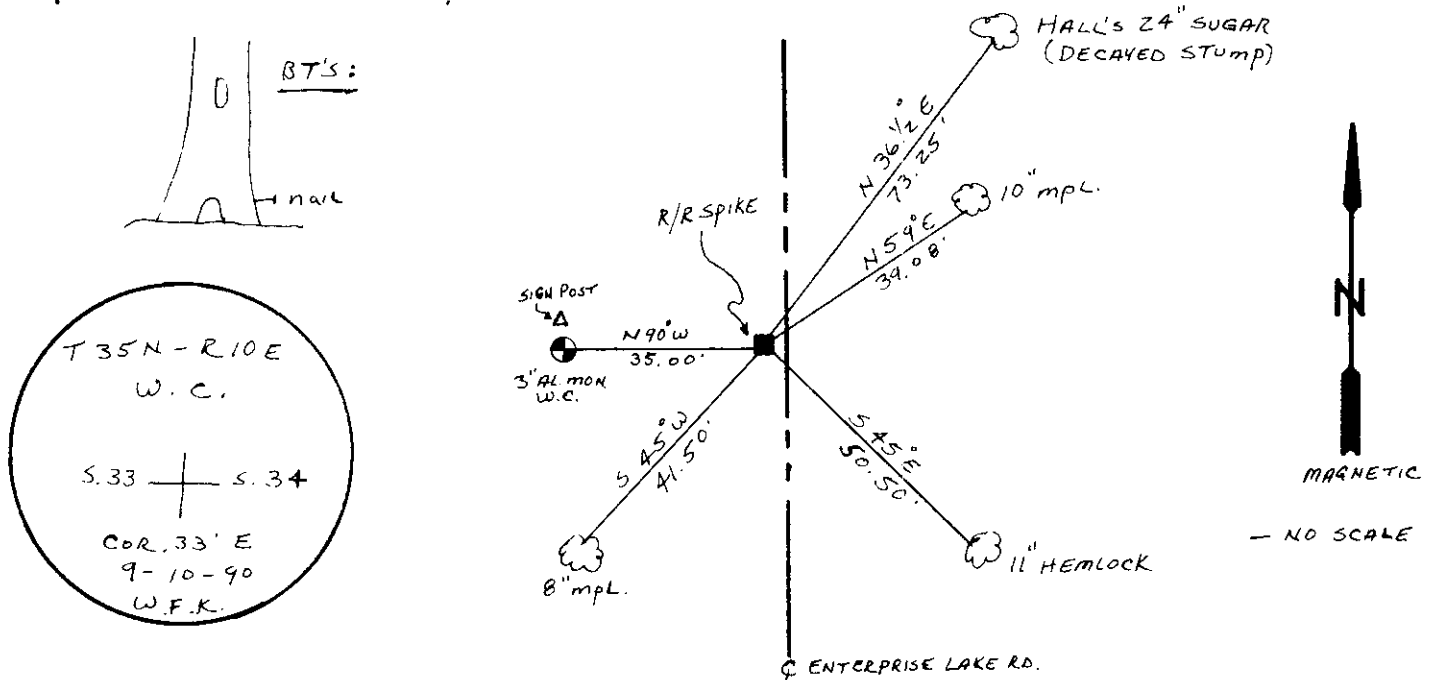
(b) (f) (g) (h) Description of monument found at this corner and if it was accepted, state all evidence (material, testimonial, occupational, plats, records, other monuments) used as a basis for accepting. If not accepted or if nothing was found, state evidence used as basis for establishing location. If reestablished through lost corner proportionate methods, indicate all monuments, distances and directions used to establish. Indicate type of monument found or set and sign post.

1865 - JAMES NOWLIN ESTABLISHED ORIGINAL CORNER.

1932 - H.C. HALL FOUND VAUGHAN'S ORIGINAL BT'S. HE MADE 2 N.B.T'S:
 & DROVE TEMP. POST. BY RECORD DISTANCES (20" BASSWOOD, S 70° W, 37.95'
 24" SUGAR, N 36 1/2° E, 73.25'

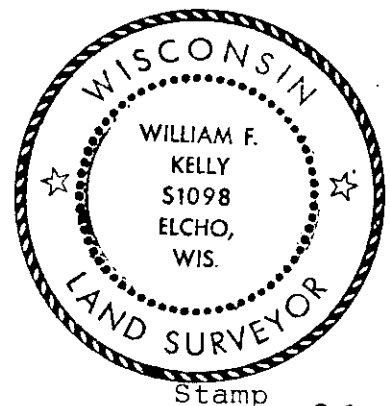
1990 - I FOUND HALL'S ORIGINAL SUGAR BT. WHICH IS NOW A DECAYED STUMP. I RESET CORNER WITH R/R SPIKE FROM HALL'S BT. RECORD DISTANCE & DIRECTION. I SET 3" ALUMINUM COUNTY MONUMENT 35 FEET, N 90° W OF CORNER & WHITE SIGN POST N. OF MONUMENT, MADE 4 N.B.T'S

(c) (d) (e) Plan view of corner with ties to at least 4 witness monuments. If in disagreement with previously established corner, show the distances between the two corners and also indicate the ties to the disputed corner.



(i) I, WILLIAM F. KELLY
 (type or print name) certify that the corner location on this record was determined by me or under my direction and control and that this U.S. Public Land Survey Monument Record is correct and complete to the best of my knowledge and belief.

William F. Kelly 10-30-90
 Signature Date



Stamp

3510332000

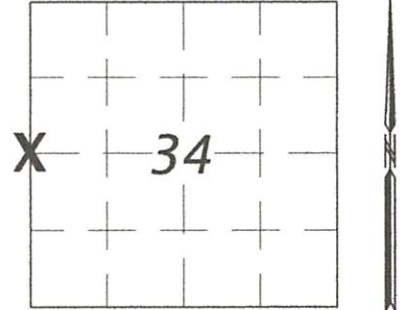
Index No. X-13

U.S. PUBLIC LAND SURVEY MONUMENT RECORD

NOTE: This form is intended and designed to fulfill all requirements of Wisconsin Administrative Code, Chapter A-E 7.08 U.S. Public Land Survey Monument Record (3)(a)(b)(c)(d)(e)(f)(h)(i). An additional sheet may be added if necessary to conform with said requirements.

SECTION 34
 TOWNSHIP 35 NORTH
 RANGE 10 EAST
 TOWN OF ENTERPRISE
 CORNER ID # 3510332000

(a) CORNER LOCATION AND MONUMENT: PK nail found at the 1/4 Corner between Sections 33 and 34
 COUNTY COORDINATE: N 105700.90 E 308826.55 usf
 WISCRS (Oneida County) Datum: NAD83 (2011)
 DATE OF SURVEY: 5/29/18
 SURVEY PARTY: T Sommer



BASIS FOR MONUMENT LOCATION:

(b)(f)(g)(h) This is a perpetuation of a previous USPLS Monument Record by William F. Kelly, RLS dated 10-30-90 and filed in the office of the Oneida County Register of Deeds. A complete history of the corner can be found on the previous monument record. I accept the previous location as a true and faithful perpetuation or reestablishment of the original corner location and further perpetuate it as follows:

5/29/2018 - I, Ted Sommer, found a PK nail at the corner location, approximately 3 feet west of the centerline of the paved surface of Enterprise Lake Road. Kelly's accessories were found in substantial agreement with his previous record, but were updated as shown below.

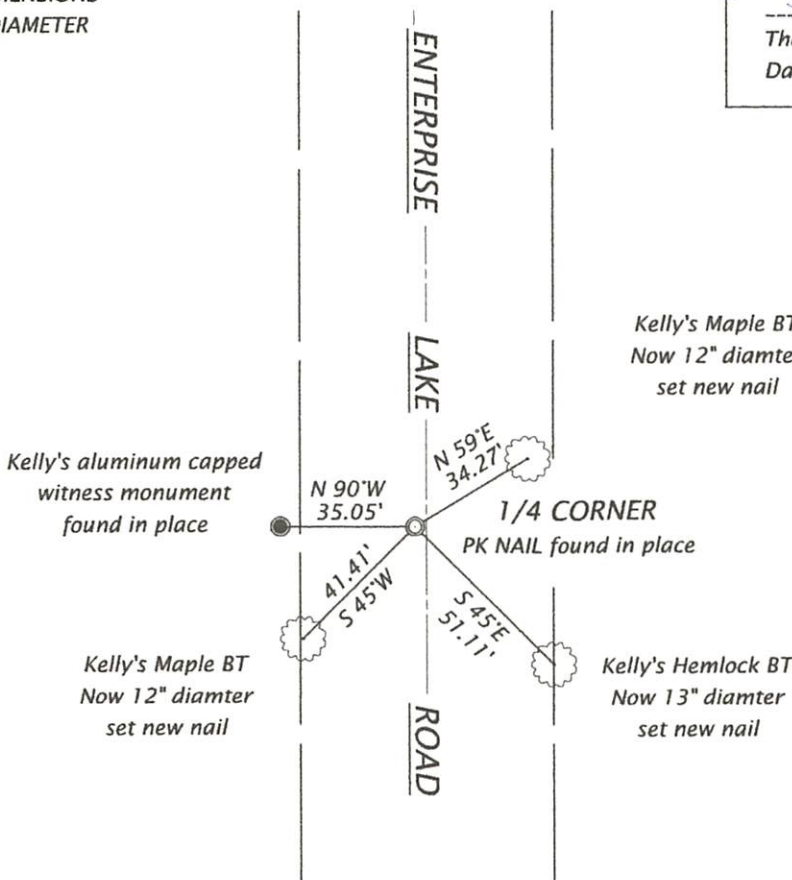
The coordinates shown were derived from averaged direct RTN GPS observations at markedly different times and comparison to a previously GPS determined published value. The previous published coordinate from 2001 indicates a RR spike at the corner. However the PK nail checks with the existing accessories as shown:



(i) I, Theodore G. Sommer, Professional Land Surveyor No. S-2964 hereby certify that the corner location on this record was determined by me or under my direction and control, and that this U.S. Public Land Survey Monument Record is correct and complete to the best of my knowledge and belief.

TIE SKETCH: (c)(d)(e) Show minimum of four horizontal tie distances to fixed witness monuments. Describe all monuments found or set.

SKETCH NOT TO SCALE
 MONUMENT DIMENSIONS
 ARE OUTSIDE DIAMETER



Theodore G. Sommer - PLS 2964
 Dated 1/24/2020

BEARINGS MAGNETIC



REGISTER OF DEEDS OFFICE
 ONEIDA COUNTY
 FILED

APR 21 2022

KYLE J. FRANSON
 REGISTER OF DEEDS