

U.S. PUBLIC LAND SURVEY MONUMENT RECORD

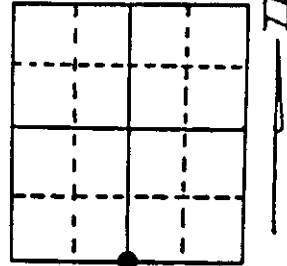
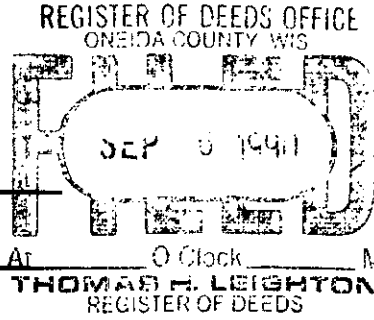
Note: This form is intended and designed to fulfill all requirements of Wisconsin Administrative Code, Chapter A-E 7.08 U.S. Public Land Survey Monument Record (3) (a) (b) (c) (d) (e) (f) (g) (h) (i). An additional sheet may be added if necessary to conform with said requirements.

(a) Corner location: Township 35 North

Range 10 East/West

Town/City/Village E. ENTERPRISE W. SCHOEPEKE

County ONEIDA



Section 34

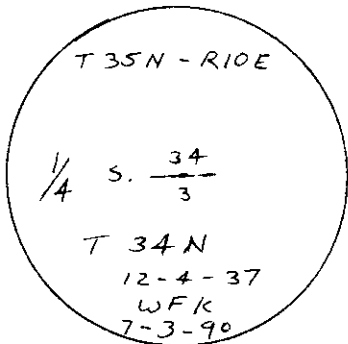
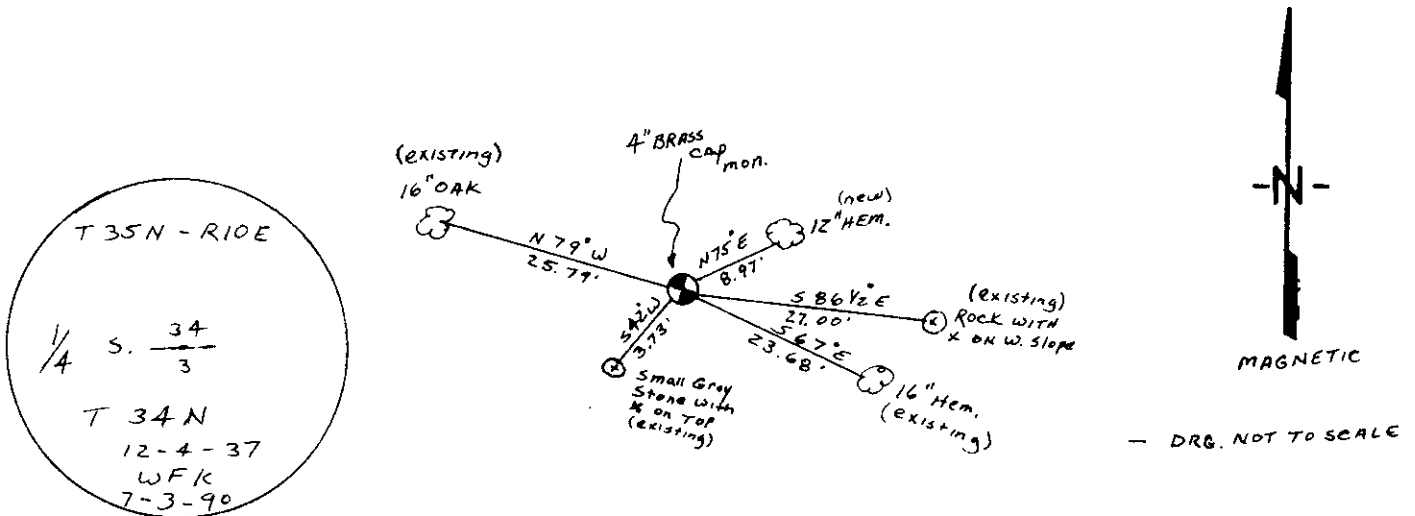
(b) (f) (g) (h) Description of monument found at this corner and if it was accepted, state all evidence (material, testimonial, occupational, plats, records, other monuments) used as a basis for accepting. If not accepted or if nothing was found, state evidence used as basis for establishing location. If reestablished through lost corner proportionate methods, indicate all monuments, distances and directions used to establish. Indicate type of monument found or set and sign post.

JUNE 1859, H FELLOWS ESTABLISHED ORIGINAL CORNER.

1937, D.A. HINTZ RESURVEYED SECTION 34 & FOUND ORIGINAL PINE B.T.; MADE NEW B.T.'s: 10" Hem, S 69° E, 35.2 IKS, 18" OAK, N 83 1/4° W, 39.5 IKS, CROSS ON W. SLOPE OF Large Rock, S 88 1/2° E, 41 IKS, " " TOP OF GREYSTONE, S 40° W, 5.8 IKS.

JULY, 1990, I FOUND 4" BRASS CAP MONUMENT & HINTZ'S B.T.'s

(c) (d) (e) Plan view of corner with ties to at least 4 witness monuments. If in disagreement with previously established corner, show the distances between the two corners and also indicate the ties to the disputed corner.



(i) WILLIAM F. KELLY
 (type or print name) certify that the corner location on this record was determined by me or under my direction and control and that this U.S. Public Land Survey Monument Record is correct and complete to the best of my knowledge and belief.



William F. Kelly 8/28/90
 Signature Date

Stamp
 3 510340026

Index No. 2-15

U.S. PUBLIC LAND SURVEY MONUMENT RECORD

(Prepared and as required by S. A-E 7.08 WI Administrative Code)

The NORTH QUARTER corner of Section 3, T. 34 N., R. 10 E., Langlade County, WI

Corner was: (check all that apply)

- Restored through acceptance of an obliterated evidence location.
- Restored through acceptance of a found perpetuated location.
- Determined to be lost and re-established through proportionate methods.
(Show bearings and distances to PLSS corners used for proportioning.)
- Restored/recovered/reestablished in a location that differs from a previously established position. (Show difference in plan view below.)
- Check here if additional information is shown on the reverse side of this form.

351034 0020

Describe record evidence, recovered physical evidence, occupational evidence, testimonial evidence and all other evidence considered in the recovery/restoration of the corner.

The original corner was established in 1859 by Hiram C. Fellows. Original bearing trees: pine, 10", S20°W, 10 lks., and a birch, 8", N5°E, 10 lks. 1937 D. A. Hintz retraced original govt. survey and found the orig. pine 10" S20°W 10 lks., set new BT's: hemlock, 10", S69°E, 35.2 lks. and a red oak, 10", N83-1/4°W, 39.5 lks. and made chiseled cross's: on the west slope of large rock S88-1/2°E, 41 lks., and on the top of a grey stone S40°W, 5.8 lks. July 1990 William F. Kelly found 4" brass cap monument and all of Hintz's BT's and made one new BT: hemlock, 12", N75°E, 8.97'. 10/15/98 D. Tlusty, D. Williams found 4" monument in good condition on high ground, surrounded by open bog to the east, south and west.

Physical description of the monument set:

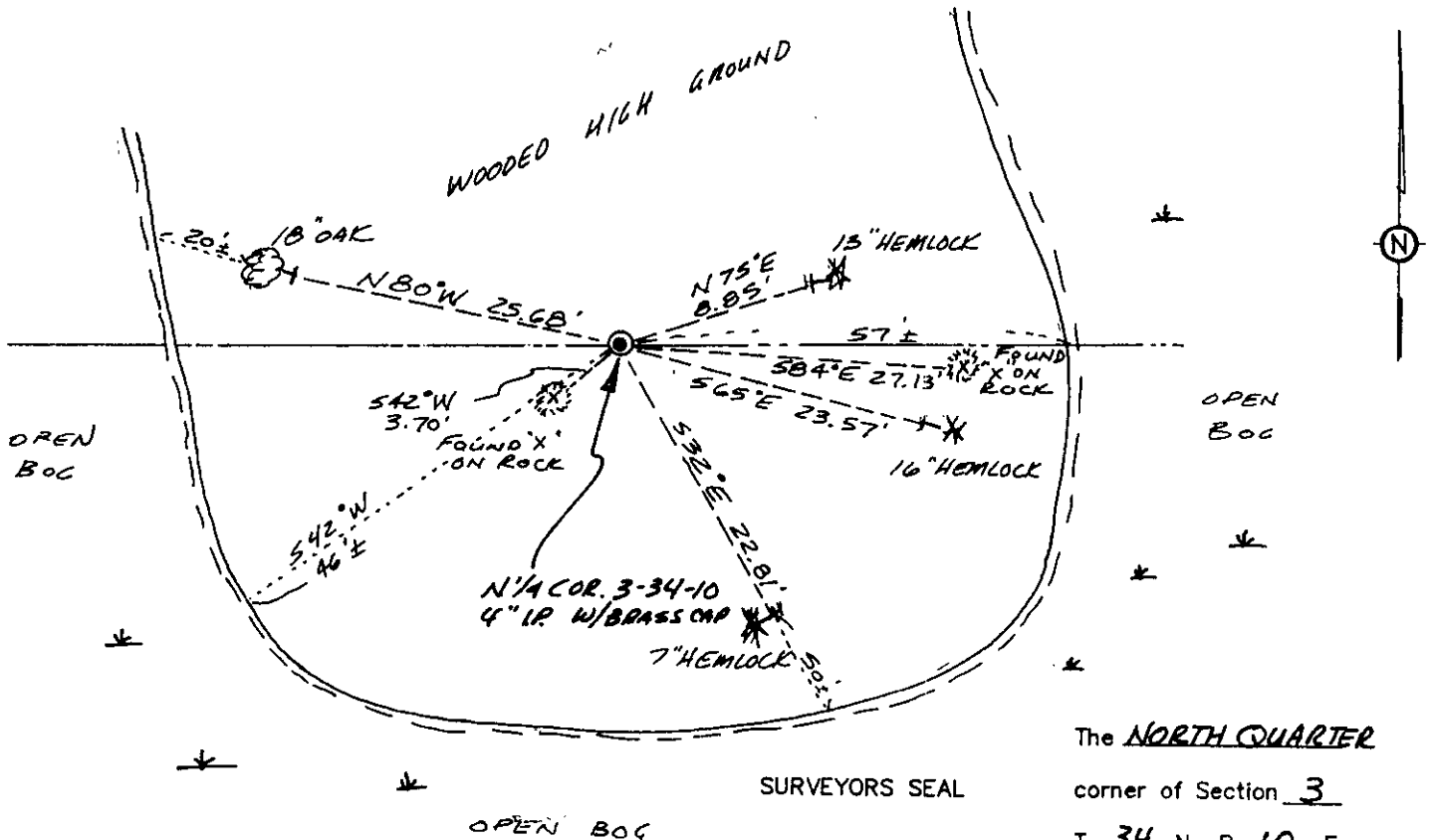
Set white vinyl sign post 0.4' north of existing monument.

Describe the accessories used to perpetuate the location of the corner. Include a plan view drawing and indicate accessories found/set. Describe measuring point on bearing trees. Show any topographic features that would aid in future recovery of the corner.

Bearings magnetic with hand compass.

Notes FB 16-58

T = PK found or set in side of tree shown

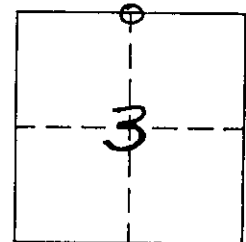


SURVEYORS SEAL

The NORTH QUARTER

corner of Section 3

T. 34 N., R. 10 E.
Langlade County, WI



O = Location of corner

3510340020

DAVID E. TLUSTY
LANGLADE COUNTY SURVEYOR certify that the corner location shown on this record was determined by me or under my direction and control and that this U.S. Public Land Survey Monument Record is correct and complete to the best of my knowledge and belief.



David E. Tlusty 2/6/2001
Signature Date

INDEX No. 35-10 34-10
Z-15
A-15