

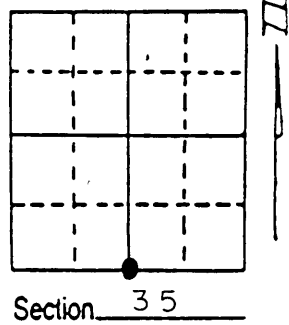
U.S. PUBLIC LAND SURVEY MONUMENT RECORD

Note: This form is intended and designed to fulfill all requirements of Wisconsin Administrative Code, Chapter A-E 7.08 U.S. Public Land Survey Monument Record (3) (a) (b) (c) (d) (e) (f) (g) (h) (i). An additional sheet may be added if necessary to conform with said requirements.

(a) Corner location: Township 35 North
 Range 10 East/West

Town/City/Village Enterprise

County Oneida



(b) (f) (g) (h) Description of monument found at this corner and if it was accepted, state all evidence (material, testimonial, occupational, plats, records, other monuments) used as a basis for accepting. If not accepted or if nothing was found, state evidence used as basis for establishing location. If reestablished through lost corner proportionate methods, indicate all monuments, distances and directions used to establish. Indicate type of monument found or set and sign post.

1859 - H.C. Fellows ran West between Sec. 2 & 35 and set 1/4 Sec. post at 40.00 chains. Bts., sugar 12, S 35 W, 50 links - sugar 10, N10 E, 12 links

1938 - D. A. Hintz had found evidence of original corner and set stamped county monument dated 5-27-38 and pine stump S64E, 65 lks.

1998 - Dave Tlusty found county monument in mound of stones, brass cap being partially broken 10' west of center of a logging road and Hintz's pine stump.

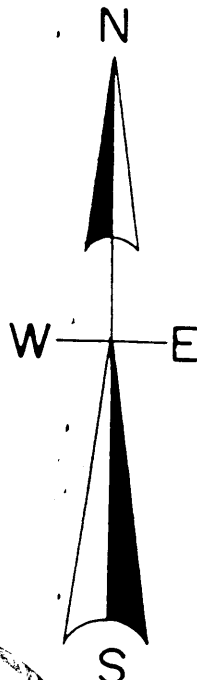
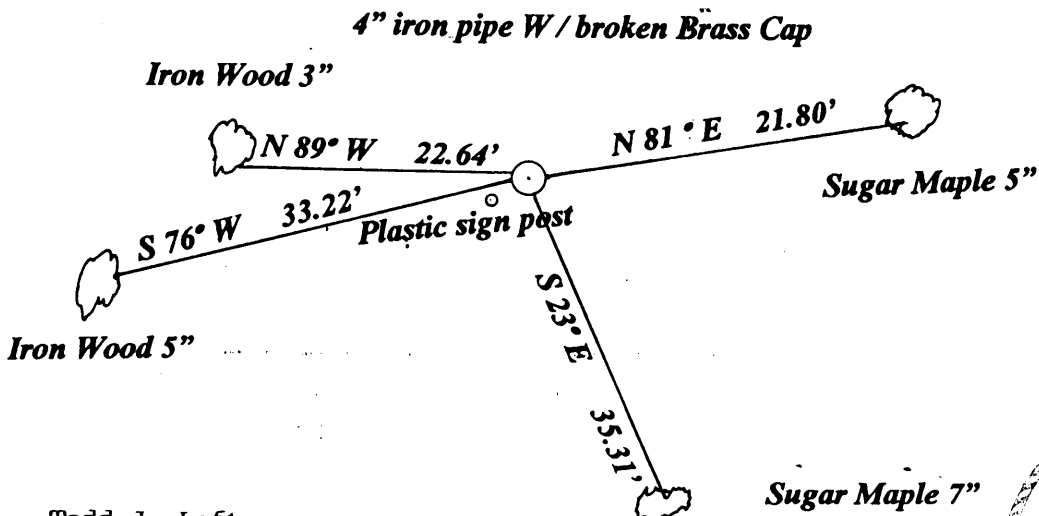
2004 - Todd Loftus found corner in same condition as Dave Tlusty and made 4 Bts., set plastic sign post.

(c) (d) (e) Plan view of corner with ties to at least 4 witness monuments. If in disagreement with previously established corner, show the distances between the two corners and also indicate the ties to the disputed corner.

Distances measured to spike in tree.
 Bearings taken by Hand Compass.
 No scale.

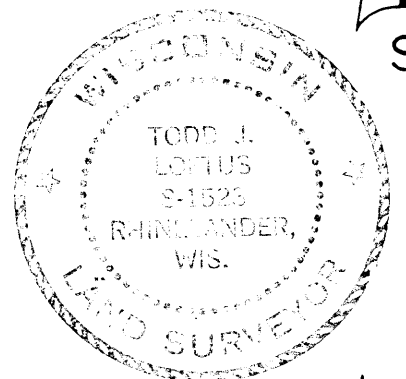
CTY N 102983.092

CTY E 316914.997



(i) I, Todd J. Loftus
 (type or print name) certify that the corner location on this record was determined by me or under my direction and control and that this U.S. Public Land Survey Monument Record is correct and complete to the best of my knowledge and belief.

Todd J. Loftus Signature March 11, 2005 Date



Index No. Z 19

Stamp **3510350020**