

U.S. PUBLIC LAND SURVEY MONUMENT RECORD

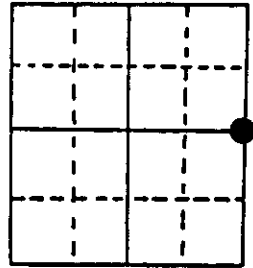
Note: This form is intended and designed to fulfill all requirements of Wisconsin Administrative Code, Chapter A-E 7.08 U.S. Public Land Survey Monument Record (3) (a) (b) (c) (d) (e) (f) (g) (h) (i). An additional sheet may be added if necessary to conform with said requirements.

(a) Corner location: Township 35 North

Range 10 East/West

Town/City/Village E. ENTERPRISE W. SCHOEPEKE

County D NEIDA



Section 35

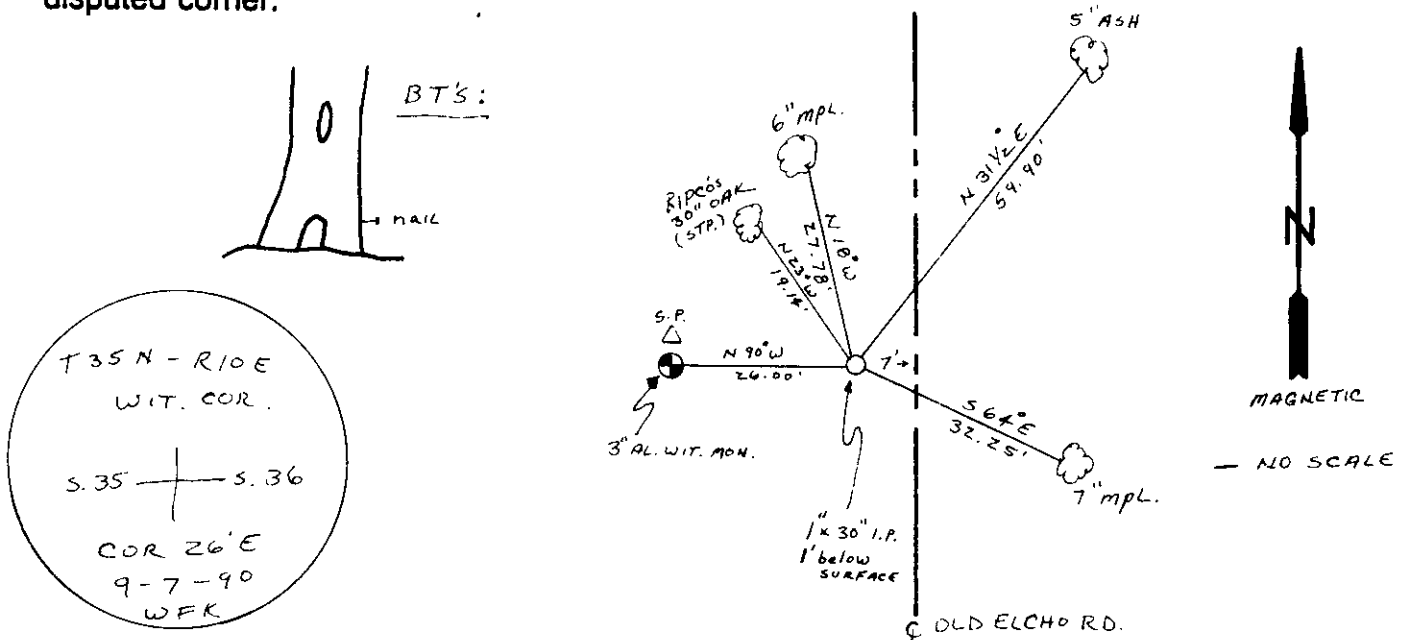
(b) (f) (g) (h) Description of monument found at this corner and if it was accepted, state all evidence (material, testimonial, occupational, plats, records, other monuments) used as a basis for accepting. If not accepted or if nothing was found, state evidence used as basis for establishing location. If reestablished through lost corner proportionate methods, indicate all monuments, distances and directions used to establish. Indicate type of monument found or set and sign post.

1865 - JAMES NOWLIN ESTABLISHED ORIGINAL CORNER

1977 - Wm. BANDOW MAKES REFERENCE TO RIPCO'S BT: {30" OAK, N23°W, 29 lks} RESET CORNER

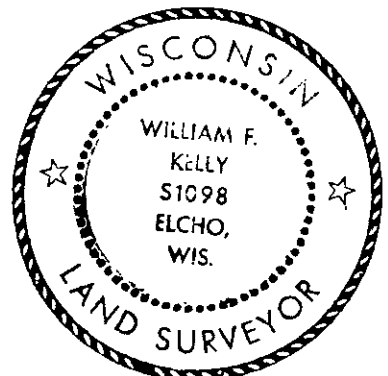
1990 - I FOUND RIPCO'S OAK BT, NOW A STUMP, BUT CAN STILL READ THE SCRIBING. COULD NOT FIND CORNER, I BELIEVE IT HAD BEEN GRADED OUT. RESET CORNER WITH 1" x 30" IRON PIPE, 1 FOOT BELOW SURFACE OF ROAD, USING RIPCO'S OAK BT. SET 3" ALUMINUM WITNESS MONUMENT N90°W, 26 FEET FROM CORNER & SET WHITE SIGN POST N. OF W.C., MADE 3 N.P.T.'S

(c) (d) (e) Plan view of corner with ties to at least 4 witness monuments. If in disagreement with previously established corner, show the distances between the two corners and also indicate the ties to the disputed corner.



(i) I, WILLIAM F. KELLY
 (type or print name) certify that the corner location on this record was determined by me or under my direction and control and that this U.S. Public Land Survey Monument Record is correct and complete to the best of my knowledge and belief.

William F. Kelly 10-30-90
 Signature Date



Index No. X-21