

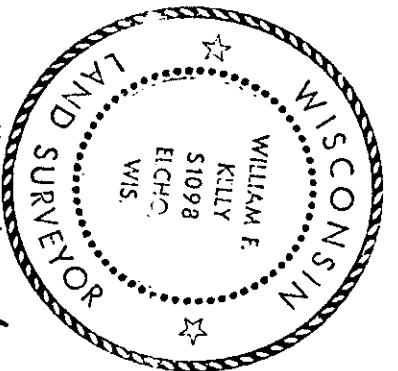
State of Wisconsin }
 County of LANGLADE } ss.

I WILLIAM F. KELLY do hereby certify that on the 24TH day of NOVEMBER, 1975, I found evidence of the N 1/4 corner of SECTION 36 T 1 Township 34 North, Range 10 E, Fourth Principal Meridian, as described hereon; and that from this evidence I established a new monument and accessories as described hereon to perpetuate the original location of this corner.

Resident witnesses:

CERTIFIED LAND CORNER RESTORATION

History of original corner establishment:



Index No. 2-23

35-10

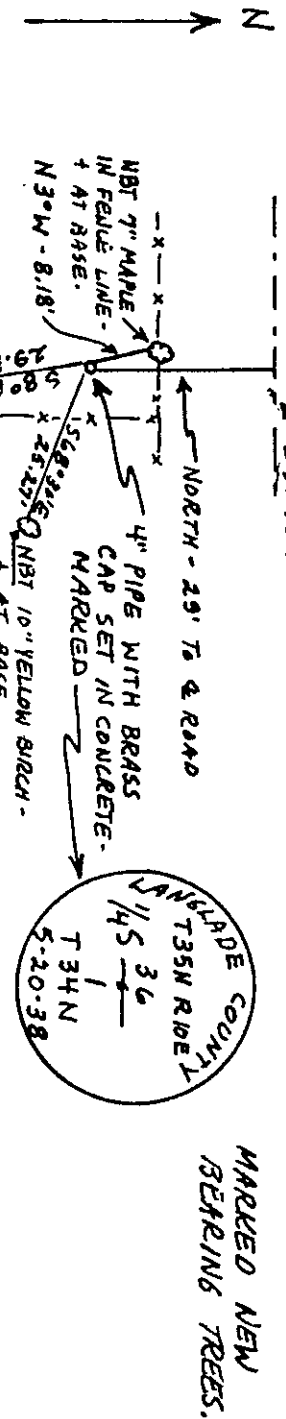
Copy from Langlade et al

3510360020

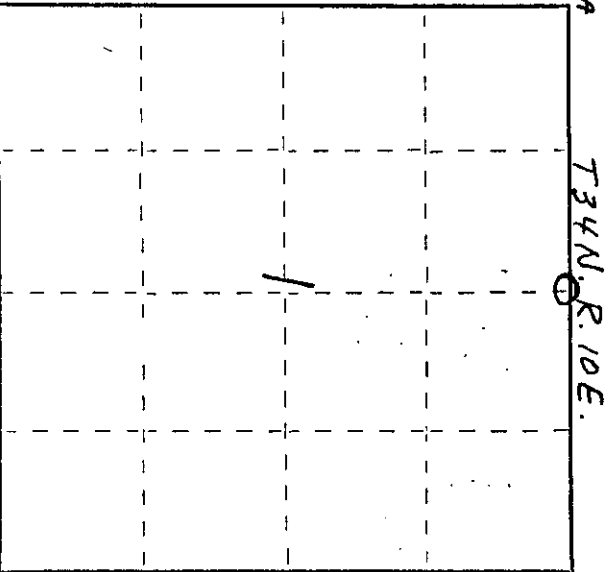
Description of corner evidence found:
LOCATED N 1/4 COR. SECT. 1, T. 34N.-R. 10E. - 4" PIPE WITH BRASS CAP SET IN CONCRETE.

William F. Kelly

Description of monument and accessories I established to perpetuate the original location of this corner.



MARKED NEW BEARING TREES.



○ = Corner monument restored.

Dated at ELCHO 24TH day of NOVEMBER, 1975.

Signature William F. Kelly Title REGISTERED LAND SURVEYOR Registration No. S 1098
 (County Surveyor, Register of Land Surveyors, or other duly authorized official)

Office of Register of Deeds, County of _____, I hereby certify that the within instrument was filed in this office for record on the _____ day of _____, 19____ at _____ o'clock _____ M.

(Register of Deeds)

By: _____ Deputy