

CERTIFIED LAND CORNER RESTORATION

Index No. **X-23**

State of Wisconsin

County of Oneida } ss.

I Phillip T. Hansen do hereby

certify that on the 5th day

of April, 1976, I found

evidence of the C 1/4

corner of Section 36

Township 35, North, Range

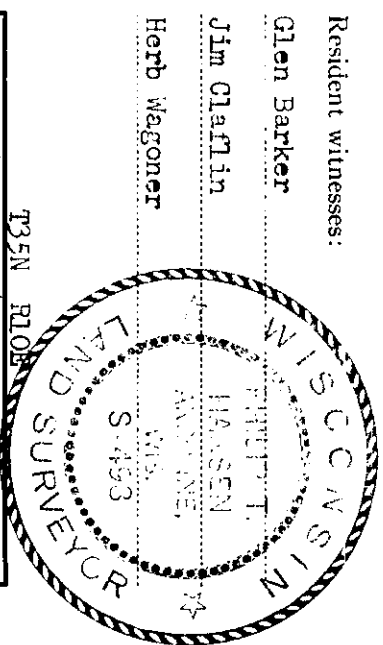
10 East, Fourth Principal Meridian,

as described hereon; and that from this evidence

I established a new monument and accessories

as described hereon to perpetuate the original

location of this corner.

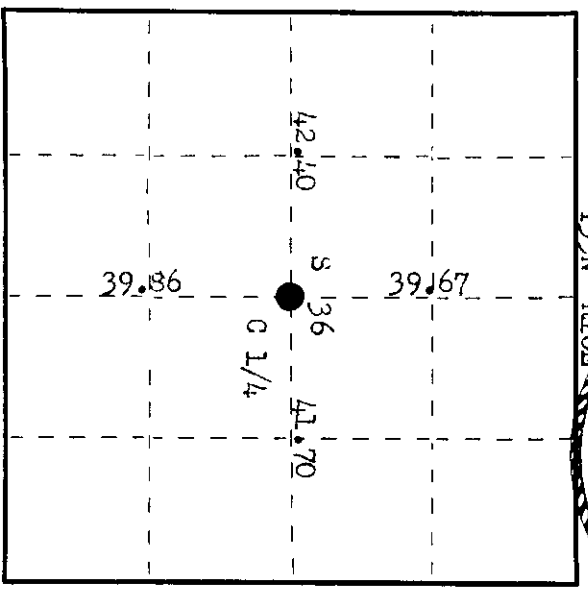


Resident witnesses:

Glen Barker

Jim Clafflin

Herb Wagoner



O = Corner monument restored.

History of original corner establishment: H.C. Lawrence, registered land surveyor, recovered an old C 1/4 corner of unknown origin in 1951, when he made a retracement survey. He ran the N-S 1/4 line and E-W 1/4 line of section 36, to establish his C 1/4 corner. Set a new wood post, but made no mention of any NBTs established.

Description of corner evidence found: Recovered 4" cedar post, squared and scribed C 1/4 S-36, C 1/4 S36. It had rotted off at the ground, but found the old joint well preserved.

Recovered OBTs - Maple 8" S 79° N 14.8 lks, scribed S36 BT.

Hemlock 12" S 37° E 24 lks, scribed C 1/4 BT.

Description of monument and accessories I established to perpetuate the original location of this corner.

Set a 2 1/2" iron pipe with brass cap projecting 3 1/2" above ground. Cap stamped.

Unable to set it lower because of large boulder.

Built a rock cairn (large) around monument.

NBT - Hemlock 10" N 16° E 53.6 lks, scribed 1/4 BT.

Propped old post on rock cairn.

Corner sets 2.34 chains east of CTH - "C".

Monument and BTs painted blue.

S498  
T35N R10E  
C 1/4 S 36  
CPI - 1976

Dated at Rhineland, Wis., this 6th day of July, 1976

Signature Phillip T. Hansen Title Registered Land Surveyor Registration No. S-498

(County Surveyor, Registered Land Surveyor, or other duly authorized official)

Office of Register of Deeds, County of Oneida, I hereby certify that the within

instrument was filed in this office for record on the 23rd day of July, 1976

at 10 o'clock A.M.

Dorice Schaefer  
(Register of Deeds)

By: \_\_\_\_\_ Deputy

3510362026