

CERTIFIED LAND CORNER RESTORATION

Index No. **E-25**

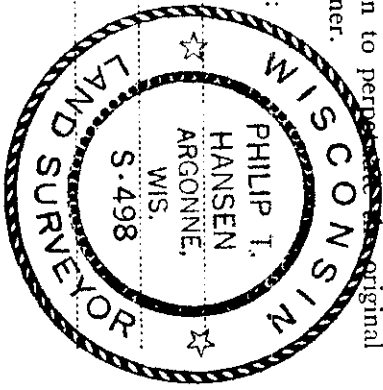
State of Wisconsin } ss.

County of Oneida

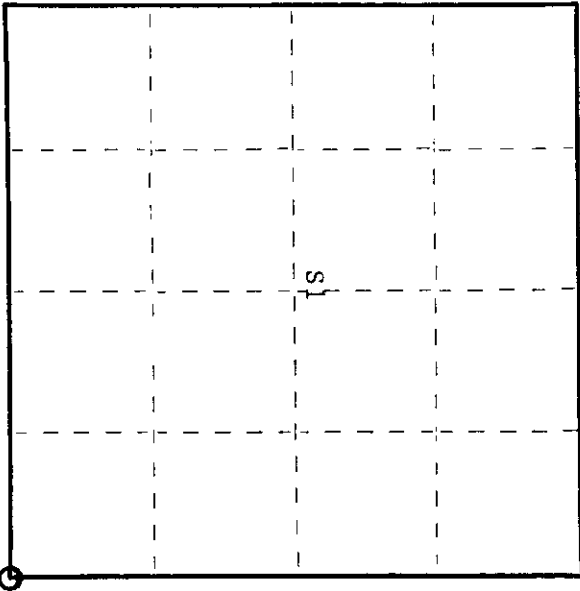
I Phillip T. Hansen, do hereby certify that on the 15th day of May, 1975, I found evidence of the Section Corner corner of S1-6, S12, S7 Township 35, North, Range 11 and 12 East Fourth Principal Meridian,

as described hereon; and that from this evidence I established a new monument and accessories as described hereon to perpetuate the original location of this corner.

Resident witnesses:



T35N, R11E



○ = Corner monument restored.

History of original corner establishment:

Original corner established by Hiram A. Fellows, Gov. Deputy Surveyor, in 1859, from which birch 10" bears S60W 14 links, sugar 6" bears N37°W 12 links, birch 10" bears N25°E 12 links.

Corner restored in 1957. Set iron pipe, buried in road at intersection of N-S and E-W highways by H.C. Lawrence, Registered Land Surveyor, during his retracement survey.

Description of corner evidence found:

Recovered iron pin buried in road at intersection of N-S and E-W highways. No BT's found.

Description of monument and accessories I established to perpetuate the original location of this corner. Set 2½" iron pipe with brass cap stamped as witness corner.

The witness corner bears N, 35 links from true corner.

NBT - Line pole N10°E 34.5 links #3511 - 1R1 R11E S1/S6 R12E
 Sign post (Pits) S40°E 57 links S12/S7
 Bearing and distance to true corner. CPI-1975
 W.C. 35 links

Dated at Rhineland, Wis., this 3rd day of June, 1975

Signature Phillip T. Hansen Title Registered Land Surveyor Registration No. S-498
 (County Surveyor, Registered Land Surveyor, or other duly authorized official)

Office of Register of Deeds, County of Oneida hereby certify that the within instrument was filed in this office for record on the 1st day of October, 1975 at 3:00 o'clock P. M.

Janice Bernage Fuchs
 (Register of Deeds)

By _____ Deputy

3511010000

U. S. PUBLIC LAND SURVEY MONUMENT RECORD

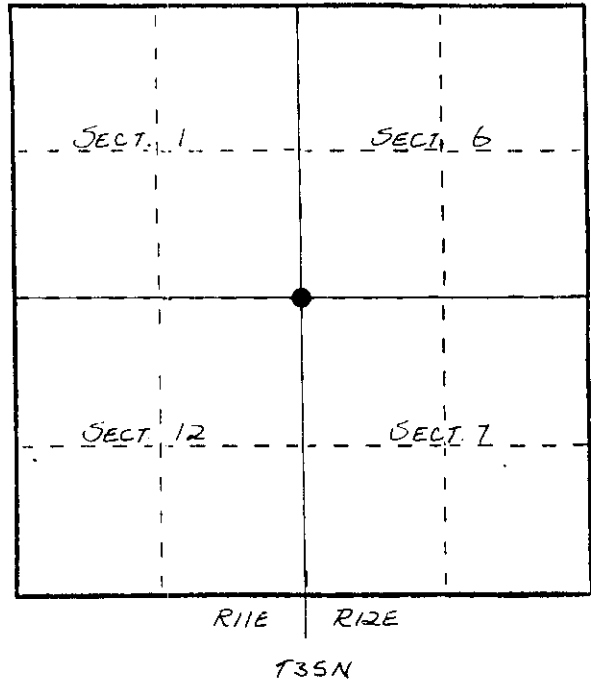
INSTRUCTIONS: This record shall show the location of the corner and shall include all of the following nine elements (a through i).

- (a) Identify the corner by reference to the U.S. public land survey system.
- = Corner monument restored.

ORIGINAL CORNER SET BY ALFRED MILLARD IN 1957.
 CORNER RE-ESTABLISHED BY H.C. LAWRENCE
 IN 1958. SET IRON PIN IN ROAD.

Compared with all record data and accepted as correct.

Robert H. Winat, Oneida Co. Surv.
 15 March 1984



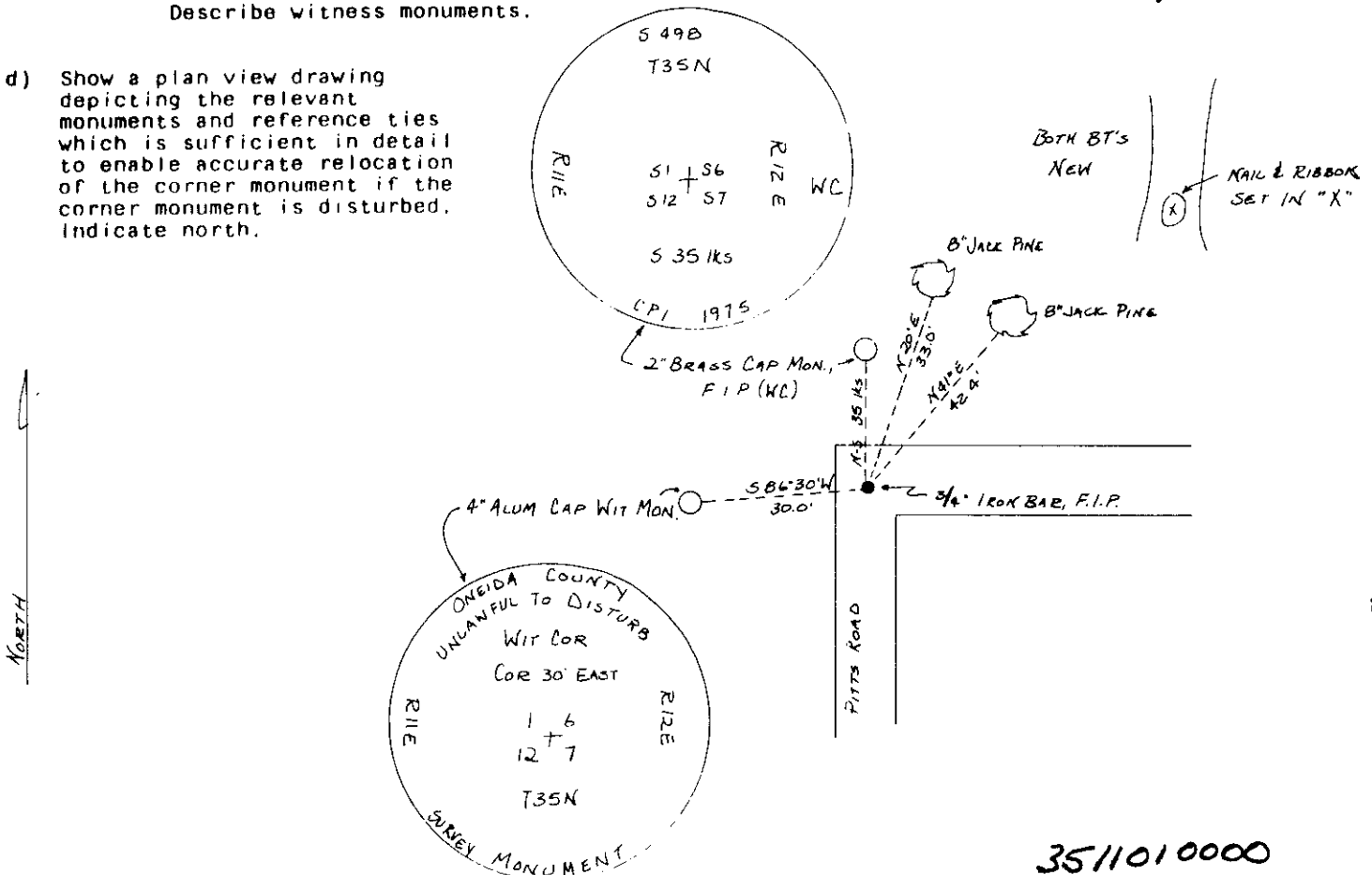
- (b) Describe any record evidence, monument evidence, occupational evidence, testimonial evidence or any other material evidence you considered, and whether the monument was found or placed.

CORNER RE-ESTABLISHED IN CONSOLIDATED PAPERS, INC. SURVEY
 BY PHILIP HANSEN IN 1975. RECOVERED IRON PIN SET BRASS CAP MONUMENT, WL.

1983: FOUND IN PLACE - 3/4" IRON BAR IN ROAD, 2" BRASS CAP ^{WIT.} MONUMENT
 STAMPED AS SHOWN BELOW. SET 4" ALUMINUM CAP
 WITNESS MONUMENT, SCRIBED TWO NEW BT'S.

- (c) In the plan view drawing below, provide reference ties to at least 4 witness monuments, or, if the location is within a municipality, to at least 2 witness monuments. (Witness monuments shall be made of concrete, natural stone, iron or other equally durable material.) Describe witness monuments.

- (d) Show a plan view drawing depicting the relevant monuments and reference ties which is sufficient in detail to enable accurate relocation of the corner monument if the corner monument is disturbed. Indicate north.



(e) Describe any material discrepancy between the location of the corner as restored or reestablished and the location of that corner as previously restored or reestablished by distance and direction. Show the discrepancy on the plan view drawing under (d), above. Show the distances between the corner as previously restored or reestablished and (1) the corner as restored or reestablished, and (2) to at least 2 of the witness monuments shown on the drawing in (d), above.

NONE

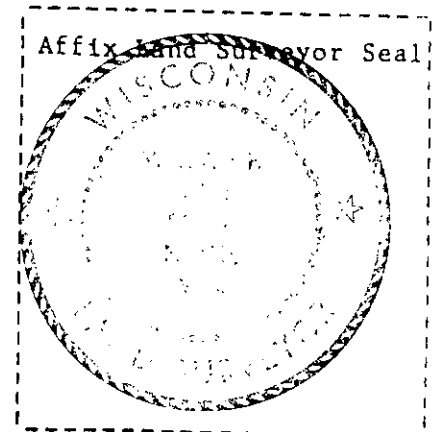
(f) Was the corner restored through acceptance of (1) an obliterated evidence location, or, (2) a found perpetuated location?

(2)

(g&h) Was the corner reestablished through lost corner proportionate methods? If so, show the method, including the directions and distances to other public land survey corners used as evidence or used for proportioning in determining the corner location?

No

REGISTER OF DEEDS OFFICE
ONEIDA COUNTY, WIS.
FILED
JUN 1 1986
At 14:30 O'Clock P.M.
DORIS VERAGE KUEHN
REGISTER OF DEEDS



(1) I, WILLIAM F. KELLY
(Type or print name) certify that the corner location shown on this record was determined by me or under my direction and control and that this U.S. Public Land Survey Monument Record is correct and complete to the best of my knowledge and belief.

William F. Kelly
Signature

2-8-84
Date