

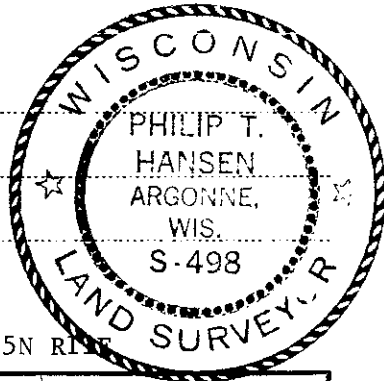
CERTIFIED LAND CORNER RESTORATION

Index No. E-23

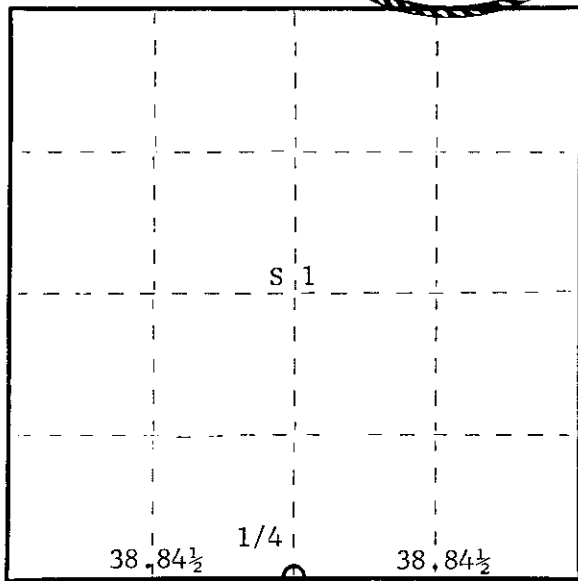
State of Wisconsin }  
County of Oneida } ss.

I Philip T. Hansen, do hereby  
certify that on the 22nd day  
of May, 1975, I found  
evidence of the 1/4  
corner of Sections 1 and 12  
Township 35, North, Range  
11 East, Fourth Principal Meridian,  
as described hereon; and that from this evidence  
I established a new monument and accessories  
as described hereon to perpetuate the original  
location of this corner.

Resident witnesses:



T35N R11E



○ = Corner monument restored.

History of original corner establishment:

Original corner established by Wm. E. Dougherty, Gov. Deputy Surveyor, in 1859, from which  
aspen 9" bears N63°E 18 links, and cherry 7" bears S76°W 26 links.

Corner restored in 1914 by D.H. Vaughan, County Surveyor. He made no mention of finding  
this 1/4 corner. Marked hemlock 14" N70 1/2°E 44 links, and sugar 8" S71 1/2°W 40 links.

Corner re-established by H.C. Lawrence, Registered Land Surveyor, in 1957, during his  
retracement survey. He set the corner at Vaughan's. Calls 38.84 1/2 equidistant. A 4"  
cedar post, from which basswood 20" bears S46°W 62 links, and hemlock 16" bears S32°E  
72 links.

Description of corner evidence found:

Recovered 4" cedar post, squared and scribed 1/2 S S1; 1/2 S S12, in poor condition. Also,  
1 1/2" iron pipe set beside it.

Recovered OBT basswood 20"(24) S46°W? (S34°W) 62 links, scribing half grown over, and  
hemlock 16"(18) S32°E(S29°E) 72 links, scribed 1/2 S BI.

Description of monument and accessories I established to perpetuate the original location of this corner.

Replaced 4" cedar post with 2 1/2" iron pipe with brass cap stamped -

S498  
T35N R11E  
1/4 S | 1  
S | 12  
CPI-1975

Dated at Rhineland, Wis., this 10th day of June, 1975.

Signature Philip T. Hansen Title Registered Land Surveyor Registration No. S-498  
(County Surveyor, Registered Land Surveyor, or other duly authorized official)

Office of Register of Deeds, County of Oneida. I hereby certify that the within  
instrument was filed in this office for record on the 1st day of October, 1975  
at 3:00 o'clock P. M.

Doris Verage Kuehn  
(Register of Deeds)

By..... Deputy

FORM 965 R. C. MILLER CO., MILWAUKEE

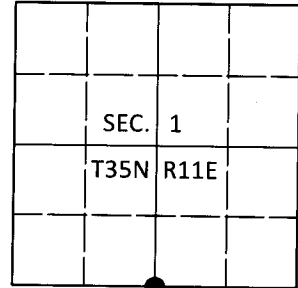
0200101158

# U.S. PUBLIC LAND SURVEY MONUMENT RECORD

Note: This form is intended and designed to fulfill all requirements of Wisconsin Administrative Code, Chapter A-E 7.08 U.S. Public Land Survey Monument Record (3)(a-i).

(a) CORNER LOCATION  
 1/4 Cor. of Secs. 1 & 12  
 Township 35 North  
 Range 11 East of the 4th P.M.  
 Town of Schoepke  
 County of Oneida

WISCRS - Oneida County  
 N: 128,445.41 USft  
 E: 355,035.27 USft  
 Datum: NAD83(1991)  
 GNSS Method: Static - Offset  
 GNSS Control: AME Offsets



(b) HISTORY OF ORIGINAL CORNER ESTABLISHMENT

Original Surveyor: \_\_\_\_\_ Original Accessories: \_\_\_\_\_  
 Date of Survey Commenced: \_\_\_\_\_ see previous monument record  
 Completed: \_\_\_\_\_

(b)(f)(g)(h) Description of monument found at this corner and if it was accepted, state all evidence (material, testimonial, occupational, plats, records, other monuments) used as a basis for accepting. If not accepted or if nothing was found, state evidence used as basis for establishing location. If re-established through lost corner proportionate methods, indicate all monuments, distances and directions used to establish. Indicate type of monument and sign post found or set.

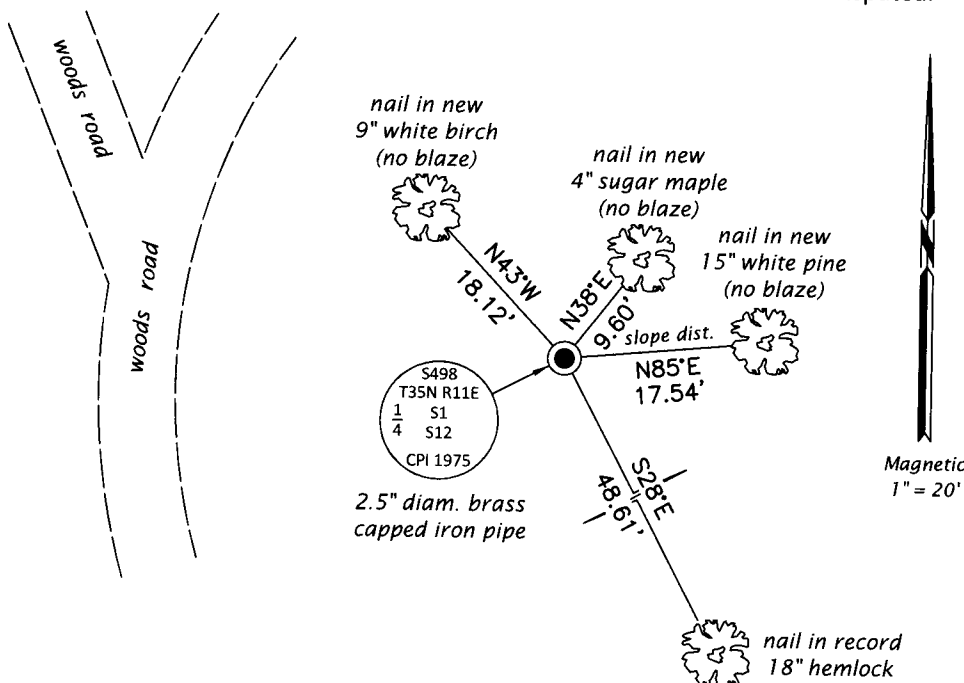
*This is a perpetuation of the following monument record(s) that comprise a complete history of the corner:*

*June 10, 1975: Certified Land Corner Restoration No. 3511010020 by Philip T. Hansen, RLS*

*May 25, 2019: I found and accepted the record monument, a 2.5" diam. iron pipe with a 2.5" diam. brass cap projecting 10" above a ring of stone. The record basswood bearing tree is now gone. I found or established accessories as shown below. I found a white vinyl sign post bearing Northeast, 0.8 ft.*

*The coordinate value shown has been verified by at least one of the following methods: 1) comparison to a previously GPS determined published value; 2) the value is the average of two or more GPS observations at a markedly different time; 3) one or more distances were measured back to the GPS observed corner from temporary GPS observed offset locations.*

(c)(d)(e) Plan view of corner with ties to at least 4 witness monuments. If in disagreement with previously established corner, show the distances between the two corners and also indicate the ties to the disputed.



REGISTER OF DEEDS OFFICE  
 ONEIDA COUNTY  
 FILED

JUN 18 2019

KYLE J. FRANSON  
 REGISTER OF DEEDS

(i) I, Jeffrey W. Austin, Professional Land Surveyor No. S-1885, hereby certify that the corner location on this record was determined by me or under my direction and control and that this U.S. Public Land Survey Monument Record is correct and complete to the best of my knowledge and belief.

*[Handwritten Signature]*  
 Signature

*1 JUNE 2019*  
 Date