

CERTIFIED LAND CORNER RESTORATION

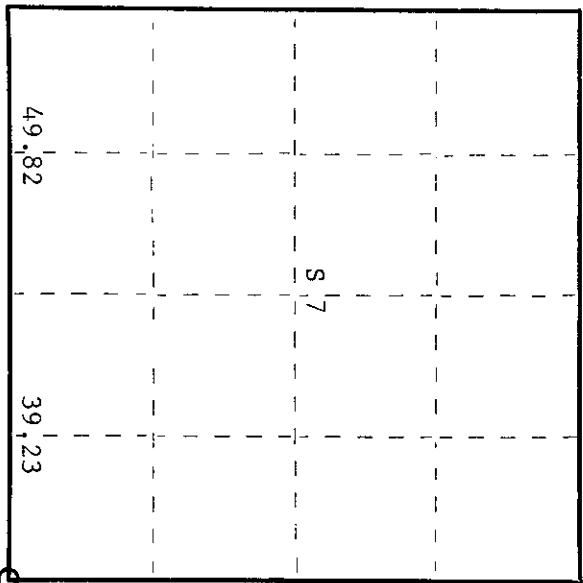
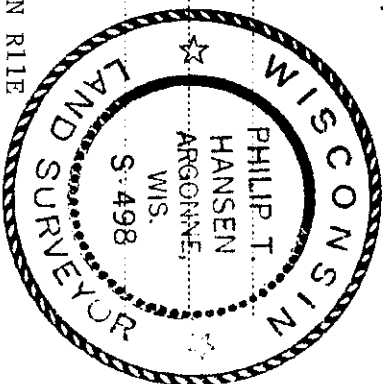
Index No. **J-5**

State of Wisconsin

County of Oneida } ss.

I Philip T. Hansen, do hereby certify that on the 16th day of May, 1975, I found evidence of the Section corner of 7, 8 - 17, 18 Township 35, North, Range 11 East, Fourth Principal Meridian, as described hereon; and that from this evidence I established a new monument and accessories as described hereon to perpetuate the original location of this corner.

Resident witnesses:



O = Corner monument restored.

000101152

History of original corner establishment:

Original corner established by Wm. E. Dougherty, Gov. Deputy Surveyor, in 1859, from which tamarack 12" bears S83°W 20 links, and tamarack 8" bears N45°E 31 links. Corner re-established by D.H. Vaughan in 1916. Original corner was not recovered. Corner was set by proportional measurements. He ran from NW corner of Section 8 to 1/4 corner of Sections 17 and 18. Also from SE corner Section 8 west to the SW corner of Section 7, from which sugar 16" bears N18 1/2°W 22 links, and sugar 18" bears S53 1/2°W 3 links. Corner recovered by H.C. Lawrence, Registered Land Surveyor, in 1954. Recovered iron pipe and Hall's hemlock 16" N26°E 97 links. Lawrence set 4" hemlock post.

Description of corner evidence found:

Recovered 4" hemlock post, squared and scribed S7, S8, S17, S18, in good condition. Also a 2 1/2" iron pipe with brass cap sitting beside it (not stamped). Recovered OBT - hemlock 16" N26°E 97 links, scribed S8 BT.

Description of monument and accessories I established to perpetuate the original location of this corner.

Stamped brass cap -

NBT's - sugar 6" S39°W 34 links, scribed S.C. BT. T35N R11E  
 Sugar 6" N47°W 20.5 links. S7 | S8  
S18 | S17

Dated at Rhineland, Wis., this 4th day of June, 1975.

Signature Philip T. Hansen Title Registered Land Surveyor Registration No. S-498  
 (County Surveyor, Registered Land Surveyor, or other duly authorized official)

Office of Register of Deeds, County of Oneida 1st day of October 1975  
 Instrument was filed in this office for record on the 300 o'clock M. that the within

Loree Virginia Tucker  
 (Register of Deeds)

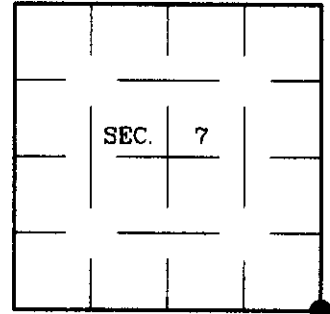
By Deputy

# U.S. PUBLIC LAND SURVEY MONUMENT RECORD

Note: This form is intended and designed to fulfill all requirements of Wisconsin Administrative Code, Chapter A-E 7.08 U.S. Public Land Survey Monument Record (3)(a)(b)(c)(d)(e)(f)(g)(h)(i). An additional sheet may be added if necessary to conform with said requirements.

(a) CORNER LOCATION:  
 Corner common to Secs. 7, 8, 17, 18  
 Township 35 North  
 Range 11 East, 4th Principal Meridian  
 Town of Schoepke

Plane Coordinates  
 X:  
 Y:  
 Datum:  
 County of Oneida



(b) HISTORY OF ORIGINAL CORNER ESTABLISHMENT

Original Surveyor: William Daugherty  
 Date of Survey: Commenced: July 25, 1859  
 Completed: July 29, 1859

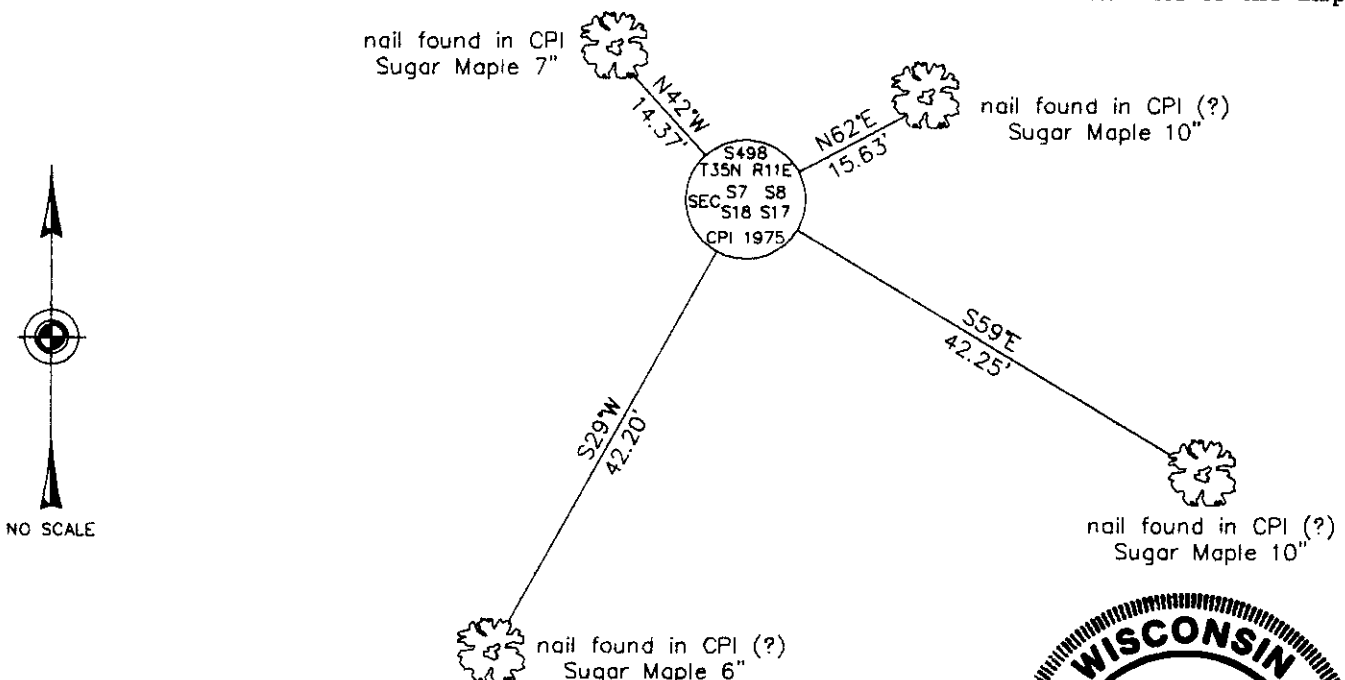
Original Accessories:  
 Tamarack 12 S83°W 20 lks.  
 Tamarack 8 N45°E 31 lks.

(b)(f)(g)(h) Description of monument found at this corner and if it was accepted, state all evidence (material, testimonial, occupational, plats, records, other monuments) used as a basis for accepting. If not accepted or if nothing was found, state evidence used as basis for establishing location. If reestablished through lost corner proportionate methods, indicate all monuments, distances and directions used to establish. Indicate type of monument and sign post found or set.

NOTE: This is a perpetuation of a previous USPLS Monument Record by Philip T. Hansen, RLS dated June 4, 1975 and filed in the office of the Oneida County Register of Deeds. A complete history of the corner can be found on the previous monument record. I accept the previous location as a true and faithful perpetuation or reestablishment of the original corner location and further perpetuate it as follows.

April 13, 2001: I found and accepted an iron post, 2-1/2 ins. diam., firmly set with a 2-1/2 ins. diam. CPI brass cap, 36 ins. above the ground surface, marked as shown below. Hall's Hemlock snag, 16 ins. diam. bears N26°E, 65 ft. dist. Hansen's stump hole bears S41°W, 22-1/2 ft. dist. The centerline of a gravel road bears South, 110 ft. dist. and bears East and N60°W. I found or established accessories as shown below and set a plastic sign post bearing Northeast, 1 ft. dist.

(c)(d)(e) Plan view of corner with ties to at least 4 witness monuments. If in disagreement with previously established corner, show the distances between the two corners and also indicate the ties to the disputed.

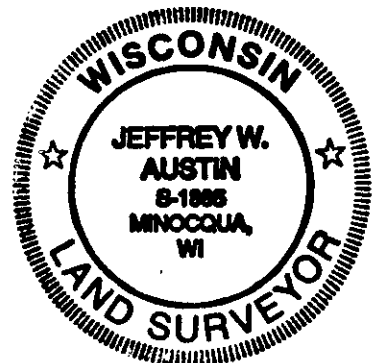


(i) I, Jeffrey W. Austin, Registered Land Surveyor No. S-1885, hereby certify that the corner location on this record was determined by me or under my direction and control and that this U.S. Public Land Survey Monument Record is correct and complete to the best of my knowledge and belief.

Signature

Date

8-22-01



INDEX NO. J-5

3511070000