

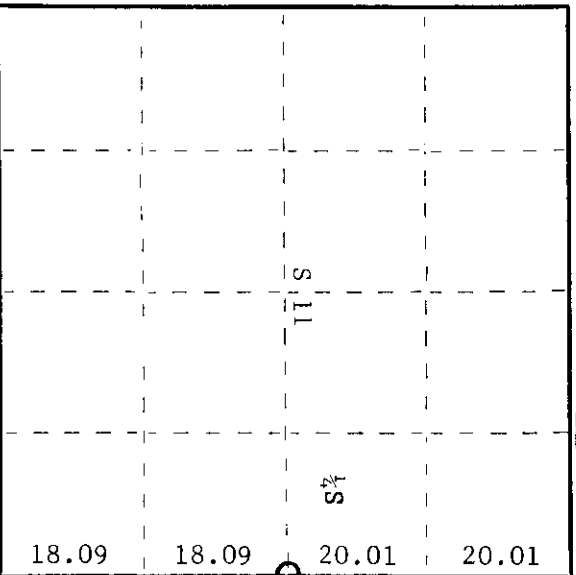
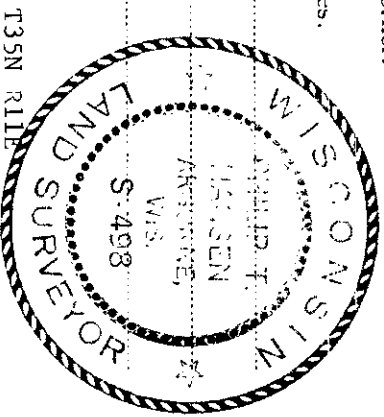
CERTIFIED LAND CORNER RESTORATION

Index No. **G-21**

State of Wisconsin } ss.
 County of Oneida }

I Phillip T. Hansen do hereby certify that on the 11th day of July, 1975, I found evidence of the Quarter corner of Sections 11 and 12 Township 35 North, Range 11 East, Fourth Principal Meridian, as described hereon; and that from this evidence I established a new monument and accessories as described hereon to perpetuate the original location of this corner.

Resident witnesses.



○ = Corner monument restored.

History of original corner establishment:

Original corner established by Wm. E. Dougherty, Gov. Deputy Surveyor, in 1859, from which white pine 16" bears N63°W 21 links and sugar 12" bears S45°E 21 links. Corner recovered and restored by D.H. Vaughan in 1914. Claims to have found stump of pine okay and sugar down but no marks. He made NBT's - sugar 20" N36°W 44 links, and sugar 18" S71½°E 39 links. Corner re-established by H.C. Lawrence in 1958. He found no trace of Vaughan's corner or BT's. Road construction probably destroyed same. He measured west from intersection of N-S and E-W roads 39.24 chains to C¼ corner, centerline of N-S road. Thence continued west on same bearing 35.69 chains for a total of 74.93 chains compared to Vaughan's 74.05. He established the ¼ post at 35.96 chains west of C¼. Set a 6" cedar post and made BT's - elm 9" N40½°W 47 links, and basswood 10" N19½°E 35½ links.

Recovered 6" cedar post, squared and scribed ¼S S11, ¼S S12, in good condition.

Recovered OBT's - elm 9" N40½°W (N42°W) 47 links, scribing grown over.

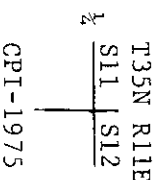
Basswood 10" (11") N19°30'E 35.5 links, scribing grown over.

Description of monument and accessories I established to perpetuate the original location of this corner.

Replaced 6" cedar post with 2½" iron pipe with brass cap stamped -

S498

NBT - Basswood 6" N83°E 25.4 links, scribed ¼ BT.



Dated at Rhinelanders, Wis., this 24th day of July, 1975.

Signature *Phillip T. Hansen* Title Registered Land Surveyor Registration No. S-498
 (County Surveyor, Registered Land Surveyor, or other duly authorized official)

Office of Register of Deeds, County of Oneida
 Instrument was filed in this office for record on the 1st day of July, 1975 at 3:00 o'clock P.M.

Lorne George Kuehn
 Register of Deeds

By Deputy

351112000

U.S. PUBLIC LAND SURVEY MONUMENT RECORD

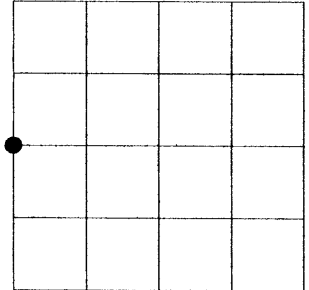
Note: This form is intended and designed to fulfill all requirements of the Wisconsin Administrative Code, Chapter A-E 7.08 U.S. Public Land Monument Record (3)(a)(b)(c)(d)(e)(f)(g)(h)(i). An additional sheet may be added if necessary to conform with said requirements.

(a) CORNER LOCATION:

west quarter corner of Section 12
 Township 35 North
 Range 11 East
 Town of Schoepke
 County of Oneida

COORDINATES

North:
 East:
 Control Station:
 Latitude:
 Longitude:
 Datum Method



SECTION 12

(b) HISTORY OF ORIGINAL CORNER ESTABLISHMENT

Original Surveyor: W.E. Daugherty
 Date of Survey: Commenced July 1863
 Completed July 1863

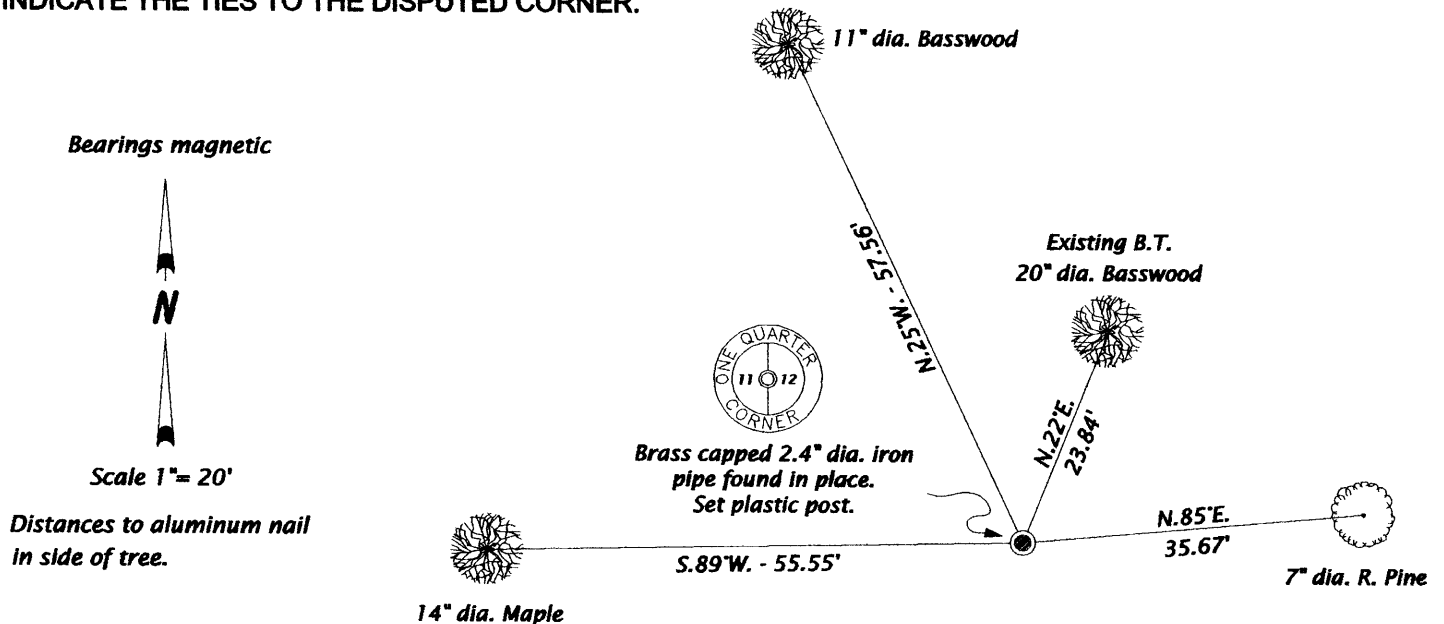
Original B.T.'S
 White Pine 16" dia., N63°W 21 links
 Sugar 12" dia., S45°E 21 links

(f)(g)(h) DESCRIPTION OF MONUMENT FOUND AT THIS CORNER AND IF IT WAS ACCEPTED, STATE ALL EVIDENCE (MATERIAL, TESTIMONIAL, OCCUPATIONS, PLATS, RECORDS, OTHER MONUMENTS) USED AS A BASIS FOR ESTABLISHING LOCATION. IF NOT ACCEPTED OF IF NOTHING WAS FOUND, STATE EVIDENCE USED AS BASIS FOR ESTABLISHING LOCATION. IF REESTABLISHED THROUGH LOST CORNER PROPORTIONATE METHODS, INDICATE ALL MONUMENTS, DISTANCES AND DIRECTIONS USED TO ESTABLISH. INDICATE TYPE OF MONUMENT AND SIGN POST FOUND OR SET.

See previous U.S. Public Land Survey Monument Record G-21 by Phillip Hansen, dated 7/24/75.

Michael L. Oestreich: 1/25/06, Recovered brass capped 2.4" dia. iron pipe mounded with stones. I also recovered 2 bearing trees noted by Hansen, the northeast bearing tree, now a 20" dia. basswood with bearing tree sign bearing N22°E 23.84 feet and the northwest bearing tree, now a badly decayed elm stump bearing N35°W 31.1'. I made new witness ties as shown in the plan below.

(c)(d)(e) PLAN VIEW OF CORNER WITH TIES TO AT LEAST 4 WITNESS MONUMENTS. IF IN DISAGREEMENT WITH PREVIOUSLY ESTABLISHED CORNER, SHOW THE DISTANCE BETWEEN THE TWO CORNERS AND ALSO INDICATE THE TIES TO THE DISPUTED CORNER.



(i) I, MICHAEL L. OESTREICH, REGISTERED LAND SURVEYOR NO. S-2118 HEREBY CERTIFY THAT THE CORNER LOCATION ON THIS RECORD WAS DETERMINED BY ME OR UNDER MY DIRECTION AND CONTROL AND THAT THIS U.S. PUBLIC LAND SURVEY MONUMENT RECORD IS CORRECT AND COMPLETE TO THE BEST OF MY KNOWLEDGE AND BELIEF.

Michael L. Oestreich 1/31/06
 SIGNATURE DATE



351112000

INDEX NO. G 21