

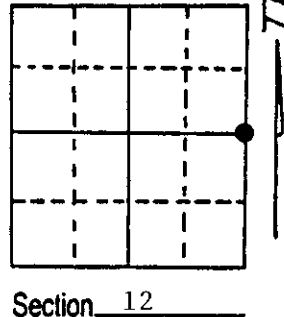
U.S. PUBLIC LAND SURVEY MONUMENT RECORD

Note: This form is intended and designed to fulfill all requirements of Wisconsin Administrative Code, Chapter A-E 5.02, U.S. Public Land Survey Monument Record (3) (a) (b) (c) (d) (e) (f) (g) (h) (i). An additional sheet may be added if necessary to conform with said requirements.

(a) Corner location: Township 35 North
 Range 11 East ~~West~~

Town/City/Village Schoepke

County Oneida



(b) (f) (g) (h) Description of monument found at this corner and if it was accepted, state all evidence (material, testimonial, occupational, plats, records, other monuments) used as a basis for accepting. If not accepted or if nothing was found, state evidence used as basis for establishing location. If reestablished through lost corner proportionate methods, indicate all monuments, distances and directions used to establish.

Reestablished 1/4 corner on line between the NE and SE Section corner of Section 5. The center line of North-South County line road (old Co. 'M'), Town of Schoepke road West and old fence line East (Forest Co.).

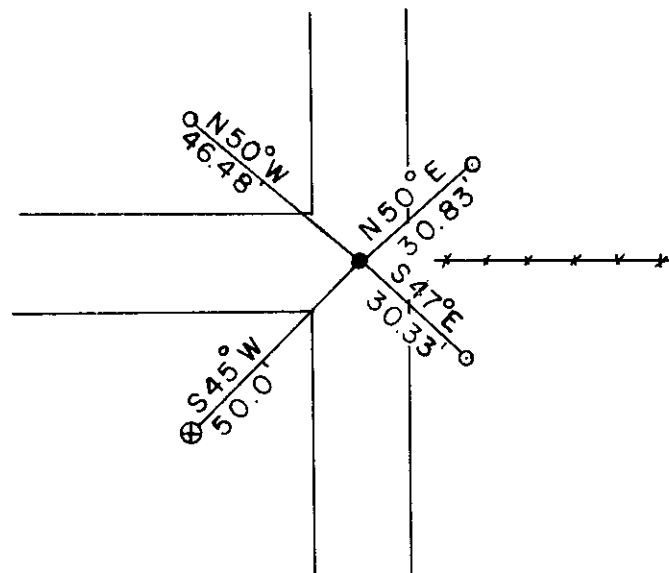
D.H. Vaughan's survey of 1914 has a distance of 2650.56' from above 1/4 corner to NE Section corner, Section 12. Resurvey distance 2653.24'.

(c) (d) (e) Plan view of corner with ties to at least 4 witness monuments. If in disagreement with previously established corner, show the distances between the two corners and also indicate the ties to the disputed corner.

2-1/4" Aluminum Oneida County Monument

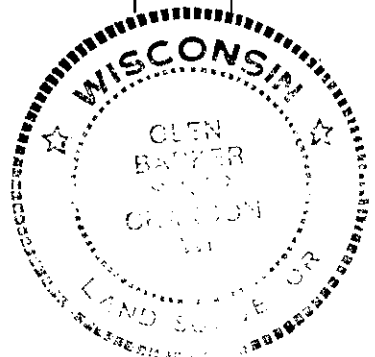


- o 1x30" Iron pipe
- 1x18" Iron pipe
- ⊕ 2-1/4 Alum. Mon.



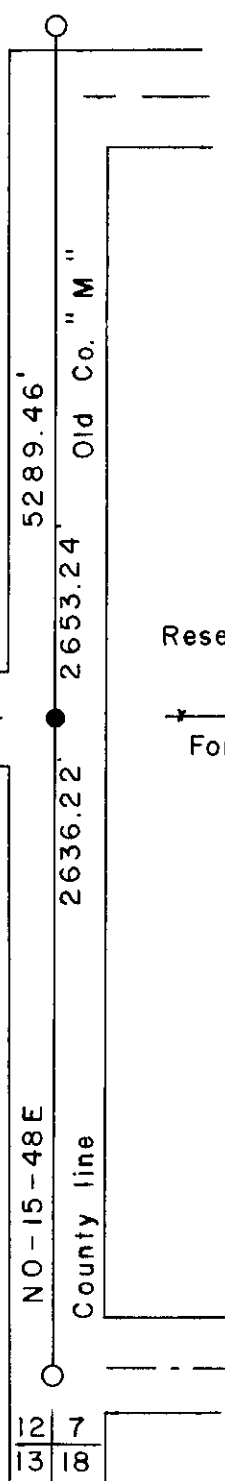
(i) I, Glen Barker
 (type or print name) certify that the corner location on this record was determined by me or under my direction and control and that this U.S. Public Land Survey Monument Record is correct and complete to the best of my knowledge and belief.

Glen Barker Signature Feb 2, 1988 Date



Index No. G-25

1 6
12 7



Reset 1/4 Cor.

Forest County

Toun of Shoepke
Oneida Co.

NO-15-48E

County line

12 7
13 18

REGISTER OF DEEDS OFFICE
ONEIDA COUNTY, WIS.

FILED
FEB 10 1989

At 8:00 O'Clock
DORIS VERAGE KUEHN
REGISTER OF DEEDS