

This form is intended to fulfill the requirements of Chapter A-E 7.08 (3)(a) thru (l) U.S. Public Land Survey Monument Location Record, Wisconsin Administrative Code. Use the reverse side of form for continuation.

U.S. PUBLIC LAND SURVEY MONUMENT LOCATION RECORD

Recorders Data

USPLS CORNER: NE SECTION CORNER SECTION: 24 TOWNSHIP: 35 NORTH RANGE: 11 EAST

NAME OF WATERWAY FOR M.C. CORNER : N/A SECTION LINE: N/A

(CITY)(VILLAGE)(TOWN) OF: SCHOEPE COUNTY OF: ONEIDA

Description of monument found or placed and all other evidence used as the basis for monument location; including monuments and related measurements required if the corner location was reestablished by lost corner proportionate methods. Also indicate name of original surveyor, original survey date and the corner monument, bearing trees, witness or other reference monuments established; including measured bearing and distance ties, from available records.

THIS RECORD CORNER RESTORED AT THE REQUEST OF ONEIDA COUNTY SURVEYOR MICHAEL ROMPORTL DUE TO REMOVAL OF CORNER MONUMENT AND DISTURBANCE OF ACCESSORIES BY PREVIOUS ROADWORK.

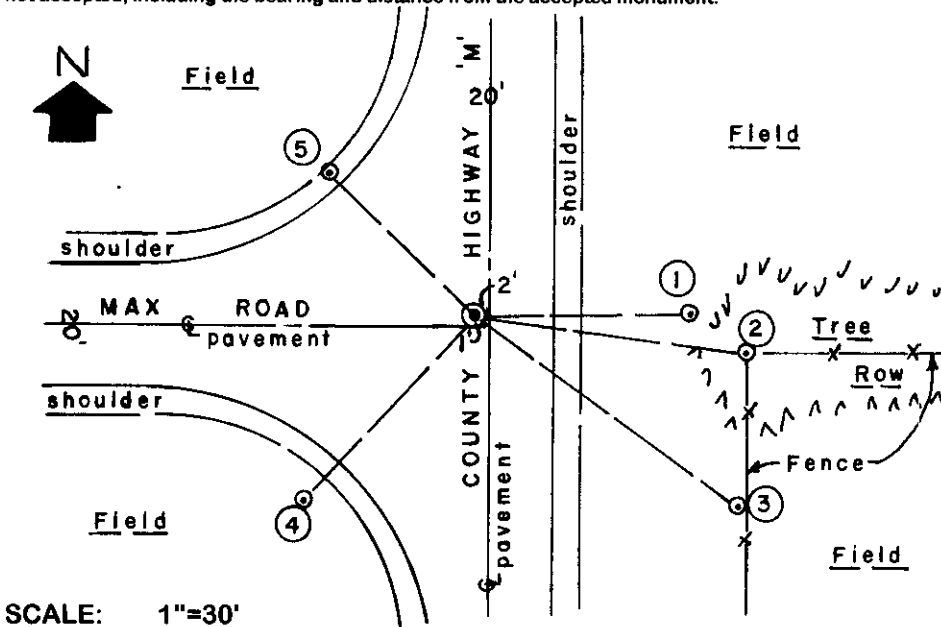
In 1858, Alfred Millard/GLO set a wood post as the original corner and marked OBTs: A 12" Py N20°E 26 links and a 10" Py S32°W 27 links, all of which are now obliterated.

In 1958, Harold C. Lawrence reestablished the corner per location record filed by William F. Kelly, RLS, June 11, 1986.

In 1975, Philip Hanson, RLS 498 of Consolidated Papers, Inc. reestablished the corner per same location record filed by William Kelly, RLS, June 11, 1986.

In 1983, William Kelly, RLS, set a nail in roadway over iron in road intersection attested by parole witness and local area witness Ben Max and replaced wood reference post by H.C. Lawrence S86°E 26.5' from corner with a 2" dia. iron pipe in an existing stone pile, now gone. Kelly also set a standard 2" dia. by 30" long aluminum pipe reference monement with stamped Oneida County cap N45°W 32.0' and S43°W 40.0', which I found graded over and nearly flat about 1' below existing grade of roadway shoulder area; however, by carefull scalping of sub-soil I was able to recover the plumb and firm sided soil cavity for each reference monument, the center of which I used together with record tie by Kelly to lower face of his Basswood BT S82°30'E 42.20', to restore corner location at center of scribed ties triangle on blacktop pavement within 0.15 feet, where I set a 3/4" dia. by 12" long steel shaft flush with existing pavement surface.

Plan view map of monument location with bearing and distance ties to a minimum of four(4) described witness or reference monuments of concrete, natural stone, iron, live bearing trees or equivalent material. If applicable, also show a minimum of two(2) bearing and distance ties to any other monument found and not accepted; including the bearing and distance from the accepted monument.



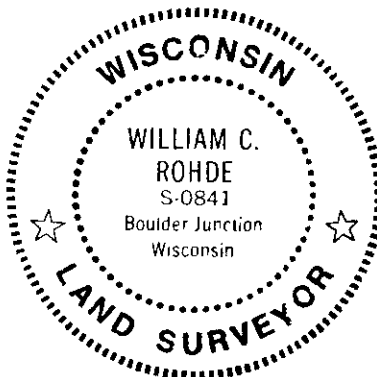
WITNESS MONUMENT TIES:

- ① Old 1" dia. iron pipe found with top 6" above grade East at 33.30'.
- ② Old BT 15" Basswood with open upper & lower faces S82°30'E 42.88.
- ③ 1/2" dia. by 24" long rebar set with standard Reference Mark cap S54°E 50.81'; 4" West of wood fence post.
- ④ Standard 2" dia. by 30" long alum. pipe set with stamped Oneida Co. cap 6" above grade S43°W 39.72'; set a standard white poly 'T' post 5" SW.
- ⑤ Same as witness monument No. 4 but cap flush at N45°W 31.90' and no standard 'T' post nearby.

SCALE: 1"=30'

Unless otherwise indicated, all bearing tree ties are to a .25" dia. by 2.5" long PK nail with a 1.25" dia. steel washer driven into unblazed right face and a .25" dia. by 2.5" long PK nail with a 2" dia. steel washer stamped BT is also driven into unblazed face of bearing tree at DBH; the basis for measured bearings is by compass to nearest degree and all tie distances are measured horizontal by steel tape corrected to nearest 1/100th feet at standard temperature of 68° F.

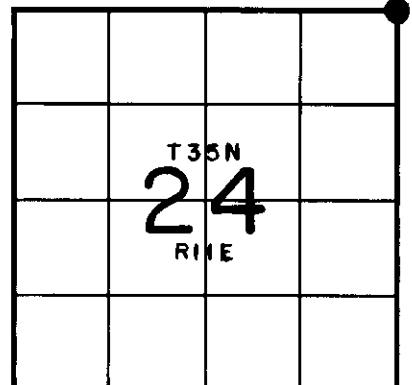
RLS SEAL:



LAND SURVEYOR CERTIFICATE:

I, William C. Rohde, hereby certify that I am duly licensed as a Professional Land Surveyor in the State of Wisconsin; that this USPLS monument location was determined by me and/or under my direct supervision and control; and that this U.S. Public Land Survey Monument Location Record is true and correct to the best of my knowledge and belief.

Signed: *William C. Rohde*
William C. Rohde RLS 841



SECTION LOCATION MAP
INDEX NO. N - 25

Date Signed: June 15, 1999

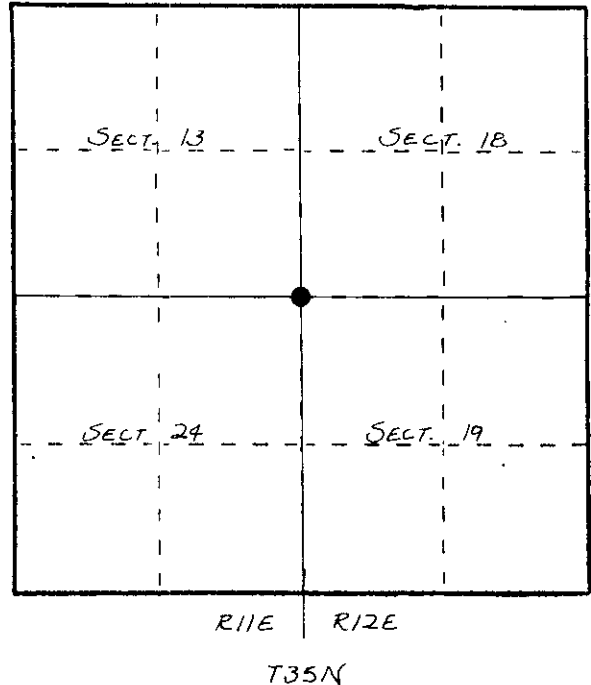
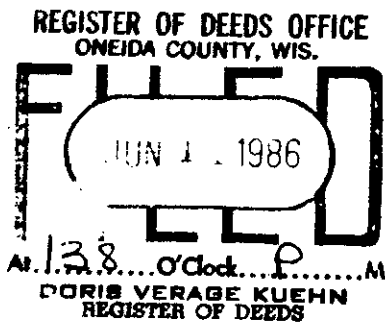
U. S. PUBLIC LAND SURVEY MONUMENT RECORD

INSTRUCTIONS: This record shall show the location of the corner and shall include all of the following nine elements (a through i).

- (a) Identify the corner by reference to the U.S. public land survey system.

○ = Corner monument restored.

ORIGINAL CORNER SET BY ALFRED MILLARD, 1857
CORNER RE-ESTABLISHED BY H.C. LAWRENCE
IN 1958.



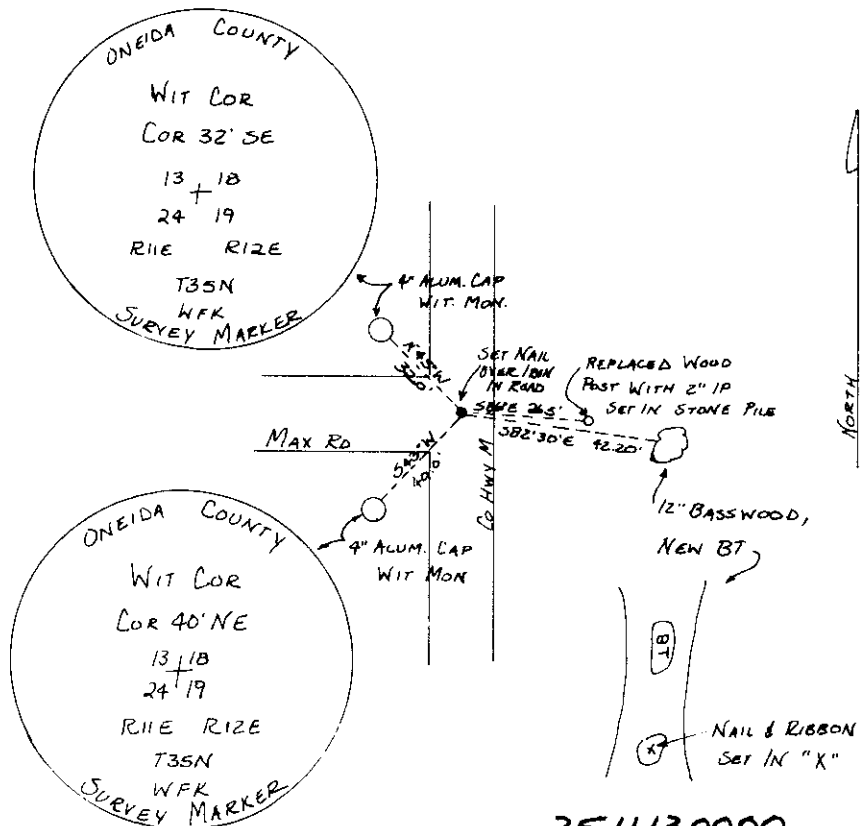
- (b) Describe any record evidence, monument evidence, occupational evidence, testimonial evidence or any other material evidence you considered, and whether the monument was found or placed.

PHILIP HANSEN RE-ESTABLISHED CORNER FOR CONSOLIDATED PAPER INC.
IN 1975.

IN 1983: RE-ESTABLISHED CORNER FROM W.C. (ROTTED WOOD POST, SET BY LAWRENCE)
AND PAROLE TESTIMONY, PAROLE WITNESS - BEN MAX, RESIDENT, AND EXIST. IRON IN RD.
REPLACED ROTTED WOOD POST W.C. WITH 2" x 30" IRON PIPE, SCRIBED NEW BT,
SET 2 4" ALUMINUM CAP WITNESS MONUMENTS, STAMPED AS SHOWN BELOW.
SET NAIL IN ROAD INTERSECTION OVER EXISTING IRON IN ROAD.

- (c) In the plan view drawing below, provide reference ties to at least 4 witness monuments, or, if the location is within a municipality, to at least 2 witness monuments. (Witness monuments shall be made of concrete, natural stone, iron or other equally durable material.) Describe witness monuments.

- (d) Show a plan view drawing depicting the relevant monuments and reference ties which is sufficient in detail to enable accurate relocation of the corner monument if the corner monument is disturbed. Indicate north.



3511/30000

N-25

(e) Describe any material discrepancy between the location of the corner as restored or reestablished and the location of that corner as previously restored or reestablished by distance and direction. Show the discrepancy on the plan view drawing under (d), above. Show the distances between the corner as previously restored or reestablished and (1) the corner as restored or reestablished, and (2) to at least 2 of the witness monuments shown on the drawing in (d), above.

None

(f) Was the corner restored through acceptance of (1) an obliterated evidence location, or, (2) a found perpetuated location?

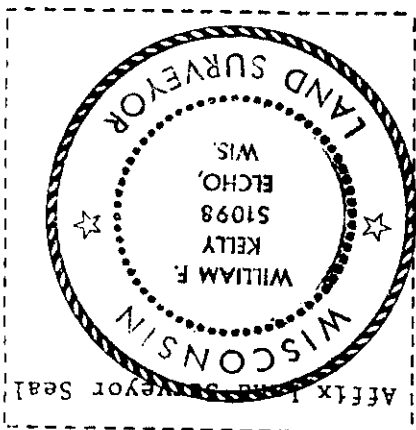
(2)

(g,h) Was the corner reestablished through lost corner proportionate methods? If so, show the method, including the directions and distances to other public land survey corners used as evidence or used for proportioning in determining the corner location?

None

(1) William F Kelly
 (Type or print name) certify that the corner location shown on this record was determined by me or under my direction and control and that this U.S. Public Land Survey Monument Record is correct and complete to the best of my knowledge and belief.

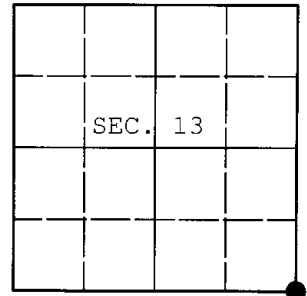
William F Kelly Signature
 2-8-84 Date



U.S. PUBLIC LAND SURVEY MONUMENT RECORD

Note: This form is intended and designed to fulfill all requirements of Wisconsin Administrative Code, Chapter A-E 7.08 U.S. Public Land Survey Monument Record (3) (a) (b) (c) (d) (e) (f) (g) (h) (i). An additional sheet may be added if necessary to conform with said requirements.

(a) CORNER LOCATION: WISCRS - Oneida County
Cor. of Secs. 13, 18, 19 & 24 N: 117,764.68 USft
Township 35 North E: 357,664.93 USft
Range 11&12 East of the 4th P.M. Datum: NAD 1983(2011)
Town of Schoepke County of Oneida



(b) HISTORY OF ORIGINAL CORNER ESTABLISHMENT

Original Surveyor: Original Accessories:
Date of Survey: Commenced:
Completed:

(b) (f) (g) (h) Description of monument found at this corner and if it was accepted, state all evidence (material, testimonial, occupational, plats, records, other monuments) used as a basis for accepting. If not accepted or if nothing was found, state evidence used as basis for establishing location. If re-established through lost corner proportionate methods, indicate all monuments, distances and directions used to establish. Indicate type of monument and sign post found or set.

NOTE: This is a perpetuation of a previous USPLS Monument Record by William C. Rohde, RLS dated June 15, 1999 and filed in the office of the Oneida County Register of Deeds. A complete history of the corner can be found on the previous monument record. I accept the previous location as a true and faithful perpetuation or reestablishment of the original corner location and further perpetuate it as follows.

May 21, 2016: I found and accepted the record monument, a 0.75" diam. iron rod in the paved intersection. The existing accessories were found in substantial agreement with the record and were not remeasured as the sole purpose of this work is to report the coordinates of the corner point.

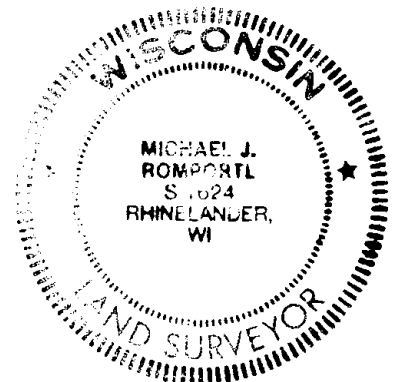
The coordinates shown were derived from two independent RTK observations of the corner point and are referenced to the WISCORS GNSS Network.

(c) (d) (e) Plan view of corner with ties to at least 4 witness monuments. If in disagreement with previously established corner, show the distances between the two corners and also indicate the ties to the disputed.

REGISTER OF DEEDS OFFICE
ONEIDA COUNTY
FILED

DEC 28 2016

AT _____ O'CLOCK _____ M
KYLE J. FRANSON
REGISTER OF DEEDS



(i) I, Michael J. Romportl, Professional Land Surveyor No. S-1624, hereby certify that the corner location on this record was determined by me or under my direction and control and that this U.S. Public Land Survey Monument Record is correct and complete to the best of my knowledge and belief.

Michael J Romportl 12/23/2016
Signature Date