

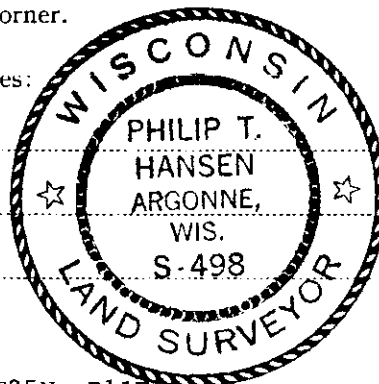
CERTIFIED LAND CORNER RESTORATION

Index No. N-23

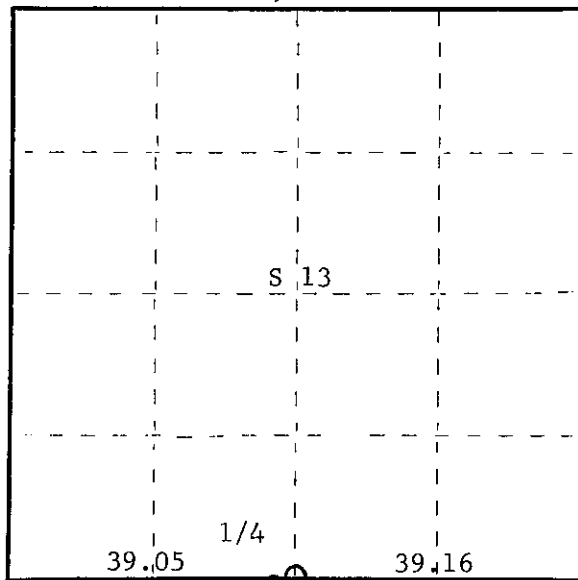
State of Wisconsin }  
County of Oneida } ss.

I Philip T. Hansen, do hereby certify that on the 15th day of April, 19 75, I found evidence of the Quarter corner of Sections 13 and 24 Township 35, North, Range 11 East, Fourth Principal Meridian, as described hereon; and that from this evidence I established a new monument and accessories as described hereon to perpetuate the original location of this corner.

Resident witnesses:



T35N, R11E



○ = Corner monument restored.

History of original corner establishment:  
Original corner established by Wm. E. Dougherty, Govt. Deputy Surveyor, in 1859. Set BT's - Birch 8", S44°W, 9 links and aspen 10", N17°E, 15 links.  
Corners re-established by D.H. Vaughan. Cedar stump 12", N10½W, 48 links and cedar stump 15", N86°E, 17½ links (1908).  
Corner re-established by H.C. Lawrence, Registered Land Surveyor, in 1958. No trace of Vaughan's corner or BT's. He measured from the corner section 13-18-24-19. (Center line of County "M" on county line thence West on C/L of road 39.16 chains to fence North in Section 13 and field East and timber West in Section 24.) From C-1/4 Section 24 chained North to NC-1/16 and prolonged the line and doubled the distance to check on 1/4 corner. From Vaughan's W-1/16 corner (old post in fence line) measured 20.44 chains East to the fence line. Set cedar post in fence line North of road. Triple trunk elm S86°W, 97½ links and sugar maple 7", North 51 links.

Description of corner evidence found:  
Recovered H.C. Lawrence's 5" cedar post squared and scribed S13 1/4-S; Section 24 WC 15 links. 1/4-S in good condition. Also found a 1" pipe with rock carron piled around both stakes.  
Recovered triple trunk elm S86°E, 97½ links, scribing grown over. 7" sugar maple North 51 links. Scribed BT now a stump. Bearing and distance from triple elm does not coincide with original. Observed bearing S80°E at 99.7 links.

Description of monument and accessories I established to perpetuate the original location of this corner.  
Replaced wooden stake and 1" iron pipe with 2-1/2" galvanized iron pipe with brass cap stamped -

NBT's - Sugar maple 10"	N51°E	105 links	scribed 1/4 BT	S498
Elm 12"	N12°W	115 links	scribed 1/4 BT	T35N, R11E

1/4  $\frac{S13}{S24}$

CPI-1975

Dated at Rhineland, Wis., this 15th day of April, 19 75

Signature Philip T. Hansen Title Registered Land Surveyor Registration No. S-498  
(County Surveyor, Registered Land Surveyor, or other duly authorized official)

Office of Register of Deeds, County of Oneida, I hereby certify that the within instrument was filed in this office for record on the 1st day of October, 19 75 at 3:00 o'clock P. M.

Doris Verage Kuehn  
(Register of Deeds)

By.....Deputy

FORM 903 H. C. MILLER CO., MILWAUKEE

02001155

This form is intended to fulfill the requirements of Chapter A-E 7.08 (3)(a) thru (l) U.S. Public Land Survey Monument Location Record, Wisconsin Administrative Code. Use the reverse side of form for continuation.

**U.S. PUBLIC LAND SURVEY MONUMENT LOCATION RECORD**

Recorders Data

USPLS CORNER: NORTH 1/4 CORNER SECTION: 24 TOWNSHIP: 35 NORTH RANGE: 11 EAST

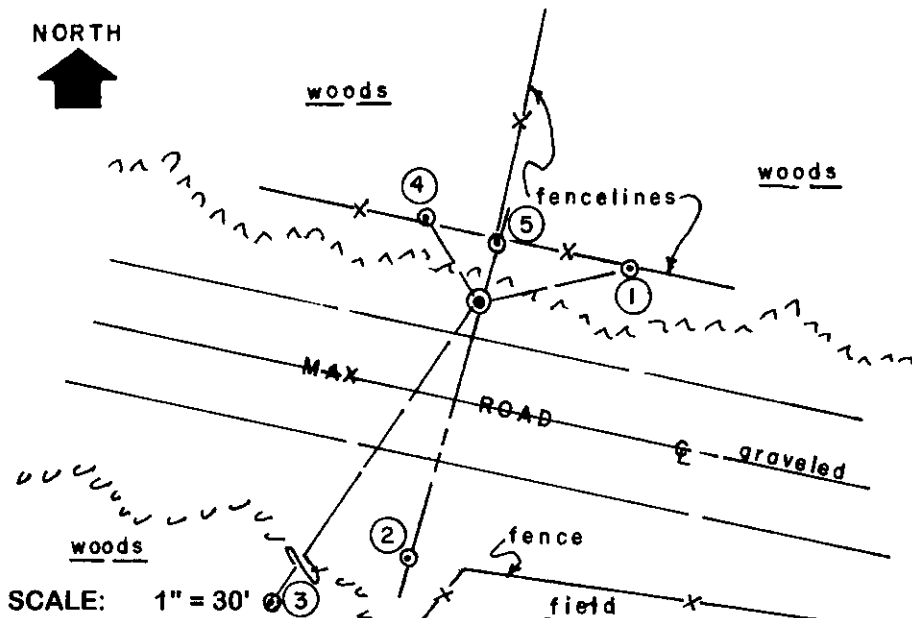
NAME OF WATERWAY FOR M.C. CORNER : N/A SECTION LINE: N/A

(CITY)(VILLAGE)(TOWN) OF: SCHOEPEKE COUNTY OF: ONEIDA

Description of monument found or placed and all other evidence used as the basis for monument location; including monuments and related measurements required if the corner location was reestablished by lost corner proportionate methods. Also indicate name of original surveyor, original survey date and the corner monument, bearing trees, witness or other reference monuments established; including measured bearing and distance ties, from available records.

THIS CORNER RECOVERED, RE-REFERENCED AND PERPETUATED AT THE REQUEST OF AND APPROVAL OF ONEIDA COUNTY SURVEYOR MICHAEL ROMPORTL, DUE TO PENDING TOWN HIGHWAY IMPROVEMENT, IN ACCORD WITH CERTIFIED LAND CORNER RESTORATION RECORD FILED BY PHILIP T. HANSEN, RLS 498, ON OCTOBER 1, 1975 IN ONEIDA COUNTY RECORDS. In 1859, William E. Daugherty/GLO set a wood post as the original corner and marked OBTs: an 8" Bw S44°W 9 links and a 10" Aspen N17°E 15 links, all of which are now obliterated beyond corner recovery purposes. In 1908, D.H. Vaughan re-established the corner and marked new BTs: a 12" Cedar stump N10.5°W 48 links and a 15" Cedar stump N86°E 17.5 links. In 1958, Harold C. Lawrence reestablished the corner as he could not find any original GLO or Vaughan's 1908 corner evidence, and set a new Cedar post in fenceline North of existing roadway and marked new BTs: a triple trunk Elm S86°W 97.5 links and a 7" Sugar Maple North 51 links. In 1975, Hansen found the Lawrence 5" squared and scribed Cedar witness post and a 1" iron pipe in a rock cairn 15 links North of the 1/4 corner location; he also recovered Lawrence's triple trunk Elm BT with face scribing grown over at N80°E 99.7 links and his 7" Sugar Maple North 51 links. Hansen replaced the old Cedar post and iron pipe witness monuments with a standard 2" galvanized iron pipe with brass cap stamped as a witness monument 15 links North of the 1/4 corner, where I found an old iron pipe with uncapped top 6" below grade at edge of shallow roadway ditch, and he marked new BTs: a 10" Sugar Maple N51°E 105 links, now a 12" with upper blaze shut but plain and lower blaze open with scribing at N60°E, and a 12" Elm N12°W 115 links, now a broken off wind fall stub flat on grade, distance and bearing OK. I drove a standard 2" dia. by 30" long aluminum pipe monument with stamped Oneida County cap 3" below grade over the old iron pipe found at the 1/4 corner location and measured new ties. This recovery completed August 26, 1999; there were no direct witnesses other than drive-bys. I set a standard white poly "T" marker post N05°E 5.3' from the 1/4 corner monument.

Plan view map of monument location with bearing and distance ties to a minimum of four(4) described witness or reference monuments of concrete, natural stone, iron, live bearing trees or equivalent material. If applicable, also show a minimum of two(2) bearing and distance ties to any other monument found and not accepted; including the bearing and distance from the accepted monument.



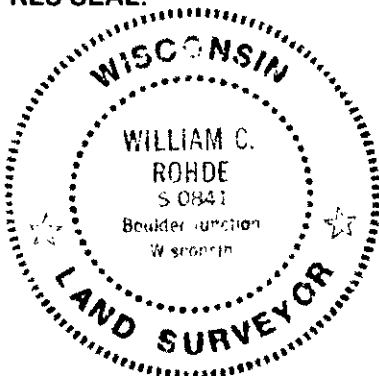
**WITNESS MONUMENT TIES:**

- ① New BT 6.5" Pw with ingrown E/W fence wire N77°E 24.17'.
- ② 1" dia. by 24" long iron pipe set with standard yellow poly Reference Mark cap flush S15°W 42.23'.
- ③ New BT North 12" trunk of four(4) Elm S34°W 73.23'.
- ④ New BT 5.5" Ash N33°W 15.10'; 2' North of old E/W fenceline.
- ⑤ 2" dia. witness pipe found with stamped brass cap 30" above grade, in a rock cairn, N15°E 9.99'; a 5" Sb with survey marker sign on West face is 3' East and 10" South.

SCALE: 1" = 30'

Unless otherwise indicated, all bearing tree ties are to a .25" dia. by 2.5" long PK nail with a 1.25" dia. steel washer driven into unblazed right face and a .25" dia. by 2.5" long PK nail with a 2" dia. steel washer stamped BT is also driven into unblazed face of bearing tree at DBH; the basis for measured bearings is by compass to nearest degree and all tie distances are measured horizontal by steel tape corrected to nearest 1/100th feet at standard temperature of 68° F.

RLS SEAL:

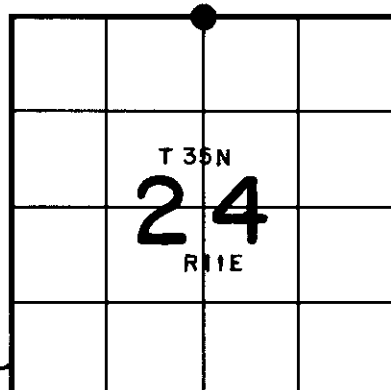


LAND SURVEYOR CERTIFICATE:

I, William C. Rohde, hereby certify that I am duly licensed as a Professional Land Surveyor in the State of Wisconsin; that this USPLS monument location was determined by me and/or under my direct supervision and control; and that this U.S. Public Land Survey Monument Location Record is true and correct to the best of my knowledge and belief.

Signed: *William C. Rohde*  
William C. Rohde RLS 841

Date Signed: January 19, 2000



SECTION LOCATION MAP

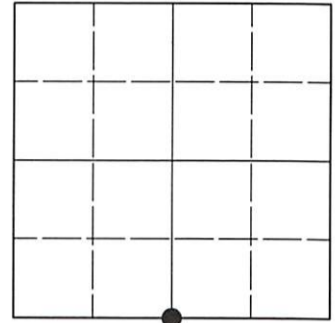
INDEX NO. N 23  
3511130020

# U.S. PUBLIC LAND SURVEY MONUMENT RECORD

Note: This form is intended and designed to fulfill all requirements of Wisconsin Administrative Code, Chapter A-E 7.08 U.S. Public Land Survey Monument Record (3)(a-i).

(a) CORNER LOCATION  
 1/4 Cor. of Secs. 13 & 24  
 Township 35 North  
 Range 11 East of the 4th P.M.  
 Town of Schoepke  
 County of Oneida

WISCRS - Oneida County  
 N: 118,006.56 USft  
 E: 355,099.60 USft  
 Datum: NAD 83(2011) ep. 2010.00  
 GNSS Method: RTN - Direct  
 GNSS Control: WISCORS VRS



Sec. 13, T. 35 N., R. 11 E.

(b)(f)(g)(h) Description of monument found at this corner and if it was accepted, state all evidence (material, testimonial, occupational, plats, records, other monuments) used as a basis for accepting. If not accepted or if nothing was found, state evidence used as basis for establishing location. If re-established through lost corner proportionate methods, indicate all monuments, distances and directions used to establish. Indicate type of monument and sign post found or set.

*This record is a perpetuation of the following land corner document(s):*

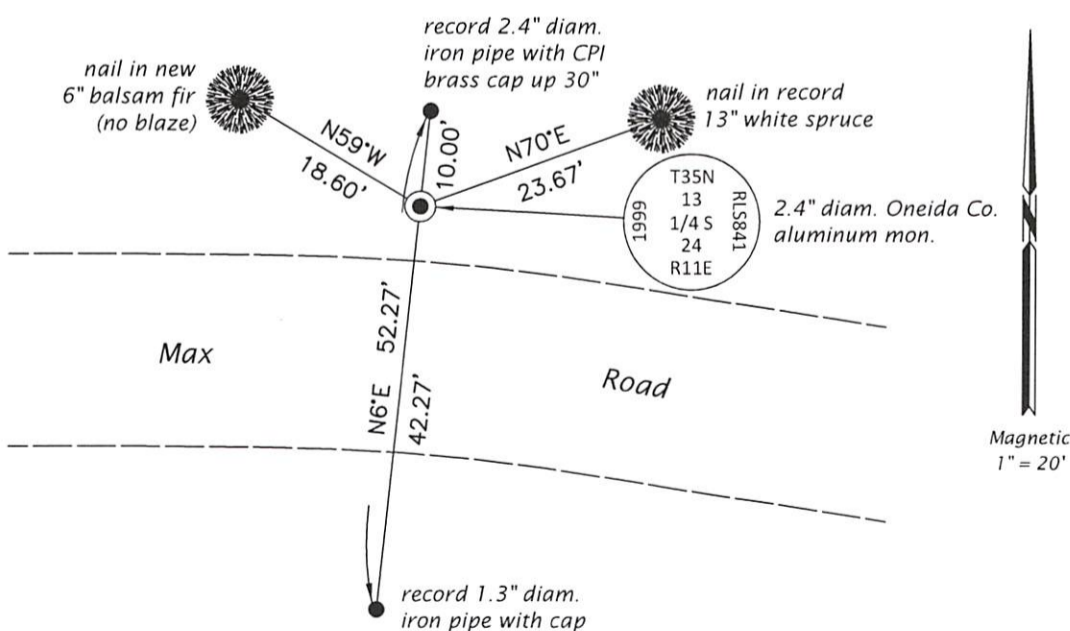
*January 19, 2000: USPLS Monument Record by William C. Rohde, filed in Oneida County*

*A complete history of the corner can be found on the previous land corner document(s). I accept the record activity as a true and faithful perpetuation or reestablishment of the original corner location and further perpetuate it as described below.*

*July 16, 2021: I found and accepted the record monument, a 2.4" diam. aluminum pipe, firmly set, with a 3.3" diam. Oneida Co. aluminum cap buried 6" beneath the ditch surface. The record ash bearing tree at N33°W has been cut. I found or established accessories as shown below. I found a white vinyl sign post bearing North, 5.0 ft.*

*The coordinate value shown has been verified by at least one of the following methods: 1) comparison to a previously GNSS determined published value; 2) the value is the average of two or more GNSS observations at a markedly different time; 3) one or more distances were measured back to the GNSS observed corner from temporary GNSS observed offset locations.*

(c)(d)(e) Plan view of corner with ties to at least 4 witness monuments. If in disagreement with previously established corner, show the distances between the two corners and also indicate the ties to the disputed.



REGISTER OF DEEDS OFFICE  
 ONEIDA COUNTY  
 FILED

SEP 27 2021

KYLE J. FRANSON  
 REGISTER OF DEEDS

(i) I, Jeffrey W. Austin, Professional Land Surveyor No. S-1885, hereby certify that the corner location on this record was determined by me or under my direction and control and that this U.S. Public Land Survey Monument Record is correct and complete to the best of my knowledge and belief.

  
 Signature

SEP. 5, 2021  
 Date