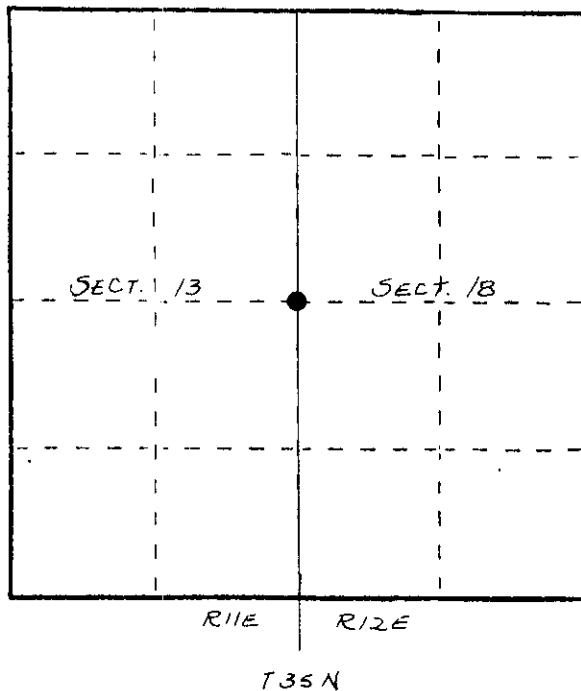
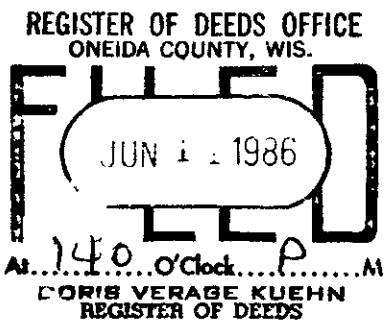


U. S. PUBLIC LAND SURVEY MONUMENT RECORD

INSTRUCTIONS: This record shall show the location of the corner and shall include all of the following nine elements (a through i).

- (a) Identify the corner by reference to the U.S. public land survey system.
- = Corner monument restored.

ORIGINAL CORNER ESTABLISHED BY ALFRED MILLARD IN 1858 CORNER WAS RE-ESTABLISHED BY H.C. LAWRENCE, R.L.S. IN 1958 LAWRENCE SET A 5" CEDAR POST, SQUARED AND SCRIBED: S13 WC-14S. S1B, 41 IKS W FROM WHICH 10" OAK BEARS S50°W & 5" ELM BEARS N27°W 11'12".



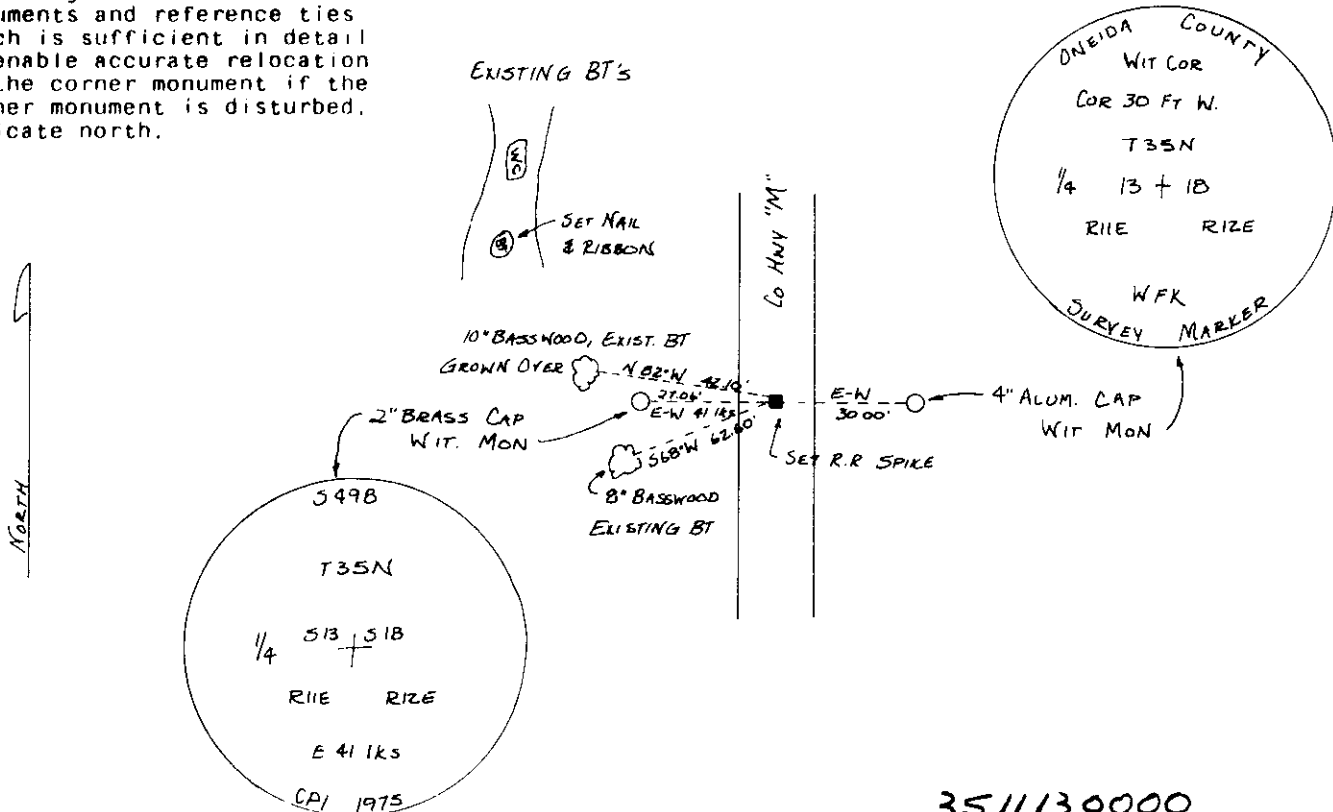
- (b) Describe any record evidence, monument evidence, occupational evidence, testimonial evidence or any other material evidence you considered, and whether the monument was found or placed.

IN 1975 PHILIP HANSEN RECOVERED W.C. SET BY LAWRENCE. FOUND NO TRACE OF BT'S. A 1 1/2" IRON PIPE HAD BEEN SET BESIDE WOOD POST. AN OLD, ROTTED POST OF UNKNOWN ORIGIN ALSO LAY BESIDE ROCK CARRON AROUND LAWRENCE'S CEDAR POST REPLACED WOODEN POST WITH 2 1/2" IRON PIPE WITH BRASS CAP. SCRIBED 2 8" BASSWOOD BT'S

1983- FOUND IN PLACE: 2" BRASS CAP^{WC} MONUMENT, STAMPED AS SHOWN BELOW; 2 EXISTING BASSWOOD BT'S SET RR SPIKE FROM EXIST. W.C., SET 4" ALUMINUM CAP WITNESS MONUMENT, SET NAIL & RIBBON IN BASE OF EXIST. BT'S

- (c) In the plan view drawing below, provide reference ties to at least 4 witness monuments, or, if the location is within a municipality, to at least 2 witness monuments. (Witness monuments shall be made of concrete, natural stone, iron or other equally durable material.) Describe witness monuments.

- (d) Show a plan view drawing depicting the relevant monuments and reference ties which is sufficient in detail to enable accurate relocation of the corner monument if the corner monument is disturbed. Indicate north.



351130000

(e) Describe any material discrepancy between the location of the corner as restored or reestablished and the location of that corner as previously restored or reestablished by distance and direction. Show the discrepancy on the plan view drawing under (d), above. Show the distances between the corner as previously restored or reestablished and (1) the corner as restored or reestablished, and (2) to at least 2 of the witness monuments shown on the drawing in (d), above.

NONE

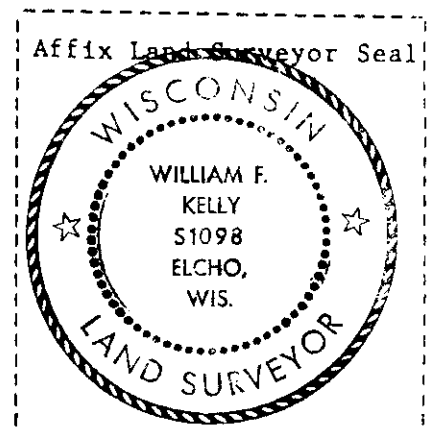
(f) Was the corner restored through acceptance of (1) an obliterated evidence location, or, (2) a found perpetuated location?

(2)

(g&h) Was the corner reestablished through lost corner proportionate methods? If so, show the method, including the directions and distances to other public land survey corners used as evidence or used for proportioning in determining the corner location?

No

(1) I, WILLIAM F KELLY
(type or print name) certify that the corner location shown on this record was determined by me or under my direction and control and that this U.S. Public Land Survey Monument Record is correct and complete to the best of my knowledge and belief.



William F Kelly
Signature

2-8-84
Date

This form is intended to fulfill the requirements of Chapter A-E 7.08 (3)(a) thru (i) U.S. Public Land Survey Monument Location Record, Wisconsin Administrative Code. Use the reverse side of form for continuation.

U.S. PUBLIC LAND SURVEY MONUMENT LOCATION RECORD

Recorders Data

USPLS CORNER: EAST 1/4 CORNER SECTION: 13 TOWNSHIP: 35 NORTH RANGE: 11 EAST

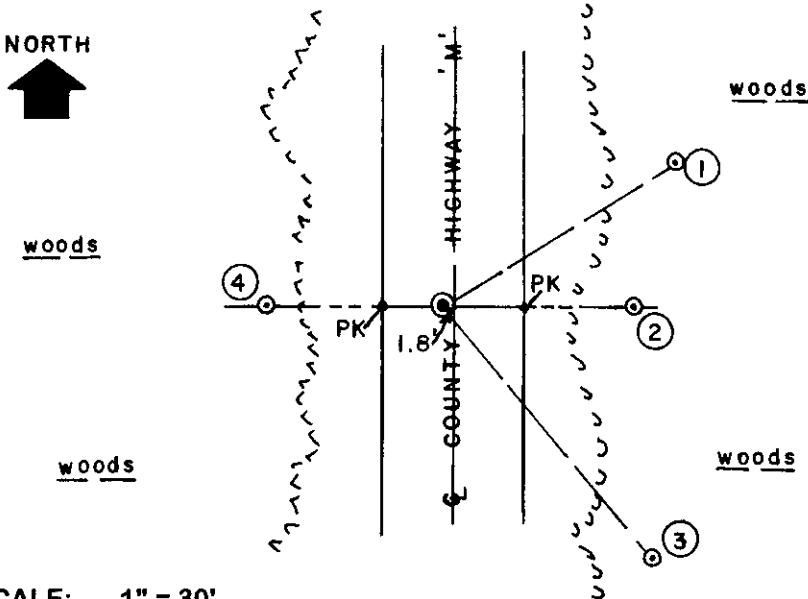
NAME OF WATERWAY FOR M.C. CORNER: N/A SECTION LINE: N/A

(CITY)(VILLAGE)(TOWN) OF: SCHOEPKE COUNTY OF: ONEIDA

Description of monument found or placed and all other evidence used as the basis for monument location; including monuments and related measurements required if the corner location was reestablished by lost corner proportionate methods. Also indicate name of original surveyor, original survey date and the corner monument, bearing trees, witness or other reference monuments established; including measured bearing and distance ties, from available records.

THIS CORNER REESTABLISHED IN NEW BLACKTOP ROAD PAVEMENT AT THE REQUEST AND APPROVAL OF ONEIDA COUNTY SURVEYOR MICHAEL ROMPORTL, IN ACCORD WITH CERTIFIED LAND CORNER RESTORATION RECORDS FILED BY PHILIP T. HANSEN, RLS 498, ON OCTOBER 1, 1975 AND FILED BY WILLIAM F. KELLY, RLS 1098, ON JUNE 11, 1985, IN ONEIDA COUNTY RECORDS. I reset this corner location with a 7/16" dia. by 8" long galvanized iron spike driven flush with existing blacktop roadway pavement, on a right transit line between undisturbed witness monuments found and I measured new ties as described below. In May, 1858, Alfred Millard/GLO set a wood post as the original corner and marked OBTs: a 14" By N25°W 22 links and a 12" Elm S65°E 18 links, all of which are now obliterated. In 1908, H.C. Lawrence had found the original corner evidence but could not find same in 1958, so he reestablished the corner by retracement and set a scribed 5" cedar witness post 41 links west from which he noted a 10" Oak BT S50°W and a 5" Elm N27°W 11.5". In March 1975, Philip T. Hansen, RLS 498, found the H.C. Lawrence witness post intact with an iron pipe driven by it in a cairn of rocks, but did not find either of the Lawrence BTs. He replaced the post and iron pipe found with a 2.5" dia. by 5' long galvanized iron pipe monument with a stamped brass cap and noted new BTs: an 8" Basswood N66°W 25 links and an 8" Basswood S58°W 58.3 links which he blazed and scribed, which I found OK as a 11" and a 21" Basswood with upper and lower face blazes shut but plain. In 1985, William F. Kelly, RLS 1098, found the iron pipe witness monument and BTs noted by Hansen in 1975, and set a RR spike at the corner in existing roadway and a standard aluminum pipe monument with stamped Oneida County cap as a witness monument on a right line 30.00' East of the corner and noted new ties from the corner to old 10" Basswood BT N83°W 42.12' and to old 8" Basswood BT S68°W 62.50'. This recovery completed August 26, 1999; there were no direct witnesses other than an occasional vehicle drive-by. Before setting spike at the corner a weak magnetic locator reading was detected directly below it.

Plan view map of monument location with bearing and distance ties to a minimum of four(4) described witness or reference monuments of concrete, natural stone, iron, live bearing trees or equivalent material. If applicable, also show a minimum of two(2) bearing and distance ties to any other monument found and not accepted; including the bearing and distance from the accepted monument.



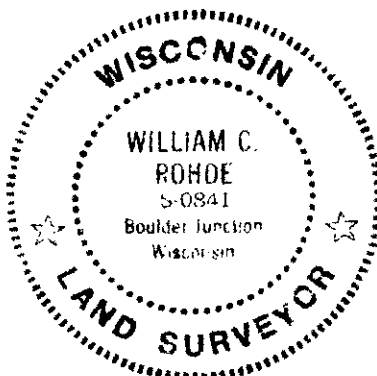
WITNESS MONUMENT TIES:

- ① New BT 10" Mr N58°E 42.43'.
- ② Standard 2" dia. aluminum pipe monument found undisturbed with stamped Oneida County cap 9" above grade East 30.00'.
- ③ New BT 10" Mr, SW trunk of two, S40°E 51.65'.
- ④ 2" dia. galvanized iron pipe found undisturbed with stamped brass cap 28" above grade West 27.06'. I set a standard white poly 'T' marker post 6" East of Witness Monument 2 and 1/4" dia. by 2.5" long PK nails on east and west edge of blacktop mat on right transit line between wit. mon.

SCALE: 1" = 30'

Unless otherwise indicated, all bearing tree ties are to a .25" dia. by 2.5" long PK nail with a 1.25" dia. steel washer driven into unblazed right face and a .25" dia. by 2.5" long PK nail with a 2" dia. steel washer stamped BT is also driven into unblazed face of bearing tree at DBH; the basis for measured bearings is by compass to nearest degree and all tie distances are measured horizontal by steel tape corrected to nearest 1/100th feet at standard temperature of 68° F.

RLS SEAL:



LAND SURVEYOR CERTIFICATE:

I, William C. Rohde, hereby certify that I am duly licensed as a Professional Land Surveyor in the State of Wisconsin; that this USPLS monument location was determined by me and/or under my direct supervision and control; and that this U.S. Public Land Survey Monument Location Record is true and correct to the best of my knowledge and belief.

Signed: *William C. Rohde*
William C. Rohde RLS 841

		T 35N	
		13	
		R1E	

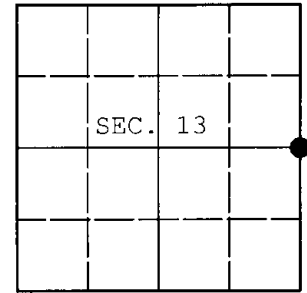
SECTION LOCATION MAP

INDEX NO. L 25
35 11 13 20 00

U.S. PUBLIC LAND SURVEY MONUMENT RECORD

Note: This form is intended and designed to fulfill all requirements of Wisconsin Administrative Code, Chapter A-E 7.08 U.S. Public Land Survey Monument Record (3) (a) (b) (c) (d) (e) (f) (g) (h) (i). An additional sheet may be added if necessary to conform with said requirements.

(a) CORNER LOCATION: WISCORS - Oneida County
 1/4 Cor. of Secs. 13 & 18 N: 120,412.66 USft
 Township 35 North E: 357,655.11 USft
 Range 11&12 East of the 4th P.M. Datum: NAD 1983(2011)
 Town of Schoepke County of Oneida



(b) HISTORY OF ORIGINAL CORNER ESTABLISHMENT

Original Surveyor: Alfred Millard Original Accessories:
 Date of Survey: Commenced: May, 1858 y. birch 14" N25°W, 22 lks.
 Completed: June, 1858 elm 12" S65°E, 18 lks.

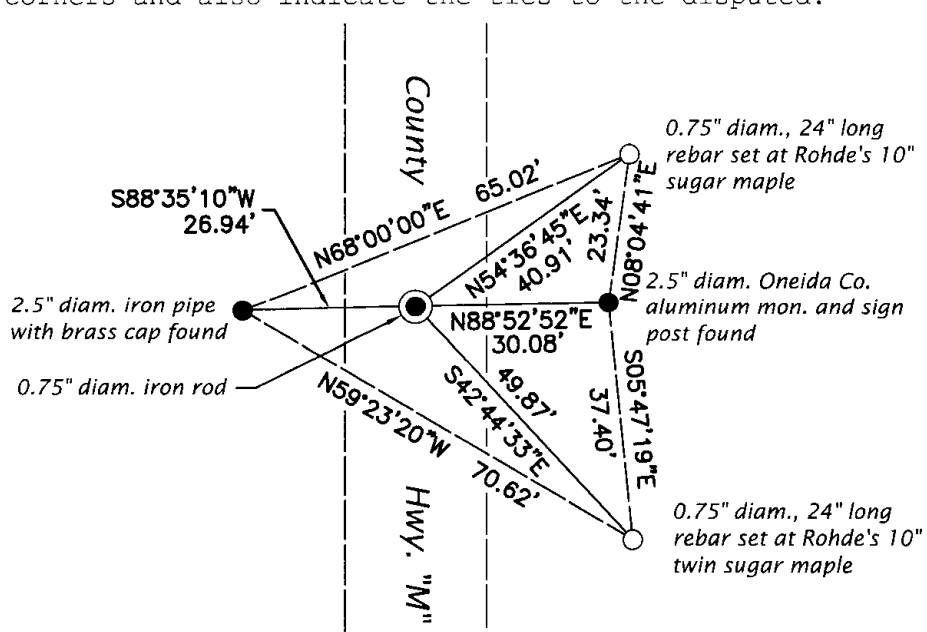
(b) (f) (g) (h) Description of monument found at this corner and if it was accepted, state all evidence (material, testimonial, occupational, plats, records, other monuments) used as a basis for accepting. If not accepted or if nothing was found, state evidence used as basis for establishing location. If re-established through lost corner proportionate methods, indicate all monuments, distances and directions used to establish. Indicate type of monument and sign post found or set.

NOTE: This is a perpetuation of a previous USPLS Monument Record by William C. Rohde, RLS dated January 16, 2000 and filed in the office of the Oneida County Register of Deeds. A complete history of the corner can be found on the previous monument record. I accept the previous location as a true and faithful perpetuation or reestablishment of the original corner location and further perpetuate it as follows.

May 21, 2016: I found and accepted a perpetuation of the record monument, a 0.75" diam. iron rod 2 ft. West of the road centerline. I found or established accessories as shown below.

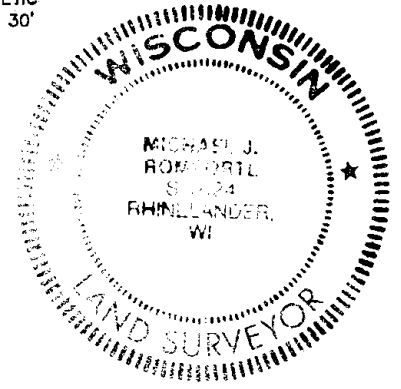
The coordinates shown were derived from two independent RTK observations of the corner point and are referenced to the WISCORS GNSS Network.

(c) (d) (e) Plan view of corner with ties to at least 4 witness monuments. If in disagreement with previously established corner, show the distances between the two corners and also indicate the ties to the disputed.



REGISTER OF DEEDS OFFICE
 ONEIDA COUNTY
 FILED
 DEC 28 2016
 AT _____ O'CLOCK _____ M
 KYLE J. FRANSON
 REGISTER OF DEEDS

MAGNETIC
 1" = 30'



(i) I, Michael J. Romportl, Professional Land Surveyor No. S-1624, hereby certify that the corner location on this record was determined by me or under my direction and control and that this U.S. Public Land Survey Monument Record is correct and complete to the best of my knowledge and belief.

Michael J. Romportl 12/23/2016
 Signature Date