

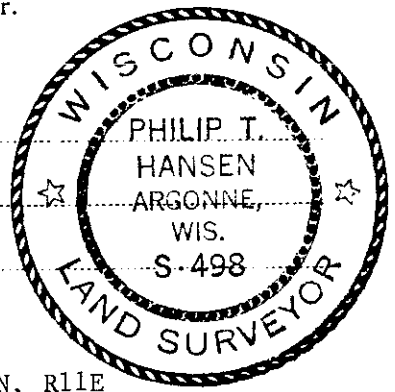
CERTIFIED LAND CORNER RESTORATION

Index No. N-21

State of Wisconsin }  
County of Oneida } ss.

I, Philip T. Hansen, do hereby certify that on the 15th day of April, 19 75, I found evidence of the Section Corner corner of 13-14-23-24 Township 35 North, Range 11 East, Fourth Principal Meridian, as described hereon; and that from this evidence I established a new monument and accessories as described hereon to perpetuate the original location of this corner.

Resident witnesses:



History of original corner establishment:  
Original corner established by Wm. E. Dougherty, Government Deputy Surveyor, in 1859.  
BT's established - aspen 14", S54°E, 95 links and aspen 10", N47½W, 126 links.  
Corner recovered by D.H. Vaughan, County Surveyor, in 1908 from original trees from which he set BT's - spruce 14", bears N82½°E, 27 links and spruce 10", N5°W, 30 links.  
Corner recovered by H.C. Lawrence, Registered Land Surveyor, in 1959. Set new 5" cedar post from which a 16" oak bears S75°W, 50 links and 9" oak bears N58°E, 78 links.

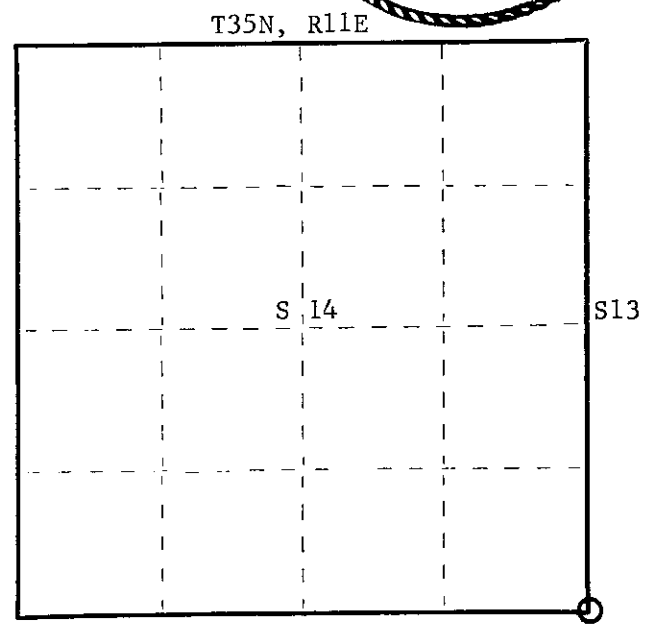
Description of corner evidence found:  
Recovered 5" cedar post squared and scribed S13, S14, S23, and S24 in fair condition. Rock carron had been piled around the post.  
Recovered BT's in good condition - 16" oak, S80°W, 51 links, scribing grown over and 9" oak, N58°E, 78 links, scribing grown over.

Description of monument and accessories I established to perpetuate the original location of this corner.  
Replaced wood stake with 2½" galvanized iron pipe with brass cap stamped -  
Rock carron replaced around new iron pipe.  
No NBT's established.

S498  
T35N, R11E

S14 | S13  
S23 | S24

CPI-1975



○ = Corner monument restored.

Dated at Rhineland, Wis., this 15th day of April, 19 75.

Signature Philip T. Hansen Title Registered Land Surveyor Registration No. S-498  
(County Surveyor, Registered Land Surveyor, or other duly authorized official)

Office of Register of Deeds, County of Oneida, I hereby certify that the within instrument was filed in this office for record on the 1st day of October, 19 75 at 3:00 o'clock P. M.

Tonia Terage Guelch  
(Register of Deeds)

By \_\_\_\_\_ Deputy

FORM 985 H C MILLER CO., MILWAUKEE

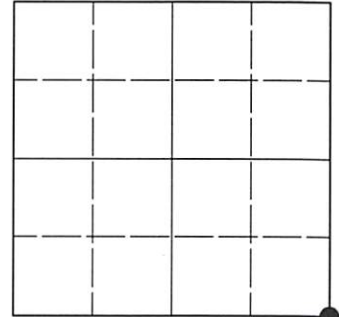
3511/4000

# U.S. PUBLIC LAND SURVEY MONUMENT RECORD

Note: This form is intended and designed to fulfill all requirements of Wisconsin Administrative Code, Chapter A-E 7.08 U.S. Public Land Survey Monument Record (3)(a-i).

(a) CORNER LOCATION  
 Cor. of Secs. 13, 14, 23 & 24  
 Township 35 North  
 Range 11 East of the 4th P.M.  
 Town of Schoepke  
 County of Oneida

WISCRS - Oneida County  
 N: 118,223.98 USft  
 E: 352,534.30 USft  
 Datum: NAD 83(2011) ep. 2010.00  
 GNSS Method: RTN - Direct  
 GNSS Control: WISCORS VRS



Sec. 14, T. 35 N., R. 11 E.

(b)(f)(g)(h) Description of monument found at this corner and if it was accepted, state all evidence (material, testimonial, occupational, plats, records, other monuments) used as a basis for accepting. If not accepted or if nothing was found, state evidence used as basis for establishing location. If re-established through lost corner proportionate methods, indicate all monuments, distances and directions used to establish. Indicate type of monument and sign post found or set.

*This record is a perpetuation of the following land corner document(s):*

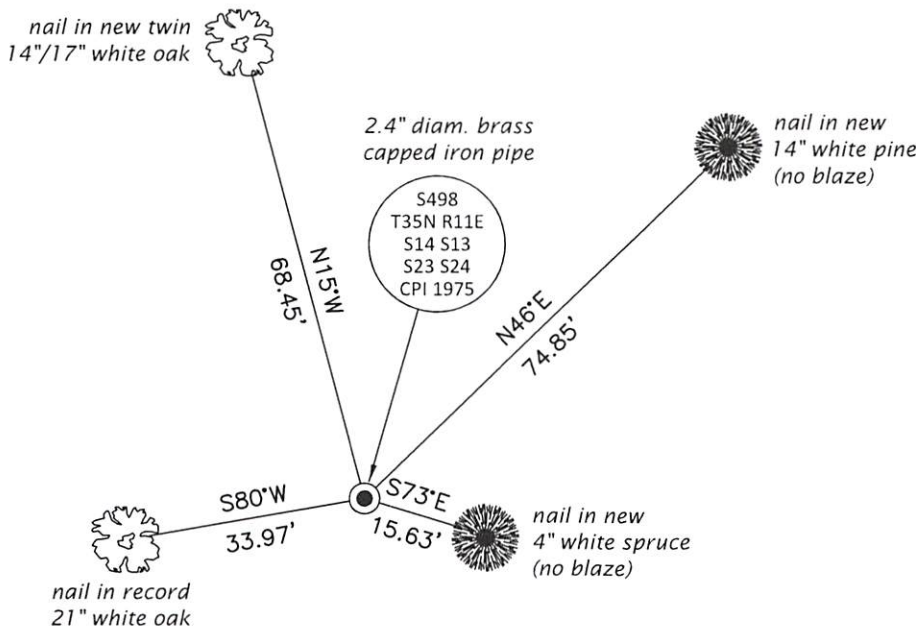
*April 15, 1975: Certified Land Corner Restoration by Philip T. Hansen, filed in Oneida County*

*A complete history of the corner can be found on the previous land corner document(s). I accept the record activity as a true and faithful perpetuation or reestablishment of the original corner location and further perpetuate it as described below.*

*July 16, 2021: I found and accepted the record monument, a 2.4" diam. iron pipe, firmly set, with a 2.4" diam. CPI brass cap projecting 24" above a collar of stone. The record oak bearing tree at N58°E is gone. I found or established accessories as shown below. I found a white vinyl sign post bearing NW, 1.0 ft.*

*The coordinate value shown has been verified by at least one of the following methods: 1) comparison to a previously GNSS determined published value; 2) the value is the average of two or more GNSS observations at a markedly different time; 3) one or more distances were measured back to the GNSS observed corner from temporary GNSS observed offset locations.*

(c)(d)(e) Plan view of corner with ties to at least 4 witness monuments. If in disagreement with previously established corner, show the distances between the two corners and also indicate the ties to the disputed.



REGISTER OF DEEDS OFFICE  
 ONEIDA COUNTY  
 FILED

SEP 27 2021

KYLE J. FRANSON  
 REGISTER OF DEEDS

(i) I, Jeffrey W. Austin, Professional Land Surveyor No. S-1885, hereby certify that the corner location on this record was determined by me or under my direction and control and that this U.S. Public Land Survey Monument Record is correct and complete to the best of my knowledge and belief.

\_\_\_\_\_  
 Signature

SEP 5, 2021  
 \_\_\_\_\_  
 Date