

ONEIDA COUNTY U.S. PUBLIC LAND CORNER RESTORATION

The South Quarter corner of Section 14, T. 35 N., R. 11 E., Oneida County, WI.

Corner was: (check all that apply)

3511140020

- Restored through acceptance of an obliterated evidence location.
- Restored through acceptance of a found perpetuated location
- Determined to be lost and re-established through proportionate methods.
(Show bearings and distances to PLSS corners used for proportioning, and show original distances).
- Restored/recovered/re-established in a location that differs from a previously established position.
(Show difference in plan view below).
- Check here if addition information is shown on the reverse side of this form.

Describe record evidence, recovered physical evidence, occupational evidence, testimonial evidence and all other evidence considered in the recovery/restoration of the corner.

The original corner was established in 1859 by William E. Daugherty, Deputy Surveyor. Original bearing trees: Aspen, 9", N 53° W, 21 links and an aspen, 9", S 70° E, 33 links.

Map L-723 in the Oneida County Surveyors office shows this corner to be 630' feet south of an E-W railroad grade. L-723 also shows distances of 2720' to the West of this corner and 2760' to the East of this corner.

D.H. Vaughan, in 1901, (FB3. Pg. 56-59) set a new post here from both orig. BT's. He described them as nearly defaced and found bottom of old post. He made two new tamarac BT's. Vaughan then used this corner for a subdivision of Section 23. I re-established this corner on an extension of a N-S fenceline running from the S1/4 corner of Section 23, North to just North of the CN 1/16 corner, and 630 feet south of the old railroad grade in Section 14.

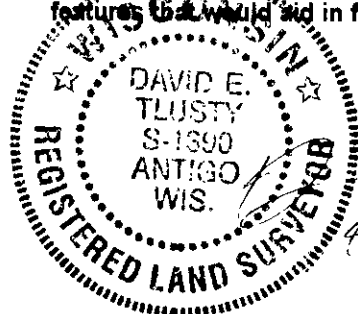
This position fits Vaughans distances as good as can be expected. The location would be the only spot in the area (south side of 20' diameter swamp) that would allow for the tamarac BT's marked by Vaughan.

Physical description of the monument set:

I set a 1 3/8" x 30" iron pipe for the corner.

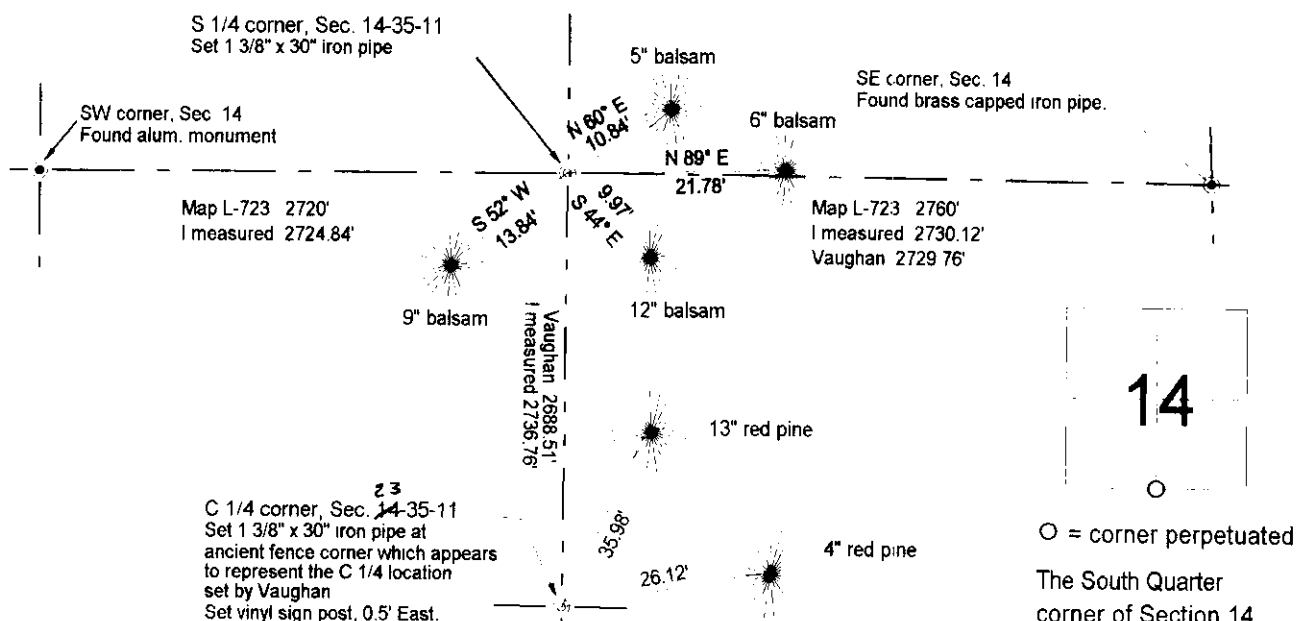
The corner is at the bottom of hillside that rises to the south, and is approx. 40' south of a well used east-west woods road.

Describe the accessories used to perpetuate the corner. Include a plan view drawing and accessories found/set. Describe measuring point on bearing trees. Show any topographic features that would aid in future recovery of the corner.



David E. Tlusty
6/30/00

Tie bearings with hand compass.
BT distances are measured to a 40d spike driven halfway into a low blaze on the left side of each tree, which is also double blazed, facing the corner.



○ = corner perpetuated
The South Quarter corner of Section 14, T. 35 N., R. 11 E., Oneida County, WI

I, David E. Tlusty, Registered Land Surveyor, certify that the corner location on this record was determined by me and that this U.S. Public Land Survey Monument Record is correct to the best of my knowledge and belief

Index No. N19 35-11

3511140020