

CERTIFIED LAND CORNER RESTORATION

Index No. N-5

State of Wisconsin }
County of Oneida } ss.

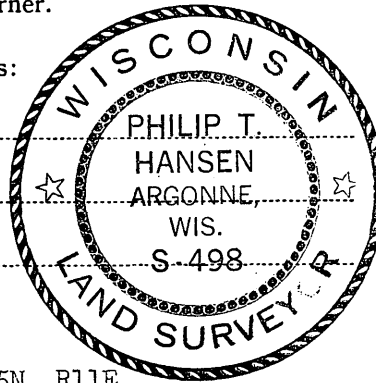
I Philip T. Hansen, do hereby
certify that on the 6th day
of October, 1976, I found
evidence of the Section
corner of S 17, 18, 19, 20
Township 35, North, Range
11 East, Fourth Principal Meridian,
as described hereon; and that from this evidence
I established a new monument and accessories
as described hereon to perpetuate the original
location of this corner.

Resident witnesses:

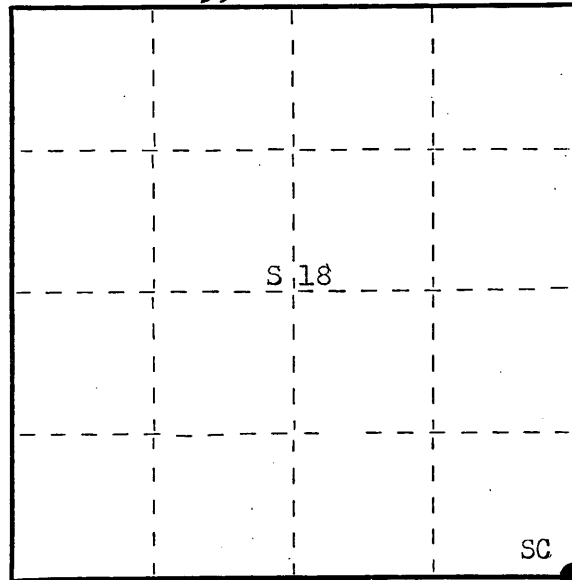
Glen Barker

Jim Claflin

Herb Wagoner



T35N. R11E



○ = Corner monument restored.

History of original corner establishment: Corner established by Wm. E. Dougherty, Deputy Surveyor, in 1859, from which Tamarack 10" bears S 42° W 14 links and Cedar 8" bears N 74° E 6 links. Corner recovered by D.H. Vaughan, County Surveyor. Set new post and marked NBTs - White Birch N 55° E 24 links and Cedar S 50° W 16 links. Corner recovered by H.C. Lawrence, Registered Land Surveyor, in 1953. Found 2½" iron pipe not stamped, some old posts and remains of Vaughan's BTs. Set new cedar post, squared and scribed and marked NBTs - Cedar 5" N 66½° E 27 links and Cedar 6" S 54° E 27 links.

Description of corner evidence found:

Recovered Vaughan's old post scribed S17, S18, S19, S20. Also recovered Lawrence's 6" cedar post scribed S17, S18, S19, S20. Also a 2½" iron pipe with brass cap (not stamped) within a radius of 1 link.

Recovered OBTs - Vaughan's cedar stump S 50° W 16 links, scribing S19, BT still visible. White Birch stump N 55° E 24 links, decayed.

Lawrence's - Cedar 5" (8") N 66½° E (N 68° E) 27 links, scribed S17 NBT. Cedar 6" S 54° E 27 links (S 56° E 20.5 links).

Description of monument and accessories I established to perpetuate the original location of this corner.

We extracted all posts and pipe from ground and reset 2½" iron pipe from calls to Vaughan's BTs, stamped same.

Monument projects 24" above ground.

Marked NBTs - Cedar 6" N 14° E 13.7 links, scribed SC BT.

Cedar 7" S 34° E 52.3 links, scribed SC BT.

Propped old posts beside iron pipe.

S498
T35N. R11E
Sec. 18 | 17
 19 | 20
GPI-1976

Dated at Rhineland, Wis., this 23rd day of November, 1976

Signature Philip T. Hansen Title Registered Land Surveyor Registration No. S-498
(County Surveyor, Registered Land Surveyor, or other duly authorized official)

Office of Register of Deeds, County of Oneida, I hereby certify that the within
instrument was filed in this office for record on the 7th day of December, 1976
at 11:00 o'clock A M.

Doris Verage Kuehn
(Register of Deeds)

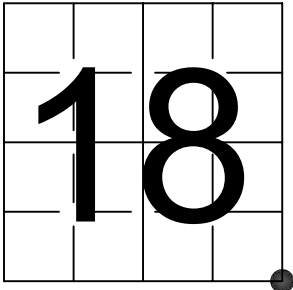
By Joseph M. Boomer Deputy

U S PUBLIC LAND SURVEY MONUMENT RECORD

NOTE: This form is intended and designed to fulfill all requirements of Wisconsin Administrative Code, Chapter A-E 7.08 U.S. Public Land Survey Monument Record (3) (a-i)

A-E 7.08(3)(a) Identity of corner:
SOUTHEAST CORNER SECTION 18,
TOWNSHIP 35 NORTH,
RANGE 11 EAST OF THE 4TH PM,
TOWN OF SCHOEPKE,
COUNTY OF ONEIDA

WISCORS - ONEIDA COUNTY
N: 118,970.494 USft (118,970.41)
E: 330,663.334 USft (330,663.45)
Datum: NAD83 (2011)
GNSS Method RTK
GNSS Control WISCORS VRS



The coordinate value shown has been verified by the average of two or more GPS observations at a markedly different time. Coordinates shown in parenthesis are previously published values.

A-E 7.08(3)(b)

Original Surveyor: William E. Daugherty

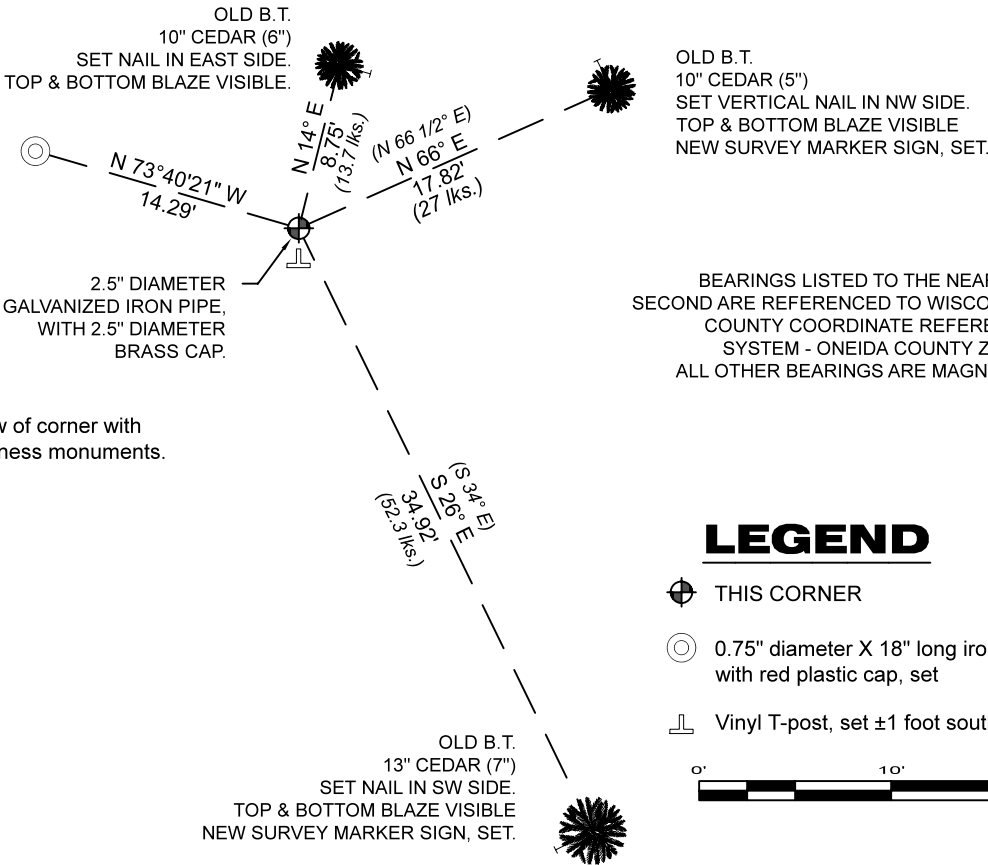
Date of Original Survey Commenced: July 25, 1859
Completed: July 29, 1859

Original Accessories:
Tamarac 10 S 42° W 14 Links
Cedar 8 N 74° E 6 Links

See previous Certified Land Corner Restoration N-5 - November 23, 1976 - Surveyor 498 - Philip T. Hansen - THENCE:

June, 1983 - Surveyor 802 - Jean F. Resvick - indicates this position as "Consolidated Paper Co. monument" on Oneida County Map #L835.
February 25, 1983 - Surveyor 1192 - Lester J. Schmidt - indicates this position as "2 1/2" capped iron pipe" on Oneida County Map #C1246.
August 15, 1984 - Surveyor 1682 - Glen Barker - indicates this position as "2 1/2" iron pipe w/brass cap" on Oneida County Map #B3042.
September 1, 1988 - Surveyor 1731 - Kip W. Soder - indicates this position as "Consolidated Paper Co. monument" on Oneida County Map #B1712.
July 10, 1990 - Surveyor 802 - Jean F. Resvick - indicates this position as "corner of record" on Oneida County Map #C760.
November 18, 1996 - Surveyor 1192 - Lester J. Schmidt - indicates this position as "2 1/2" capped iron pipe" on Oneida County CSM #463126.
September 11, 1997 - Surveyor 2148 - Russell F. Brown - indicates this position as "Consolidated Paper monument" Oneida County Map #A820.
April 11, 1998 - Surveyors 1040 - Robert H. Winat - indicates this position as "C P I brass cap monument" Oneida County Map #C1443.
May 21, 2004 - Surveyor 2468 - Dean Williams - indicates this position as "2.5" B.C.I.P." on Oneida County Map #A1365.
August 26, 2008 - Surveyor 2343 - Kevin P. Bixby - indicates this position as "calculated position" on Oneida County Map #B7067.
September 29, 2011 - Surveyor 2675 - Kevin C. Boyer - indicates this position as "1.5" iron pipe w/brass cap" on TPP 1600-13-00.
December 12, 2012 - Surveyor 2343 - Kevin P. Bixby - indicates this position as "calculated position" on Oneida County Map #B7590.

April 21, 2023 - I found a 2.5" diameter galvanized iron pipe , with a 2.5" diameter brass cap. Monument extends ±24" above grade. I also found 2 of Hansen's reference monuments, and 1 reference monument from prior surveyor. I established 1 new reference monuments as shown below.



A-E 7.08(3)(c)(d) Plan view of corner with references to at least 4 witness monuments.

LEGEND

- THIS CORNER
 - 0.75" diameter X 18" long iron rod, with red plastic cap, set
 - Vinyl T-post, set ±1 foot south of corner
- 0' 10' 20'

A-E 7.08(3)(e) 1859 Surveyor set a post, 1976 Surveyor replaced previous monuments with a 2 1/2" iron pipe, subsequent surveyors found a similar monument. 2023 I found a 2.5" diameter galvanized iron pipe with a 2.5" diameter brass cap stamped to identify corner.

A-E 7.08(3)(f) I accept this monument as a FOUND PERPETUATED LOCATION of the corner.
A-E 7.08(3)(g)(h) This corner was not determined through lost-corner-proportionate methods.

A-E 7.08(3)(i) I, Jeffrey L. DeMuth, Professional Land Surveyor No. S-2656, hereby certify that the corner location on this record was determined by me or under my direction and control, and that this U.S. Public Land Survey Monument Record is correct and complete to the best of my knowledge, and belief.



SIGNATURE

October 6, 2023
DATE