

Stock No. 26273

U. S. PUBLIC LAND SURVEY MONUMENT RECORD

INSTRUCTIONS:

This record shall show the location of the corner and shall include all of the following nine elements (a through i).

- (a) Identify the corner by reference to the U.S. public land survey system.

Meander Corner Between Sections 18 and 19, Township 35 North, Range 11 East, on the east shore of Pelican Lake.

Sec. 19, T 35 N, R 11 E.

Original Survey in 1859 by William E. Daugherty.

West on true line between Sec. 18 & 19.

23.50 ch. Leave Swp. bears N & S.

37.32 ch. Pelican Lake, set meander post

Maple 8", N77E, 44 lks

Maple 8", S69E, 34 lks

D.H. Vaughan Survey in 1921

West between Sec 18 & 19.

33.00 ch. C & NW Railroad

34.00 ch. State Highway

36.65 ch. Set M.C. 25 links East of waterline on shore of Pelican Lake.

Oak 10, N41W, 20 1/2

Oak 14, S31E, 36 3/4

LOCATION SKETCH

(Location of landmark indicated by "M.C.") H.C. Hall Survey in 1930

Run line Between Northeast Corner of Sec 19 and

Meander Corner. True line agrees with East end of iron fence.

Set spike in 10" Y. Pine, bears N11 1/2 E, 22.35 Ft.

D. H. Vaughan's 14" Oak, bears S36E, 36.25 Ft.

Iron Fence Corner Post, bears East, 8 Ft.

- (b) Describe any record evidence, monument evidence, occupational evidence, testimonial evidence or any other material evidence you considered, and whether the monument was found or placed.

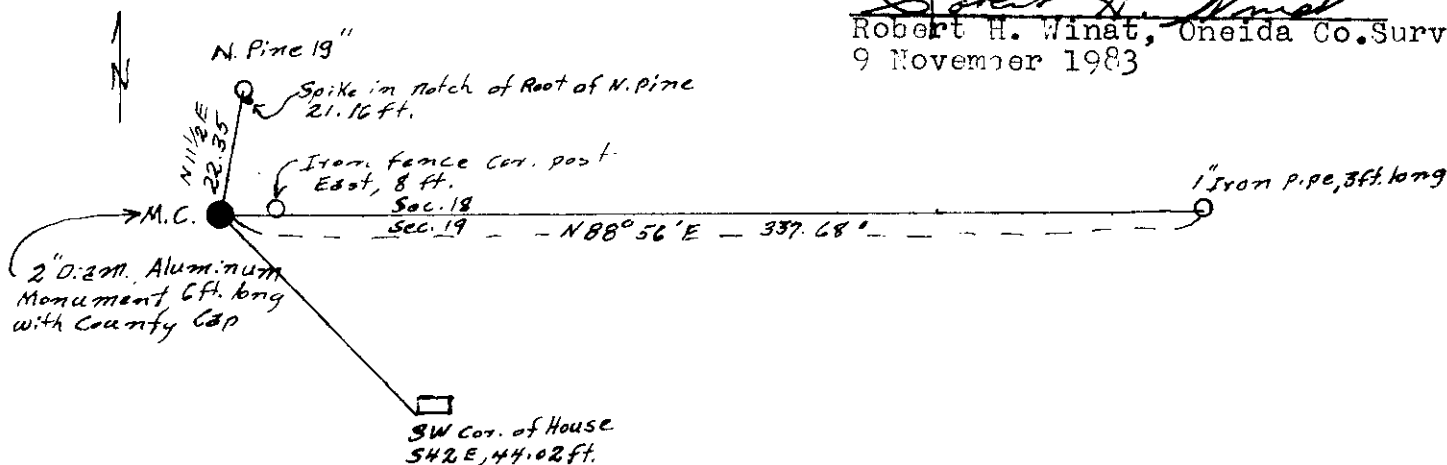
June 14, 1983; I found no evidence of meander corner on lake shore, shoreline has been riprap. Found iron fence corner post. Found Red Pine 19" bearing N 11 1/2 E, 22.35 Ft. from a point 8 Feet west of fence corner. No evidence of Vaughan's Oak found. I set Meander Corner Monument from the Red Pine and fence Corner. From the meander corner as monumented the Northeast corner of Sec. 19, bears N 87° 56' E, 2434.02 Feet. I set a 1" diam. galvanized iron pipe, 36" long at N 87° 56' E, 337.68 feet, on the east Railroad right of way line. At this location I found iron pipe which had been pointed and driven which had been heaved out by the frost.

- (c) In the plan view drawing below, provide reference ties to at least 4 witness monuments, or, if the location is within a municipality, to at least 2 witness monuments. (Witness monuments shall be made of concrete, natural stone, iron or other equally durable material, except wood.) Describe witness monuments.

- (d) Show a plan view drawing depicting the relevant monuments and reference ties which is sufficient in detail to enable accurate relocation of the corner monument if the corner monument is disturbed. Indicate north.

Compared with all record data and accepted as correct.

Robert H. Winat
Robert H. Winat, Oneida Co. Surv.
9 November 1983



351180017

N-3

- (e) Describe any material discrepancy between the location of the corner as restored or reestablished and the location of that corner as previously restored or reestablished by distance and direction. Show the discrepancy on the plan view drawing under (d), above. Show the distances between the corner as previously restored or reestablished and (1) the corner as restored or reestablished, and (2) to at least 2 of the witness monuments shown on the drawing in (d), above.

No discrepancy were found at this time.

- (f) Was the corner restored through acceptance of (1) an obliterated evidence location, or, (2) a found perpetuated location?

Corner was restored from evidence of record.

- (g&h) Was the corner reestablished through lost corner proportionate methods? If so, show the method, including the directions and distances to other public land survey corners used as evidence or used for proportioning in determining the corner location?
no

REGISTER'S OFFICE }
Oneida County, Wis. }

Received for Record the 15 day of

March A.D. 1984 at

11:30 o'clock A. M. and recorded in

Vol. _____ on page _____

Doris Verage Kuehn
Register

Cynthia A. Pitts, Deputy

- (i) I, Jean F. Resvick
(type or print name) certify that the corner location shown on this record was determined by me or under my direction and control and that this U.S. Public Land Survey Monument Record is correct and complete to the best of my knowledge and belief.

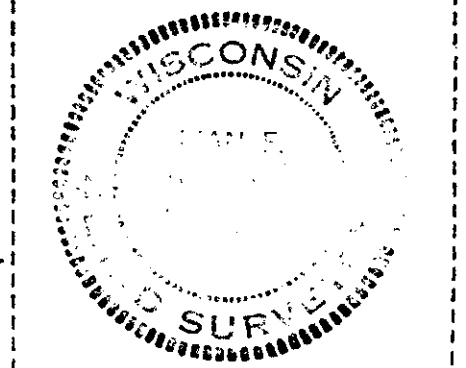
Jean F. Resvick
Signature

S-802

July 13, 1983

Date

Affix Land Surveyor Seal

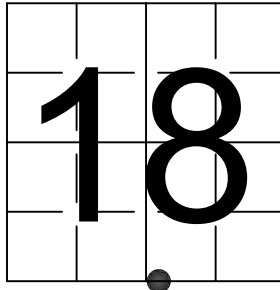


U S PUBLIC LAND SURVEY MONUMENT RECORD

NOTE: This form is intended and designed to fulfill all requirements of Wisconsin Administrative Code, Chapter A-E 7.08 U.S. Public Land Survey Monument Record (3) (a-i)

A-E 7.08(3)(a) Identity of corner:
MEANDER CORNER SOUTH LINE OF
SECTION 18, TOWNSHIP 35 NORTH,
RANGE 11 EAST OF THE 4TH PM,
TOWN OF SCHOEPKE,
COUNTY OF ONEIDA

WISCORS - ONEIDA COUNTY
N: 118,871.624 USft (XXX,XXX.XXX)
E: 328,233.122 USft (XXX,XXX.XXX)
Datum: NAD83 (2011)
GNSS Method RTK
GNSS Control WISCORS VRS



The coordinate value shown has been verified by the average of two or more GPS observations at a markedly different time. Coordinates shown in parenthesis are previously published values.

A-E 7.08(3)(b)

Original Surveyor: William E. Daugherty

Date of Original Survey Commenced: July 25, 1859
Completed: July 29, 1859

Original Accessories:
Maple 8 N 77° E 44 Links
Maple 8 S 69° E 34 Links

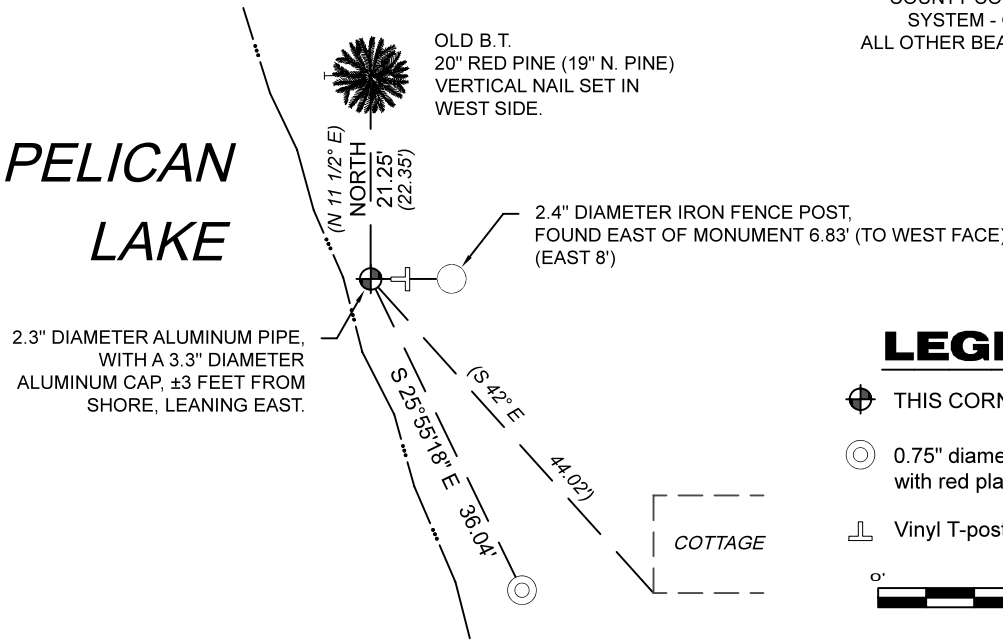
See previous U.S. Public Land Survey Monument Record N-3 - June 14, 1983 - Surveyor 802 - Jean F. Resvick - THENCE:
(NOTE: Prior to 1983, H.C. Hall decided the Meander Corner to be 8 feet west of the iron fence. See Hall Book 7-Page 62)

August 15, 1984 - Surveyor 1682 - Glen Barker - indicates this position as "2 1/4" aluminum pipe w/3 1/4" alloy cap" on Oneida County Map #B3042.
July 10, 1990 - Surveyor 802 - Jean F. Resvick - indicates this position as "corner of record" on Oneida County Map #C760.
September 1, 1988 - Surveyor 1731 - Kip W. Soder - indicates this position as "Oneida County aluminum cap monument" on Oneida County Map #B1712.
July 10, 1990 - Surveyor 802 - Jean F. Resvick - indicates this position as "corner of record" on Oneida County Map #C760.
November 18, 1996 - Surveyor 1192 - Lester J. Schmidt - indicates this position as "Berntsen monument" on Oneida County CSM #463126.
September 11, 1997 - Surveyor 2148 - Russell F. Brown - indicates this position as "2" capped monument" on Oneida County Map #A820.
April 11, 1998 - Surveyor 1040 - Robert H. Winat - indicates this position as "OCS alum. monument" on Oneida County Map #C1443.
March 14, 2003 - Surveyor 1170 - Stuart L. Foltz - indicates this position as "Oneida County aluminum monument" on Loon Crest Resort Condominium.
May 21, 2004 - Surveyor 2468 - Dean Williams - indicates this position as "alum. mon" on Oneida County Map #A1365.
August 04, 2004 - Surveyor 1523 - Todd J. Loftus - indicates this position as "Oneida County monument" on Oneida County Map #B5907.
August 26, 2008 - Surveyor 2343 - Kevin P. Bixby - indicates this position as "Oneida County monument" on Oneida County Map #B7067.
January 3, 2011 - Surveyor 2517 - Charley G. Brinkmeier - indicates this position as "found gov't corner" on Oneida County Map #L2755.
September 29, 2011 - Surveyor 2675 - Kevin C. Boyer - indicates this position as "2.5" iron pipe w/alumn. cap" on TPP 1600-13-00.
December 12, 2012 - Surveyor 2343 - Kevin P. Bixby - indicates this position as "Oneida County monument" on Oneida County Map #B7590.
December 5, 2017 - Surveyor 1523 - Todd J. Loftus - indicates this position as "subdivisional monument of record" on Oneida County Map #A3357.
March 6, 2018 - Surveyor 1523 - Todd J. Loftus - indicates this position as "subdivisional monument of record" on Oneida County Map #A3367.

April 21, 2023 - I found a 2.3" diameter aluminum pipe, with a 3.3" diameter aluminum cap near the shore of Pelican Lake. The monument is leaning severely east from ice ridge, I attempted to straighten the monument but was not successful. I also found 3 of Resvick's reference monuments. I established 1 new reference monuments as shown below.

A-E 7.08(3)(c)(d) Plan view of corner with references to at least 4 witness monuments.

BEARINGS LISTED TO THE NEAREST
SECOND ARE REFERENCED TO WISCONSIN
COUNTY COORDINATE REFERENCE
SYSTEM - ONEIDA COUNTY ZONE.
ALL OTHER BEARINGS ARE MAGNETIC.



A-E 7.08(3)(e) 1859 Surveyor set a post, 1983 Surveyor set a 2" diameter aluminum monument, subsequent surveyors found a similar monument. 2023, I found a 2.3" diameter aluminum pipe with a 3.3" diameter aluminum cap stamped to identify corner.

A-E 7.08(3)(f) I accept this monument as a FOUND PERPETUATED LOCATION of the corner.

A-E 7.08(3)(g)(h) This corner was not determined through lost-corner-proportionate methods.

A-E 7.08(3)(i) I, Jeffrey L. DeMuth, Professional Land Surveyor No. S-2656, hereby certify that the corner location on this record was determined by me or under my direction and control, and that this U.S. Public Land Survey Monument Record is correct and complete to the best of my knowledge, and belief.

SIGNATURE

October 6, 2023

DATE



3511180017