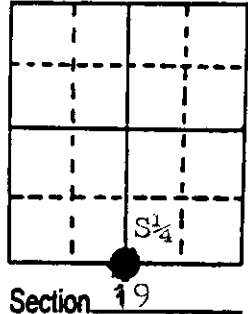


U.S. PUBLIC LAND SURVEY MONUMENT RECORD

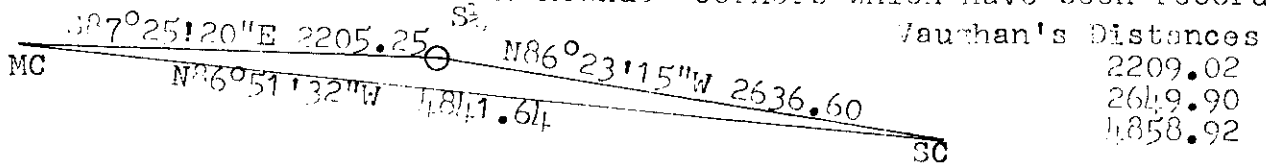
Note: This form is intended and designed to fulfill all requirements of Wisconsin Administrative Code, Chapter A-E 7.08 U.S. Public Land Survey Monument Record (3) (a) (b) (c) (d) (e) (f) (g) (h) (i). An additional sheet may be added if necessary to conform with said requirements.

(a) Corner location: Township 35 North
 Range 11 East/West
 Town/City/Village Schoepke
 County Oneida

REGISTER OF DEEDS OFFICE
 ONEIDA COUNTY, WIS.
FILED
 JUL 11 1991
 At O'Clock M
THOMAS H. LEIGHTON
 REGISTER OF DEEDS

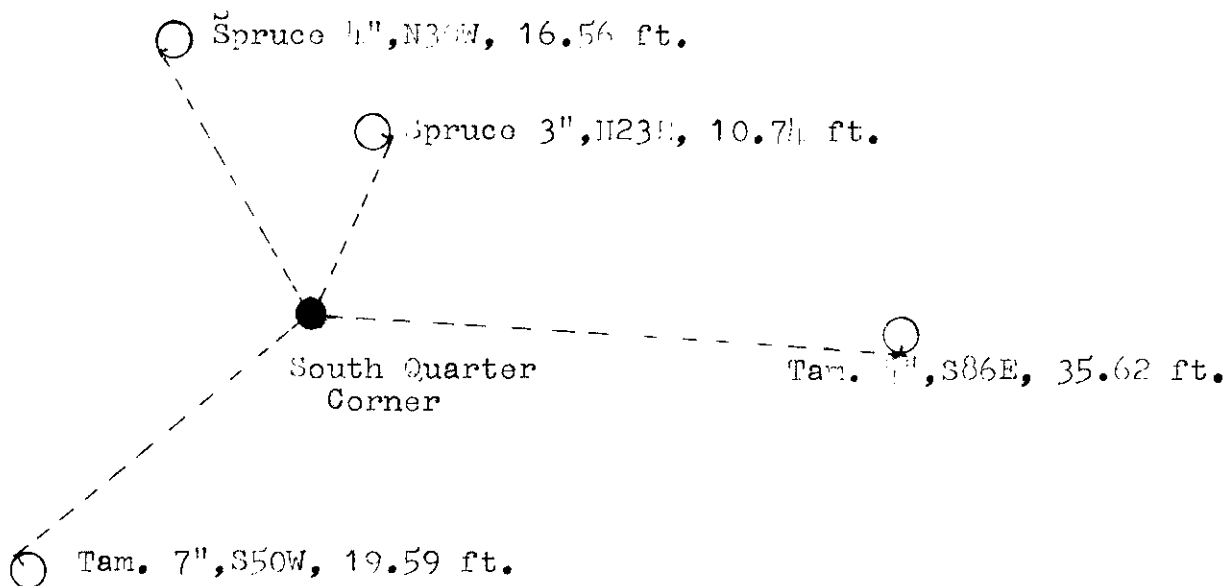


(b) (f) (g) (h) Description of monument found at this corner and if it was accepted, state all evidence (material, testimonial, occupational, plats, records, other monuments) used as a basis for accepting. If not accepted or if nothing was found, state evidence used as basis for establishing location. If reestablished through lost corner proportionate methods, indicate all monuments, distances and directions used to establish. Indicate type of monument found or set and sign post. Original survey in 1859 by William E. Daugherty. West on true line, 40 Ch. Set $\frac{1}{4}$ post, Tam. 8", S13E, 73 lks.: Tam. 6", N8W, 50 lks.: 73.34 Ch. set MC. D.H. Vaughan in 1921 proportioned 10.15 Ch. Spruce 5" N64 $\frac{1}{2}$ W, : Tam. 5" S15E, 5 $\frac{1}{2}$ lks. On May 29, 1990 I found $\frac{1}{4}$ " x $\frac{1}{4}$ " scribed cedar post and 1" x $\frac{1}{8}$ " iron pipe on the NE side wired to the post. This position was then located in relation to the section and Meander corners which have been recorded.

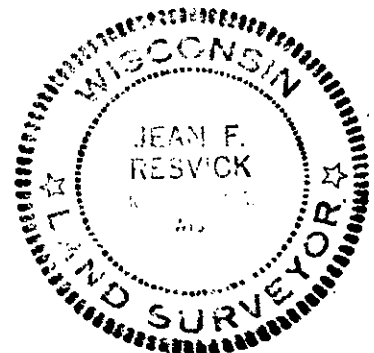


I replaced the scribed post with the 1" x $\frac{1}{8}$ " iron pipe driven to six inches above ground. I then rolled the flanges up on a 30" Aluminum monument and set it on top of the iron pipe with the Oneida County Cap stamped to identify corner. Set White sign post and $\frac{1}{4}$ " x $\frac{1}{4}$ " post found along side of monument. Blazed and scribed bearing trees and set spikes on the side of the trees as indicated on sketch.

(c) (d) (e) Plan view of corner with ties to at least 4 witness monuments. If in disagreement with previously established corner, show the distances between the two corners and also indicate the ties to the disputed corner.



(i) I, Jean F. Resvick, RLS S-802
 (type or print name) certify that the corner location on this record was determined by me or under my direction and control and that this U.S. Public Land Survey Monument Record is correct and complete to the best of my knowledge and belief.



Jean F. Resvick
 Signature Date

Stamp
 3511190020

Index No. R-3