

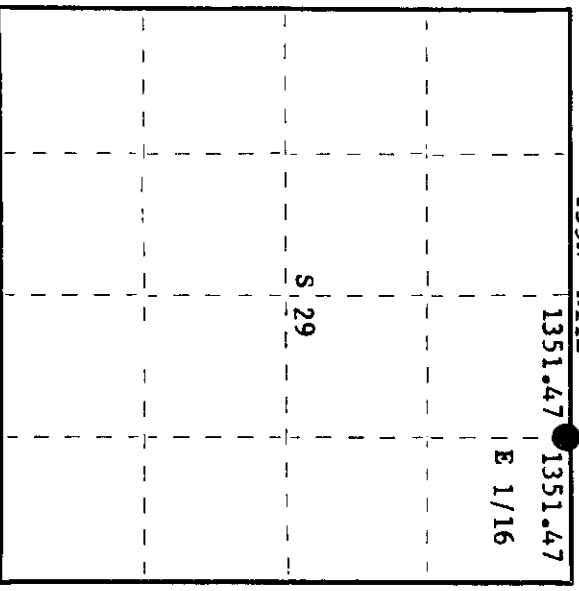
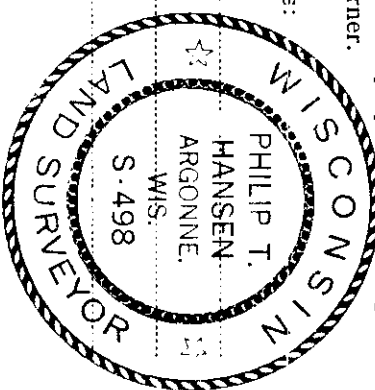
CERTIFIED LAND CORNER RESTORATION

Index No. **E-8**

State of Wisconsin } ss.
County of Oneida

I Phillip T. Hansen, do hereby certify that on the 27th day of July, 1978, I ~~restored~~ re-established the E 1/16 corner of Section 20 & 29 Township 35 North, Range 11 East, Fourth Principal Meridian, as described hereon; and that from this evidence I established a new monument and accessories as described hereon to perpetuate the original location of this corner.

Resident witnesses:
Jim Clafflin
Herb Wagoner
John Masbaum



○ = Corner monument restored.

History of original corner establishment:
No records available on any previous survey.

Description of corner evidence found:
No evidence of any corner recovered.
Corner established by traverse and computation. Set by single proportion.
Ran traverse between previously established 1/4 corner between section 20 & 29, and section corner 20, 21, 28 & 29. Computed bearing N 89° 03' 12" E distance 2702.94'.
Set E 1/16 corner at 1351.47' intermediate.

Description of monument and accessories I established to perpetuate the original location of this corner.
Corner falls at a large immovable boulder. Marked a 2" x 2" X on boulder for true corner. Cap stamped:
Set a 1 1/2" iron pipe with 2" brass cap 5' west for a witness corner.
Marked NBT's to true corner -
Sugar 7" N32°W 8.45 feet
Sugar 6" S41°W 10.41 feet
both scribed 1/16 BT
S498
T35N R11E
S 1/16
S 29
CPI-1978

Dated at Rhineland Wis. this 7th day of August, 1978

Signature Phillip T. Hansen Title Registered Land Surveyor Registration No. S-498
(County Surveyor, Registered Land Surveyor, or other duly authorized official)

Office of Register of Deeds, County of Oneida
at 100 o'clock P. M. 21st day of August, 1978
I hereby certify that the within

Dorcas Venner Kuehn
(Register of Deeds)

By _____ Deputy

3511200010