

CERTIFIED LAND CORNER RESTORATION

Index No. **Q-9**

State of Wisconsin }
County of Oneida } ss.

History of original corner establishment:
No records of any previous survey.

I Philip T. Hansen, do hereby
certify that on the 28th day
of June, 1978, I found
~~established~~ established the S 1/16
~~corner of sections 20 & 21~~
corner of sections 20 & 21

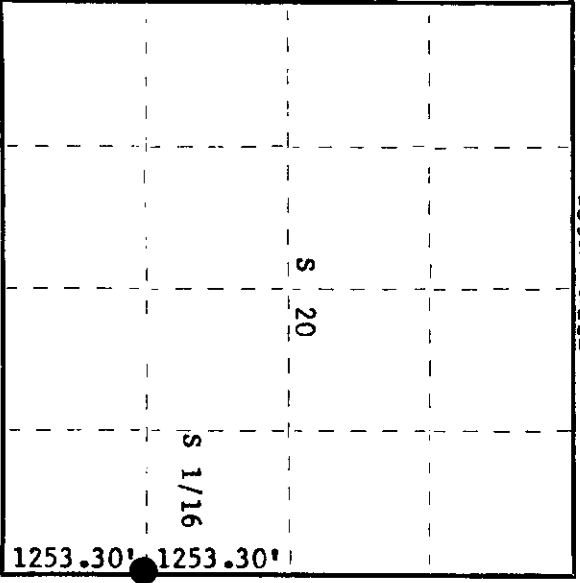
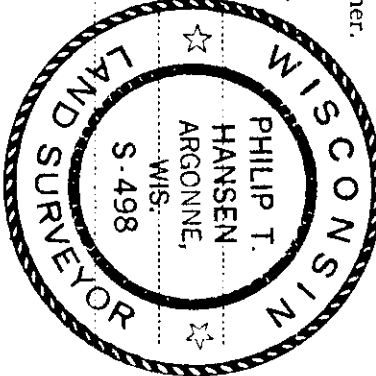
of 11 East, Township 35,
North, Range 11 East,
Fourth Principal Meridian,
as described hereon; and that from this evidence
I established a new monument and accessories
as described hereon to perpetuate the original
location of this corner.

Resident witnesses:

Jim Clafin

Herb Wagoner

John Masbaum



○ = Corner monument restored.

3511201000

Description of corner evidence found:
No evidence of any corner recovered.

Corner established by traverse and computation. Ran traverse from section corner 16, 17, 20, 21 to section corner 20, 21, 28, 29. Computed distance 5013.20 feet. Set 1/4 corner at 2506.60 feet at bearing S 1° 04' 43" East. Set S 1/16 corner at 1253.30 feet intermediate between 1/4 corner and section corner 20, 21, 28 & 29 bearing S 1° 04' 43" E.

Description of monument and accessories I established to perpetuate the original location of this corner.

Set 1 1/2" iron pipe with 2" brass cap projecting 28" above ground, cap stamped:
Marked NBT's -
Maple 6" N14° E, 18.48 feet, scribed 1/16 BT.
Maple 7" S4° E, 13.51 feet, scribed 1/16 BT.

S498
T35N R11E
S 1/16 20 + 21
CPI-1978

Dated at Rhinelander, Wis., this 5th day of July, 1978.
Signature Philip T. Hansen Title Registered Land Surveyor Registration No. S-498
(County Surveyor, Registered Land Surveyor, or other duly authorized official)

Office of Register of Deeds, County of Oneida.
Instrument was filed in this office for record on the 17th day of July, 1978 at 10:00 o'clock A. M.

Dore Verage Fuchs
(Register of Deeds)

By: _____ Deputy