

CERTIFIED LAND CORNER RESTORATION

Index No. **R 13**

State of Wisconsin

County of Oneida } ss.

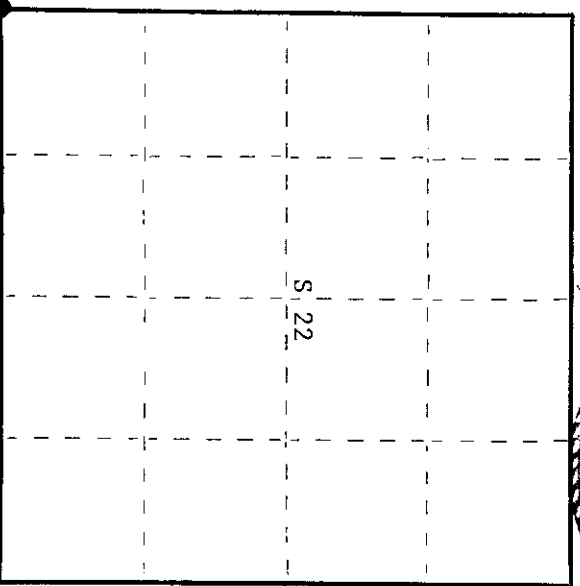
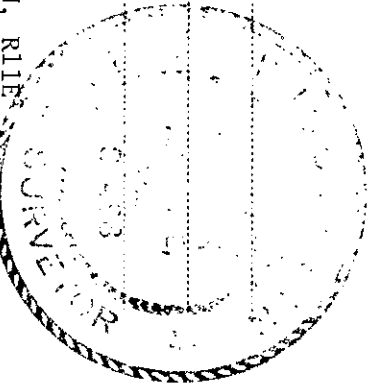
I Phillip T. Hansen do hereby certify that on the 26th day of August, 1975, I found evidence of the Section corner of Sections 21, 22, 27, & 28 Township 35, North, Range 11 East, Fourth Principal Meridian, as described hereon; and that from this evidence I established a new monument and accessories as described hereon to perpetuate the original location of this corner.

Resident witnesses:

Glen Barker

Jim Ciaffin

T35N, R11E



○ = Corner monument restored.

CERTIFIED LAND CORNER RESTORATION

History of original corner establishment:

Corner established by Wm. E. Dougherty, Government Deputy Surveyor, in 1859 from which white pine 12" bears N41°W, 13 links and spruce 10" bears S85°W, 11 links. Corner searched for but was not found by H.C. Lawrence, Registered Land Surveyor, in 1958. He ran North 120' West, along old road from 1/4 corner, a distance of 39.71 chains. The 39.71 chains equals distance from recovered 1/4 corner South to section corner. Set 8" cedar post 18 links West of center line of road which is believed to have been built on line and construction obliterated the corner and bearing trees. Marked jack pine 6", S66°E, 30 links, scribed bearing tree.

Description of corner evidence found:

Recovered 6" cedar post, squared and scribed S21, S28, S27, and S22, in good condition. This is a witness corner which bears 18 links West of true corner at center line of road. Recovered OBT jack pine 6" (7"), S66°E, 30 links, scribed S27 BT.

Description of monument and accessories: I established to perpetuate the original location of this corner.

Replaced cedar post with 2 1/2" iron pipe with brass cap stamped - S 498
 Drove a 1 1/2" x 18" iron pipe flush with ground in old road bed for true corner T35N, R11E
 NBT's - Black spruce 8" S42°E 68.8 links scribed SC BT S21 S22 WC
 White spruce S30°W 82.5 links scribed SC BT S28 S27
 OBT and NBT's are measured from true corner. E 35 links

Dated at Rhineland Wis. this 18th day of September, 1975

Signature Phillip T. Hansen Title Registered Land Surveyor Registration No. S-498
 (County Surveyor, Registered Land Surveyor, or other duly authorized official)

Office of Register of Deeds, County of Oneida
 Instrument was filed in this office for record on the 19th day of November 1975
 at 10:00 o'clock A.M.

By: Doris Verage Kuehn Deputy
 (Register of Deeds)

3511210000

CERTIFIED LAND CORNER RESTORATION

Index No. R-13

State of Wisconsin

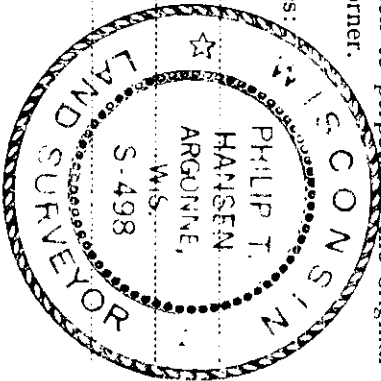
County of Oneida } ss.

I, Phillip T. Hansen, do hereby certify that on the 26th day of August, 19 75, I found evidence of the Section corner of Sections 21, 22, 27 and 28 Township 35, North, Range 11 East, Fourth Principal Meridian, as described hereon; and that from this evidence I established a new monument and accessories as described hereon to perpetuate the original location of this corner.

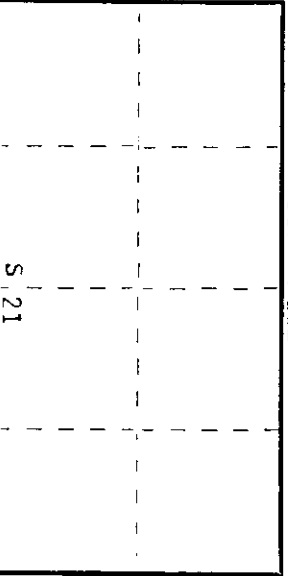
Resident witnesses:

Glen Barker

Jim Clefflin



T35N R11E



○ = Corner monument restored.

History of original corner establishment:

Original corner established by Wm. E. Dougherty, Deputy Surveyor, in 1859, from which white pine 12" bears N41°W 13 links and Spruce 10" bears S85°E 11 links. H.C. Lawrence, Registered Land Surveyor, ran line north from 1/4 corner at 39.71 - he was 18 links west of point in centerline of road. No evidence of any corner or 27's. He set an 8" cedar post for witness post 18 links west of assumed corner. Marked a jack pine 6" S 66° E, 30 links from point in road.

Description of corner evidence found:

Recovered Lawrence's 6" squared cedar post, scribed S21, S28, S27, S22, in good condition. This is a witness corner which bears 18 links west of true corner. Recovered Jack Pine 6" (7") S66°E 30 links, scribed S27 PT.

Description of monument and accessories I established to perpetuate the original location of this corner.

Set a 2-1/2" iron pipe with brass cap for witness corner, 35 links west of true corner 17 links west of H.C. Lawrence's post.
 Drove a 1-1/2" x 18" iron pipe at true corner, flush with ground.
 Marked NPT's from true corner, P. Spruce 8" S42°E, 68.8 links, scribed SC BT;
 W. Spruce S30°W, 82.5 links, scribed SC BT. Cap stamped:

T35N R11E
 21 22
 28 27
 E 35 lks
 S498

Dated at Rhineland, Wis., this 15th day of October, 19 79.

Signature Phillip T. Hansen Title Registered Land Surveyor Registration No. S-498
 County Surveyor, Registered Land Surveyor, or other duly authorized official

Office of Register of Deeds, County of Oneida at 10:15 o'clock A M. 30th day of July, 19 80
 I hereby certify that the within instrument was filed in this office for record on the

Terrie Lange Tucker
 (Register of Deeds)

By: _____ Deputy

3511210000

CERTIFIED LAND CORNER RESTORATION

Index No. R-13

State of Wisconsin

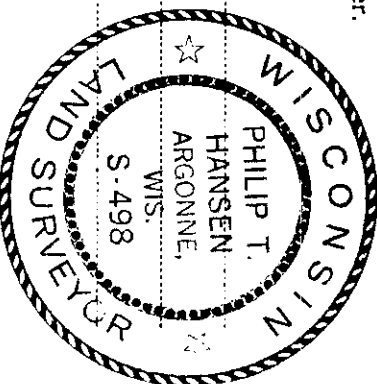
County of Oneida } ss.

I Philip T. Hansen, do hereby certify that on the 26th day of August, 1979, I found evidence of the Section corner of Sections 21, 22, 27 & 28 Township 35, North, Range 11 East, Fourth Principal Meridian, as described hereon; and that from this evidence I established a new monument and accessories as described hereon to perpetuate the original location of this corner.

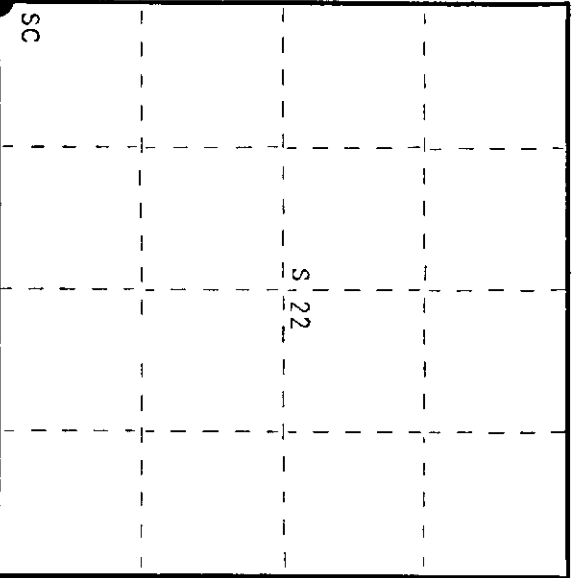
Resident witnesses:

Glen Barker

Jim Claffin



T35N R11E



○ = Corner monument restored.

History of original corner establishment:

Original corner established by Wm. E. Dougherty, Deputy Surveyor, in 1859 from which Spruce 10" bears S85°E 11 links and White Pine 12" bears N41°W 13 links.

Corner re-established by H.C. Lawrence, Registered Land Surveyor. He extended his line north from the 1/4 corner south, a distance of 39.71 chains which was his distance from section corner south of 1/4 corner. Set an 8" cedar post for witness post 18 links east. Marked NPT - Jack Pine S66°E 30 links from true corner.

Description of corner evidence found:

Recovered 6" cedar post, squared and scribed S21, 28, 27, 22 in good condition. This is a witness post that bears west 18 links from true corner. Recovered CRT - Jack Pine 6" (7") S66°E 30 links, scribed S27 RT. (measurements from true corner)

SEE ALSO CORNER FORM FILLED BY WILKINER 2/16/98. mqr

Description of monument and accessories I established to perpetuate the original location of this corner.

Drove a 1-1/2" x 18" iron pipe, flush with ground, for corner.

Set a 2-1/2" iron pipe with brass cap for witness corner 35 links west of true corner and 17 links west of Lawrence's post. Cap stamped:

Marked NPT's to true corner -
 B. Spruce 8" S42°E 68.8 links scribed SC-RT.
 W. Spruce 330" S82.5 links, scribed SC-BT.
 T35N R11E
 Sec. 21 22 W.C.
 28 27
 E 35 lks.
 S498

Dated at Rhineland, Wis., this 2nd day of October, 1979

Signature Philip Hansen, Title Registered Land Surveyor Registration No. S-498
 (County Surveyor, Registered Land Surveyor, or other duly authorized official)

Office of Register of Deeds, County of Oneida. I hereby certify that the within instrument was filed in this office for record on the 9th day of October, 1979 at 2:45 o'clock M.

Louis George Kuehn
 (Register of Deeds)

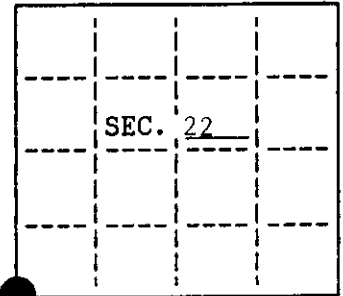
By _____ Deputy

3511210000

U.S. PUBLIC LAND SURVEY MONUMENT RECORD

Note: This form is intended and designed to fulfill all requirements of Wisconsin Administrative Code, Chapter A-8 7.08 U.S. Public Land Survey Monument Record (3)(a)(b)(c)(d)(e)(f)(g)(h)(i). An additional sheet may be added if necessary to conform with said requirements.

(a) CORNER LOCATION: State Plane Coordinates
 SW corner of Sec. 22 X _____
 Township 35 North Y _____
 Range 11 East Datum Base _____
 Town/Range Schoepke County of Oneida



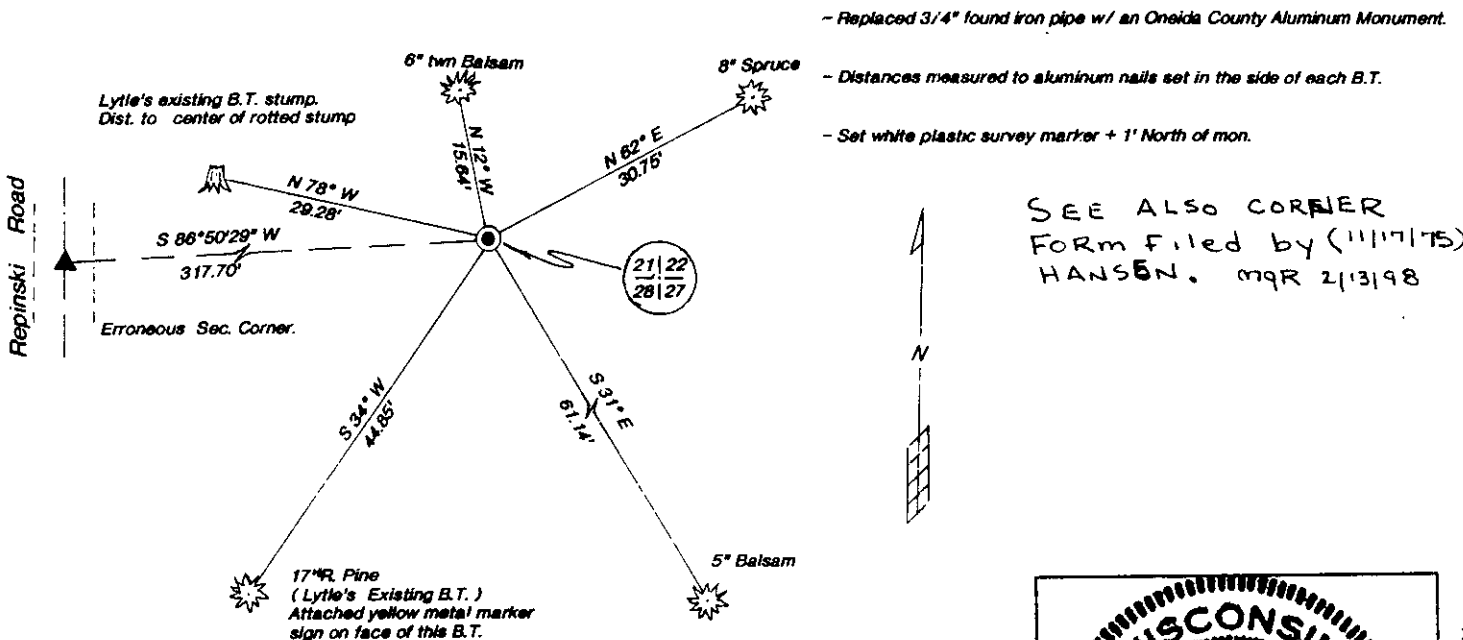
(b) HISTORY OF ORIGINAL CORNER ESTABLISHMENT
 Original Surveyor: William Dougherty
 Date of Survey: Commenced 1859
 Completed 1859

Original B.T.'S
 W. Pine 12" N41°W, 13 lks
 Spruce 10" S85°W, 11 lks
 COR 1 D
 43511210000

(b)(f)(g)(h) Description of monument found at this corner and if it was accepted, state all evidence (material, testimonial, occupational, plats, records, other monuments) used as a basis for accepting. If not accepted or if nothing was found, state evidence used as basis for establishing location. If reestablished through lost corner proportionate methods, indicate all monuments, distances and directions used to establish. Indicate type of monument and sign post found or set.

- 1859 - Deputy Surveyor, William Doughty set wood post for Section corner
- 1946 - A.J. Lytle found original northwest bearing tree stump and reset corner based on stump. New BT's: 7" Fir, N81°W, 44 lks(29.04'); 10" Y. Pine, S31°W, 68 lks(44.88').
- 1979 - Philip Hansen set an erroneous 1 1/2" x 18" iron pipe ±318' west of Lytle's original corner location. (See U.S.P.L.S. monument record)
- 1997 - I found a 3/4" iron pipe with an existing 17" blazed Red Pine B.T. matching Lytle's call and his Fir, now a cut-off stump. I also found remains of Dougherty's original Pine B.T. from which Lytle reset the Section corner. I accept this as being in the original position.

(c)(d)(e) Plan view of corner with ties to at least 4 witness monuments. If in disagreement with previously established corner, show the distances between the two corners and also indicate the ties to the disputed.



SEE ALSO CORNER FORM FILED BY (1117175) HANSEN. mqr 2/13/98



INDEX NO. R 13

(i) I, Charles E. Winkler, #S-1431 hereby certify that the corner location on this record was determined by me or under my direction and control and that this U.S. Public Land Survey Monument Record is correct and complete to the best of my knowledge and belief.

Charles E. Winkler / 1/21/98
 Signature Foltz and Associates, Inc. Date

3511210000