

CERTIFIED LAND CORNER RESTORATION

Index No. **P-13**

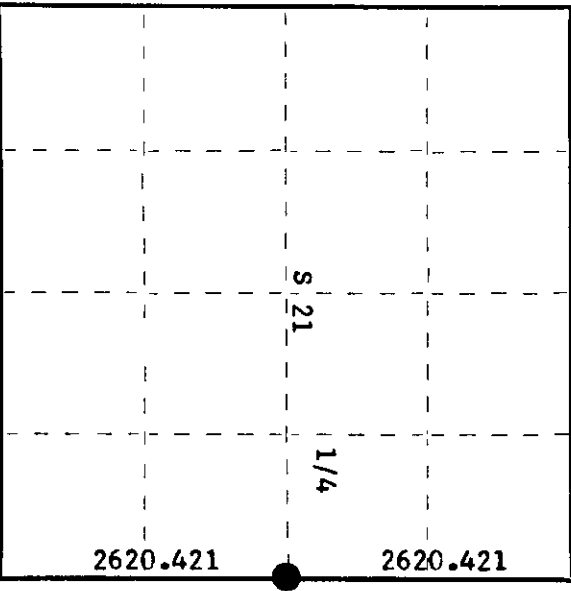
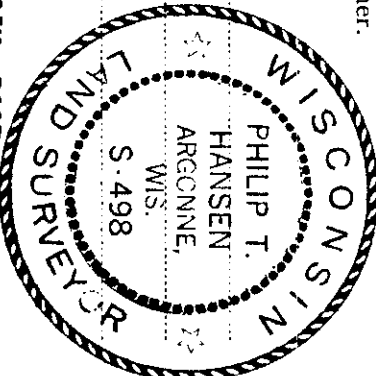
State of Wisconsin } ss.
County of Oneida

I Phillip T. Hansen, do hereby
certify that on the 27th day
of June, 1978, I ~~found~~
~~established~~ restored the Quarter
corner of Sections 21 & 22
Township 35, North, Range
11 East, Fourth Principal Meridian,

as described hereon; and that from this evidence
I established a new monument and accessories
as described hereon to perpetuate the original
location of this corner.

Resident witnesses:

- Glen Barker
- Jim Claffin
- Herb Wagoner
- John Masbaum



History of original corner establishment:
Original corner established by Wm. E. Dougherty, Deputy Surveyor, in 1859 from which
white pine 10" bears S 87° E, 9 links and aspen 10" bears N 60° W, 26 links.
No records of any subsequent survey.

SEE ALSO CORNER
FORM FILED BY
WORKER 2/16/98.
mqc

Description of corner evidence found:

No evidence of any corner recovered.
Corner established by traverse and computation. Ran traverse from previously established
section corner 21, 22, 27, 28 to section corner 15, 16, 21, 22.
Computed distance 5240.842 feet at bearing S 1° 00' 31" W.
Set 1/4 corner at 2620.421 feet intermediate.

Description of monument and accessories I established to perpetuate the original location of this corner.

Set 2 1/2" Berntsen A-1 Federal Monument, aluminum with magnet in cap and base. (Oneida County),
12" below the surface of ground. Corner sets in the center of field. Cap stamped:
Marked NBT's - White Birch 12" S14° 15' 12" W, 284.559 feet T35N R11E
Red Pine 6" S86° 46' 57" W, 283.571 feet 1/4 21 22
White Birch 10" N33° 34' 29" E, 199.176 feet
White Pine 7" S70° 48' 51" E, 284.982 feet
all BT's scribed 1/4 BT S498 - 1978

Dated at Rhineland, Wis., this 5th day of July, 1978

Signature: Phillip T. Hansen Title: Registered Land Surveyor Registration No. S-498
(County Surveyor, Registered Land Surveyor, or other duly authorized official)

Office of Register of Deeds, County of Oneida
Instrument was filed in this office for record on the 14th day of August, 1978
at 12:45 o'clock P. M.

Doris Terage Kuehn
(Register of Deeds)

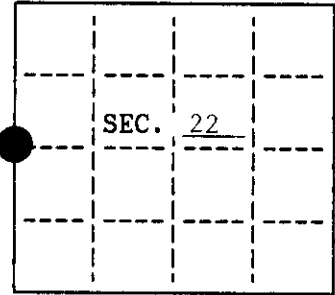
By: _____ Deputy

3511212000

U. S. PUBLIC LAND SURVEY MONUMENT RECORD

Note: This form is intended and designed to fulfill all requirements of Wisconsin Administrative Code, Chapter A-E 7.08 U.S. Public Land Survey Monument Record (3)(a)(b)(c)(d)(e)(f)(g)(h)(i). An additional sheet may be added if necessary to conform with said requirements.

(a) CORNER LOCATION: State Plane Coordinates
 W $\frac{1}{4}$ corner of Sec. 22 X -----
 Township 35 North Y -----
 Range 11 East Datum Base -----
 Town/City Schoepke County of Oneida

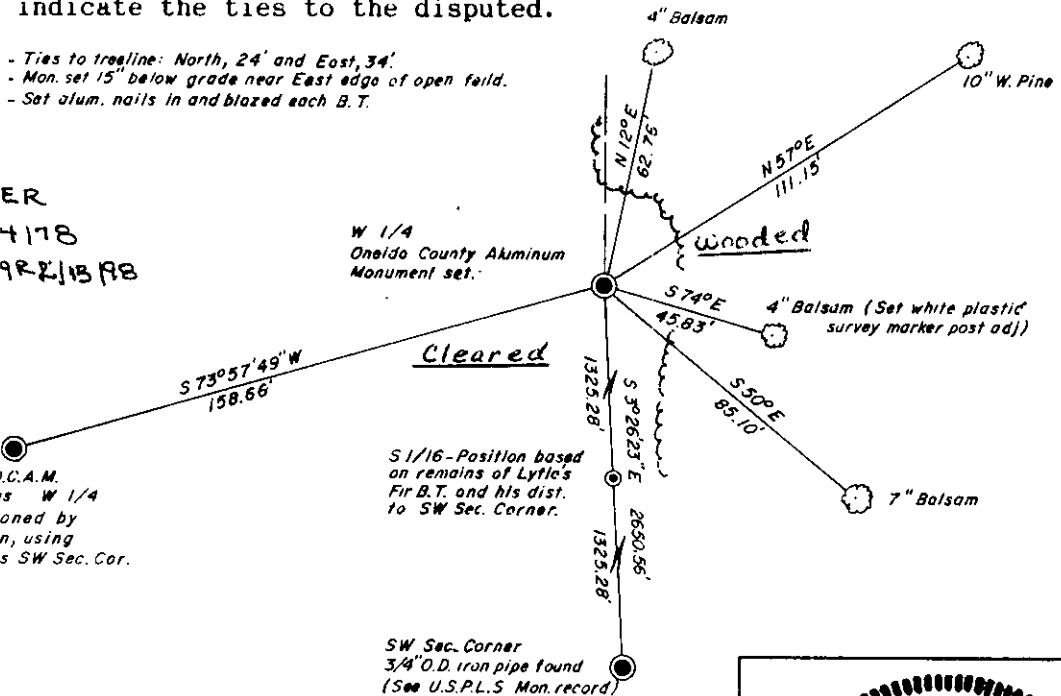


(b) HISTORY OF ORIGINAL CORNER ESTABLISHMENT
 Original Surveyor: William Dougherty Original B.T.'s
 Date of Survey: Commenced July, 1859 10" W. Pine S87°E 9 lks 4351121200
 Completed July, 1859 10" Aspen N60°W 26 lks

(b)(f)(g)(h) Description of monument found at this corner and if it was accepted, state all evidence (material, testimonial, occupational, plats, records, other monuments) used as a basis for accepting. If not accepted or if nothing was found, state evidence used as basis for establishing location. If reestablished through lost corner proportionate methods, indicate all monuments, distances and directions used to establish. Indicate type of monument and sign post found or set.

- 1859 - Deputy Surveyor William Dougherty set wood post for W $\frac{1}{4}$.
- 1946 - A. J. Lytle did not find W $\frac{1}{4}$, but did find original W. Pine stump and reset corner with an iron pipe based on stump. He also made new BT's: White Pine stump, N33°E, 74 lks; 6" Fir, N81°30'E, 140 lks; 8" Birch, S56°30'E, 78 lks. Lytle then set S 1/16 on West line of Section 22 halfway between original W $\frac{1}{4}$ and SW Section corner. Made B.T.: 12" Fir, N82°E, 104 lks.
- 1997 - I could not find any original evidence of Lytle's W $\frac{1}{4}$. I did find Philip Hansen's erroneous W $\frac{1}{4}$ set in 1978 based on erroneous SW section corner. I found Lytle's SW section corner (see U.S.P.L.S. Monument Record) and his Fir BT (badly rotted stump) at the S 1/16 on the south side of Highway "B". I reset S 1/16 based on Lytle's distance from the stump and distance from the SW section corner. I then reset W $\frac{1}{4}$ by doubling through the SW section corner and S 1/16 corner.

(c)(d)(e) Plan view of corner with ties to at least 4 witness monuments. If in disagreement with previously established corner, show the distances between the two corners and also indicate the ties to the disputed.



See ALSO CORNER
 Form Filed 8/14/78
 by HANSEN. MAR 21 1978

O.C.A.M.
 Erroneous W 1/4
 proportioned by
 P. Hansen, using
 erroneous SW Sec. Cor.

(i) I, Charles E. Winkler, #S-1431 hereby certify that the corner location on this record was determined by me or under my direction and control and that this U.S. Public Land Survey Monument Record is correct and complete to the best of my knowledge and belief.

Signature Charles E. Winkler Date 1/21/98
 Foltz and Associates, Inc.



INDEX NO. P-13