

CERTIFIED LAND CORNER RESTORATION

Index No. 0-12

State of Wisconsin }  
County of Oneida } ss.

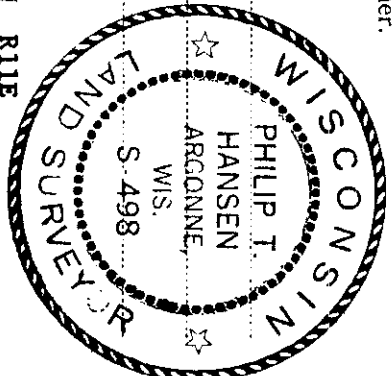
History of original corner establishment:  
**No records of any previous survey.**

I Philip T. Hansen, do hereby  
certify that on the 28th day  
established June 19 78, ~~1980~~  
~~established~~ the NE 1/16  
corner of Section 21

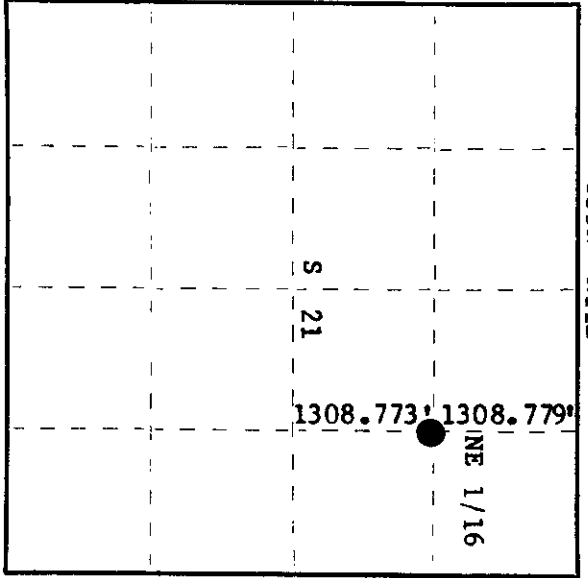
Township 35, North, Range  
11 East, Fourth Principal Meridian,  
as described hereon; and that from this evidence  
I established a new monument and accessories  
as described hereon to perpetuate the original  
location of this corner.

Resident witnesses:

Glen Barker  
Jim Clafin  
Herb Wagoner  
John Masbaum



T35N R11E



○ = Corner monument restored.

Description of corner evidence found:

**No evidence of any corner recovered.**  
**Corner established by traverse and computation. Computed line between E 1/16 and EC 1/16 is 2607.552 feet at bearing S 0° 30' 04" E. Computed location of NE 1/16 is 1308.779' S 0° 30' 04" E of E 1/16 corner and 1308.773' N 0° 30' 04" W of EC 1/16.**

Description of monument and accessories I established to perpetuate the original location of this corner.  
Set **1 1/2"** iron pipe with **2"** brass cap projecting **24"** above ground. Cap stamped:  
Marked NBT's - Tamarack 7" S40°E, 15.60 feet, scribed 1/16 BT.  
Tamarack 5" N50°E, 21.55 feet, scribed 1/16 BT.

S498  
T35N R11E  
NE 1/16 S 21  
CPI-1978

Dated at Rhinelander, Wis., this 5th day of July, 19 78.

Signature Philip T. Hansen Title Registered Land Surveyor Registration No. S-498  
(County Surveyor, Registered Land Surveyor, or other duly authorized official)  
Office of Register of Deeds, County of Oneida  
instrument was filed in this office for record on the 14th day of August 19 78  
at 1245 o'clock P. M.

Doris Venge Fuchs  
(Registered Deeds)

By \_\_\_\_\_ Deputy

351121 3010