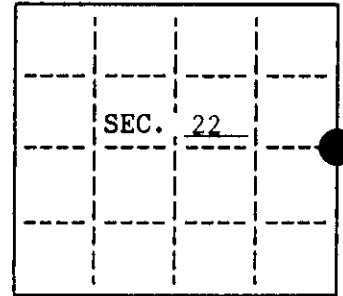


U. S. PUBLIC LAND SURVEY MONUMENT RECORD

Note: This form is intended and designed to fulfill all requirements of Wisconsin Administrative Code, Chapter A-8 7.08 U.S. Public Land Survey Monument Record (3)(a)(b)(c)(d)(e)(f)(g)(h)(i). An additional sheet may be added if necessary to conform with said requirements.

(a) CORNER LOCATION: State Plane Coordinates
E $\frac{1}{4}$ corner of Sec. 22 X _____
 Township 35 North Y _____
 Range 11 East Datum Base _____
 Town/City Schoepke County of Oneida

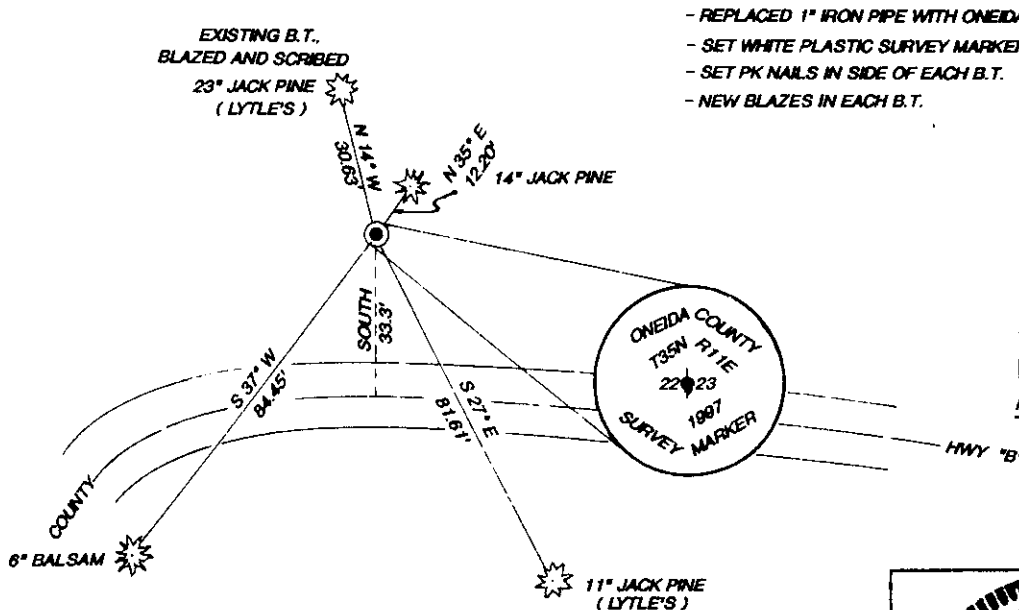


(b) HISTORY OF ORIGINAL CORNER ESTABLISHMENT
 Original Surveyor: William Dougherty Original B.T.'S
 Date of Survey: Commenced July, 1859 Yellow Pine 12" S67°W, 26 lks COR ID
 Black Pine 12" N6° E, 23 lks 4351122000
 Completed July, 1859

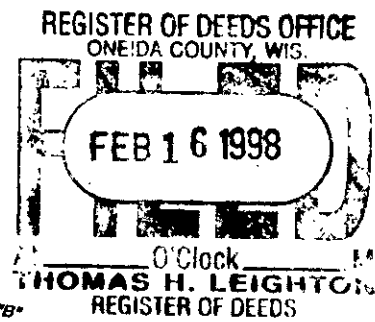
(b)(f)(g)(h) Description of monument found at this corner and if it was accepted, state all evidence (material, testimonial, occupational, plats, records, other monuments) used as a basis for accepting. If not accepted or if nothing was found, state evidence used as basis for establishing location. If reestablished through lost corner proportionate methods, indicate all monuments, distances and directions used to establish. Indicate type of monument and sign post found or set.

- 1859 - Deputy Surveyor, William Dougherty set wood post for E $\frac{1}{4}$.
- 1946 - A.J. Lytle did not find any evidence of original E $\frac{1}{4}$ corner. He set post by proportion between NE and SE section corner and made two B.T.'s: Black Pine 16" N17°W, 46 lks and Black Pine 10" S20°E, 125 lks. (Distance to SE Section corner= 2663.43')
- 1997 - I found a 1" iron pipe for $\frac{1}{4}$ and both Lytle's existing, blazed B.T.'s. I accepted this for the E $\frac{1}{4}$ and replaced it with an Oneida County aluminum monument. (Distance to SE Section corner = 2663.66')

(c)(d)(e) Plan view of corner with ties to at least 4 witness monuments. If in disagreement with previously established corner, show the distances between the two corners and also indicate the ties to the disputed.

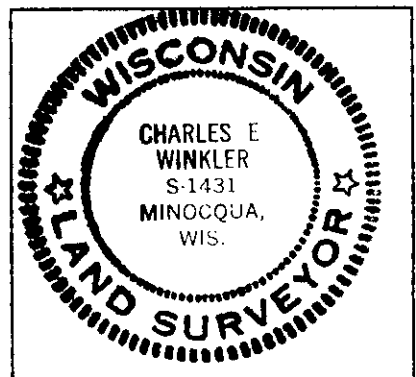


- REPLACED 1" IRON PIPE WITH ONEIDA COUNTY ALUMINUM MONUMENT.
- SET WHITE PLASTIC SURVEY MARKER POST $\frac{1}{2}$ 1' NORTH.
- SET PK NAILS IN SIDE OF EACH B.T.
- NEW BLAZES IN EACH B.T.



(i) I, Charles E. Winkler, #S-1431 hereby certify that the corner location on this record was determined by me or under my direction and control and that this U.S. Public Land Survey Monument Record is correct and complete to the best of my knowledge and belief.

Charles E. Winkler 1/21/98
 Signature Foltz and Associates, Inc. Date



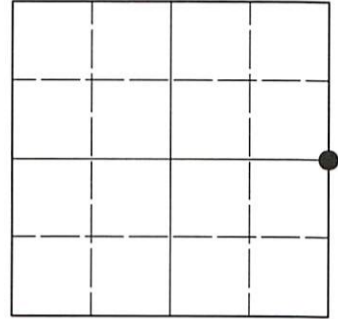
INDEX NO. P 17

U.S. PUBLIC LAND SURVEY MONUMENT RECORD

Note: This form is intended and designed to fulfill all requirements of Wisconsin Administrative Code, Chapter A-E 7.08 U.S. Public Land Survey Monument Record (3)(a-i).

(a) CORNER LOCATION
 1/4 Cor. of Secs. 22 & 23
 Township 35 North
 Range 11 East of the 4th P.M.
 Town of Schoepke
 County of Oneida

WISCRS - Oneida County
 N: 115,880.89 USft
 E: 347,166.71 USft
 Datum: NAD 83(2011) ep. 2010.00
 GNSS Method: RTN - Offset
 GNSS Control: WISCRS VRS



Sec. 22, T. 35 N., R. 11 E.

(b)(f)(g)(h) Description of monument found at this corner and if it was accepted, state all evidence (material, testimonial, occupational, plats, records, other monuments) used as a basis for accepting. If not accepted or if nothing was found, state evidence used as basis for establishing location. If re-established through lost corner proportionate methods, indicate all monuments, distances and directions used to establish. Indicate type of monument and sign post found or set.

This record is a perpetuation of the following land corner document(s):

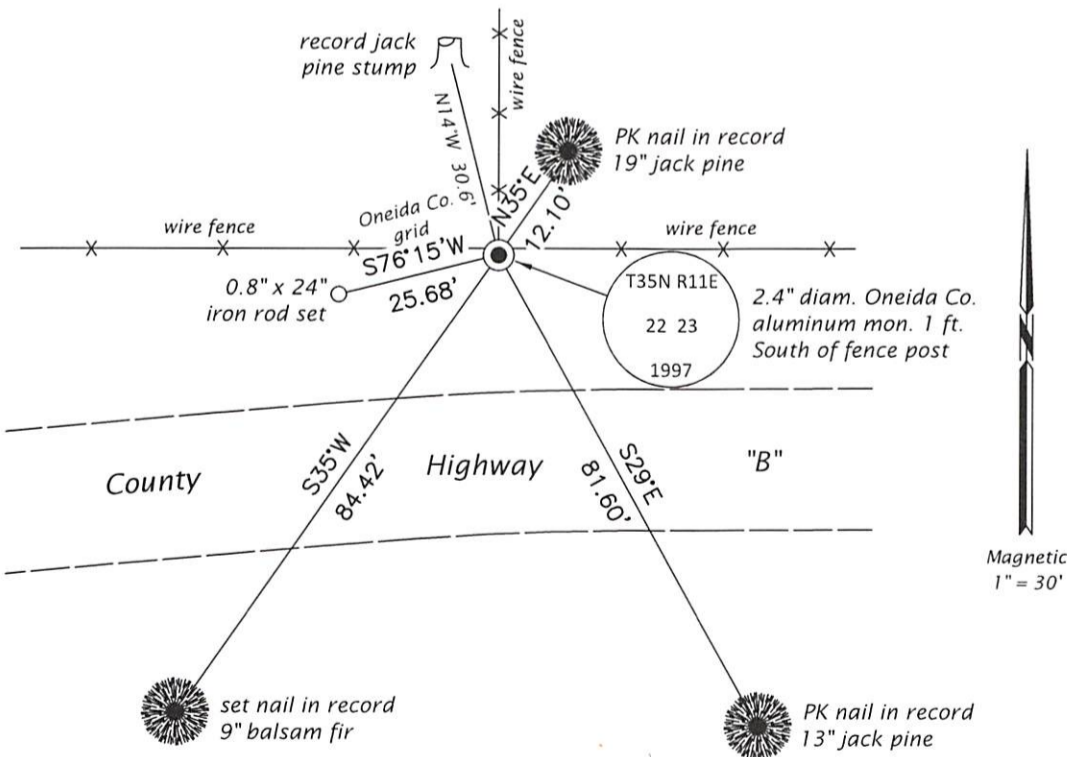
January 21, 1998: USPLS Monument Record by Charles E. Winkler, filed in Oneida County

A complete history of the corner can be found on the previous land corner document(s). I accept the record activity as a true and faithful perpetuation or reestablishment of the original corner location and further perpetuate it as described below.

July 16, 2021: I found and accepted the record monument, a 2.4" diam. aluminum pipe, firmly set, with a 3.3" diam. Oneida Co. aluminum cap buried 4" beneath the ground surface. I found or established accessories as shown below. I found a white vinyl sign post adjacent to the monument.

The coordinate value shown has been verified by at least one of the following methods: 1) comparison to a previously GNSS determined published value; 2) the value is the average of two or more GNSS observations at a markedly different time; 3) one or more distances were measured back to the GNSS observed corner from temporary GNSS observed offset locations.

(c)(d)(e) Plan view of corner with ties to at least 4 witness monuments. If in disagreement with previously established corner, show the distances between the two corners and also indicate the ties to the disputed.



REGISTER OF DEEDS OFFICE
 ONEIDA COUNTY
 FILED

SEP 27 2021

KYLE J. FRANSON
 REGISTER OF DEEDS

(i) I, Jeffrey W. Austin, Professional Land Surveyor No. S-1885, hereby certify that the corner location on this record was determined by me or under my direction and control and that this U.S. Public Land Survey Monument Record is correct and complete to the best of my knowledge and belief.

 SEP 5, 2021
 Signature Date