

U S PUBLIC LAND SURVEY MONUMENT RECORD - ADDENDUM

NOTE: This form is intended and designed to fulfill all requirements of Wisconsin Administrative Code, Chapter A-E 7.08 U.S. Public Land Survey Monument Record (3) (a-i)

A-E 7.08(3)(a) Identity of corner
SOUTHEAST CORNER OF SECTION 23
TOWNSHIP 35 NORTH
RANGE 11 EAST OF THE 4TH PM
TOWN OF SCHOEPKE,
COUNTY OF ONEIDA

WISCORS - ONEIDA COUNTY
N: 112,849.500 USft (112,849.404)
E: 352,460.246 USft (352,460.473)
Datum: NAD83 (2011)
GNSS Method RTN - Direct
GNSS Control WISCORS VRS



The coordinate value shown has been verified by the average of two or more GPS observations at a markedly different time. Values shown in parenthesis, are previously published measurements.

A-E 7.08(3)(b) Description of any record evidence, monument evidence, occupational evidence, testimonial evidence, or any other material evidence.

Original Surveyor: William E Daugherty

Date of Original Survey	Commenced:	July 25, 1859	Original Accessories:			
	Completed:	July 29, 1859	Maple	6	N 78° W	19
			Aspen	9	S 85° E	6

See Previous Monument Record: Index No. R-21 - June 6, 1990 - Surveyor 1098 - William F. Kelly - Thence:

- December 31, 1998 - Surveyor 2148 - Russell F. Brown - indicates this position as "Found R/R spike" on O.C.S. Map B4108.
- May 16, 2003 - Surveyor 2148 - Russell F. Brown - indicates this position as "Found R/R spike" on O.C.S. Map B5266.
- November 18, 2003 - Surveyor 1731 - Kip W. Soder - indicates this position as "P.K. nail in pavement of road" on O.C.S. Map B5546.
- May 2, 2005 - Surveyor 2343 - Kevin P. Bixby - indicates this position as "existing R R spike" on O.C.S. Map B5851.
- March 25, 2015 - Surveyor 1731 - Kip W. Soder - indicates this position as "P.K. nail found in place" on O.C.S. Map A3032.
- June 4, 2018 - Surveyor 2671 - Timothy J. Rusch - indicates this position as "Found PK nail" on CSM Vol. 22 Pg. 4736.
- June 4, 2018 - Surveyor 2671 - Timothy J. Rusch - indicates this position as "Found PK nail" on CSM Vol. 22 Pg. 4742.

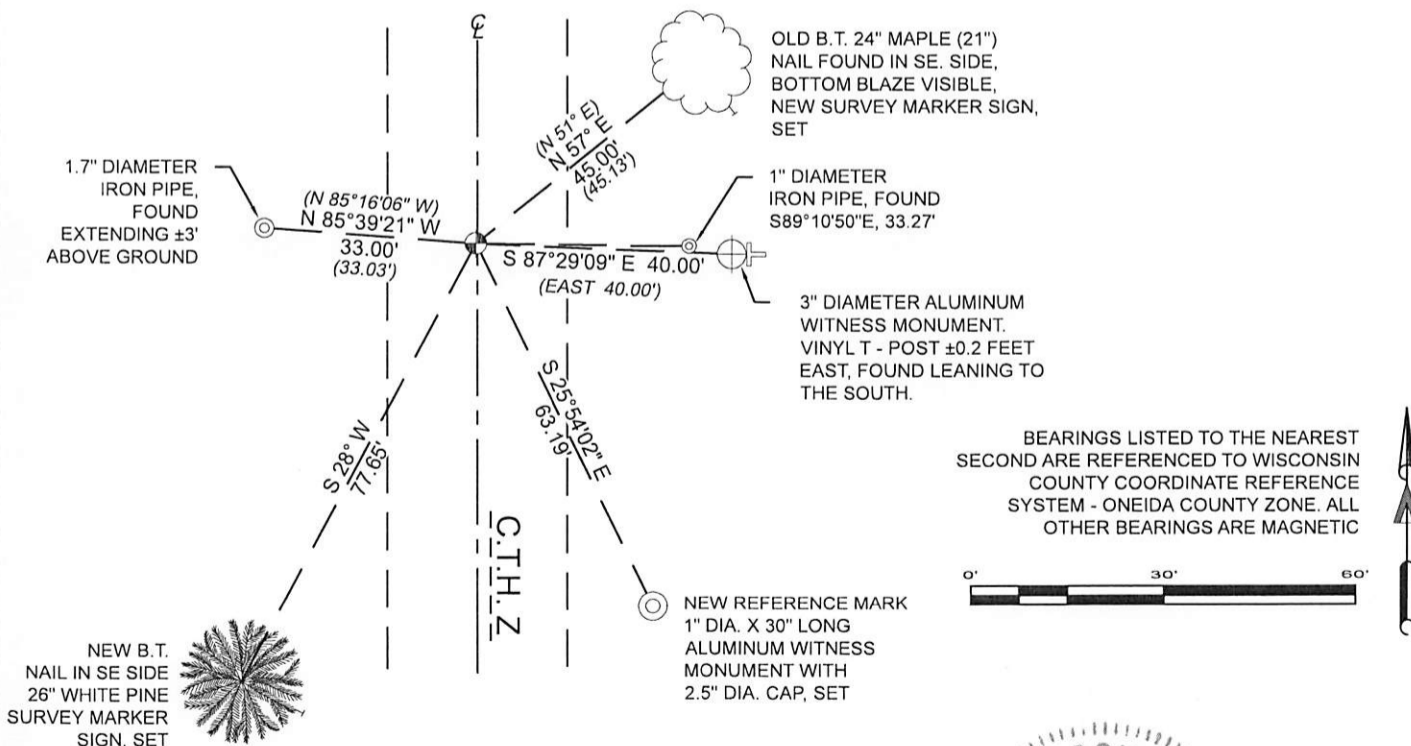
April 28, 2022 - In preparation of a road reconstruction project, I found: One of Kelly's bearing trees, and his aluminum witness monument as shown on previous U.S. Public Land Survey Monument Record R-21.

I did not find Kelly's R.R. spike or the Railroad spike / P.K. nail mentioned by any of the subsequent surveyor's.

A-E 7.08(3)(f) I restored this corner through ACCEPTANCE OF AN OBLITERATED LOCATION.

August 22, 2022 - After completion of the road reconstruction project, I set a 2.5" long steel survey marker spike with a 1" diameter head from existing witnesses, and established 4 new witnesses as shown below.

A-E 7.08(3)(c)(d)(e)(h) Plan view of corner with references to at least 4 witness monuments. If in disagreement with previously established corner, show the distances between the two corners and also indicate the ties to the disputed. The directions and distances to other public land survey corners used as evidence or used for determining the corner location.

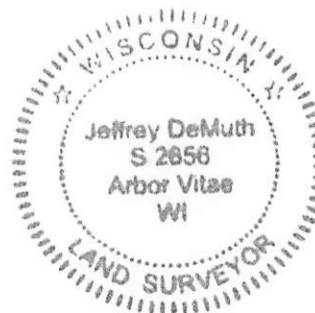


BEARINGS LISTED TO THE NEAREST SECOND ARE REFERENCED TO WISCONSIN COUNTY COORDINATE REFERENCE SYSTEM - ONEIDA COUNTY ZONE. ALL OTHER BEARINGS ARE MAGNETIC

A-E 7.08(3)(i) I, Jeffrey L. DeMuth, Professional Land Surveyor No. S-2656, hereby certify that the corner location on this record was determined by me or under my direction and control and that this U.S. Public Land Survey Monument Record is correct and complete to the best of my knowledge, and belief

January 17, 2023
DATE

SIGNATURE



R-21
43511230000