

State of Wisconsin

County of Oneida } ss.

I, James L. Will, do hereby certify that on the 15th day of October, 1985, I found evidence of the last one-quarter corner of Section 27, Township 35 North, Range 11 East, Fourth Principal Meridian, as described hereon; and that from this evidence I established a new monument and accessories as described hereon to perpetuate the original location of this corner.

Resident witnesses:

Michael E. Weber

U.S. Public Land Survey Monument Record

Index No. P-25

History of original corner establishment:

Original corner was established during the course of the Range Line of T 35 N, R 11 & 12 E, which was established in 1858, by Alfred Alliard, Deputy Surveyor.

Original B.T.'s:

12" Y. Birch N 300 E 26 lks.  
10" Y. Birch S 320 W 27 lks.

Description of corner evidence found:

None.

Description of monument and accessories I established to perpetuate the original location of this corner.

Set 1" iron pipe on Range line 4' east of centerline of Sec. 27. 7M.

Set 3-1" iron pipe references to the corner:  
S 84°-50'-11" E 37.81'  
N 41°-37'-40" W 51.38'  
S 41°-37'-40" E 41.93'

Blazed and scribed the following new bearing trees:

12" Oak S 55°W 63.25' 9" Oak N79°W 64.50' (Measurements are to a nail in

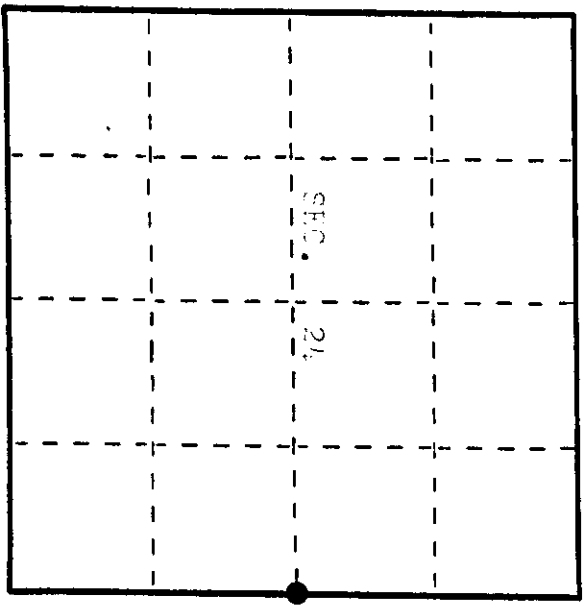
Dated at Maple River Wis., this 23rd day of October, 1985.

Signature: James L. Will Title: Registered Land Surveyor Registration No. S-14110 (County Surveyor, Registered Land Surveyor, or other duly authorized official)

Office of Registrar of Deeds, County of Oneida I hereby certify that the within instrument was filed in this office for record on the 19th day of October, 1985 at 1:00 o'clock A.M.

David V. ... (Registrar of Deeds)

By: ... Deputy



● = Corner monument restored.

3511242000

Describe any material discrepancy between the location of the corner as restored or reestablished and the location of that corner as previously restored or reestablished by distance and direction. Show the discrepancy on the plan view drawing under (d), above. Show the distances between the corner as previously restored or reestablished and (1) the corner as restored or reestablished, and (2) to at least 2 of the witness monuments shown on the drawing in (d), above.

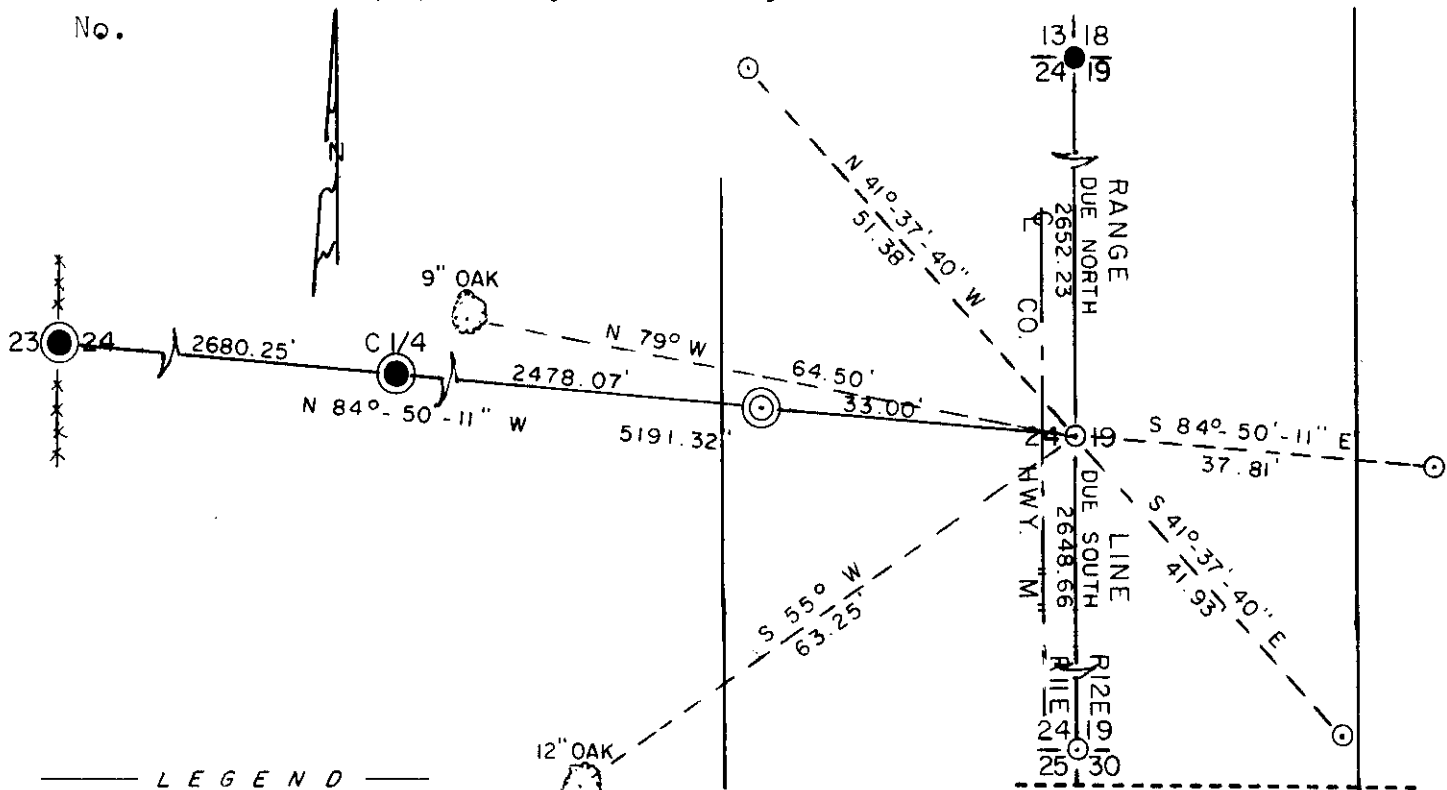
No. See sketch below.

Was the corner restored through acceptance of (1) an obliterated evidence location, or, (2) a found perpetuated location?

Corner was restored by intersection of the Range Line and the East-West 1/4 line using the West and Center 1/4 corners from previous surveys.

Was the corner reestablished through lost corner proportionate methods? If so, show the method, including the directions and distances to other public land survey corners used as evidence or used for proportioning in determining the corner location?

No.



LEGEND

SCALE: 1" = 20'

- MAGNETIC ALUM. CAPPED MON. FOUND IN PLACE
- RAILROAD SPIKE FOUND IN PLACE
- ⊙ MAGNETIC ALUM. CAPPED MON. SET
- 1" IRON PIPE SET
- \*\*\* FENCELINE



I, James L. Will, R.L.S. #1110  
 (type or print name) certify that the corner location shown on this record was determined by me or under my direction and control and that this U.S. Public Land Survey Monument Record is correct and complete to the best of my knowledge and belief.

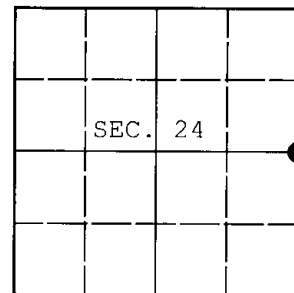
*James L. Will*  
 Signature

October 23, 1985  
 Date

**U.S. PUBLIC LAND SURVEY MONUMENT RECORD**

Note: This form is intended and designed to fulfill all requirements of Wisconsin Administrative Code, Chapter A-E 7.08 U.S. Public Land Survey Monument Record (3) (a) (b) (c) (d) (e) (f) (g) (h) (i). An additional sheet may be added if necessary to conform with said requirements.

(a) CORNER LOCATION: WISCRS - Oneida County  
 1/4 Cor. of Secs. 19 & 24 N: 115,112.85 USft  
 Township 35 North E: 357,687.15 USft  
 Range 11&12 East of the 4th P.M. Datum: NAD 1983(2011)  
 Town of Schoepke County of Oneida



(b) HISTORY OF ORIGINAL CORNER ESTABLISHMENT

Original Surveyor: \_\_\_\_\_ Original Accessories: \_\_\_\_\_  
 Date of Survey: Commenced: \_\_\_\_\_  
 Completed: \_\_\_\_\_

(b) (f) (g) (h) Description of monument found at this corner and if it was accepted, state all evidence (material, testimonial, occupational, plats, records, other monuments) used as a basis for accepting. If not accepted or if nothing was found, state evidence used as basis for establishing location. If re-established through lost corner proportionate methods, indicate all monuments, distances and directions used to establish. Indicate type of monument and sign post found or set.

NOTE: This is a perpetuation of a previous USPLS Monument Record by James L. Will, RLS dated October 23, 1985 and filed in the office of the Oneida County Register of Deeds. A complete history of the corner can be found on the previous monument record. I accept the previous location as a true and faithful perpetuation or reestablishment of the original corner location and further perpetuate it as follows.

May 21, 2016: I found and accepted a perpetuation of the record monument, a 0.75" diam. iron rod in the pavement of County Highway "M". The existing accessories were found in substantial agreement with the record and were not remeasured as the sole purpose of this work is to report the coordinates of the corner point.

The coordinates shown were derived from two independent RTK observations of the corner point and are referenced to the WISCRS GNSS Network.

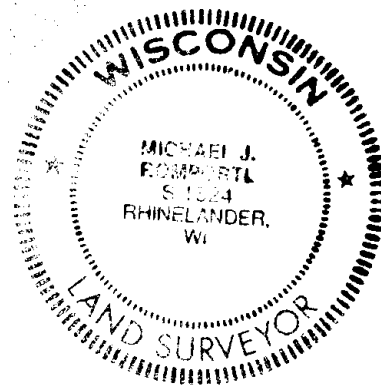
(c) (d) (e) Plan view of corner with ties to at least 4 witness monuments. If in disagreement with previously established corner, show the distances between the two corners and also indicate the ties to the disputed.

REGISTER OF DEEDS OFFICE  
 ONEIDA COUNTY  
**FILED**

DEC 28 2016

AT \_\_\_\_\_ O'CLOCK \_\_\_\_\_ M  
 KYLE J. FRANSON  
 REGISTER OF DEEDS

(i) I, Michael J. Romportl, Professional Land Surveyor No. S-1624, hereby certify that the corner location on this record was determined by me or under my direction and control and that this U.S. Public Land Survey Monument Record is correct and complete to the best of my knowledge and belief.



Michael J. Romportl 12/23/2016  
 Signature Date