

CERTIFIED LAND CORNER RESTORATION

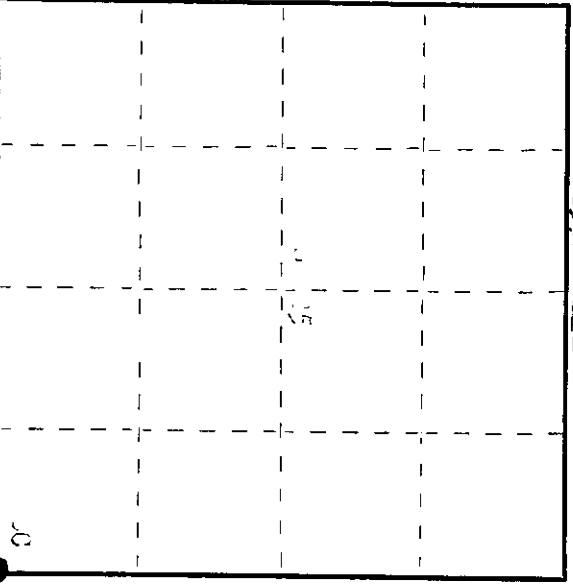
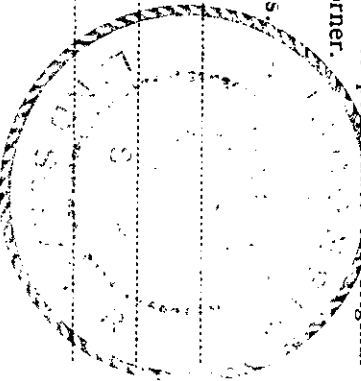
Index No. V-25

State of Wisconsin

County of ... } ss.

I, ... do hereby certify that on the ... day of ... 1976, I found evidence of the ... corner of ... Township ... North, Range ... st., Fourth Principal Meridian, as described hereon; and that from this evidence I established a new monument and accessories as described hereon to perpetuate the original location of this corner.

Resident witnesses: Name of witness: Date: Name of owner:



History of original corner establishment:

Original corner established by ... 19... 49... 49... lines. ... 49... lines. ... 49... lines. ... 49... lines.

Description of corner evidence found:

Accompanied by ... 49... lines. ... 49... lines. ... 49... lines.

Description of monument and accessories I established to perpetuate the original location of this corner.

Replaced Lawrence's ... 49... lines. ... 49... lines. ... 49... lines.

Table with columns for date, name, title, and registration number.

Dated at ... Wis., this ... day of ... 1976. Signature: ... Title: ... Office of Register of Deeds, County of ... at ... o'clock of the ... day of ... 1976.

By: ... Deputy

3511250660

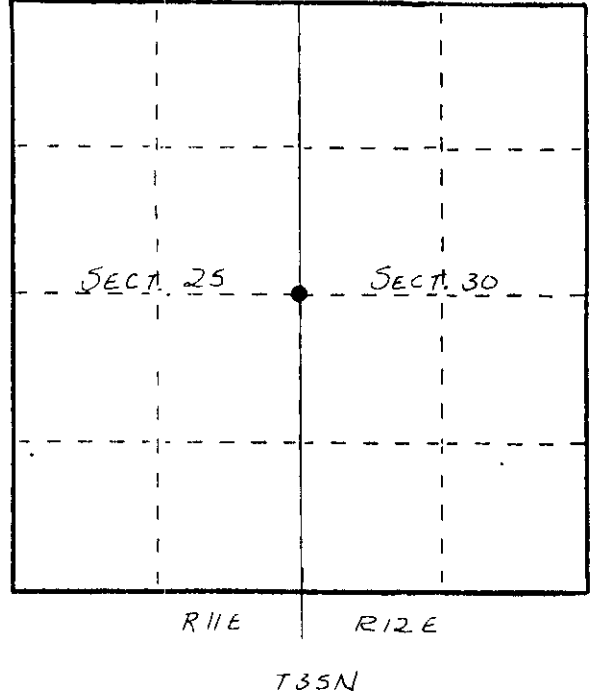
U. S. PUBLIC LAND SURVEY MONUMENT RECORD

INSTRUCTIONS: This record shall show the location of the corner and shall include all of the following nine elements (a through i).

- (a) Identify the corner by reference to the U.S. public land survey system.

○ = Corner monument restored.

ORIGINAL CORNER ESTABLISHED BY ALFRED MILLARD, DEPUTY SURVEYOR, IN 1857:
 12" ELM - NSB°E, 17 lks; 15" ASPEN - NTB°W, 35 lks CORNER
 RE-ESTABLISHED BY H.C. LAWRENCE, R.L.S., 1958. CORNER BELIEVED DESTROYED BY ROAD CONSTRUCTION RAN RANDOM LINE S. FROM NE COR SECT 25. 80.14 CH ALONG CO TRUNK M TO OLD POST AT SECT. COR., 12 lks W. SET 1/4 CORNER ON LINE, EQUIDISTANT. SET 4" CEDAR POST W.L. 30 lks W OF CORNER



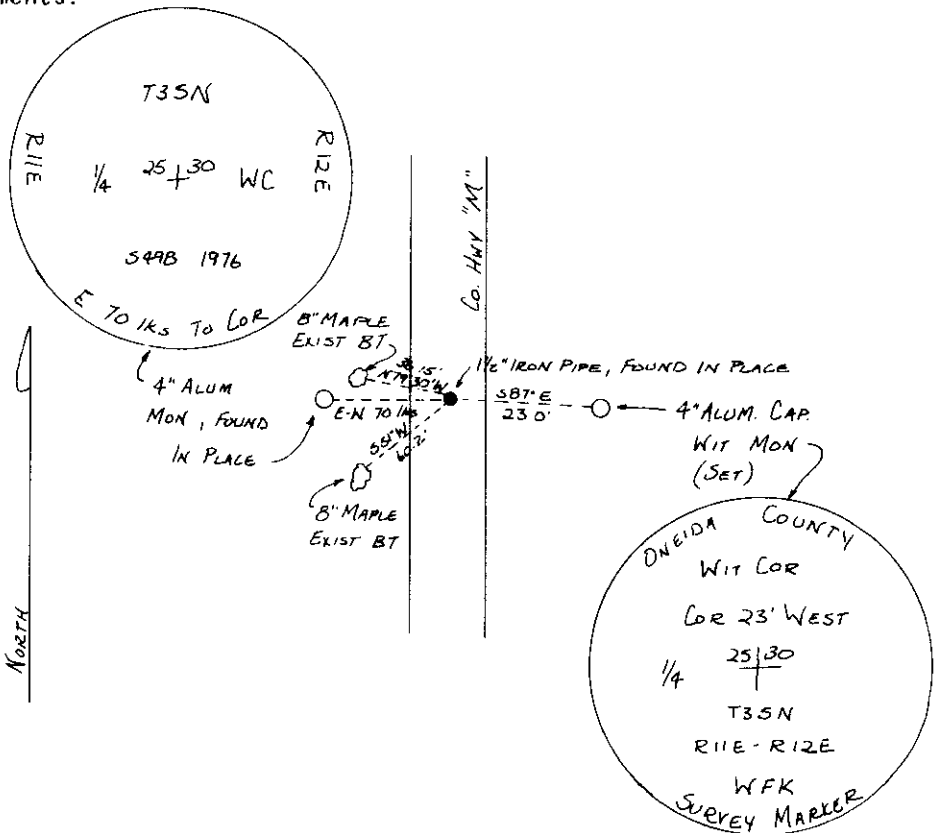
- (b) Describe any record evidence, monument evidence, occupational evidence, testimonial evidence or any other material evidence you considered, and whether the monument was found or placed.

IN NOV., 1976, PHILIP T. HANSEN RECOVERED LAWRENCE'S W.C.; DROVE A 1 1/2" x 15" IRON PIPE IN ROAD 6" BELOW SURFACE FOR TRUE CORNER, 30 lks E OF LAWRENCE'S W.C. SET 2 1/2" BERNTSEN MONUMENT 10 lks W OF TRUE CORNER. 4" CAP STAMPED AS SHOWN BELOW. PAINTED LAWRENCE'S W.C. BLUE. NEW BT'S 8" MAPLE, S56°N, 33.7 lks; 8" MAPLE NTB°W, 93.3 lks; BOTH SCRIBED 1/4 BT.

1983: FOUND IN PLACE - HANSEN'S WIT. MON, 1 1/2" IRON PIPE CORNER MONUMENT, 2 8" MAPLE BT'S. RESET (STRAIGHTENED) HANSEN'S WIT. MON, SET NAIL W/RIBBON IN BASE OF EXISTING BT'S. SET 4" ALUMINUM CAP WITNESS MONUMENT S87°E, 23.0' FROM TRUE CORNER STAMPED AS SHOWN BELOW

- (c) In the plan view drawing below, provide reference ties to at least 4 witness monuments, or, if the location is within a municipality, to at least 2 witness monuments. (Witness monuments shall be made of concrete, natural stone, iron or other equally durable material.) Describe witness monuments.

- (d) Show a plan view drawing depicting the relevant monuments and reference ties which is sufficient in detail to enable accurate relocation of the corner monument if the corner monument is disturbed. Indicate north.



REGISTER OF DEEDS OFFICE
 ONEIDA COUNTY, WIS.
FILED
 JUN 1 1986
 AL 1:41 O'clock P.M.
 LORIS VERAGE KUEHN
 REGISTER OF DEEDS

V-25

(e) Describe any material discrepancy between the location of the corner as restored or reestablished and the location of that corner as previously restored or reestablished by distance and direction. Show the discrepancy on the plan view drawing under (d), above. Show the distances between the corner as previously restored or reestablished and (1) the corner as restored or reestablished, and (2) to at least 2 of the witness monuments shown on the drawing in (d), above.

None

(f) Was the corner restored through acceptance of (1) an obliterated evidence location, or, (2) a found perpetuated location?

(2)

(g&h) Was the corner reestablished through lost corner proportionate methods? If so, show the method, including the directions and distances to other public land survey corners used as evidence or used for proportioning in determining the corner location?

No

(1) I, WILLIAM F. KELLY
(type or print name) certify that the corner location shown on this record was determined by me or under my direction and control and that this U.S. Public Land Survey Monument Record is correct and complete to the best of my knowledge and belief.

William F. Kelly
Signature

2-8-84
Date

