

State of Wisconsin

ss.

County of Oneida

I Phillip W. Hansen, do hereby

certify that on the 13th day

of November, 1976, I found

evidence of the barber

corner of section 25 - 30

Township 25, North, Range

11 - 12, Fourth Principal Meridian,

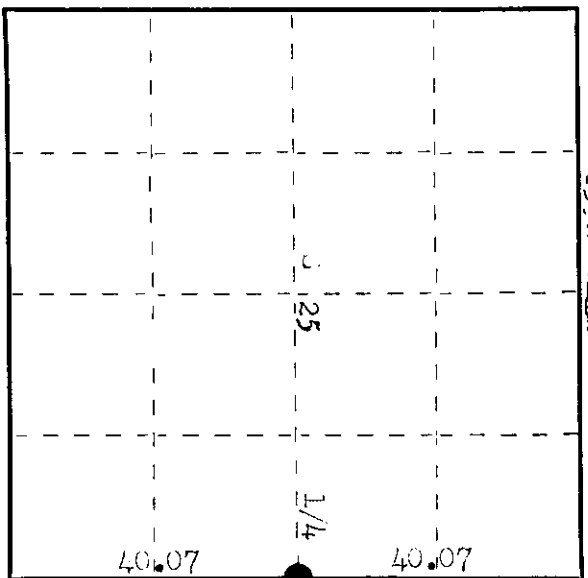
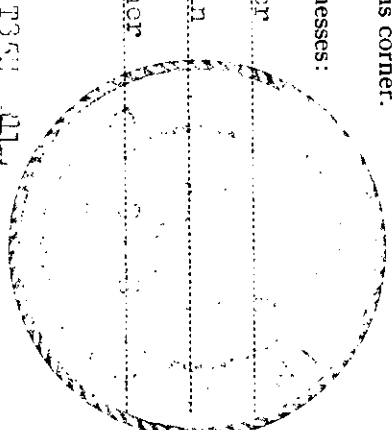
as described hereon; and that from this evidence I established a new monument and accessories as described hereon to perpetuate the original location of this corner.

Resident witnesses:

Allen Sawyer

Jim Dettlin

Herb Sawyer



○ = Corner monument restored.

. CERTIFIED LAND CORNER RESTORATION

Index No. **7-25**

History of original corner establishment: Original corner established by Alfred Hillman, Senior, surveyor, in 1856, by which section corners were set 200 links, or 17 links, as on 15th section of T25N R11E. Corner established to have been destroyed by road construction. A new random line south from section corner 19, 30, 24, set a distance of 86.14 chains along county trunk line to old post at section corner 14 links west.

Set 1/4 corner on line at 40.07 chains, equidistant. Set 4" cedar post ... 30 links west of corner.

Description of corner evidence found:

recovered Lawrence's witness corner, square and scribed 1/4 link ... 30 links west of corner in road.
 No evidence or records of original monument.

Description of monument and accessories I established to perpetuate the original location of this corner.

drove a 1 1/4" iron pipe in road 6" below surface for true corner, 30 links east of Lawrence's ...
 set a 2" section nail Federal monument 70 links west of true corner.
 monument projects 10" above ground. cap as noted:
 Left hemisphere ... in place, in 1976.
 Right - diameter 56" ... 35.7 links, scribed 1/4 link.
 diameter 70" ... 93.3 links, scribed 1/4 link.
 measurements to 70 links are from true corner.
 1354
 11 22 30 12
 70 links to corner.
 495 1976

Dated at Wausau, Wis., this 23rd day of November, 1976

Signature Phillip W. Hansen Title Registered Land Surveyor or other duly authorized official) Registration No. 498

Office of Register of Deeds, County of Oneida 725 I hereby certify that the within instrument was filed in this office for record on the 11th day of December, 1976 at 11:02 o'clock A. M.

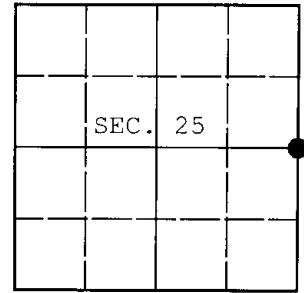
Dora Sawyer Tucker
(Register of Deeds)

By Joseph M. Berner Deputy

U.S. PUBLIC LAND SURVEY MONUMENT RECORD

Note: This form is intended and designed to fulfill all requirements of Wisconsin Administrative Code, Chapter A-E 7.08 U.S. Public Land Survey Monument Record (3) (a) (b) (c) (d) (e) (f) (g) (h) (i). An additional sheet may be added if necessary to conform with said requirements.

(a) CORNER LOCATION: WISCRS - Oneida County
 1/4 Cor. of Secs. 25 & 30 N: 109,815.85 USft
 Township 35 North E: 357,731.76 USft
 Range 11&12 East of the 4th P.M. Datum: NAD 1983(2011)
 Town of Schoepke County of Oneida



(b) HISTORY OF ORIGINAL CORNER ESTABLISHMENT

Original Surveyor: Alfred Millard Original Accessories:
 Date of Survey: Commenced: May, 1858 elm 12" N58°E, 17 lks.
 Completed: June, 1858 aspen 15" N78°W, 35 lks.

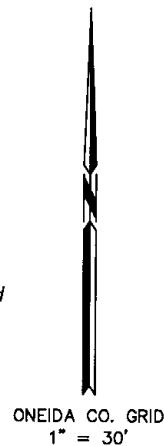
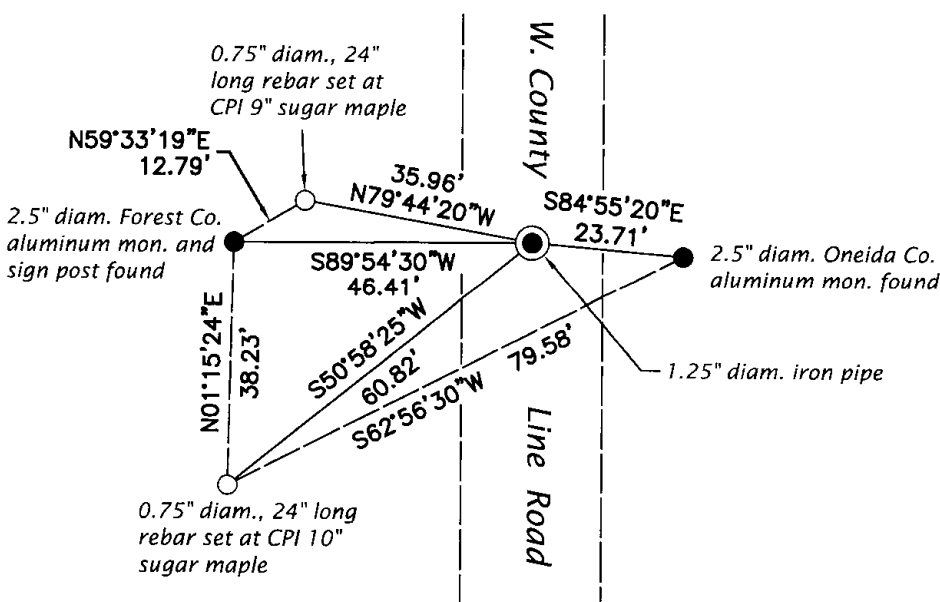
(b) (f) (g) (h) Description of monument found at this corner and if it was accepted, state all evidence (material, testimonial, occupational, plats, records, other monuments) used as a basis for accepting. If not accepted or if nothing was found, state evidence used as basis for establishing location. If re-established through lost corner proportionate methods, indicate all monuments, distances and directions used to establish. Indicate type of monument and sign post found or set.

NOTE: This is a perpetuation of a previous USPLS Monument Record by Philip T. Hansen, RLS dated November 23, 1976 and filed in the office of the Oneida County Register of Deeds. A complete history of the corner can be found on the previous monument record. I accept the previous location as a true and faithful perpetuation or reestablishment of the original corner location and further perpetuate it as follows.

May 21, 2016: I found and accepted the record monument, a 1.25" diam. iron pipe 8" beneath the gravel road centerline. I found or established accessories as shown below.

The coordinates shown were derived from two independent RTK observations of the corner point and are referenced to the WISCORS GNSS Network.

(c) (d) (e) Plan view of corner with ties to at least 4 witness monuments. If in disagreement with previously established corner, show the distances between the two corners and also indicate the ties to the disputed.

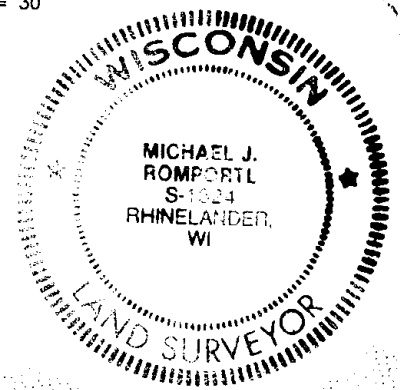


REGISTER OF DEEDS OFFICE
 ONEIDA COUNTY
 FILED

DEC 28 2016

AT _____ O'CLOCK _____ M
 KYLE J. FRANSON
 REGISTER OF DEEDS

(i) I, Michael J. Romportl, Professional Land Surveyor No. S-1624, hereby certify that the corner location on this record was determined by me or under my direction and control and that this U.S. Public Land Survey Monument Record is correct and complete to the best of my knowledge and belief.



Michael J. Romportl 12/28/2016
 Signature Date