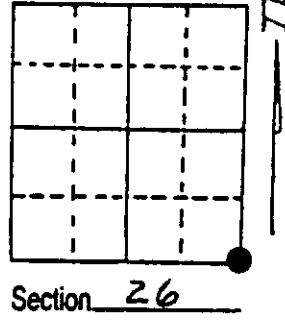
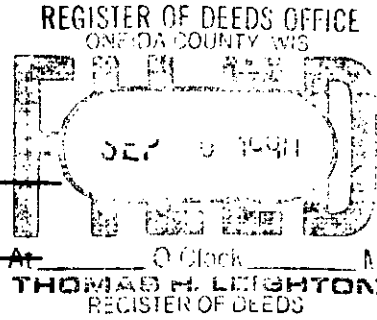


# U.S. PUBLIC LAND SURVEY MONUMENT RECORD

Note: This form is intended and designed to fulfill all requirements of Wisconsin Administrative Code, Chapter A-E 7.08 U.S. Public Land Survey Monument Record (3) (a) (b) (c) (d) (e) (f) (g) (h) (i). An additional sheet may be added if necessary to conform with said requirements.

(a) Corner location: Township 35 North  
 Range 11 East/West  
 Town/City/Village SCHOEPKE  
 County ONEIDA



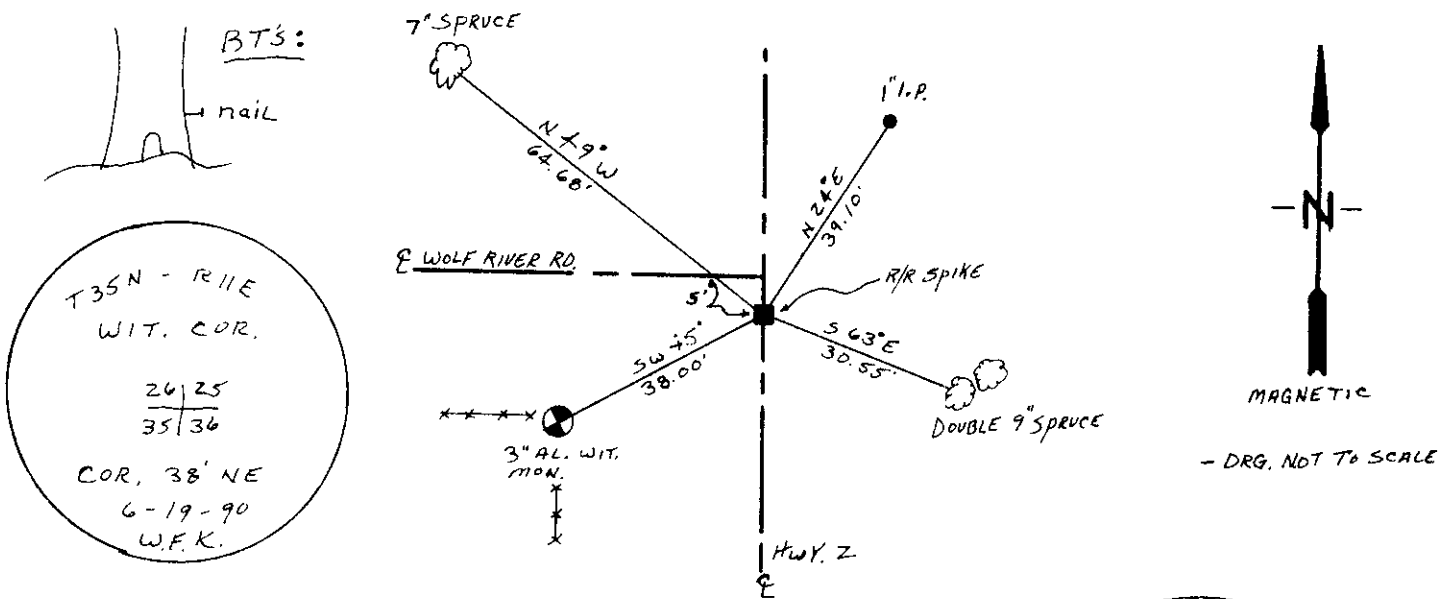
(b) (f) (g) (h) Description of monument found at this corner and if it was accepted, state all evidence (material, testimonial, occupational, plats, records, other monuments) used as a basis for accepting. If not accepted or if nothing was found, state evidence used as basis for establishing location. If reestablished through lost corner proportionate methods, indicate all monuments, distances and directions used to establish. Indicate type of monument found or set and sign post.

1859, W. DAUGHERTY ESTABLISHED ORIGINAL CORNER

1914, VAUGHAN SET IRON MONUMENT & B.T. (10" W. pine, S 41° E, 86 1/2 Ks.)

JUNE 1990, W.F. KELLY FOUND IRON BENEATH SURFACE OF ROAD.  
 SET R/R SPIKE OVER IRON & SET 3" AL. WITNESS MONUMENT SOUTH WEST

(c) (d) (e) Plan view of corner with ties to at least 4 witness monuments. If in disagreement with previously established corner, show the distances between the two corners and also indicate the ties to the disputed corner.



(i) I, WILLIAM F KELLY  
 (type or print name) certify that the corner location on this record was determined by me or under my direction and control and that this U.S. Public Land Survey Monument Record is correct and complete to the best of my knowledge and belief.

William F. Kelly                      8-28-90  
 Signature                                      Date



Stamp  
 3511260000

Index No. V-21

FEB 08 2023

KYLE J. FRANSON  
REGISTER OF DEEDS

# U S PUBLIC LAND SURVEY MONUMENT RECORD - ADDENDUM

NOTE: This form is intended and designed to fulfill all requirements of Wisconsin Administrative Code, Chapter A-E 7.08 U.S. Public Land Survey Monument Record (3) (a-i)

A-E 7.08(3)(a) Identity of corner  
SOUTHEAST CORNER OF SECTION 26  
TOWNSHIP 35 NORTH  
RANGE 11 EAST OF THE 4TH PM  
TOWN OF SCHOEPKE,  
COUNTY OF ONEIDA

WISCORS - ONEIDA COUNTY  
N: 107,610.512 USft (107,610.956)  
E: 352,386.715 USft (352,386.494)  
Datum: NAD83 (2011)  
GNSS Method RTN - Direct  
GNSS Control WISCORS VRS



The coordinate value shown has been verified by the average of two or more GPS observations at a markedly different time. Values shown in parenthesis, are previously published measurements.

A-E 7.08(3)(b) Description of any record evidence, monument evidence, occupational evidence, testimonial evidence, or any other material evidence.

Original Surveyor: William E Daugherty

Date of Original Survey	Commenced:	July 25, 1859	Original Accessories:			
	Completed:	July 29, 1859	Aspen	12	S 43° W	100
			Aspen	9	N 50° E	110

See Previous Monument Record: Index No. V-21 - June 19, 1990 - Surveyor 1098 - William F. Kelly - Thence:

January 7, 1997 - Surveyor 887 - Thomas R. Arnott - indicates this position as "Fd. RR spike" on O.C.S. Map C1316.

July 11, 2008 - Surveyor 1731 - Kip W. Soder - indicates this position as "P.K. nail found in place" on O.C.S. Map B7059.

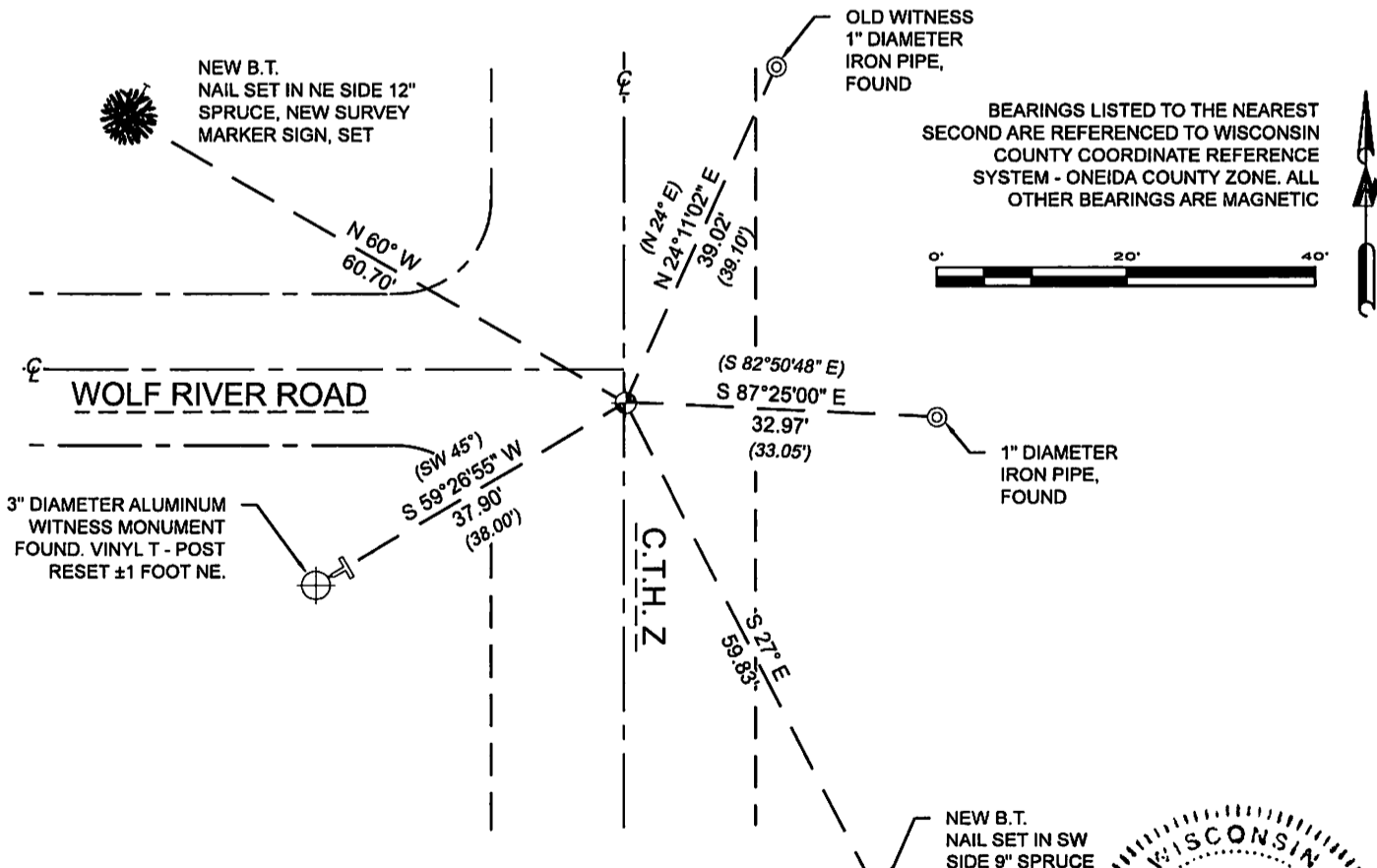
April 29, 2022 - In preparation of a road reconstruction project, I found: Kelly's aluminum witness monument and the 1" diameter iron pipe monument as shown on previous U.S. Public Land Survey Monument Record V-21, and a 1" diameter iron pipe from CSM No. 1288, volume 5 page 1288.

I did not find Kelly's R.R. spike, his bearing trees, or Soder's P.K. nail.

A-E 7.08(3)(f) I restored this corner through ACCEPTANCE OF AN OBLITERATED LOCATION.

August 22, 2022 - After completion of the road reconstruction project, I set a 2.5" long steel survey marker spike with a 1" diameter head from existing witnesses, and established 2 new witnesses as shown below.

A-E 7.08(3)(c)(d)(e)(h) Plan view of corner with references to at least 4 witness monuments. If in disagreement with previously established corner, show the distances between the two corners and also indicate the ties to the disputed. The directions and distances to other public land survey corners used as evidence or used for determining the corner location.

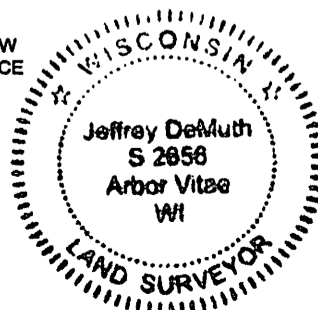


A-E 7.08(3)(i) I, Jeffrey L. DeMuth, Professional Land Surveyor No. S-2656, hereby certify that the corner location on this record was determined by me or under my direction and control and that this U.S. Public Land Survey Monument Record is correct and complete to the best of my knowledge, and belief

January 17, 2023

SIGNATURE

DATE



43511260000

V-21