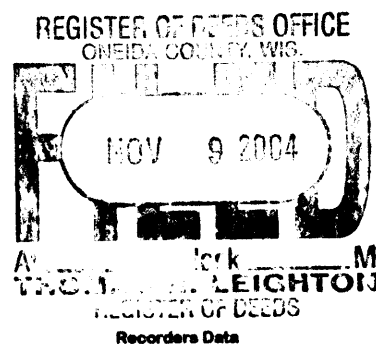


This form is intended to fulfill the requirements of Chapter A-E7.08 (3)(a) thru (i) U.S. Public Land Survey Monument Location Record, Wisconsin Administrative Code. Use the reverse side of form for continuation.

U.S. PUBLIC LAND SURVEY MONUMENT LOCATION RECORD



USPLS CORNER: WEST 1/4 SECTION: 25 TOWNSHIP: 35 NORTH RANGE: 11 EAST
 NAME OF WATERWAY FOR M.C. CORNER : N/A SECTION LINE: N/A
~~(OFF)~~(VILLAGE)(TOWN) OF: SCHOEPKE COUNTY OF: ONEIDA

Description of monument found or placed and all other evidence used as the basis for monument location; including monuments and measurements required if the corner location was reestablished by lost corner proportionate methods. Also indicate name of the original surveyor, original survey date and the corner monument, bearing trees, witness or other reference monuments established, including measured bearing and distance ties, from available survey records.

Found an older 1/4" dia. by 1" long PK nail at centerline of existing North/South blacktop road mat, which I pulled and reset with a 1/2" dia. by 4.5" long stainless steel pin with geared top flush with blacktop surface, as no other corner monument evidence detected within a 5' radius with metal detector. This corner position was previously located by GPS control survey per Oneida County survey records. See reverse side for comparative record distances along section line. I also found an old wood fence corner post with CWP&P Company aluminum location tag at top and fences to East & South about 27' East of corner.

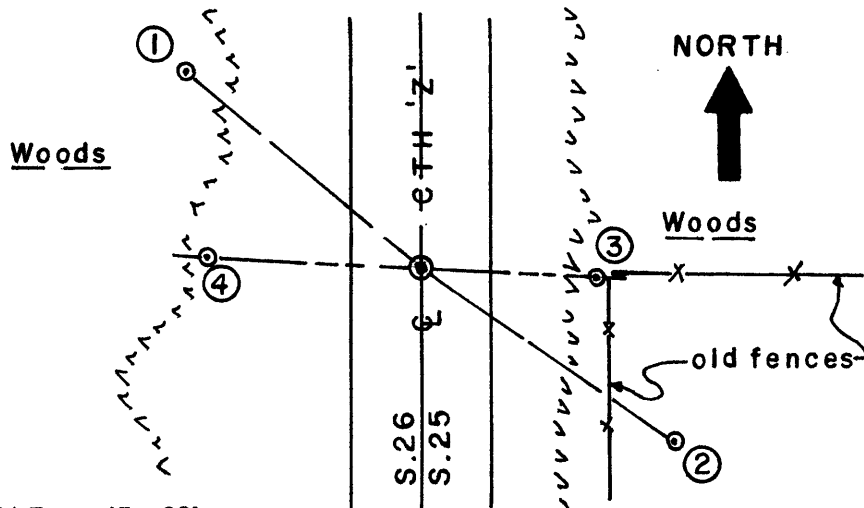
In July 1859, William E. Daugherty/GLO set a wood post as original corner and noted OBTs: a 10" Pw S60°E 25 links and a 7" Bw S67°W 10 links; all now obliterated within roadway corridor.

In November 1914, D.H. Vaughan set a 1" dia. by 36" long iron pin in roadway as 1/4 corner from stump of an original OBT and noted a 10" Bw BT S44°W 111 links and the 1/4 pin at 38.56 chains South of his iron pin at the NW corner of Section 25 per his field notes in Oneida County survey records; Vaughans Bw BT nor iron pin verified this date.

In August 1958, H.C. Lawrence notes fences East & West at this corner 40.76 chains North of the SW corner of Section 25, 40.66 chains by Vaughan, per Consolidated Papers, Inc. notes in Oneida County survey records.

This recovery completed July 15, 2004; there were no direct witnesses other than vehicular drive-bys.

Plan view map of monument location with bearing and distance ties to a minimum of four(4) described witness or reference monuments of concrete, natural stone, iron, live bearing trees or equivalent material. If applicable, also show a minimum of two(2) bearing and distance ties to any other monument found and not accepted; including the bearing and distance from the accepted monument.



WITNESS MONUMENT TIES:

- ① New 6" Fir BT N50°W 47.66'.
- ② Older 8" Fir BT, with galvanized 60d spike in right face root crown, S55°E 47.48' to PK/W in right face.
- ③ Set a standard yellow poly RM cap in top of an older 1" dia. iron pipe found 8" up at S87°E 26.85'.
- ④ Set a 5/8" dia. by 24" long rebar with yellow poly RM cap 2" up at N87°W 33.40'.

Standard white poly 'T' marker post set 6" West of Witness Monument No. 4.

SCALE: 1" = 30'

Unless otherwise indicated, all bearing tree ties are to a .25" dia. by 2.5" long PK nail with a 1.25" dia. steel washer driven into unblazed right face and a .25" dia. by 2.5" long PK nail with a 2" dia. steel washer stamped BT is also driven into unblazed face of bearing tree at DBH; the basis for measured bearings is by compass to nearest degree and all tie distances are measured horizontal by steel tape corrected to nearest 1/100th feet at standard temperature of 68° F.

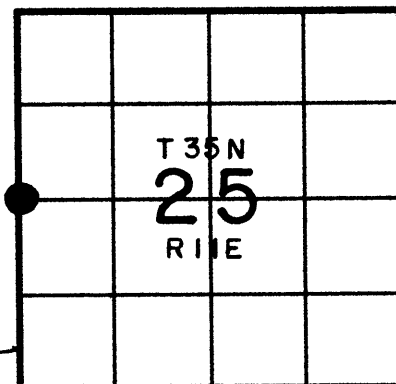
RLS SEAL:



LAND SURVEYOR CERTIFICATE:

I, William C. Rohde, hereby certify that I am duly licensed as a Professional Land Surveyor in the State of Wisconsin; that this USPLS monument location was determined by me and/or under my direct supervision and control; and that this U.S. Public Land Survey Monument Location Record is true and correct to the best of my knowledge and belief.

Signed: *William C. Rohde*
 William C. Rohde RLS 841



SECTION LOCATION MAP
 INDEX NO. 121

NORTH
↑
1" = 600'

