

CERTIFIED LAND CORNER RESTORATION

Index No. **S-18**

State of Wisconsin

County of **Oneida** } ss.

I **Phillip T. Hansen**, do hereby certify that on the **19th** day of **January**, 19**77**, I found evidence of the **NW 1/16** corner of **Section 26**

Township **35N**, North, Range **11 East**, Fourth Principal Meridian,

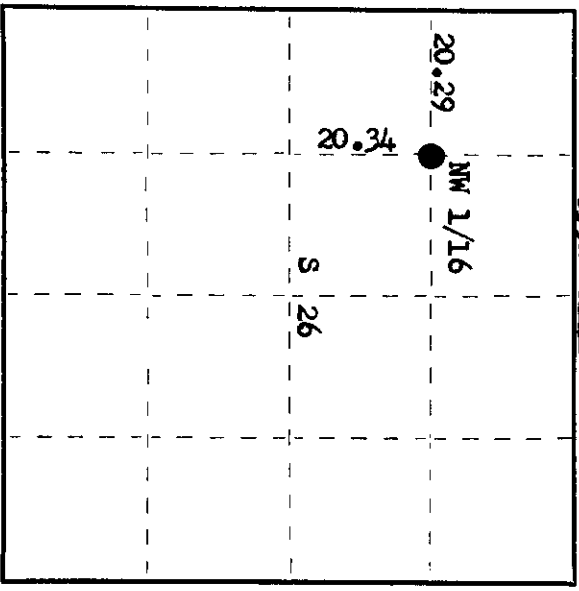
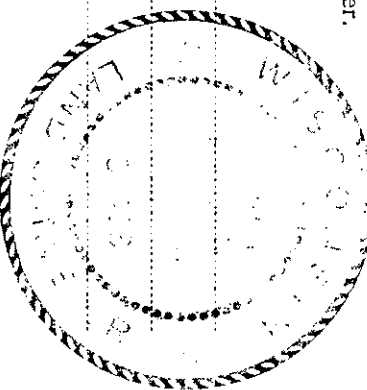
as described hereon; and that from this evidence I established a new monument and accessories as described hereon to perpetuate the original location of this corner.

Resident witnesses:

Glen Barker

Jim Clarlin

Herb Wagoner



History of original corner establishment:

Corner established by D.H. Vaughan, County Surveyor, in 1914.

Corner re-established by H.C. Lawrence, Registered Land Surveyor, in 1959, in fence corner at 20.34 chains N 1° W of recovered WC 1/16 corner. Set 3" oak post and marked NBTs - Oak 4" S 63° E 43 links and Oak 8" S 15° W 66 links.

Description of corner evidence found:

Recovered Lawrence's 3" oak post, squared and scribed NW 1/16 S26 laying down under snow and leaves. Recovered old point. Recovered OBTs - Red Oak 4" (6") S 63° E 43 links, scribing grown over. Red Oak 8" (10") S 15° W 66 links, scribing grown over.

Description of monument and accessories I established to perpetuate the original location of this corner.

Replaced point of oak post with 1 1/2" OD iron pipe with 2" brass cap, stamped: Monument projects 24" above ground. NBT - Maple 6" N 26° E 21.5 links, scribed 1/16 BT.

S498
T35N R11E
NW 1/16 S 26
CPI-1977

Dated at **Rhinelander**, Wis., this **24th** day of **January**, 19**77**.

Signature *Phillip T. Hansen* Title **Registered Land Surveyor** Registration No. **S-498**
(County Surveyor, Registered Land Surveyor, or other duly authorized official)

Office of Register of Deeds, County of **Oneida**. I hereby certify that the within instrument was filed in this office for record on the **24th** day of **February**, 19**77** at **1:00** o'clock **P.** M.

Dorcas Verage Kuehn
(Register of Deeds)

By: _____ Deputy

3511263030